

## **Understanding Packaging Accessibility**

YOXALL, Alaster <<http://orcid.org/0000-0002-0954-2725>>

Available from Sheffield Hallam University Research Archive (SHURA) at:

<https://shura.shu.ac.uk/6870/>

---

This document is the

**Citation:**

YOXALL, Alaster (2012). Understanding Packaging Accessibility. In: Europack 2012, Cannes, France, 17th-18th September 2012. [Conference or Workshop Item]


---

**Copyright and re-use policy**

See <http://shura.shu.ac.uk/information.html>

## Understanding Packaging Usability



A close-up portrait of a middle-aged woman with shoulder-length brown hair. She has a surprised or concerned expression on her face, with wide eyes and slightly open lips. She is wearing a black top with a red patterned collar and a red spiral-shaped earring. The background is a plain, light-colored wall with a white door visible on the right side.

**The World is going through  
unprecedented  
demographic change**

# the guardian weekly

Global views on world events | [guardianweekly.co.uk](http://guardianweekly.co.uk) | 24-30 July 2009

## Global greying will test rich and poor nations

1.3 billion pensioners  
expected by 2040

Structure of the family  
will be transformed



### World diary

Iraqis look for a payoff  
from foreign oil  
companies » [page 9](#)

### Culture

Armour, the original  
power suit  
» [page 34](#)





Ageing results in loss of strength,  
dexterity and cognition



**YOURS**  
MAGAZINE

# Packaging Survey

# Pack it in!

*Just say no to  
impossible packaging*







## What's the worst thing to open?

### You said:

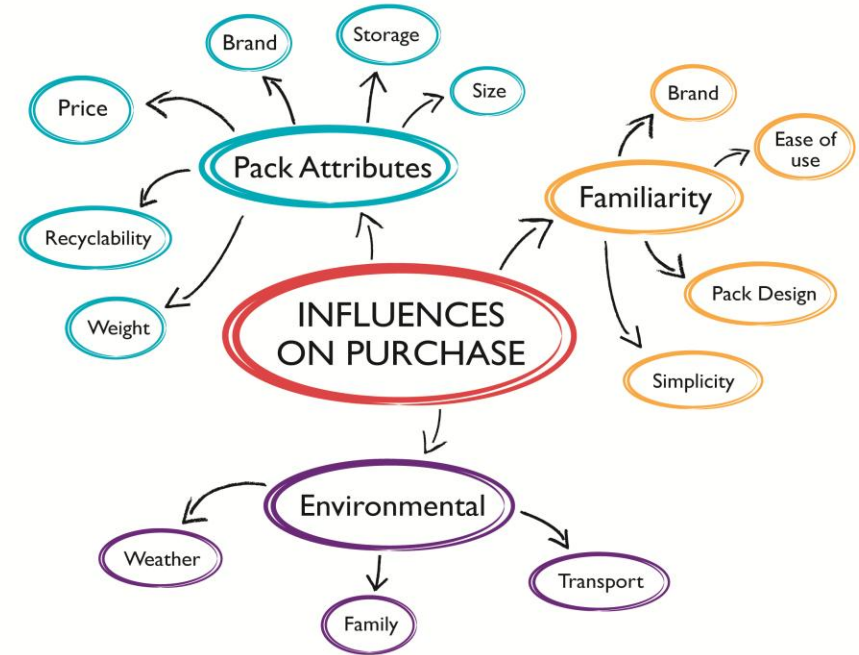
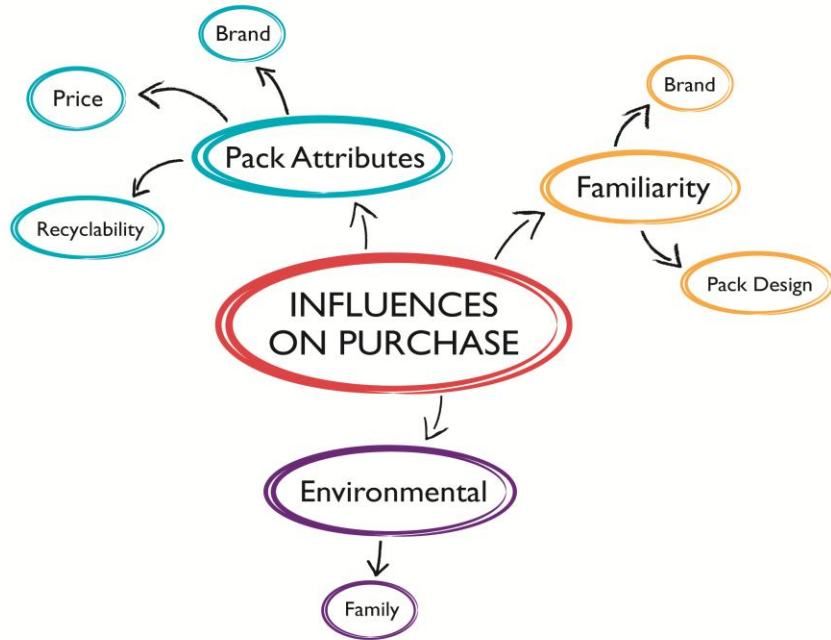
- 1 Tops of bleach bottles
- 2 Jars
- 3 Shrink-wrapped cheese and ham and sealed sandwich packets
- 4 Ring-pull cans
- 5 Tins of meat/fish

- 6 Milk cartons and juice cartons (including milk and cream pots for coffee)
- 7 Child-proof tops on medicines
- 8 The Cellophane on microwave ready-meals
- 9 Soap powder boxes
- 10 Biscuits





## Young Old < 70



## Older Old > 70

---

## ORIGINAL RESEARCH

# Is there adequate feeding assistance for the hospitalised elderly who are unable to feed themselves?

Mei F. TSANG

*Food Service Department, Royal North Shore Hospital, Sydney, New South Wales, Australia*

### Abstract

**Objective:** To observe patients at meal times in order to determine the type and amount of feeding assistance required by hospitalised elderly patients and the adequacy of assistance nursing staff provide to patients.

**Methods:** The study was an observational study. Patients admitted to the ward were observed over a one-week period encompassing all meals (breakfast, lunch, dinner and snacks) served on a 14-day menu cycle.

**Subjects:** A total of 46 hospitalised elderly patients with mean age  $86.5 \pm 4.8$  years admitted to the ward.

**Setting:** The study was undertaken in a general teaching hospital geriatric ward in Sydney.

**Results:** A high percentage of patients required some assistance with feeding at meals (70%,  $n = 32$ ). The partially dependent patients had their needs basically fulfilled by ward staff. However, of the nine totally dependent patients, three were observed lacking any assistance (33%). The amount of assistance time from nursing staff was found shorter than that from non-nursing staff, 123 and 137 minutes, respectively. Nursing assistants were the main providers of assisted eating in the ward. However, little attention and time were given to that task by registered nurses.

**Discussion:** Provision of assisted eating by nursing staff presents many problems. More than 40% of hospital food was wasted and patients' recommended intakes for preserving health were not met. Hospital feeding policies and staff arrangements therefore need reviewing.

**Conclusions:** Although assisting patients who are unable to feed themselves is a time-consuming process, it is a vital and necessary part of nursing care.

**Key words:** aged, food intake, hospitalised, nutrition, nutritional status, malnutrition.

---

## INTRODUCTION

Nutritional deficits in hospitalised

One possible reason for malnutrition in hospitalised elderly patients






Physical and Emotional



Strength





**Women are half as strong  
as men and their strength  
declines rapidly after the  
age of 70**







Dexterity





17A



1. Make sure both sides are fully opened back
2. Pull pack open from diagonally opposite corners open both sides

## SOUPS OF THE WORLD

We all love to share foodie experiences and inspirations from our travels around the world. Ours have influenced this deliciously exotic recipe range, capturing the essence of many different, exciting cuisines. Evocative spices, vibrant colours and intense flavours turn the unfamiliar into the unforgettable.

From 60 years onwards  
dexterity decreases by  
approximately 1.6% a year







## Cognition











Emotional









What can we do?



## Interview





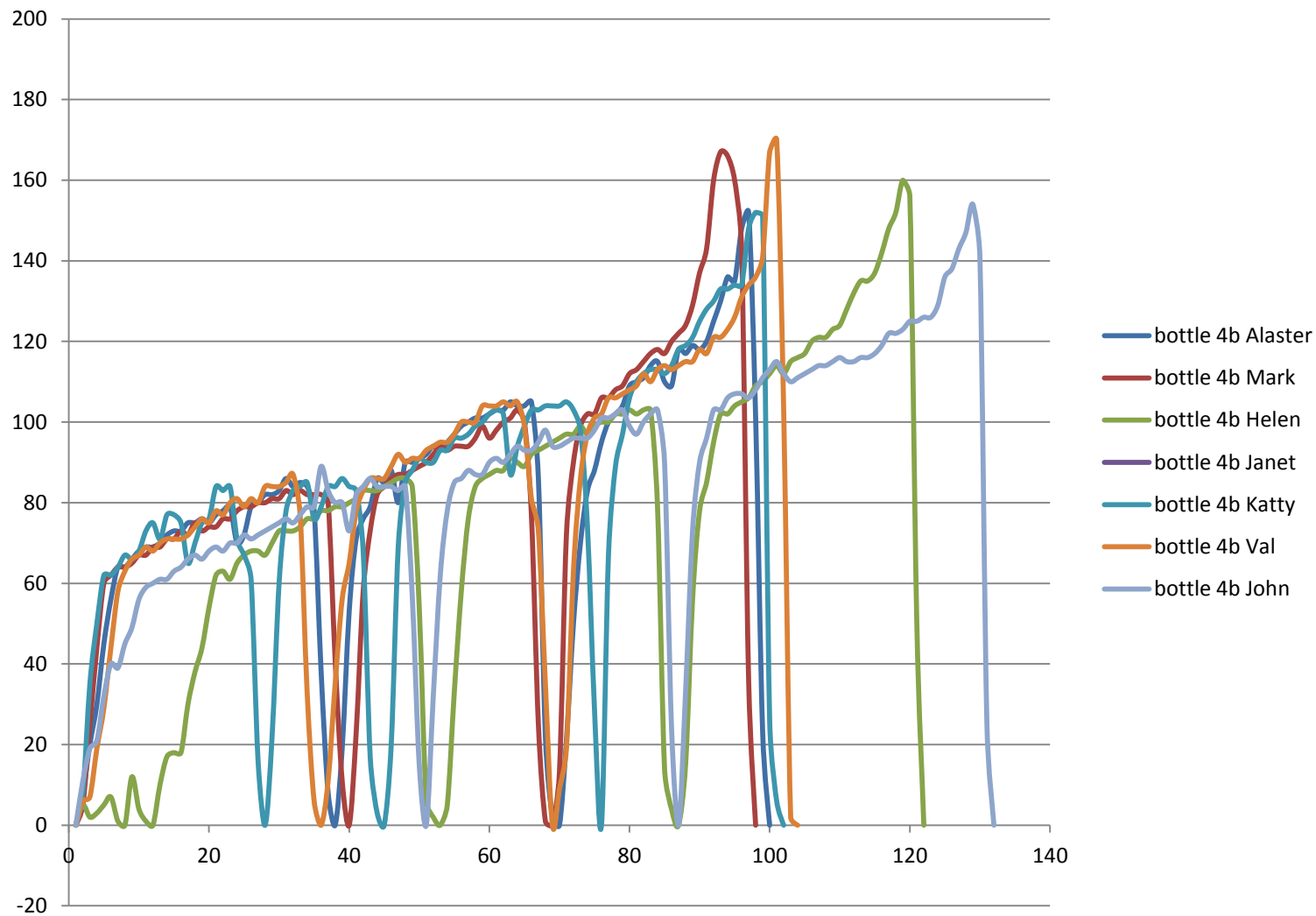




## Measure





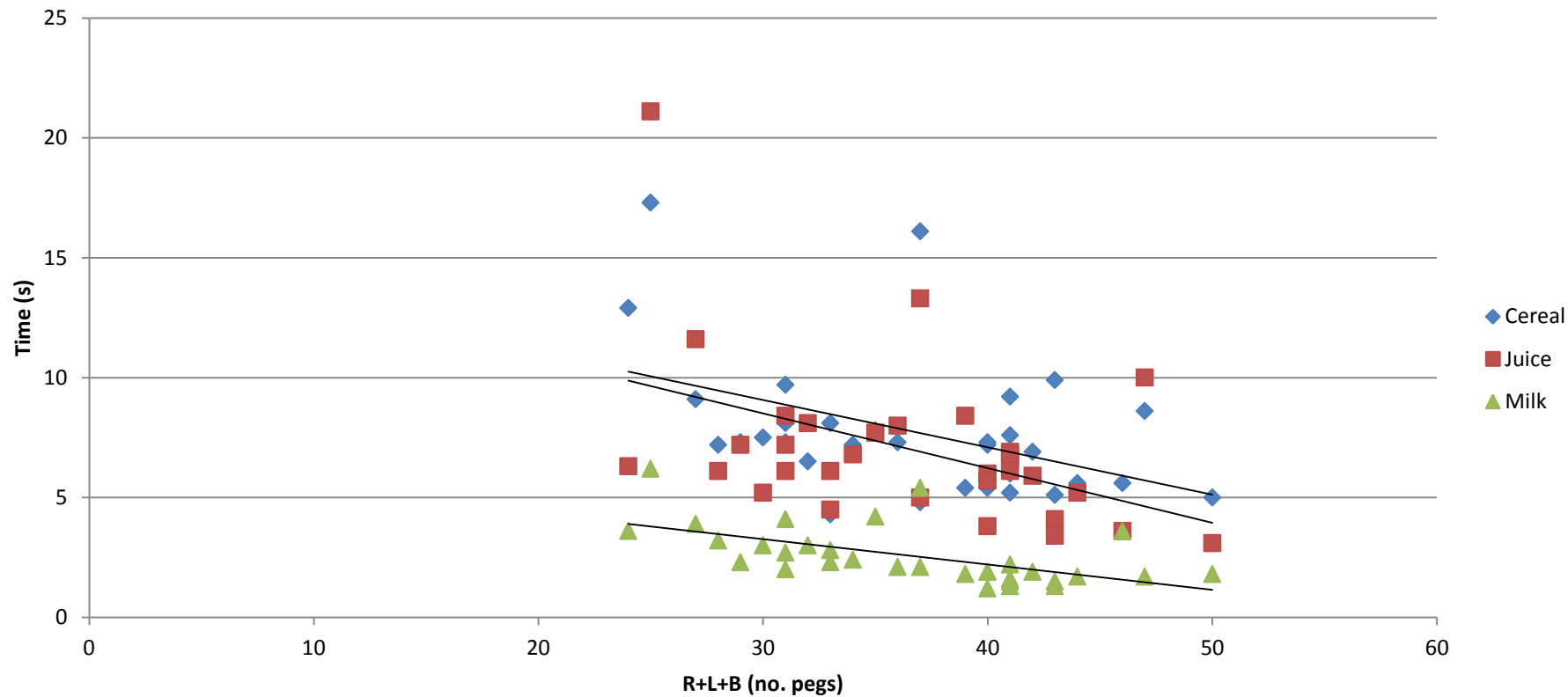








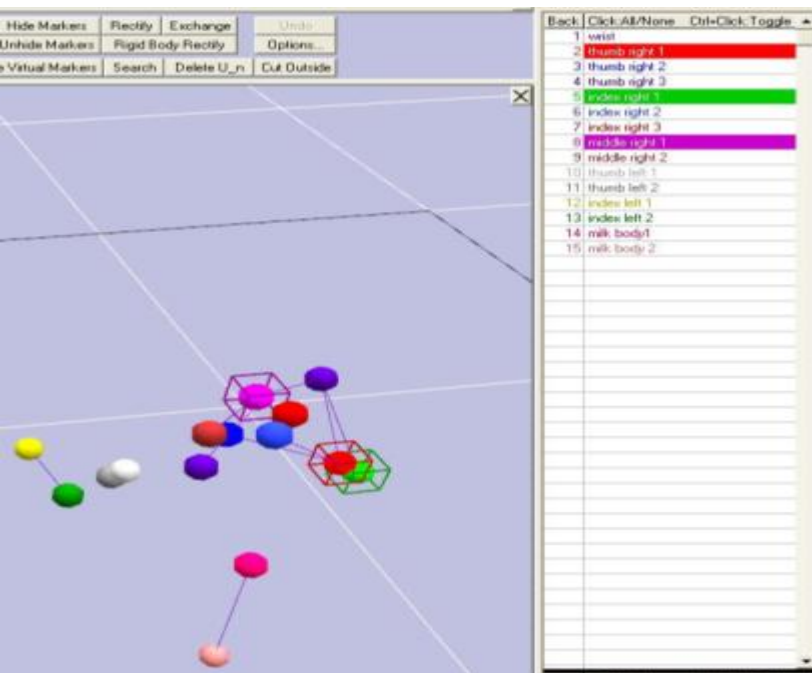
# All participants - Macro Dexterity vs Cereal, Juice and Milk Opening Times









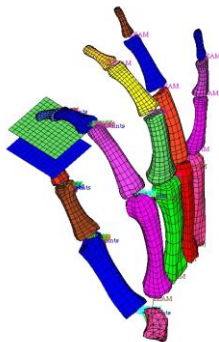


With thanks to J Clement

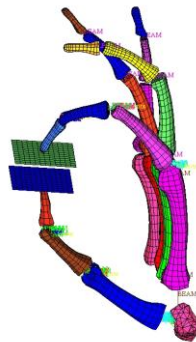


# Analytics

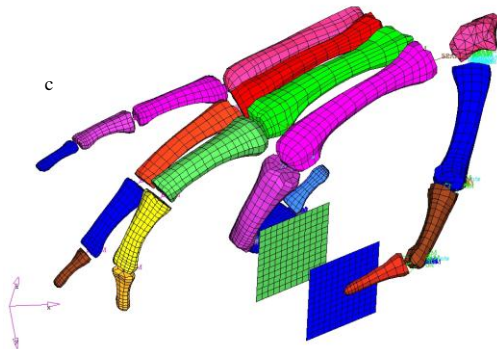
a



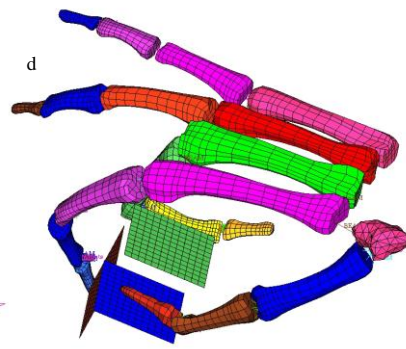
b



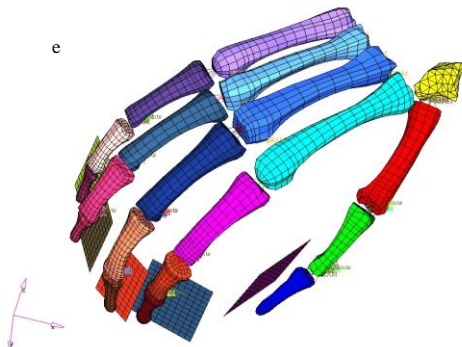
c



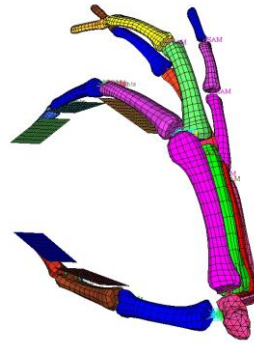
d



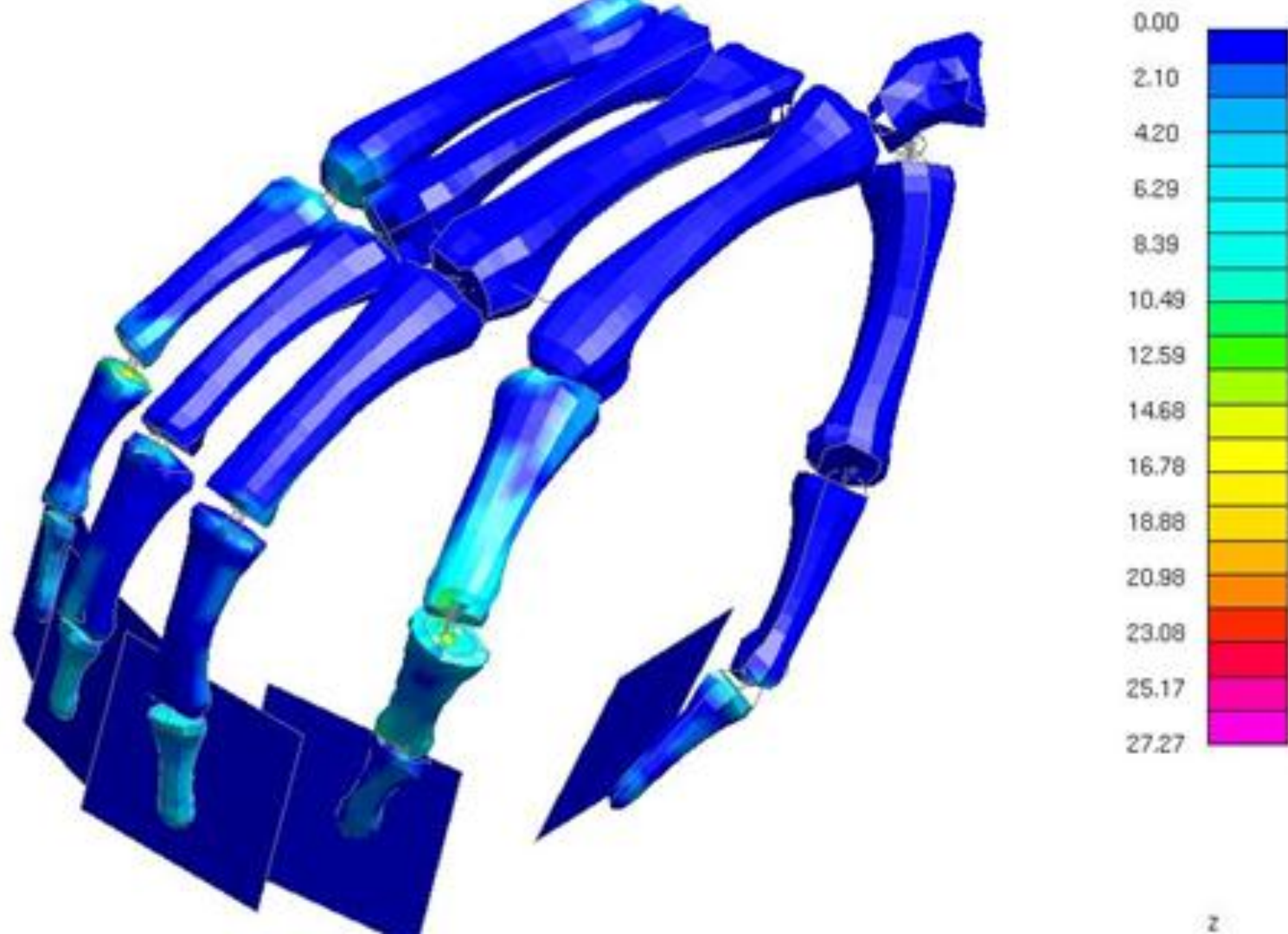
e



f







What is happening?







New easy-open  
paper  
wrap

***weetabix***®  
TM











Dr Alaster Yoxall  
[a.yoxall@shu.ac.uk](mailto:a.yoxall@shu.ac.uk)  
[www.designfuturesgroup.com](http://www.designfuturesgroup.com)