

Older adults in primary care: Living with multimorbidity

BERRIDGE, Paula and LEWIS, Robin

Available from Sheffield Hallam University Research Archive (SHURA) at:

<https://shura.shu.ac.uk/35613/>

This document is the Presentation

Citation:

BERRIDGE, Paula and LEWIS, Robin (2025). Older adults in primary care: Living with multimorbidity. In: ICCHRN conference, South Bank University London. ICCHRN. (Unpublished) [Conference or Workshop Item]

Copyright and re-use policy

See <http://shura.shu.ac.uk/information.html>

Older adults in primary care: Living with multimorbidity

Paula Berridge
Nurse Consultant, PhD Student,
The Rotherham NHS Foundation Trust

Dr Robin Lewis
Sheffield Hallam University

Research question

To explore the perceptions of health care professionals regarding the management of multiple health conditions for patients over the age of 65 in the UK in primary care and the community setting.

Twenty Health care professionals were interviewed, using Constructive grounded theory based on Kathy Charmaz (2024) methodological approach. Semi-structured interviews were conducted across Primary and Community Care

The aim of this poster is to showcase the key themes identified from the data analysis.

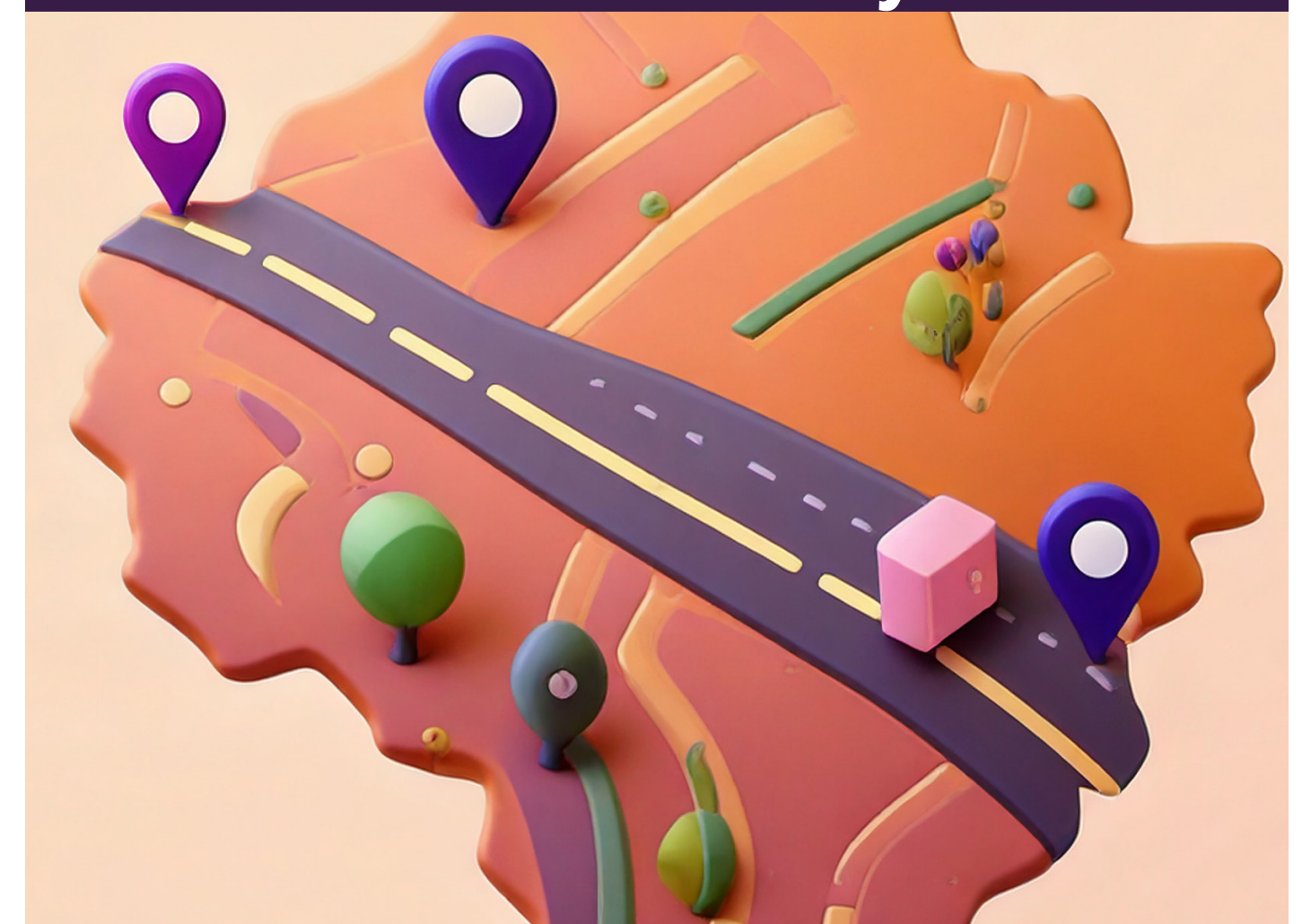
Specialist vs Generalist



Lack of education



Geographical differences: No consistency



Links between Primary Care



Organisation of care



Importance of social prescribing



Multimorbidity can be characterised by reduction in mortality within the ageing population, the prevalence increase in older adults has been linked to medical advances, patient survival from once fatal medical conditions and an increase in the age of the population (Salive, 2012 and Formiga et al, 2013).

The Case Management Society of America (2022) defines case-management as "a collaborative process of assessment, planning, facilitation, care-coordination, evaluation and advocacy for options and services to meet an individual and family's comprehensive health needs through communication and available resources to promote quality, cost-effective, outcomes".

References and contacts



Email pb5932@hallam.shu.ac.uk
paula.berridge@nhs.net

Mobile 0795 8530 658