

DigiCP- Addressing Health Inequalities through the Digitalization of Perinatal Mental Health Care Pathways.

ROAST, Chris <<http://orcid.org/0000-0002-6931-6252>>, DAVILA GARCIA, Maria Luisa, SOLTANI, Hora <<http://orcid.org/0000-0001-9611-6777>> and DANICKOVA, Eva

Available from Sheffield Hallam University Research Archive (SHURA) at:
<https://shura.shu.ac.uk/34956/>

This document is the Accepted Version [AM]

Citation:

ROAST, Chris, DAVILA GARCIA, Maria Luisa, SOLTANI, Hora and DANICKOVA, Eva (2023). DigiCP- Addressing Health Inequalities through the Digitalization of Perinatal Mental Health Care Pathways. In: Healthcare Analytics and Artificial Intelligence 2023, Department of Computing, Sheffield Hallam University, UK, 13 June 2023. Hallam University. (Unpublished) [Conference or Workshop Item]

Copyright and re-use policy

See <http://shura.shu.ac.uk/information.html>

Dr Chris Roast (*c.r.roast@shu.ac.uk*), Computing, BTE ; Dr Maria L Davila Garcia (*m.l.davila-garcia@shu.ac.uk*) Computing, BTE ; Professor Hora Soltani, Midwifery, College of Health, Wellbeing and Life Sciences; Dr Eva Danickova (Nursing). Research Students: Safa Basharat, MSc AI. Soraya Charef Hicho, BEng SW Engineering.

Introduction

Our technology will facilitate the work to all service providers and mothers, looking for Mental health support, helping them navigate the details of the care offered, and locate the appropriate services in a timely manner.

Our solution will be made accessible to under served groups by localizing it for service users from ethnic communities. We are focus upon Arabic speaking mothers in South Yorkshire and service providers in the same area.

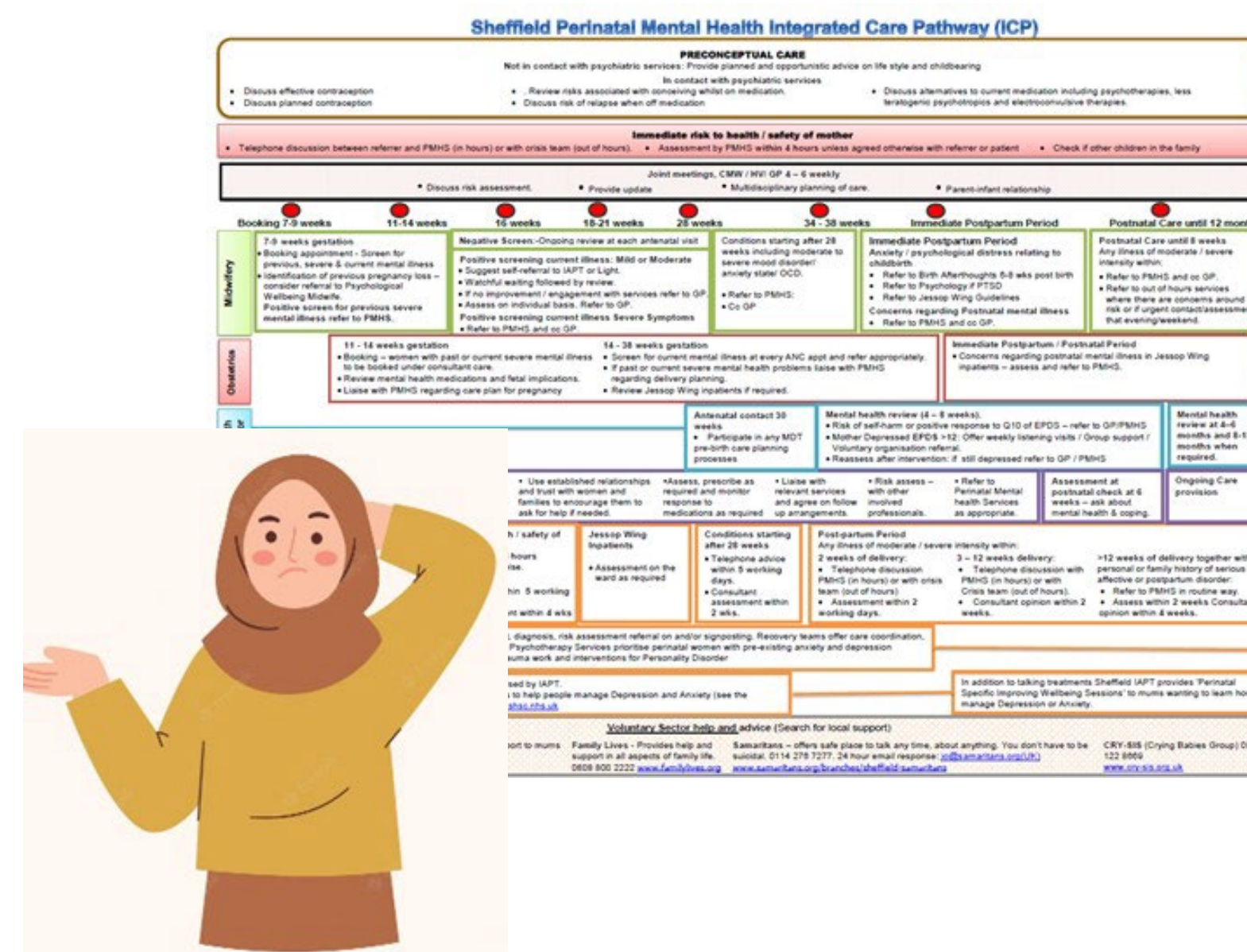
Aims

Develop a digital online tool for a PMH integrated care pathway, in an interactive way.

Propose a methodology to transform a traditional PMH pathway into a digital format.

Reduce the lack of engagement with mental health services and reduce the stigma about having mental health difficulties during pregnancy and after birth.

Problem and solution



Card Template

ID/unique name:	Service provider (and type):
Historically related IDs	
Pre-requisites	
Professional roles involved:	
Primary professional role:	
Times in service perinatal period this service will be provided:	
The cards that might follow-on from this, and post condition for each:	
Narrative description:	
Narrative description for a service user:	

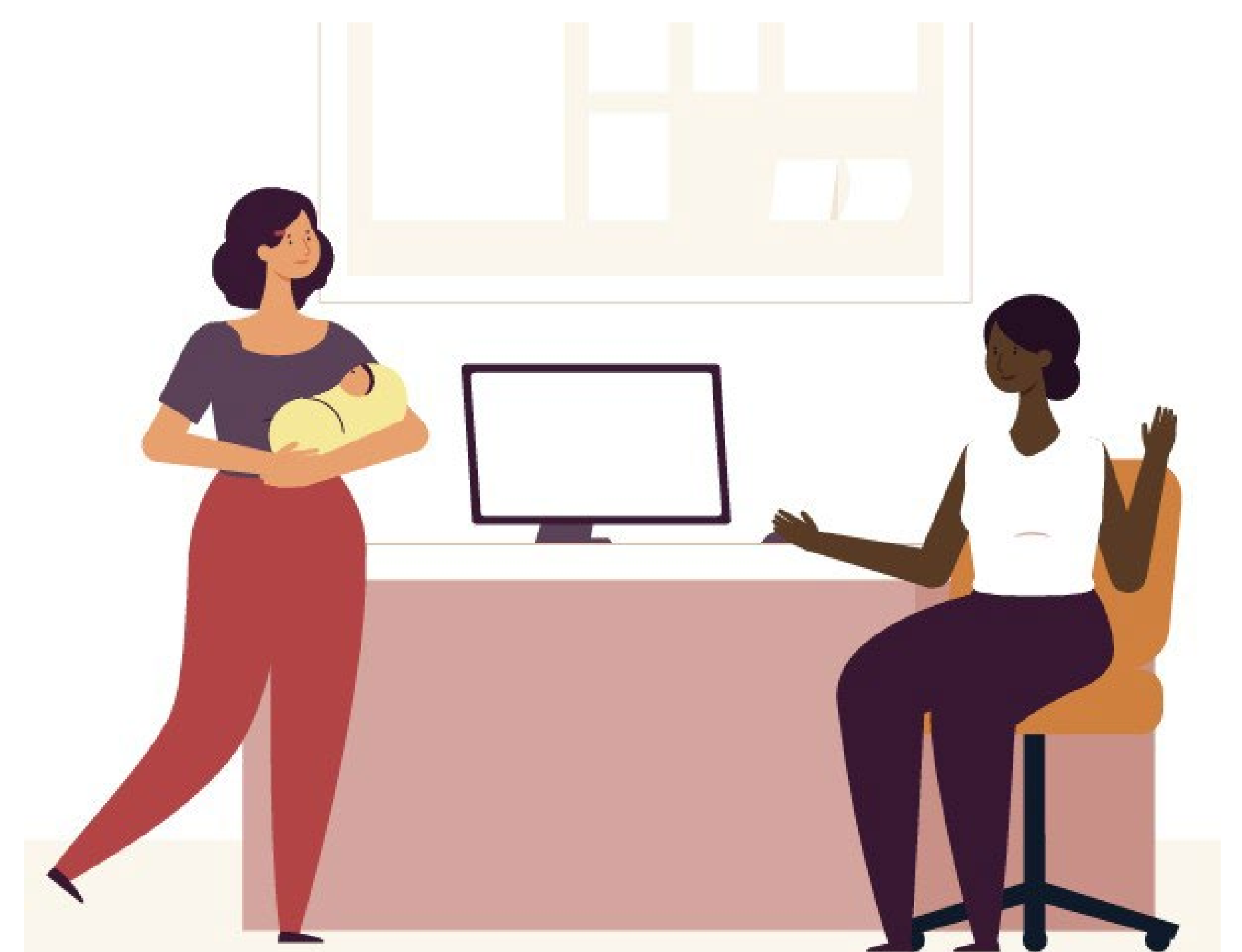


Navigating and understanding perinatal mental health (PMH) services is a challenge, particularly for mothers from ethnic minority groups making less effective their access to PMH services. The resulting health inequalities had a high adverse societal impact from PMH as one of the UK's leading causes of maternal death (1)(2)(3).

We propose a methodology for analysis and identification of prerequisites and interaction between actors in the Pathway, with the use of a **Cards**. **Cards** are a transitional representation between the traditional Pathway and their digital format. Using *cards* provide a consistent format for articulating pathways.

Conclusions and Future Work

- Through community engagement, we reached out to Arabic speaking mothers and explored their experiences of seeking help for PMH and their views about a simple online tool for PMH guide.
- This prototype is work in progress as a first stage to develop an initial tool for providers and mothers to help in navigating the care offered, and locate the appropriate services in a timely manner. Further development of this simple online tool, depends on future funding opportunities.
- We believe that this methodology could also be applied to any care pathway for any community, including health provision in other territories.



Acknowledgments

- Dr Jon Painter, and Katie Sayles (Nursing and Midwifery) for their help and input.
- Helen Miles, Josanne Ratcliffe (Light), Light peer supporters and ORAMMA Friendly Mothers.
- Amy Jenkins (Sheffield Health and Social Care, NHS) and Julia Thompson (Sheffield City Council)
- Sean Clarkson (Yorkshire and Humber Partners Academic Health Science Network)

"This work was commissioned and funded by SBRI Healthcare. SBRI Healthcare is an Accelerated Access Collaborative (AAC) initiative, in partnership with the Academic Health Science Networks (AHSNs). The views expressed in the publication are those of the author(s) and not necessarily those of SBRI Healthcare or its stakeholders."

References

- (1) Jankovic, J., et al. Differences in access and utilisation of mental health services in the perinatal period for women from ethnic minorities—a population-based study. *BMC Med* 18, 245 (2020).
- (2) https://maternityaudit.org.uk/FilesUploaded/RCOG_Inequalities%20Report_Lay_Summary.pdf
- (3) Khalifeh H, et al. Suicide in perinatal and non-perinatal women in contact with psychiatric services: 15-year findings from a UK national inquiry. *Lancet Psychiatry* (2016)