

# EVERYDAY LIFE IN THE ENERGY PRICE CRISIS



Cold homes



Damp and mould



Debt & diminishing financial resilience

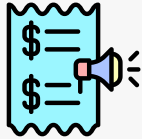


New & intensified coping strategies



Mental anguish and weariness

## CAUSES OF THE PROBLEM



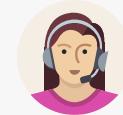
Rising prices



Inadequate income & insufficient state benefits



Uninsulated housing



Inaccessible and underfunded advice services



Having no voice

## WHAT NEEDS TO CHANGE



Reform the energy market to protect disadvantaged people



Insulate the housing stock



Create and fund a nationwide advice service

# Sheffield Hallam University

*Tackling fuel poverty - learning from winter research*

MIDDLEMISS, Lucie, SIMCOCK, Neil, AMBROSE, Aimee <<http://orcid.org/0000-0002-5898-6314>>, STOCKTON, Helen, CAVE, Tom, FRANCIS, Simon, ALBALA, Pepa Ambrosio, ATKINS, Ed, BOUZAROVSKI, Stefan, BUTLER, Catherine, COLLARD, Sharon, DAWNEY, Leila, DAVIES, Sara, HASTIE, Helena, MORRISON, Emily, MARTISKAINEN, Mari, ROBINSON, Caitlin, SNELL, Carolyn and SHARMA, Nickhill

Available from the Sheffield Hallam University Research Archive (SHURA) at:

<http://shura.shu.ac.uk/32436/>

## **Copyright and re-use policy**

Please visit <http://shura.shu.ac.uk/32436/> and <http://shura.shu.ac.uk/information.html> for further details about copyright and re-use permissions.