

Rendering the invisible visible

GOLDSCHMIED Z., Anita

Available from Sheffield Hallam University Research Archive (SHURA) at:

<https://shura.shu.ac.uk/31714/>

This document is the Presentation

Citation:

GOLDSCHMIED Z., Anita (2017). Rendering the invisible visible. In: BSA Medical Sociology Study Group - 49th annual conference programme, York, 13-15 Sep 2017. British Sociological Association. (Unpublished) [Conference or Workshop Item]

Copyright and re-use policy

See <http://shura.shu.ac.uk/information.html>

RENDERING THE INVISIBLE VISIBLE

FOLLOW THE **ACTORS** TO TRACE THE **NETWORKS** THAT CREATE HIDDEN DIS/ABILITIES

THEORISTS

"The moderns are quite right to want reality, language, society and being all at once. They are wrong only in believing that these sets are forever contradictory. Instead of always analyzing the trajectory of quasi-objects by separating these resources, can we not write as if they ought to be in continuous connection with one another?" (1993 p89)

Latour



"The symbolic is what puts an end to this disjunctive code and to separated terms. It is the utopia that puts an end to the topologies of the soul and the body, man and nature, the real and the non-real, birth and death. In the symbolic operation, the two terms lose their reality. The reality principle is never anything other than the imaginary of the other term." (1993 p133)

Baudrillard



How could the definition of hidden, mental dis/abilities be transformed? What are the specificities of hidden dis/abilities? How are they constructed? What type of agencies play a role and how do they influence the experience? How do we decide which reality is preferable?

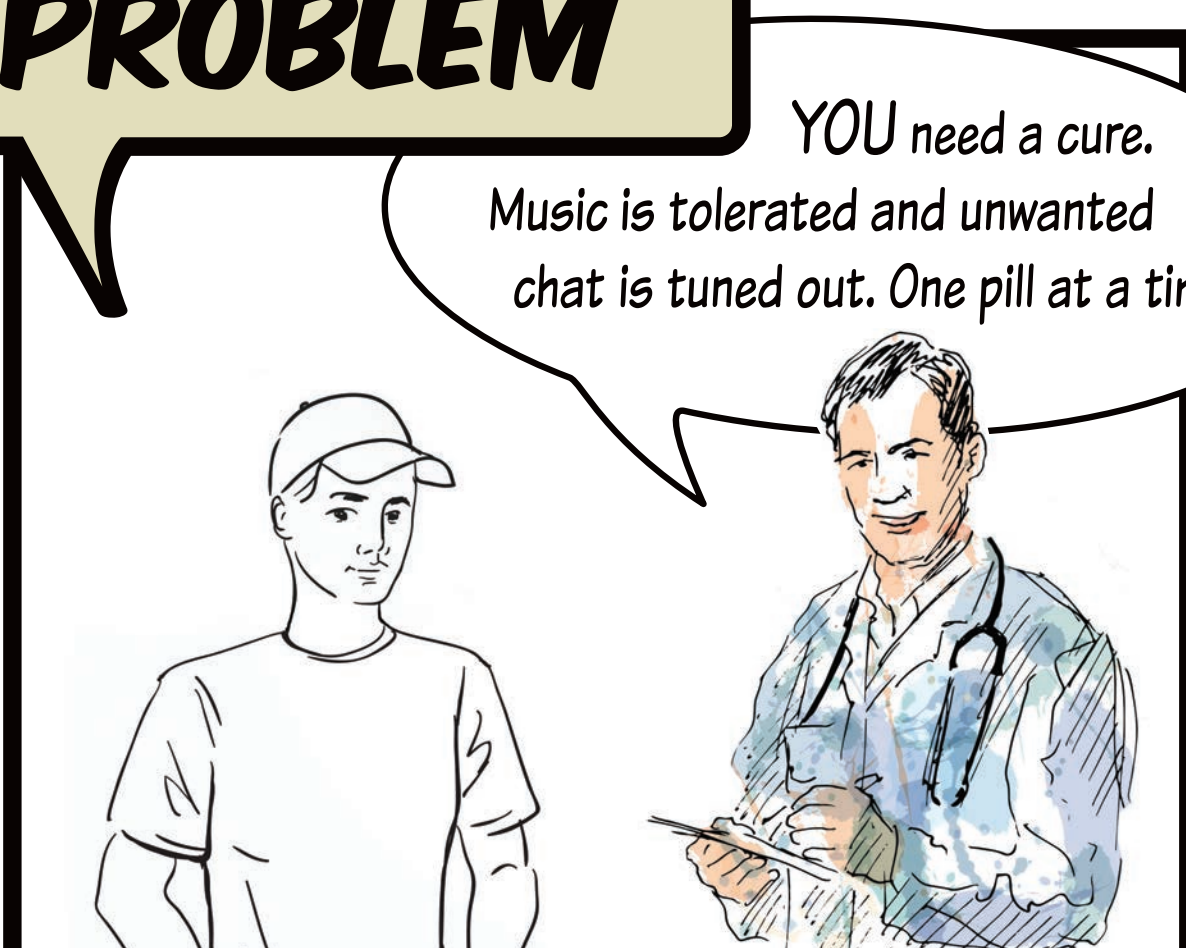
Jack



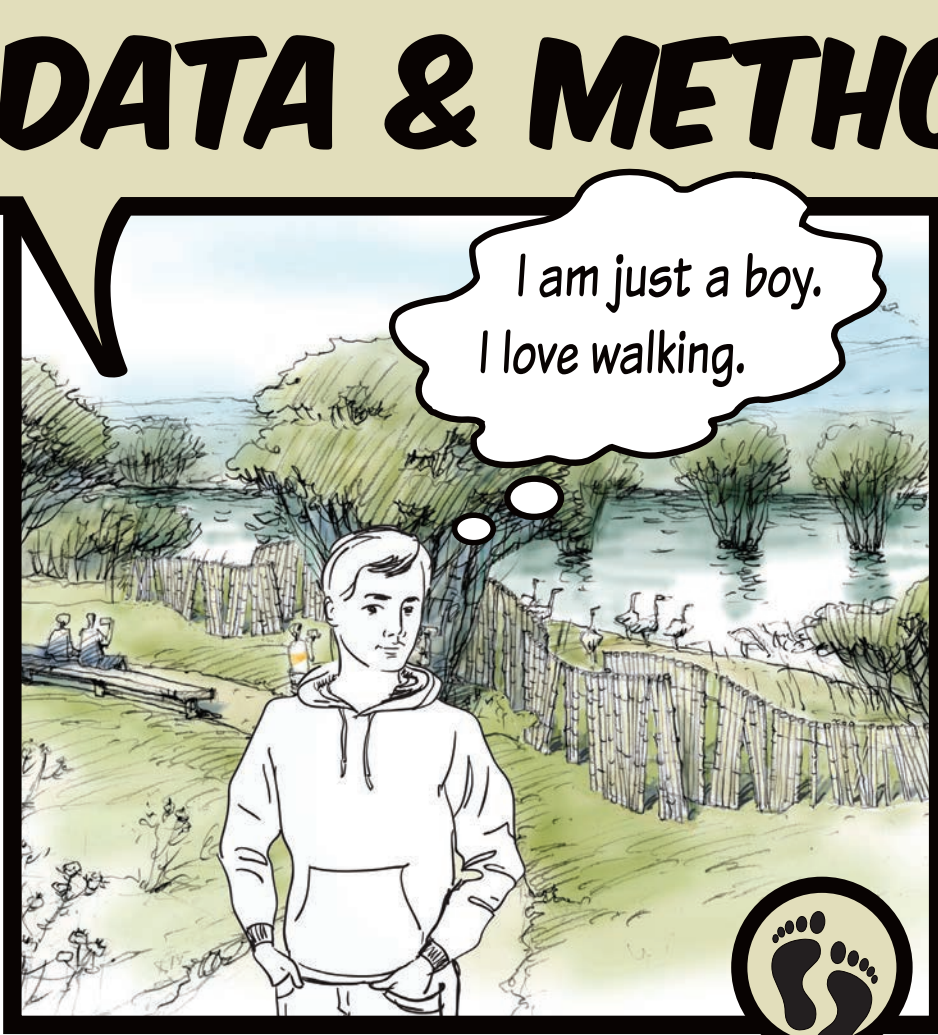
CONTEXT



PROBLEM



DATA & METHOD



IMPACT

HIDDEN, MENTAL DIS/ABILITIES HAVE NEVER BEEN A STABLE, ORDERED AND FIXED REALITY, BUT THEY ARE REPEATEDLY **PERFORMED, DISSOLVED AND REPRODUCED** IN THE COMPLEX INTERACTIONS OF MULTIPLE HUMAN AND NON-HUMAN ACTORS WITHIN WEBS OF CONNECTIONS. NETWORKS TEMPORARILY STABILISE, AND LABELS HELP CREATE THE IMPRESSION THAT HIDDEN DIS/ABILITIES ARE SET, PERMANENT AND DEFINITE STATES.

ANITA Z GOLDSCHMIED

Faculty of Arts, School of Humanities
University of Wolverhampton
Dr William Pawlett, Dr Meena Dhanda &
Dr Dean-David Holyoake (Supervisors)

ACKNOWLEDGEMENT to Hibou Sun and the other designers on Shutterstock and to Adobe Photoshop for letting a collaboration materialise between Art and Science and for rendering my invisible ideas visible. Special thanks to The Zumpalovs.