

## **Crystal structure, dielectric properties, and optical bandgap control in KNbO<sub>3</sub> –BiMnO<sub>3</sub> ceramics**

PASCUAL-GONZALEZ, Cristina, ELICKER, Carolina, MOREIRA, Mario L., CAVA, Sergio, STERIANOU, Iasmi, WANG, Dawei and FETEIRA, Antonio <<http://orcid.org/0000-0001-8151-7009>>

Available from Sheffield Hallam University Research Archive (SHURA) at:

<https://shura.shu.ac.uk/30762/>

---

This document is the Supplemental Material

### **Citation:**

PASCUAL-GONZALEZ, Cristina, ELICKER, Carolina, MOREIRA, Mario L., CAVA, Sergio, STERIANOU, Iasmi, WANG, Dawei and FETEIRA, Antonio (2022). Crystal structure, dielectric properties, and optical bandgap control in KNbO<sub>3</sub> –BiMnO<sub>3</sub> ceramics. *Journal of the American Ceramic Society*. [Article]

---

### **Copyright and re-use policy**

See <http://shura.shu.ac.uk/information.html>

# Crystal Structure, Dielectric Properties and Optical Bandgap Control in $\text{KNbO}_3\text{-BiMnO}_3$ Ceramics

Cristina Pascual-Gonzalez<sup>1,2</sup>, Carolina Elicker<sup>1,3</sup>, Mario L. Moreira<sup>3</sup>, Sergio Cava<sup>3</sup>, Iasmi Sterianou<sup>1</sup>, Dawei Wang<sup>4</sup> and Antonio Feteira<sup>1</sup>

<sup>1</sup> Materials and Engineering Research Institute, Sheffield Hallam University, Howard Street, S1 1WB, Sheffield, UK.

<sup>2</sup> Materials Science and Engineering Area, Rey Juan Carlos University, C/Tulipán s/n, 28933, Móstoles, Madrid, Spain.

<sup>3</sup> CCAF, IFM/CDTec-PPGCEM, Federal University of Pelotas, CEP: 96010-610 Pelotas, RS, Brazil.

<sup>4</sup> Shenzhen Institute of Advanced Electronic Materials, Shenzhen Institutes of Advanced Technology, Chinese Academy of Sciences, Shenzhen 518055, China.

\*Corresponding authors:

C. Pascual-Gonzalez, [cristina.pascualg@urjc.es](mailto:cristina.pascualg@urjc.es)

A. Feteira, [a.feteira@shu.ac.uk](mailto:a.feteira@shu.ac.uk)

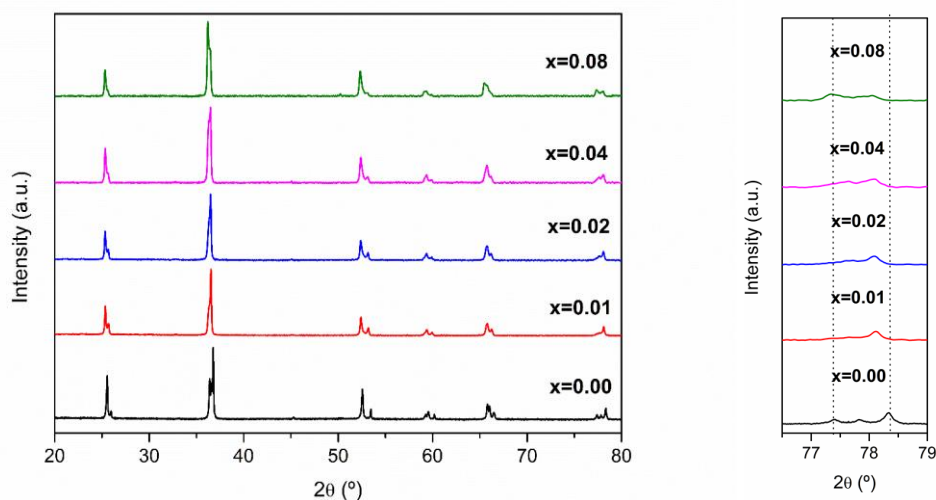


Figure S1. Room-temperature X-ray diffraction data for  $(1-x)\text{KNbO}_3\text{-}x\text{BiMnO}_3$  ( $x=0.01, 0.02, 0.04$  and  $0.08$ ) ceramics.

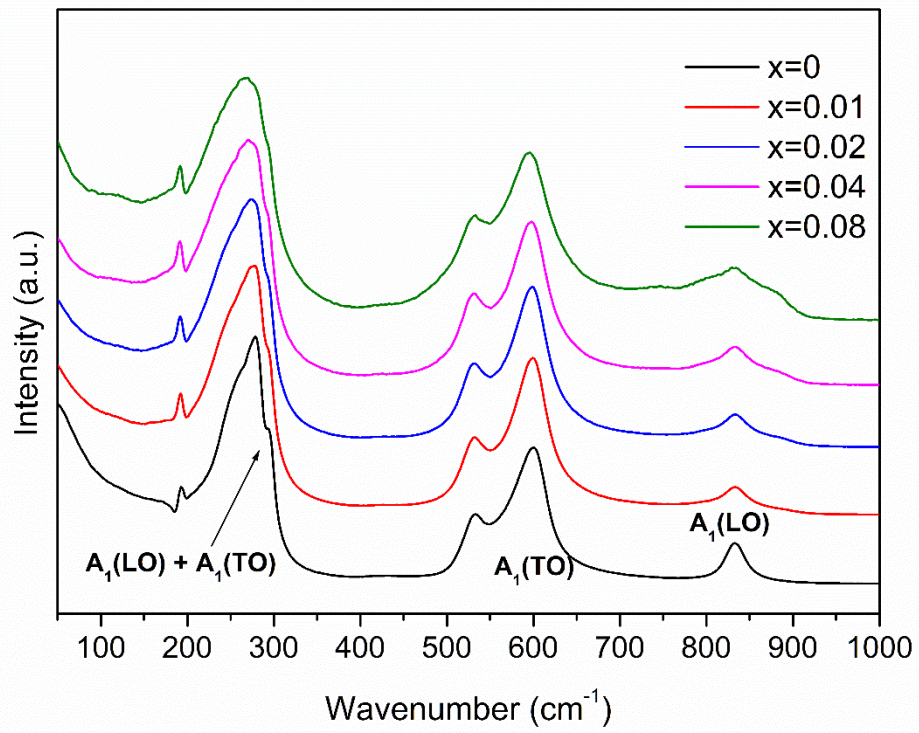


Figure S2. Room-temperature Raman spectra for  $(1-x)\text{KNbO}_3-x\text{BiMnO}_3$  ( $x=0.01, 0.02, 0.04$  and  $0.08$ ) ceramics.

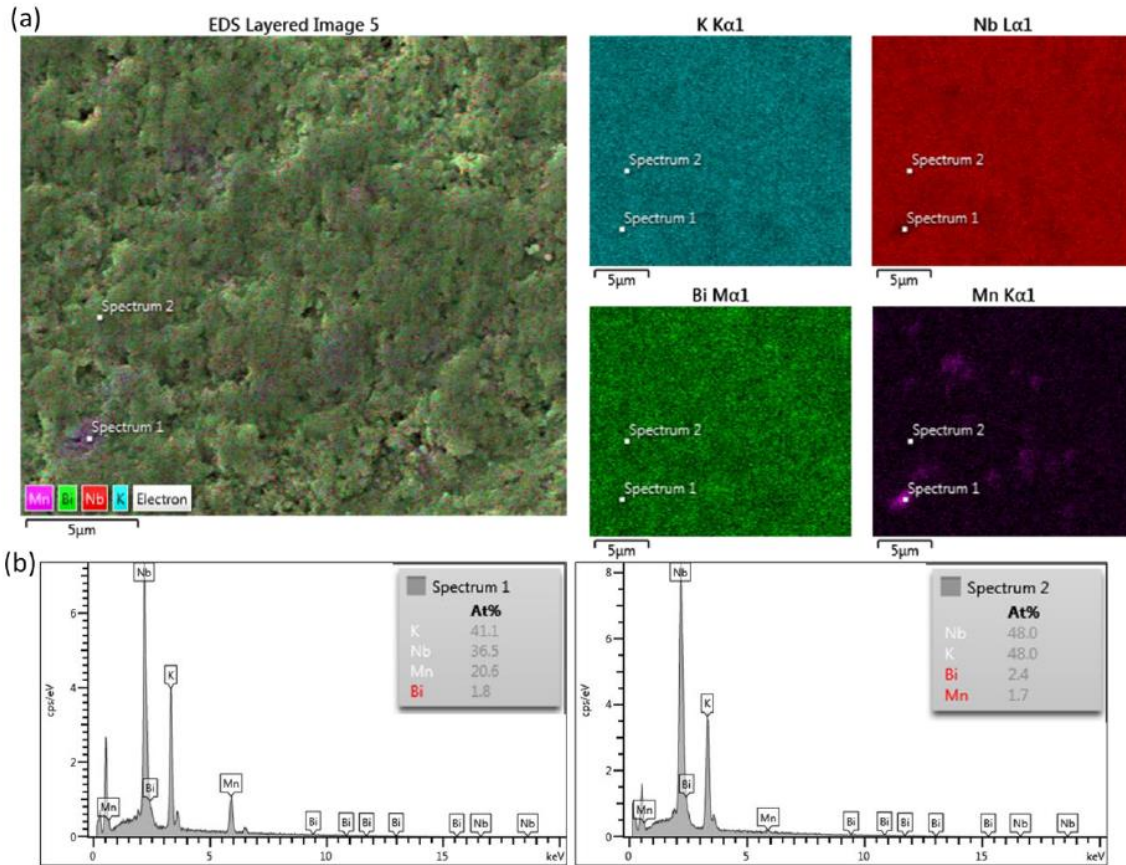


Figure S3: (a) SEM image of the examined region and EDX mapping of K, Nb, Bi and Mn for KNBM  $x=0.05$  (b) EDX spectra of Mn-rich region (Spectrum 1) is compared homogeneous region.

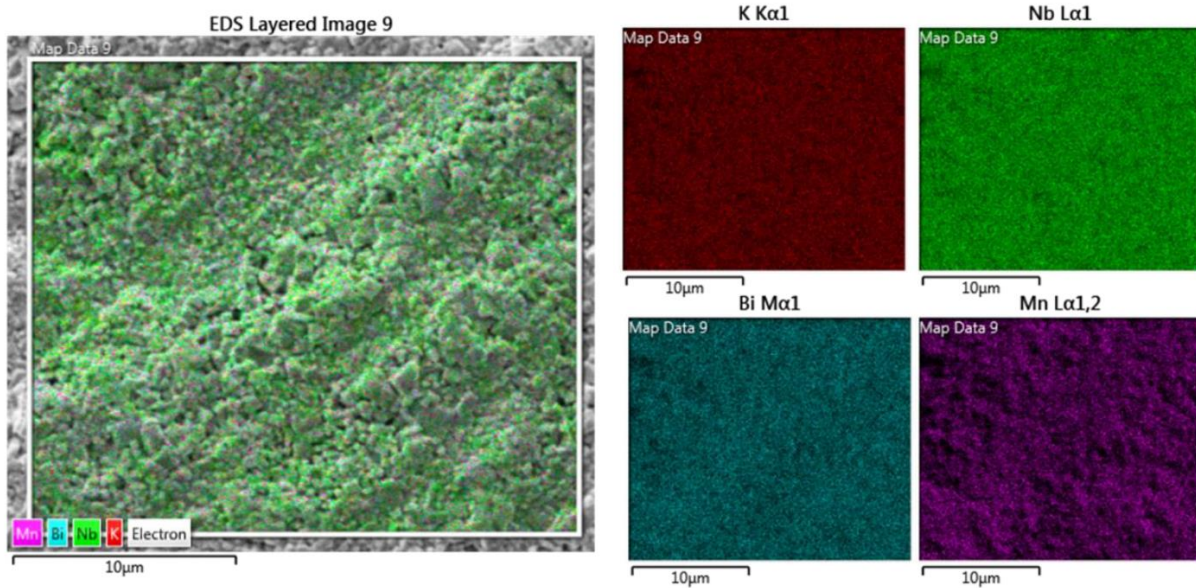


Figure S4: SEM image of the examined region and EDX mapping of K, Nb, Bi and Mn for KNBM  $x=0.25$ .