

Origin of the large electrostrain in BiFeO₃-BaTiO₃ based lead-free ceramics

WANG, G, FAN, Z, MURAKAMI, S, LU, Z, HALL, DA, SINCLAIR, DC, FETEIRA, Antonio <<http://orcid.org/0000-0001-8151-7009>>, TAN, X, JONES, JL, KLEPPE, AK, WANG, D and REANEY, IM

Available from Sheffield Hallam University Research Archive (SHURA) at:

<https://shura.shu.ac.uk/25264/>

This document is the Accepted Version [AM]

Citation:

WANG, G, FAN, Z, MURAKAMI, S, LU, Z, HALL, DA, SINCLAIR, DC, FETEIRA, Antonio, TAN, X, JONES, JL, KLEPPE, AK, WANG, D and REANEY, IM (2019). Origin of the large electrostrain in BiFeO₃-BaTiO₃ based lead-free ceramics. Journal of Materials Chemistry A, 7 (37), 21254-21263. [Article]

Copyright and re-use policy

See <http://shura.shu.ac.uk/information.html>

Journal of Materials Chemistry A

Materials for energy and sustainability

Accepted Manuscript

This article can be cited before page numbers have been issued, to do this please use: G. Wang, Z. Fan, S. Murakami, Z. Lu, D. Hall, D. Sinclair, A. Feteira, X. Tan, J. Jones, A. K. Kleppe, D. Wang and I. M. Reaney, *J. Mater. Chem. A*, 2019, DOI: 10.1039/C9TA07904A.



This is an Accepted Manuscript, which has been through the Royal Society of Chemistry peer review process and has been accepted for publication.

Accepted Manuscripts are published online shortly after acceptance, before technical editing, formatting and proof reading. Using this free service, authors can make their results available to the community, in citable form, before we publish the edited article. We will replace this Accepted Manuscript with the edited and formatted Advance Article as soon as it is available.

You can find more information about Accepted Manuscripts in the [Information for Authors](#).

Please note that technical editing may introduce minor changes to the text and/or graphics, which may alter content. The journal's standard [Terms & Conditions](#) and the [Ethical guidelines](#) still apply. In no event shall the Royal Society of Chemistry be held responsible for any errors or omissions in this Accepted Manuscript or any consequences arising from the use of any information it contains.

Origin of the large electrostrain in BiFeO₃-BaTiO₃ based lead-free ceramics

Ge Wang,^a Zhongming Fan,^b Shunsuke Murakami,^a Zhilun Lu,^a David. A. Hall,^c Derek. C. Sinclair,^a Antonio Feteira,^d Xiaoli Tan,^b Jacob. L. Jones,^e Annette K. Kleppe,^f Dawei Wang^{a*} and Ian. M. Reaney^a

a. Department of Materials Science and Engineering, University of Sheffield, Sheffield S1 3JD, UK.

b. Department of Materials Science and Engineering, Iowa State University, Ames, IA 50011, USA.

c. School of Materials, University of Manchester, Manchester, M13 9PL, UK.

d. Materials and Engineering Research Institute, Sheffield Hallam University, Sheffield S1 1WB, UK.

e. Department of Materials Science and Engineering, North Carolina State University, Raleigh, NC, 27695, USA

f. Diamond Light Source Ltd, Harwell Science and Innovation Campus, Didcot, OX11 0DE, UK.

*Corresponding author: email: dawei.wang@sheffield.ac.uk

Abstract

High electrostrain and breakdown strength, (1-x)BiFeO₃-0.3BaTiO₃-xNd(Li_{0.5}Nb_{0.5})O₃ (BF-BT-xNLN) ceramics were studied by *in-situ* synchrotron X-ray diffraction (XRD) in combination with Rietveld refinement and conventional transmission electron microscopy. At zero field, compositions transformed from majority ferroelectric rhombohedral to pseudocubic as the NLN concentration increased, with 0.27% strain achieved at 60 kV cm⁻¹ for x = 0.01. The large measured macroscopic strain was commensurate with peak shifting in XRD peak profiles, yielding 0.6% total strain at 150 kV cm⁻¹. Strain anisotropy of $\epsilon_{200} > \epsilon_{220} > \epsilon_{111}$ was observed but despite the large applied field, no peak splitting was detected. We therefore conclude that the large electrostrain is not achieved through a conventional relaxor to field induced long-range ferroelectric transition. Instead, the data supports a model where local polar regions distort in the direction of the applied field within multiple local symmetries (pseudosymmetry) without long range correlation. We propose that pseudosymmetry is maintained in BF-BT-xNLN even at high field (150 kV cm⁻¹) due to the large ion radii mismatch and competing ionic/covalent bonding between Ba²⁺ and Bi³⁺ ions.

Keywords: local polar distortion; synchrotron x-ray diffraction; electro-strain; bismuth ferrite; piezoelectric ceramics

Introduction

View Article Online
DOI: 10.1039/C9TA07904A

Bismuth ferrite (BF)-based solid solutions are considered candidates as lead-free functional ceramics due to their promising ferroelectric (FE) properties [1]. Among various BF-based solid solutions, $(1-x)\text{BiFeO}_3\text{-}x\text{BaTiO}_3$ (BF-BT) has attracted attention for compositions within or close to a mixed phase region (MPR) in which rhombohedral and cubic polymorphs coexist. These compositions have high ferroelectric Curie temperature ($T_c > 400\text{ }^\circ\text{C}$) but are also reported to have large remanent (P_r) and saturation (P_s) polarisation coupled with large piezoelectric coefficients (d_{33}), particularly for samples quenched from the sintering temperature [2, 3].

More importantly, large electric field-induced (E-induced) strains and strain coefficients (d_{33}^*) have been extensively reported in doped $(1-x)\text{BF-xBT}$ within the MPR for $0.25 \leq x \leq 0.35$. For example, butterfly-shaped strain-electric field (S-E) loops are obtained for $x = 0.25$ and 0.3 ceramics that exhibit ~ 0.1 and 0.26% strain under 70 and 100 kV cm^{-1} , respectively [4]; however, substituting 0.5% $\text{Bi}(\text{Zn}_{2/3}\text{Nb}_{1/3})\text{O}_3$ results in larger value of strains ($\sim 0.43\%$, $d_{33}^* \sim 424\text{ pm V}^{-1}$) under equivalent fields (100 kV cm^{-1}). [5] The substitution of a third component (often a nominal perovskite composition) in the solid solution, results in an FE to relaxor-ferroelectric (RFE) phase transition and enhances strain [6, 7]. So far, the highest $d_{33}^* \sim 544\text{ pm V}^{-1}$ with strain $\sim 0.27\%$ at 50 kV cm^{-1} was obtained for BF-0.3BT doped with $5\%\text{Bi}(\text{Mg}_{2/3}\text{Nb}_{1/3})\text{O}_3$, which also exhibited good temperature stability up to $\sim 175\text{ }^\circ\text{C}$. [8]

Optimized electrostrain in BF-BT is typically achieved by stoichiometric doping on the A/B sites, shifting the phase assemblage from majority FE to mixed FE/RFE to RFE as doping concentration increases. However, the detailed mechanism behind the large strain in BF-BT-based materials is not well understood with only a few limited studies performed. For example, a comparison between unpoled and poled $0.75\text{BF-}0.25\text{BT}$ ceramics was carried out “*ex-situ*” using high-resolution transmission electron microscopy (HRTEM). [9] A mix of nanodomains and long-range ordered rhombohedral FE domains was observed for the unpoled and poled states [9] but this composition was not optimised for strain and already dominantly FE, prior to poling. High-energy synchrotron X-ray diffraction (XRD) [10, 11] *in-situ* electric field poling experiments have also been performed on $0.67\text{BF-}0.33\text{BT}$ and $0.6\text{BF-}0.3\text{BT-}0.1\text{Bi}(\text{Mg}_{1/2}\text{Ti}_{1/2})\text{O}_3$. The crystal structure remained pseudocubic prior, during and after application of electric field, characterised by single $\{110\}_p$, $\{111\}_p$ and $\{200\}_p$ XRD reflections. More recently, *in-situ* poling of La-doped $0.75\text{BF-}0.25\text{BT}$ ceramics was carried out to confirm the contribution of both lattice strain and domain switching to total estimated strain. [12] However, experimental S-E results were not reported, hence the results were uncorrelated with the estimated strain obtained from their *in-situ* XRD studies. [12]

The aim of the present study is to investigate the origin of the large electrostrain using *in-situ* poling synchrotron XRD in BF-BT-based materials optimised for d_{33}^* . The estimated strain from peak shifts is compared against S-E measurements and a new model for the origin of the large d_{33}^* and high strain in BF-BT systems proposed. Highly active regions with multiple local symmetries (pseudosymmetry) align with the applied field but do not coalesce into a single symmetry, long-range ordered FE state, due to competition between ionic and covalent bonding of the Ba^{2+} and Bi^{3+} ions and mismatch of their ionic radii.

Experimental

(1-x)BiFeO₃-0.3BaTiO₃-xNd(Li_{0.5}Nb_{0.5})O₃ (BF-BT-xNLN, 0 ≤ x ≤ 0.05) ceramics were synthesized using solid-state reaction. Analytical-grade BaCO₃, Fe₂O₃, Bi₂O₃, TiO₂, Nd₂O₃, Li₂CO₃ and Nb₂O₅ powders were weighed in the appropriate stoichiometric proportions and ball milled for 16 h. After calcination, 0.1 wt% of Mn₂O₃ was added, followed by further milling for 16 h. Powders were dried, uniaxially pressed into 10 mm diameter pellets and sintered for 2 h at 980-1070 °C in air [4, 5]. The density of the sintered ceramics was measured using the Archimedes method. Surfaces of as-sintered ceramics were ground and silver paste electrodes applied. P-E and S-E loops were obtained using an aixACCT TF 2000E ferroelectric tester at 1 Hz. Temperature-dependent dielectric properties were measured using an Agilent 4184A precision LCR meter from room temperature (RT) to 600 °C at 1, 10, 100 and 250 kHz.

An FEI Tecnai G2-F20 transmission electron microscopy (TEM) and operated at 200 kV was employed for TEM observation. The TEM specimen with a 3 mm diameter was prepared through mechanical dimpling, followed by low-voltage Ar ion-milling to perforation.

In-situ poling high-energy synchrotron XRD experiments were performed at I15 Diamond light source with a photon energy of 72 keV (0.1722 Å). Prior to *in-situ* XRD experiments, ceramic discs were ground, gold sputtered on two sides to form electrodes, cut into bars (8 × 0.5 × 0.5 mm) and annealed for 4 h at 700 °C to eliminate residual stresses. The X-ray beam was focussed and collimated to 70 µm in diameter directly in front of the sample. The bar-shape specimens were placed in silicone oil in a custom-designed polyimide sample holder. During *in-situ* poling measurements, the sample holder was electrically connected with a high voltage amplifier (Matsusada EC-10). *In-situ* XRD was carried out in transmission and 2-D diffraction patterns were collected using a Perkin-Elmer XRD 1621 flat-panel detector located approximately 1 metre downstream of the sample. Collected images were converted into conventional one-dimensional XRD patterns corresponding to a range of grain orientations (β) relative to the poling direction with a step size of 15° using Dawn software. [13] Fitting of selected diffraction peaks was carried out using Topas 5 software. [14] Diffraction patterns with β = 0 or β = 90° were obtained, parallel and perpendicular, respectively, to the electric field to determine longitudinal and transverse strain behaviour. [15]

Results and discussion

Full-pattern Rietveld refinement and transmission electron microscopy (zero field)

Full pattern Rietveld refinement was performed for all compositions in the unpoled state with the best fits being obtained using rhombohedral (*R3c*) and cubic (*Pm3̄m*) phases, as previously reported for other BF-BT compositions. [16-18], A mixed-phase of rhombohedral (62%) and cubic (38%) polymorphs was obtained for BF-0.3BT, yielding excellent GOF ~ 1.19, as shown in Figure 1 which illustrates the {111}_p, {200}_p, {211}_p and {220}_p peaks. As a result of the majority *R3c* phase, FE P-E and S-E loops were obtained from BF-0.3BT ceramics with x < 0.03, as shown in Supplementary Information, Figure S1.

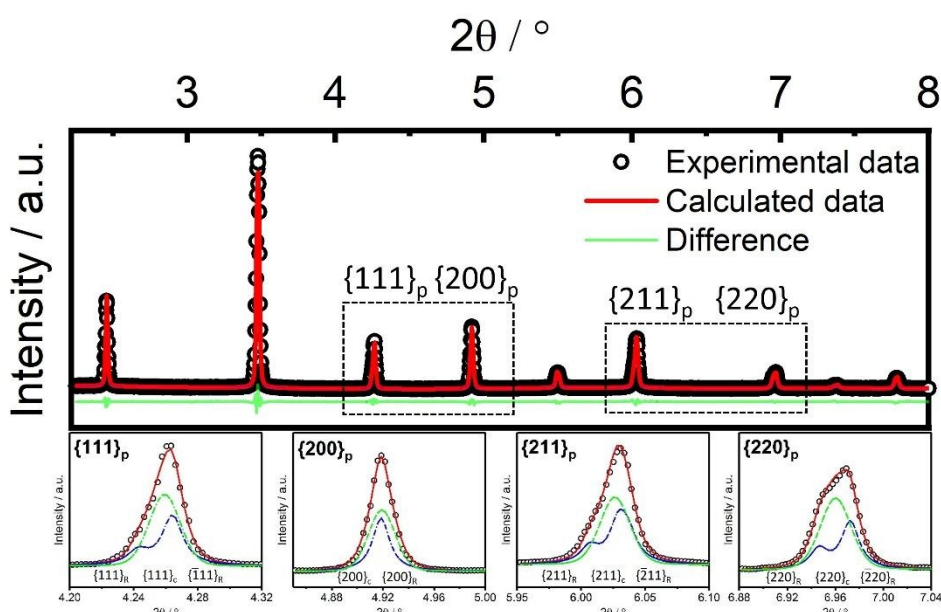


Figure 1. High energy synchrotron XRD pattern and corresponding Rietveld refinement results for the unpoled BF-0.3BT ceramic with contributions of rhombohedral ($R3c$) and cubic ($Pm\bar{3}m$) phases to individual peak profiles in the calculated pattern.

For $x = 0.01$, the MPR becomes majority cubic (63%) and minority rhombohedral phase (37%), resulting in a pronounced shift in the position of the peak in the ϵ_r -T plots as a function of frequency (Supplementary information, Figure S2). For $x > 0.01$ a dominant cubic phase is evident in the refined data, shown in Figure 2, with commensurate reductions in polarisation and strain. (Supplementary information, Figure S1). The crystallographic parameters obtained from the Rietveld refinements for all compositions in BF-BT-xNLN are summarized in Table 1.

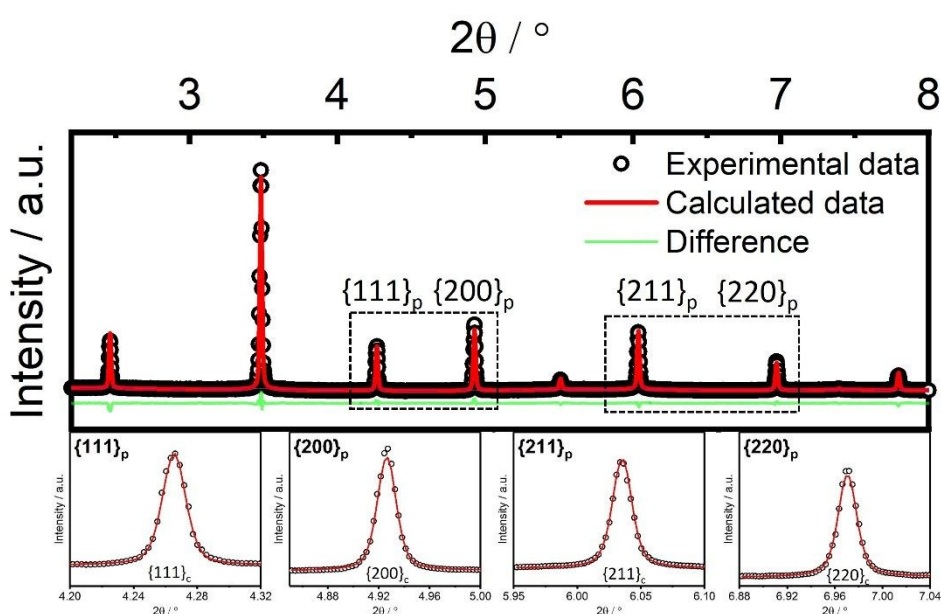


Figure 2. High energy synchrotron XRD pattern and corresponding Rietveld refinement results for the unpoled BF-0.3BT-0.03NLN ceramic with a single cubic ($Pm\bar{3}m$) phase indexed to individual peak profiles in the calculated pattern.

Table 1. Summary of results obtained from Rietveld refinement of XRD for BF-0.3BT-xNLN ceramics. *R: $R3c$ phase, C: $Pm\bar{3}m$ phase, GOF: goodness of fitting

x	Phases / %		Lattice parameter			Cell volume		R _{wp}	R _{exp}	GOF
	R	C	R		C	R / Å ³	C / Å ³			
			a / Å	c / Å	a / Å					
0	62	38	5.6608(2))	13.9445(9))	4.0098(1))	386.98(1))	64.47(6))	4.03	3.40	1.19
0.005	55	45	5.6615(10))	13.9461(2))	4.0115(9))	387.25(3))	64.55(1))	5.16	3.74	1.38
0.01	37	63	5.6638(4))	13.9470(8))	4.0130(7))	387.47(10))	64.62(5))	5.63	3.69	1.52
0.02	8	92	5.6716(6))	13.9075(13))	4.0035(7))	387.43(4))	64.42(9))	6.37	4.20	1.51
0.03	0	100	N/A	N/A	4.0034(5))	383.19(10))	64.17(3))	3.60	4.53	1.26

The domain structure for BF-BT-xNLN ($x = 0.00, 0.01$ and 0.03) ceramics was examined using diffraction contrast TEM, Figure 3. Undoped BF-BT ceramic has a complex domain morphology due to the existence of mixed phase, Figure 3a. Tweed domains are most commonly observed while some larger wedge-shaped domains are also present (area 1 and 2). The $R3c$ structure is evidenced by the appearance of $\frac{1}{2}\{000\}$ superlattice diffraction spots which arise due to antiphase tilting of the O-octahedra. The presence of an $R3c$ structure and domains is consistent with the refinement data shown in Table 1 and the P-E and S-E loops in Figure S1 (Supplementary information). For $x = 0.01$, most tweed domains as well as larger wedge-shaped domains are absent, Figure 3b. Instead, the BF-0.3BT-0.01NLN exhibits a core-shell structure composed of small tweed domains (core, $R3c$) and nanodomains (shell, cubic), consistent with structural refinements (Table 1), narrower P-E loops and a reduction in negative strain, Figure S1. For BF-0.3BT-0.03NLN (Figure 3c), only nanodomains are observed, commensurate with a pseudocubic structure (Table 1), narrow P-E and S-E loops characteristic of a relaxor, Figure S1. Moreover, $\frac{1}{2}\{000\}$ superstructure reflections associated with the $R3c$ phase are absent. To further investigate the effect of applied field on the structure BF-BT-NLN ceramics, *in-situ* poling experiments were undertaken initially at 60 kV cm^{-1} (typically used to obtain S-E loops) and also at 150 kV cm^{-1} which is $\sim 2\text{-}3$ times higher than that commonly used to obtain d_{33}^* in BF-BT based ceramics.

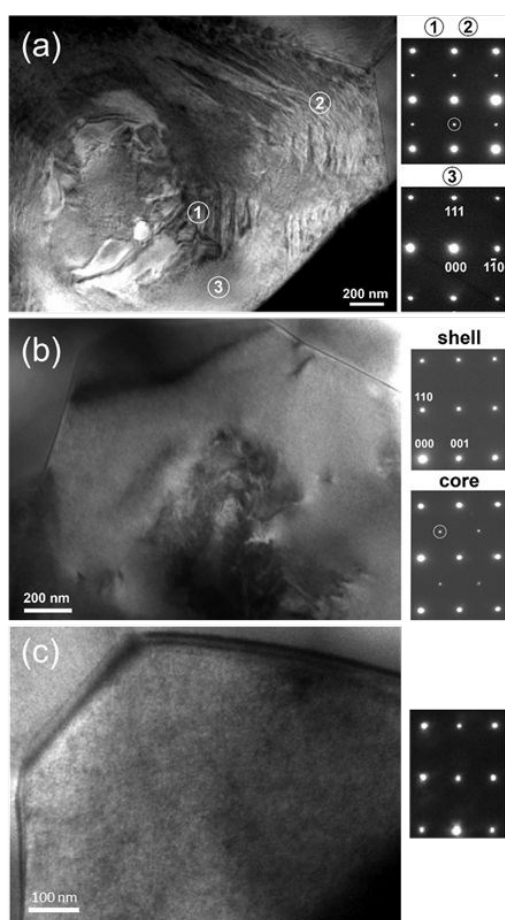


Figure 3. TEM domain morphology with diffraction spots for (a) BF-0.3BT, (b) BF-0.3BT-0.01NLN and (c) BF-0.3BT-0.03NLN ceramics.

In-situ poling synchrotron x-ray diffraction (60 kV cm⁻¹)

In bulk ceramics, direct evidence of the behaviour of the peaks, or strains, can be obtained using high energy *in-situ* x-ray diffraction to investigate E-induced structural transformation, domain switching and lattice deformation. Macroscopic structural transformations in perovskites are characterised by changes in $\{111\}_p$ and $\{200\}_p$ peak profiles prior to and after application of the field. [19-25] Initially, in this contribution, the macroscopic strain is evaluated by observation of $\{111\}_p$, $\{200\}_p$ and $\{220\}_p$ peaks at 60 kV cm⁻¹ with a step of 5 kV cm⁻¹. [12, 19] Measurements parallel ($\beta = 0^\circ$) and perpendicular ($\beta = 90^\circ$) to the direction of the field illustrate any domain re-orientation and associated lattice strain. The strain is calculated using $\{111\}_p$, $\{200\}_p$ and $\{220\}_p$ diffraction peaks and quantified using an effective average lattice spacing, d_{hkl} for $\beta = 0$ and 90° . With contribution from electrostrain response, e.g. electrostriction and/or piezoelectricity, here the transverse strains are negative (compressive) and the longitudinal strains are positive (tensile), respectively.

Peak profile fitting was performed in Matlab using a pseudo-Voigt function and the effective lattice strain under different electric fields for different Miller indices (hkl) estimated using the lattice spacings corresponding to the unpoled reference state, $d_{hkl}(un)$, and under field, $d_{hkl}(E)$ [26], equation 1:

$$\varepsilon_{hkl}(E) = \frac{d_{hkl}(E) - d_{hkl}(un)}{d_{hkl}(un)} \quad (\text{Equation 1})$$

The E-induced lattice strain is estimated using the weighted-average strain of individual {hkl} planes, ϵ_{hkl} , as introduced by Daymond [27]:

$$\epsilon_{la} = \frac{\sum_{hkl} T_{hkl} m_{hkl} \epsilon_{hkl}(\beta)}{\sum_{hkl} T_{hkl} m_{hkl}(\beta)} \quad (\text{Equation 2})$$

where $\epsilon_{hkl}(\beta)$ is the strain along the direction parallel to the direction of β for the {hkl} orientation, T_{hkl} is the texture index, and m_{hkl} are multiplicities of crystal {hkl} planes. The materials are treated as a cubic structure with random grain texture, giving a T_{hkl} value of 1 for any hkl. The m_{hkl} values for {111}, {200} and {220} crystal planes are 8, 6 and 12, respectively. [15, 28]

The domain switching behaviour in polycrystalline ferroelectric ceramics leads to anisotropic dimensional deformation, as well as lattice strain. According to Jones and co-workers [20, 21, 28], the spontaneous strain for single crystal distortion associated with non-180° domain switching for a rhombohedral cell can be defined as follows:

$$S = \frac{d_{111} - d_{\bar{1}11}}{d_{111}} \quad (\text{Equation 3})$$

The domain switching fraction for a single grain varies with grain orientation relative to the external electric field. Thus, the total value of extrinsic strain, ϵ_{ds} , is obtained using integrated strain calculated over a range of grain orientations, $0^\circ < \beta < 90^\circ$, as shown in equation 4 [28].

$$\epsilon_{ds} = S \int_0^{2/\pi} [m\eta \cos^2(\beta)] \sin(\beta) d\beta \quad (\text{Equation 4})$$

where S is spontaneous strain, m is multiplicity, η is volume fraction of switched domains and β is the grain orientation relative to the external electric field. XRD patterns for each azimuthal section are obtained via *in-situ* poling experiments to determine the peak intensities and peak position. η for the $R3c$ phase is calculated using Jones' method [20, 28].

By this means, the intrinsic (lattice strain) and extrinsic (domain switching) contributions to the total macroscopic strain can be calculated in principle. In the present investigation, it was found that it was not possible to estimate the relative domain fractions in the rhombohedral phase as a function of grain orientation or electric field level, since the individual peaks associated with the (111) and ($\bar{1}11$) reflections were not clearly distinguished. Therefore, the weighted-average (Daymond) method was adopted instead, using Equation 2 in order to estimate the total macroscopic strain from the representative $\{111\}_p$, $\{200\}_p$ and $\{220\}_p$ peak profiles.

The variations in the $\{111\}_p$, $\{200\}_p$ and $\{220\}_p$ peak profiles under the application of two cycles of electric field for 0.7BF-0.3BT at $\beta = 0$ and 90° are shown in Figure 4. All three peaks at $\beta = 0^\circ$ appear as doublets, corresponding to mixed-phase coexistence. Under application of an electric field, peaks shift to lower and higher 2θ parallel and perpendicular to the electric field direction, respectively but there is no further peak splitting, indicating the absence of an E-induced transformation. The d-spacing (d) and full width at half maximum (FWHM) for $\{111\}_p$ and $\{200\}_p$ XRD reflections at $\beta = 0^\circ$ under electric field are shown in Figure S3 (Supplementary information). During two cycles, the d_{111} and d_{200} values increase with increasing amplitude of electric field, indicating a lattice expansion along the applied electric field direction. In undoped BF-BT, $\{111\}_p$ and $\{200\}_p$ peaks exhibit cyclic broadening under the influence of the

applied electric field (Figure S3, Supplementary information), most likely indicating some nano to mesoscale growth of domains.

The effective strain of $\{111\}_p$, $\{200\}_p$ and $\{220\}_p$ peaks for BF-0.3BT are shown in Figure 4(c-e). Here, the individual strains, ϵ_{111} , ϵ_{200} and ϵ_{220} are calculated using peak positions, yielding strain anisotropy with $\epsilon_{200} > \epsilon_{220} > \epsilon_{111}$ at $\beta = 0$ and 90° . The effective strain at $\beta = 0^\circ$ reaches approximately $\epsilon \sim 0.20\%$ at 60 kV cm^{-1} . At $\beta = 90^\circ$, the negative effective strain is obtained approximately half of the magnitude of the positive strain, $\epsilon \sim 0.09\%$. The E-induced lattice strains, calculated based on equation 2, are $+0.18\%$ and -0.08% at $\beta = 0$ and 90° , respectively. Compared with the directly-measured macroscopic S-E results (Figure 4f), the positive strain ($+0.18\%$) is close to that of the peak-to-peak strain (0.16%). Similar results were obtained for 0.7BF-0.3BT-0.005NLN ceramics, as illustrated in Figure S4 (Supplementary information) but with slightly high strains ($+0.20\%$).

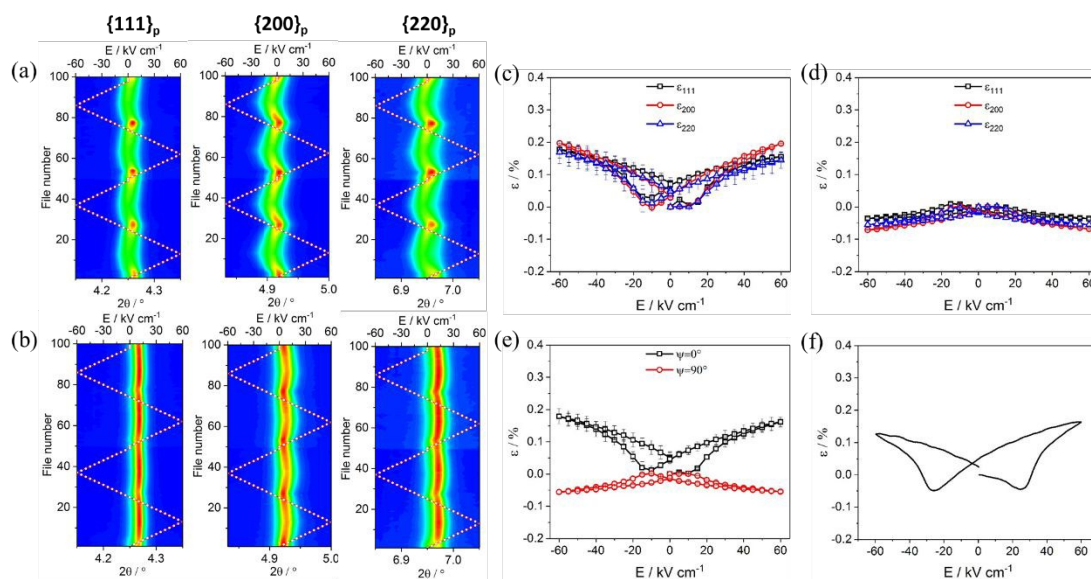


Figure 4. Contour plots of the $\{111\}_p$, $\{200\}_p$ and $\{220\}_p$ peak profiles at (a) $\beta = 0^\circ$ and (b) $\beta = 90^\circ$ obtained from the *in-situ* XRD experiment for BF-0.3BT, with two cycles of electric field poling under $\pm 60 \text{ kV cm}^{-1}$; effective lattice strains calculated from representative peaks with grain orientation for (c) $\beta = 0^\circ$ and (d) $\beta = 90^\circ$ for BF-0.3BT; (e) The E-induced lattice strains for $\beta = 0^\circ$ and $\beta = 90^\circ$ for BF-0.3BT; (f) directly measured macroscopic S-E loop for BF-0.3BT.

For $x = 0.01$, only single peaks are observed in the unpoled state which remain during and after application of the electric field. However, the peak positions shift with external electric field for all representative peaks during two cycles, Figure 5. The $\{111\}_p$ and $\{200\}_p$ XRD peak profiles at $E = 0$ and $E = 60 \text{ kV cm}^{-1}$, as well as calculated d-spacing and FWHM for $\{111\}_p$ and $\{200\}_p$ XRD reflections at $\beta = 0^\circ$ under electric field are shown in Figure 6. During two cycles, the d_{200} changes more significantly than d_{111} with increasing amplitude of electric field. As illustrated in Figure 5, the FWHM values for $\{111\}_p$ and $\{200\}_p$ XRD reflections remain almost constant during application of the electric field but the large electrostrain would nonetheless result in the development of some microstresses at grain boundaries. These however, are anticipated to be lower than in a material which undergoes a field induced transition from relaxor to long range ferroelectric order.

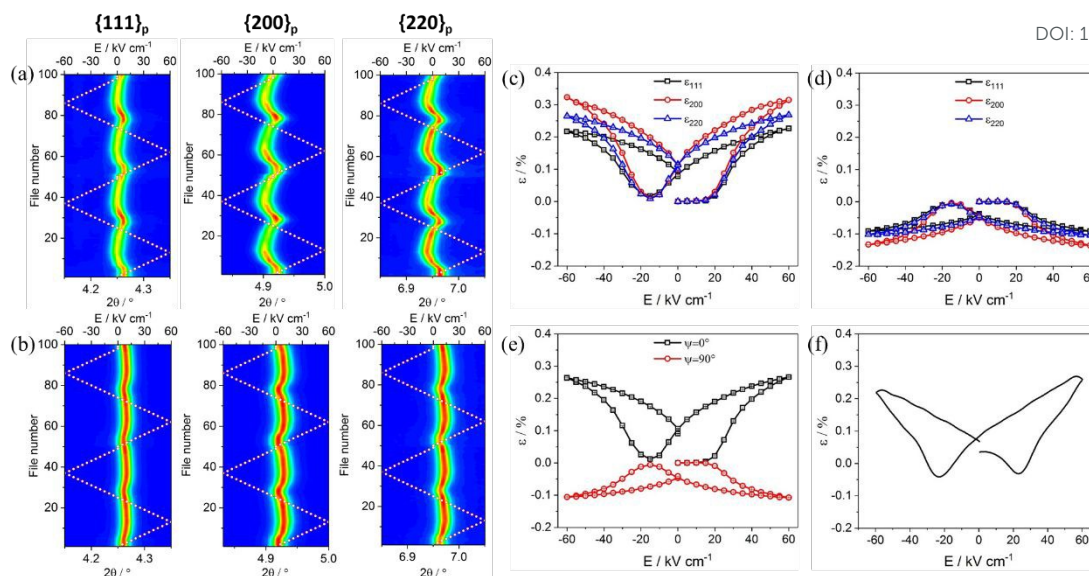


Figure 5. Contour plots of the $\{111\}$, $\{200\}$ and $\{220\}$ peak profiles at (a) $\beta = 0^\circ$ and (b) $\beta = 90^\circ$ obtained from the *in-situ* XRD experiment for BF-0.3BT-0.01NLN, with two cycles of electric field poling under $\pm 60 \text{ kV cm}^{-1}$; effective lattice strains calculated from representative peaks with grain orientations of (c) $\beta = 0^\circ$ and (d) $\beta = 90^\circ$ for BF-0.3BT-0.01NLN; (e) The E-induced lattice strain for $\beta = 0^\circ$ and $\beta = 90^\circ$ for BF-0.3BT; (f) directly measured macroscopic S-E loop for BF-0.3BT-0.01NLN.

The individual strains, $\epsilon_{111} \sim 0.32\%$, $\epsilon_{200} \sim 0.26\%$ and $\epsilon_{220} \sim 0.21\%$ obtained at $\beta = 0^\circ$ for BF-BT-0.01NLN under an electric field of 60 kV cm^{-1} exhibit strain anisotropy, with the E-induced lattice strain strains of $+0.28\%$ at $\beta = 0^\circ$ and -0.12% at $\beta = 90^\circ$, similar to that determined from directly measured S-E loops ($\sim 0.27\%$) (Figure 5f). Negative strains, $S_{\text{neg}} \sim 0.03\%$ and $S_{\text{rem}} \sim 0.08\%$, are still evident, indicating a small contribution from the minor $R3c$ phase but suggesting that the majority of strain arises from distortion of the pseudocubic phase. For $x = 0.02$, qualitatively similar data to $x = 0.01$ were obtained, as illustrated in Figure S5 (Supplementary information).

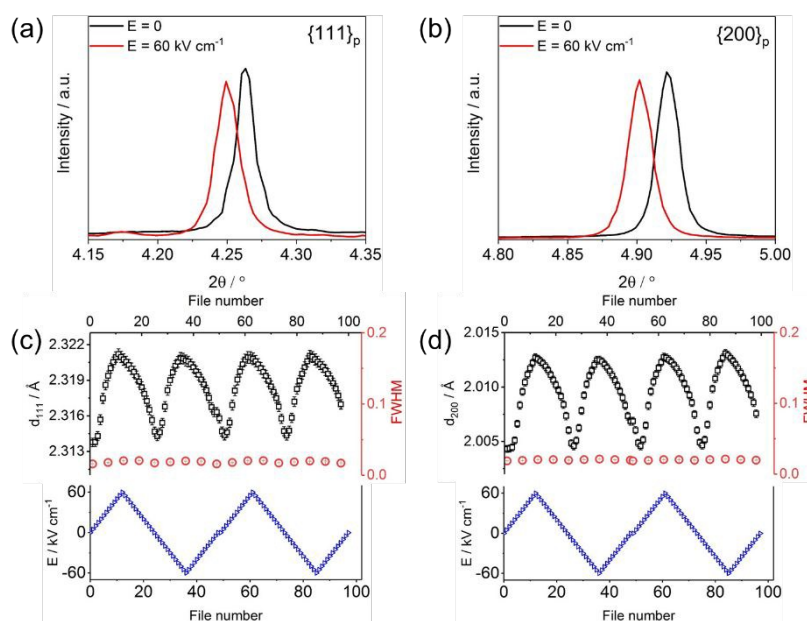


Figure 6. (a) $\{111\}_p$ and (b) $\{200\}_p$ XRD peak profiles under 0 and 60 kV cm^{-1} ; d-spacing and FWHM of (c) $\{111\}_p$ and (d) $\{200\}_p$ XRD peak profiles at $\beta = 0^\circ$ obtained from the *in-situ* XRD experiment for BF-0.3BT-0.01NLN, with two cycles of electric field poling under $\pm 60 \text{ kV cm}^{-1}$.

BF-0.3BT-0.03NLN refines to a single pseudocubic structure prior to and after poling with less significant peak shifts under electric field (Figure 7). The d-spacing and FWHM for $\{111\}_p$ and $\{200\}_p$ XRD reflections for $\beta = 0^\circ$ under electric field are shown in Figure S6 (Supplementary information). Compared to other compositions, only small variations in d_{111} and d_{200} without any changes in FWHM are observed. The E-induced lattice strains are $\sim +0.08\%$ and -0.03% for compressive and tensile directions (Figure 6), which are consistent with the directly measured S-E results.

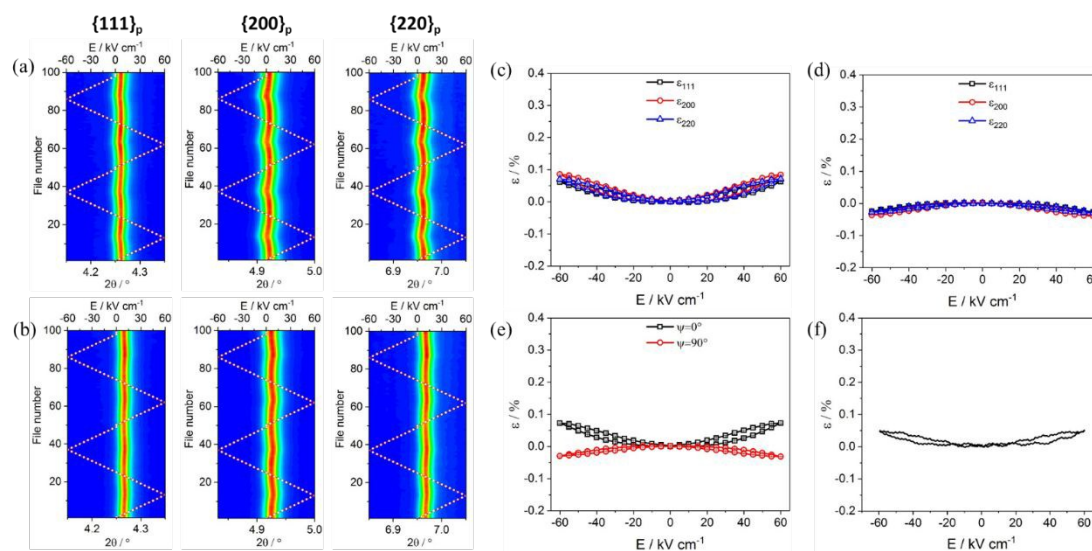


Figure 7. Contour plots of the $\{111\}$, $\{200\}$ and $\{220\}$ peak profiles for (a) $\beta = 0^\circ$ and (b) $\beta = 90^\circ$ obtained from the *in-situ* XRD experiment for BF-0.3BT-0.03NLN, with two cycles of electric field poling under $\pm 60 \text{ kV cm}^{-1}$; effective lattice strains calculated from representative peaks with grain orientations of (c) $\beta = 0^\circ$ and (d) $\beta = 90^\circ$ for BF-0.3BT-0.03NLN; (e) The E-induced lattice strain for $\beta = 0^\circ$ and $\beta = 90^\circ$ for BF-0.3BT-0.03NLN; (f) directly measured macroscopic S-E loop for BF-0.3BT-0.03NLN.

The absence of an apparent E-induced long-range FE state during *in-situ* measurements at 60 kV cm^{-1} is potentially due to an insufficiently large applied field to overcome the local distortions of the lattice relating to the charge/strain distributions of the constituent ions. In particular, the A-site contains Ba ($r_{\text{Ba}} = 1.61 \text{ \AA}$) and Bi ($r_{\text{Bi}} = 1.32 \text{ \AA}$) ions which are not only dissimilar in size but which also have fundamentally different (ionic and covalent, respectively) bonding with respect to O ions in the cuboctahedral interstice.[29] Consequently, ultra-high field measurements (150 kV cm^{-1}) were performed on BF-BT-0.01NLN which exhibited the largest strain at 60 kV cm^{-1} to determine whether long-range ferroelectric order could be detected.

In-situ ultra-high electric field poling XRD (150 kV cm^{-1})

The variations in the representative $\{111\}_p$, $\{200\}_p$ and $\{220\}_p$ peak profiles, along with the external electric field direction ($\beta = 0^\circ$) is illustrated as 3D contour maps in Figure 8. No peak broadening and splitting is observed in the three single peaks prior to, during or after poling,

confirming again that no macroscopic E-induced structural transformation occurs up to 150 kV cm⁻¹. View Article Online
DOI: 10.1039/C9TA07904A

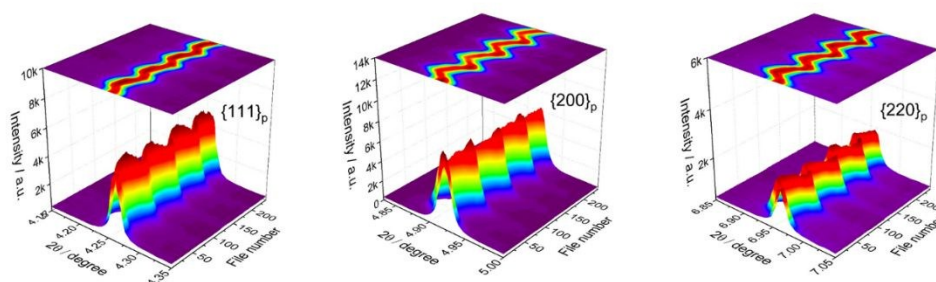


Figure 8. Surface contour plots to illustrate changes in the {111}_p, {200}_p and {220}_p XRD peak profiles (at $\beta = 0^\circ$) for BF-BT-0.01NLN under application of 2 cycles of electric field of ± 150 kV cm⁻¹.

The individual lattice strains and the E-induced lattice strain for BF-BT-0.01NLN obtained from the shifts in these peak profiles are shown in Figure 9, for 6 complete cycles of the alternating electric field. At 150 kV cm⁻¹, the highest strain values of ϵ_{111} , ϵ_{200} and ϵ_{220} at $\beta = 0^\circ$ are $\sim 0.54\%$, 0.74% and 0.58% , respectively, exhibiting strain anisotropy, $\epsilon_{200} > \epsilon_{220} > \epsilon_{111}$, qualitatively consistent with data obtained at 60 kV cm⁻¹. The highest E-induced lattice strain was $\sim 0.64\%$ at 150 kV cm⁻¹ for BF-BT-0.01NLN.

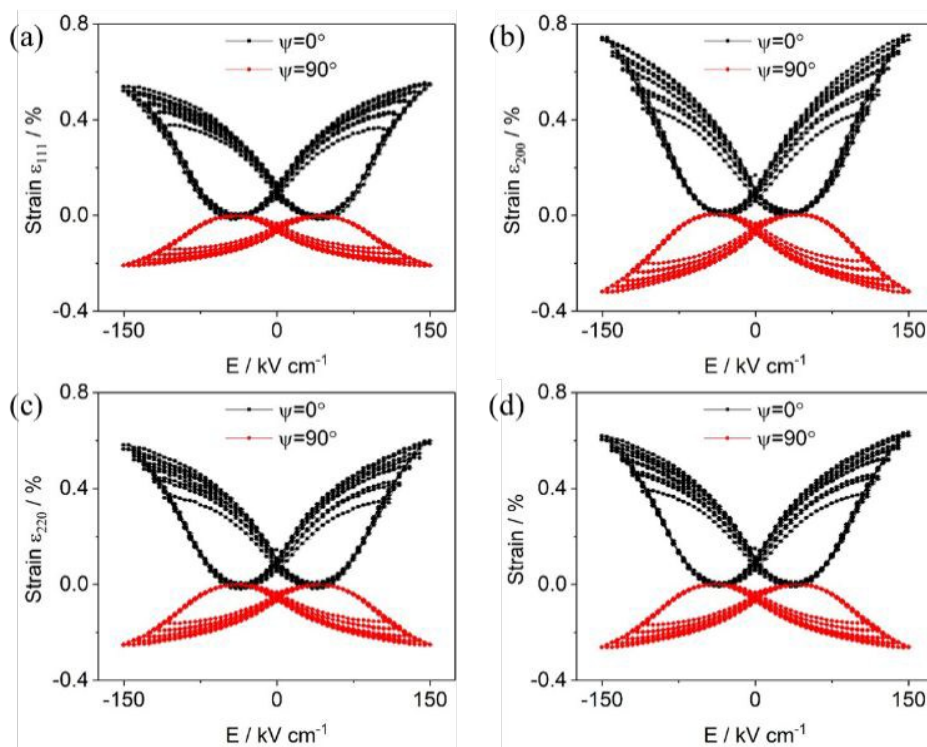


Figure 9. Effective lattice strains calculated from single peak profiles of (a) {111}_p (b) {200}_p, (c) {220}_p peaks and (d) The E-induced lattice strain of BF-0.3BT-0.01NLN up to 150 kV cm⁻¹ at $\beta = 0$ and 90° .

Field induced structural model

View Article Online
DOI: 10.1039/C9TA07904A

For lead-based [30-37] and lead-free piezoceramics, [4-8, 16-18, 38-55] dopants are often used to induce a relaxor state which, under an applied electric field undergoes an irreversible or reversible transformation into a metastable FE phase [56]. For example, an irreversible phase transition from RFE cubic to metastable FE rhombohedral/tetragonal phase can be induced in NBT-based materials which subsequently exhibit FE behaviour after removing the external electric field. [57-60] It is evident from the *in-situ* data presented here that the BF-BT based compositions investigated during the present study do not follow this general trend and no long-range FE state is induced during or after application of the applied electric field.

Previous authors have suggested that the stability of the initial RFE cubic state may be attributed to insufficient field to induce a long-range FE state but here electric fields with amplitude up to 150 kV cm^{-1} have been applied to the NLN-doped BF-BT ceramics without the appearance of peak broadening, narrowing or splitting. It is evident therefore that these BF-BT solid solutions are more resistant towards E-induced structural transitions to a long-range FE state than typical lead-based and lead-free relaxor compositions. Nonetheless, extremely large strains are achieved. These two contradictory data points (no field induced transition/large strain) can only be explained by considering that the BF-BT compositions undergo significant local distortions that do not propagate through the lattice within a single symmetry but whose polarisation vectors approximately align in the direction of the applied field. We note that in compositions with $x = 0.01$, unlike undoped compositions, no cyclic broadening is observed under the action of applied electric field, indicating the absence of significant nano- to mesoscale domain growth.

Disruption of long-range order is primarily attributed to the large difference in ionic radius between Ba^{2+} and Bi^{3+} ions, further enhanced by a third perovskite component in the solid solution ($\text{Nd}(\text{Li}_{1/2}\text{Nb}_{1/2})\text{O}_3$). The strain anisotropy of the diffraction peaks ($\epsilon_{200} > \epsilon_{220} > \epsilon_{111}$), particularly evident at 150 kV cm^{-1} , lends credence to this structural model, suggesting there are multiple nanodomain symmetries within a nominally pseudocubic lattice which distort approximately in the direction of the applied field but in different crystallographic directions and with different magnitudes. We note however, that a tetragonal phase appears dominant as the 200 peak shows the largest shift. Figure 10 is a schematic which illustrates how pseudosymmetry even at large applied fields is maintained within a grain. For simplicity, the schematic is restricted to rhombohedral, orthorhombic and tetragonal symmetries but the symmetry will be dictated by the local chemistry and the direction of the applied field with respect to the grain orientation.

Strain anisotropy of $\epsilon_{200} > \epsilon_{211} > \epsilon_{220} > \epsilon_{111}$ has previously been observed in $\text{BF-K}_{0.5}\text{Bi}_{0.5}\text{TiO}_3\text{-PbTiO}_3$ and attributed to the existence of local tetragonal polar nano-regions. [19] Similar distributions of A-site cation radii exist in $\text{BF-K}_{0.5}\text{Bi}_{0.5}\text{TiO}_3\text{-PbTiO}_3$ ($r_K = 1.64 \text{ \AA}$ and $r_{\text{Pb}} = 1.49 \text{ \AA}$) to those in BF-BT along with mixed ionic and covalent bonding.[29] Moreover, Levin, Reaney and co-workers [61] propose that such mixtures form an ideal environment for the creation of an 'active' solid solution, further adding that such effects could be enhanced by the substitution of large B-site ions Mg^{2+} ($r_{\text{Mg}} = 0.72 \text{ \AA}$) and Sc^{3+} ($r_{\text{Sc}} = 0.745 \text{ \AA}$) on the B-site.[29] We note that preliminary *in-situ* studies of high electrostrain BiScO_3 and $\text{BiMg}_{2/3}\text{Nb}_{1/3}\text{O}_3$ doped BF-BT, first presented by Murakami et al [6, 8], reveal that no long-range FE phase is induced, while the strain anisotropy is similar to that of NLN-doped compositions. (Figure S7 and S8, Supplementary information) Here, the *in-situ* poling experiments coupled with simple

crystallochemical arguments provide a compelling case for our proposed E-induced pseudosymmetric structure model. New Article Online
DOI: 10.1039/C9TA07904A

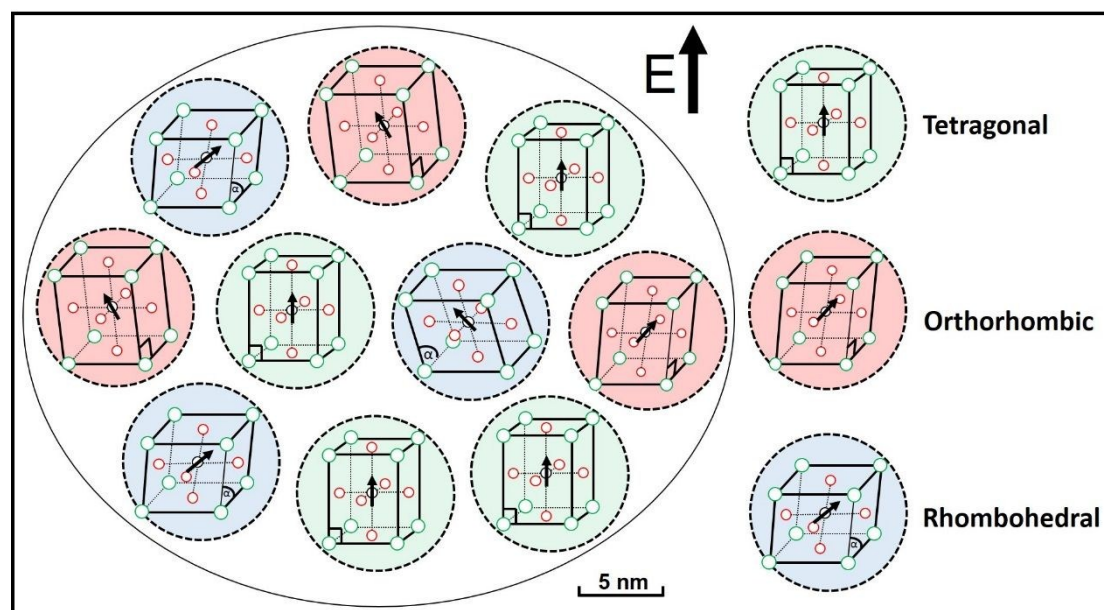


Figure 10. A schematic illustration explaining the formation of a high strain E-induced pseudosymmetric state. Local distorted regions are shown as, but are not limited to, rhombohedral, tetragonal and orthorhombic symmetries.

Conclusions

A phase transition from a mixed-phase FE (rhombohedral) and RFE (cubic) to single RFE (cubic) occurs in BF-BT-xNLN as x increases, as evidenced by changes in Rietveld refinement data, P-E, S-E, LCR permittivity and domain morphology. *In-situ* XRD revealed that, even at 150 kV cm⁻¹, BF-BT-NLN does not exhibit a transition to a long-range ordered FE state despite the large strains recorded for this system. Instead, an E-induced pseudosymmetric model is proposed in which local regions distort approximately in the direction of the applied field but adopt a range of symmetries, dictated by the local composition and the orientation of the grain with respect to the applied field. This model not only explains the large strains in these highly active solid solutions but also the strain anisotropy ($\epsilon_{200} > \epsilon_{220} > \epsilon_{111}$). It is proposed that the formation of an active pseudosymmetric solid solution in BF-BT ceramics with high electrostrain follows precepts proposed by Levin, Reaney and co-workers [61] in which large ionically bonded A-site ions (Ba²⁺) disrupt displacements of the smaller covalently bonded Bi-ions. Identical behaviour is observed in BiScO₃ and BiMg_{2/3}Nb_{1/3}O₃ doped BF-BT ceramics previously which exhibit electrostrain > 0.4%, suggesting that this is a general phenomenon that applies to many perovskite structured relaxors with a large spread of ionic radii on the A- and B-sites.

Acknowledgements:

We thank the EPSRC for funding (Substitution and Sustainability in Functional Materials and Devices, EP/L017563/1 and Synthesizing 3D Metamaterials for RF, Microwave and THz Applications, EP/N010493/1) and Diamond Light Source for access to beamline I15 (proposal

number EE19590-1) that contributed to the results presented here. Additionally, we thank Tim. P. Comyn (Ionix Advanced Technologies) for assistance with sample preparation. JJJ acknowledges the U.S. National Science Foundation award number DMR-1409399.

[View Article Online](#)

DOI: 10.1039/C9TA07904A

References

1. G. Catalan and J. F. Scott, *Adv. Mater.*, 2009, **21**, 2463.
2. J. Rödel, W. Jo, K. T. P. Seifert, E-M. Anton, T. Granzow and D. Damjanovic, *J. Am. Ceram. Soc.*, 2009, **92**, 1153.
3. D. Wang, G. Wang, S. Murakami, Z. Fan, A. Feteira, D. Zhou, S. Sun, Q. Zhao and I. M. Reaney, *J. Adv. Dielectr.*, 2018, **8**, 1830004.
4. D. Wang, Z. Fan, D. Zhou, A. Khesro, S. Murakami, A. Feteira, Q. Zhao, X. Tan and I. M. Reaney, *J. Mater. Chem., A*, 2018, **6**, 4133.
5. D. Wang, Z. Fan, W. Li, D. Zhou, A. Feteira, G. Wang, S. Murakami, S. Sun, Q. Zhao, X. Tan and I. M. Reaney, *ACS Appl. Energy Mater.*, 2018, **1**, 4403.
6. S. Murakami, N. T. A. F. Ahmed, D. Wang, A. Feteira, D. C. Sinclair and I. M. Reaney, *J. Eur. Ceram. Soc.*, 2018, **38**, 4220.
7. W. Gao, J. Lv and X. Lou, *J. Am. Ceram. Soc.*, 2018, **101**, 3383.
8. S. Murakami, D. Wang, A. Mostaed, A. Khesro, A. Feteira, D. C. Sinclair, Z. Fan, X. Tan and I. M. Reaney, *J. Am. Ceram. Soc.*, 2018, **101**, 5428.
9. S. O. Leontsev and R. E. Eitel, *J. Mater. Sci.*, 2011, **26**, 9.
10. S. Kim, G. P. Khanal, H-W. Nam, M. Kim, I. Fujii, S. Ueno, C. Moriyoshi, Y. Kuroiwa and S. Wasa, *J. Cera. Soc. Jpn.*, 2018, **126**, 316.
11. I. Fujii, R. Lizuka, Y. Nakahira, Y. Sunada, S. Ueno, K. Nakashima, E. Magome, C. Moriyoshi, Y. Kuroiwa and S. Wada, *Appl. Phys. Lett.*, 2016, **108**, 172903.
12. I. Calisir, A. A. Amirov, A. K. Kleppe and D. A. Hall, *J. Mater. Chem. A.*, 2018, **6**, 5378.
13. J. Filik, A.W. Ashton, P.C.Y. Chang, P.A. Chater, S.J. Day, M. Drakopoulos, M.W. Gerring, M.L. Hart, O.V. Magdysyuk, S. Michalik, A. Smith, C.C. Tang, N.J. Terrill, M.T. Wharmby and H. Wilhelm, *J. Appl. Crystallogr.*, 2017, **50**, 959.
14. Diffrac Plus TOPAS v. 3.0 (Manual), BRUKER AXS GmbH, Karlsruhe, 2006.
15. L. Daniel, D. A. Hall, J. Koruza, K. G. Webber, A. King and P. J. Withers, *J. Appl. Phys.*, 2015, **117**, 174104.
16. D. Wang, A. Khesro, S. Murakami, A. Feteira, Q. Zhao and I. M. Reaney, *J. Eur. Ceram., Soc.* 2017, **37**, 1857.
17. I. Calisir and D. A. Hall, *J. Mater. Chem. C.*, 2018, **6**, 134.
18. G. Wang, J. Li, X. Zhang, Z. Fan, F. Yang, A. Feteira, D. Zhou, D. C. Sinclair, T. ma, X. Tan, D. Wang and I. M. Reaney, *Energy Environ. Sci.*, 2019, **12**, 582.
19. Y. Li, Z. Zhang, Y. Chen and D. A. Hall, *Acta Mater.*, 2019, **160**, 199.
20. Y. Li, Y. Chen, Z. Zhang, A. Kleppe and D. A. Hall, *Acta Mater.*, 2019, **168**, 411.
21. J. L. Jones, E. B. Samovich and K. J. Bowman, *J. Appl. Phys.*, 2005, **97**, 034113.

22. D. A. Hall, T. Mori, P. J. Withers, H. Kungl, M. J. Hoffmann and J. Wright, *Mater. Sci. Technol.*, 2008, **24**, 927.
23. D. A. Hall, A. Steuwer, B. Cherdhirunkorn, T. Mori and P. J. Withers, *Acta Mater.*, 2006, **54**, 3075.
24. D. A. Hall, S. Steuwer, B. Cherdhirunkorn, P. J. Withers and T. Mori, *Mater. Sci. Eng. A.*, 2005, **409**, 206.
25. D. A. Hall, A. Steuwer, B. Cherdhirunkorn, T. Mori and P. J. Withers, *J. Appl. Phys.*, 2004, **96**, 4245.
26. M.C. Ehmke, N.H. Khansur, J.E. Daniels, J.E. Blendell and K.J. Bowman, *Acta Mater.*, 2014, **66**, 340.
27. M.R. Daymond, *J. Appl. Phys.*, 2004, **96**, 4263.
28. J. E. Daniels and T. R. Finlayson, *J. Appl. Phys.*, 2007, **101**, 094104.
29. R. D. Shannon, *Acta Cryst.*, 1976, **A32**, 751.
30. B. Narayan, J. S. Malhotra, R. Pandey, K. Yaddanapudi, P. Nukala, B. Dkhil, A. Senyshyn and R. Ranjan, *Nature*, 2018, **17**, 427.
31. D. Wang, M. Cao and S. Zhang, *Phys. Status Solidi RRL*, 2012, **6**, 135.
32. D. Wang, M. Cao and S. Zhang, *J. Am. Ceram. Soc.*, 2011, **94**, 3690.
33. Y. Li, D. Wang, W. Cao, B. Li, J. Yuan, D. Zhang, S. Zhang and M. Cao, *Ceram. Int.*, 2015, **41**, 9647.
34. Y. Li, J. Yuan, D. Wang, D. Zhang, H. Jin and M. Cao, *J. Am. Ceram. Soc.*, 2013, **96**, 3440.
35. D. Wang, M. Cao and S. Zhang, *J. Am. Ceram. Soc.*, 2012, **95**, 3220.
36. D. Wang, M. Cao and S. Zhang, *J. Eur. Ceram. Soc.*, 2012, **32**, 441.
37. D. Wang, M. Cao and S. Zhang, *J. Eur. Ceram. Soc.*, 2012, **32**, 433.
38. A. Khesro, D. Wang, F. Hussain, D.C. Sinclair, A. Feteira and I.M. Reaney, *Appl. Phys. Lett.*, 2016, **109**, 142907.
39. A. Zeb, D. A. Hall, Z. Aslam, J. Forrester, J. F. Li, Y. Li, C. C. Tang, G. Wang, F. Zhu and S. J. Milne, *Acta Mater.*, 2019, **168**, 100.
40. J. Hao, B. Shen, J. Zhai, C. Liu, X. Li and X. Gao, *J. Appl. Phys.*, 2013, **113**, 114106.
41. W. Jo, T. Granzow, E. Aulbach, J. Rodel and D. Damjanovic, *J. Appl. Phys.*, 2009, **105**, 094102.
42. J. Yao, W. Ge, L. Yan, W. T. Reynolds, J. Li, D. Viehland, D. A. Kiselev, A. L. Kholkin, Q. Zhang and H. Luo, *J. Appl. Phys.*, 2012, **111**, 064109.
43. D. Maurya, A. Pramanick, K. An and S. Priya, *Appl. Phys. Lett.*, 2012, **100**, 172906.
44. W. Jo, J. Daniels, D. Damjanovic, W. Kleemann and J. Rodel, *Appl. Phys. Lett.*, 2013, **102**, 192903.

View Article Online

DOI: 10.1039/C9TA07904A

45. D. Maurya, A. Pramanick, M. Feygenson, J. C. Neufeind, R. J. Bodnar and S. Priya, *J. Mater. Chem. C.*, 2014, **2**, 8423.
46. Z. Fan, C. Zhou, X. Ren and X. Tan, *Appl. Phys. Lett.*, 2017, **111**, 252902.
47. Z. Fan, J. Koruza, J. Rodel and X. Tan, *Acta. Mater.*, 2018, **151**, 253.
48. Z. Fan and X. Tan, *J. Eur. Ceram. Soc.*, 2018, **38**, 3472.
49. Z. Fan and X. Tan, *Appl. Phys. Lett.*, 2019, **114**, 212901.
50. W. Li, Z. Xu, R. Chu, P. Fu and G. Zang, *J. Am. Ceram. Soc.*, 2010, **93**, 2942.
51. W. Li, Z. Xu, R. Chu, P. Fu and G. Zang, *Mater. Lett.*, 2010, **64**, 2325.
52. W. Li, Z. Xu, R. Chu, P. Fu and G. Zang, *Physica B.*, 2010, **405**, 4513.
53. J. Yin, G. Liu, X. Lv, Y. Zhang, C. Zhao, B. Wu, X. Zhang and J. Wu, *J. Mater. Chem. A.*, 2019, **7**, 5391.
54. J. Yin, G. Liu, C. Zhao, Y. Huang, Z. Li, X. Zhang, K. Wang and J. Wu, *J. Mater. Chem. A.*, 2019, **7**, 13658.
55. C. Zhao, B. Wu, K. Wang, J-F. Li, D. Xiao, J. Zhu and J. Wu, *J. Mater. Chem. A.*, 2018, **6**, 23736.
56. Dittmer R. PhD thesis. University of Darmstadt, 2013.
57. G. Wang, D. A. Hall, T. P. Comyn, L. Daniel and A. K. Kleppe, *J. Adv. Appl. Ceram.*, 2016, **115**, 89.
58. G. Wang, D. A. Hall, Y. Li, C. A. Murray and C. C. Tang, *J. Eur. Ceram. Soc.*, 2016, **36**, 4015.
59. G. Wang, Y. Li, C. A. Murray, C. C. Tang and D. A. Hall, *J. Am. Ceram. Soc.*, 2017, **100**, 3293.
60. G. Wang, Z. Lu, Z. Zhang, A. Feteira, C. C. Tang and D. A. Hall, *J. Am. Ceram. Soc.*, 2019, **00**, 1-9.
61. I. Levin, W. J. Laws, D. Wang and I. M. Reaney, *Appl. Phys. Lett.*, 2017, **111**, 212902.