

**AGENT MAKERS - The un-masking of environmental agency through design for speculative social innovation.**

LEVICK-PARKIN, Melanie <<http://orcid.org/0000-0003-3925-9792>>, STIRLING, Eve <<http://orcid.org/0000-0001-8989-4984>>, HANSON, Maria <<http://orcid.org/0000-0002-6986-7441>> and BATEMAN, Roger <<http://orcid.org/0000-0002-3086-6273>>

Available from Sheffield Hallam University Research Archive (SHURA) at:

<https://shura.shu.ac.uk/17211/>

---

This document is the Presentation

**Citation:**

LEVICK-PARKIN, Melanie, STIRLING, Eve, HANSON, Maria and BATEMAN, Roger (2017). AGENT MAKERS - The un-masking of environmental agency through design for speculative social innovation. In: Making and Unmaking the Environment : Design History Society Annual Conference, University of Oslo, 7–9 September 2017. (Unpublished) [Conference or Workshop Item]

---

**Copyright and re-use policy**

See <http://shura.shu.ac.uk/information.html>

Design History Society Conference 2017 Oslo  
Making and unmaking the environment

# AGENT MAKERS – The un-masking of environmental agency through design for speculative social innovation.

Melanie Levick-Parkin, Eve Stirling, Maria Hanson & Roger Bateman

Sheffield Institute of Arts  
Sheffield Hallam University

[m.levick-parkin@shu.ac.uk](mailto:m.levick-parkin@shu.ac.uk)





## Speculative & Critical Design

Speculative (often future focused) design allow us to suspend disbelief about change while at the same time open up space for discussion (Dunne and Raby, 2013) through the use of critical design objects which may not have a functional or commercial use.

## Agency

Having the power to shape your life experiences. You can contribute to them and are not just shaped by them (Bandura, 2001).













## **BRIEF**

### **Design for (speculative) Social Innovation: Design Futuring the City**

**Module Task** – Create a designed outcome that surfaces a particular issue in relation to design for (speculative) social innovation.

For this brief you will need to identify **one** issue/prediction, which may potentially affect your home city in time to come. (at least 50 years into the future) and come up with a designed outcome which attends to this prediction in some way.

**Background:** There are many predictions and forecasts out there about issues that will impact on how we will be living in the future. No-body knows exactly which ones will turn out to be true, but as designers we have the ability to imagine the future and put our skills and material knowledge towards/or against creating particular futures.





**What matters?**



# process

4 tutors

1 exhibition

48 project reports

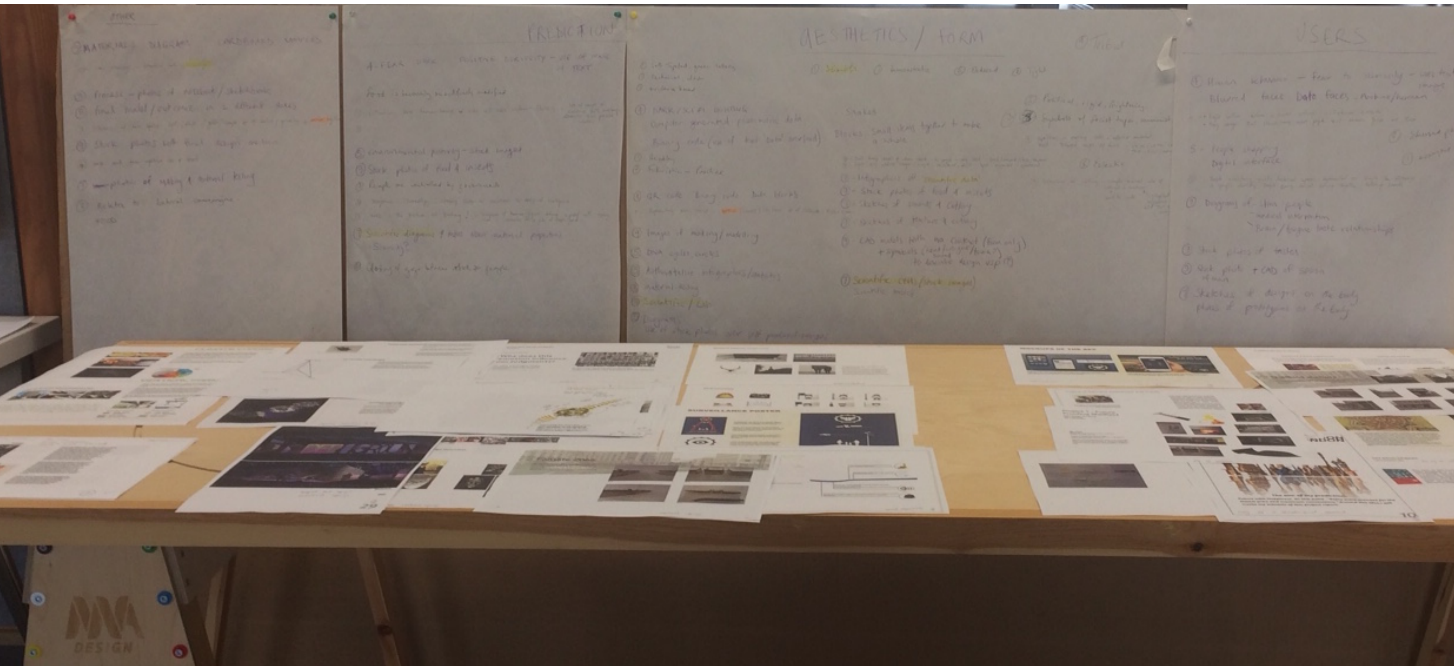
10 projects chosen for a close reading (from HM or D level)

16 digital questionnaire responses

5 student interviews (1 tutor)

1 visual analysis day for 3 tutors (all 3D/makers)

Further analysis by 1 tutor



# Student exhibition

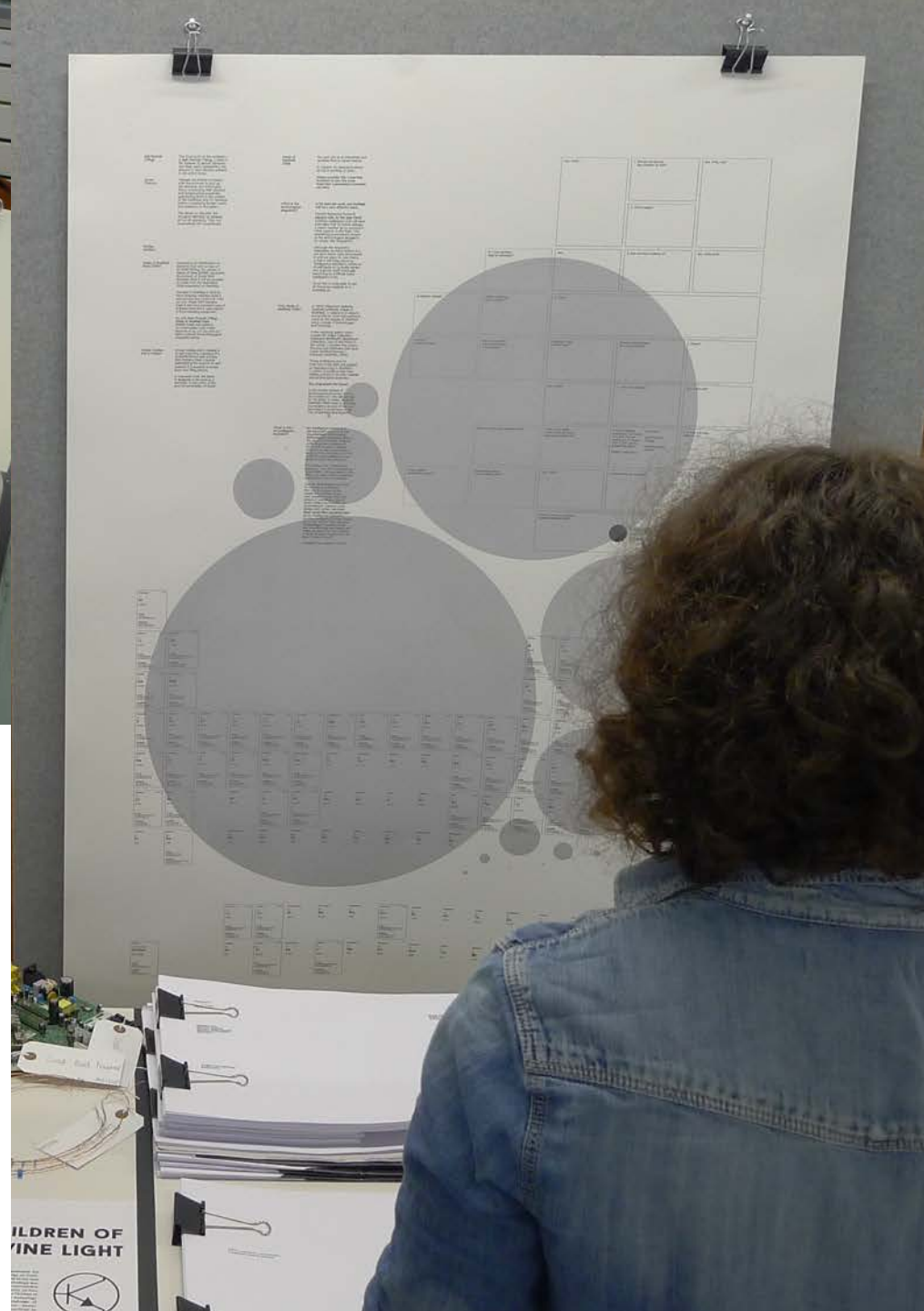
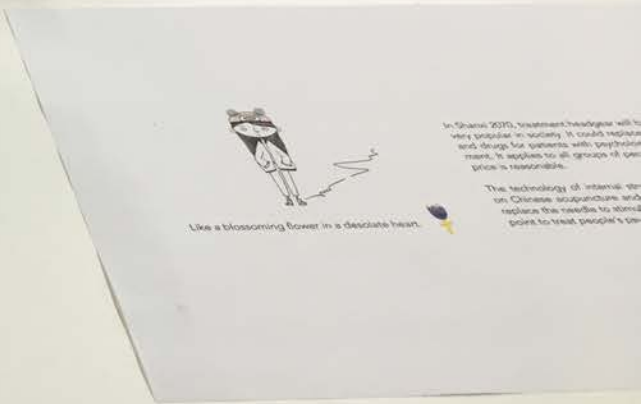
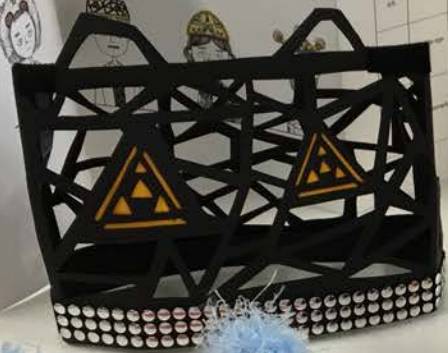




Illustration - Project  
 Research & Dev  
 Tingting Nang  
 2601775

Number	User	Material	Element	Color	Texture	Shape	Size
1	Blue	Card base suitable for any medium-sized illustration	Yellow background	Yellow	Yellow	Yellow	Yellow
20	Orange paper	Hand-drawn characters	Hand-drawn characters	Orange	Orange	Orange	Orange
40	Orange paper	Hand-drawn characters	Hand-drawn characters	Orange	Orange	Orange	Orange
	Orange paper	Hand-drawn characters	Hand-drawn characters	Orange	Orange	Orange	Orange
	Orange paper	Hand-drawn characters	Hand-drawn characters	Orange	Orange	Orange	Orange







**Project Desi**  
Xinshuo Chen  
55020498

**Social Dreaming**

Social Dreaming is a collaborative creative and participatory dreaming process which uses combinations of a building, an art piece or sculpture. They can be used in a variety of ways, from being a simple and direct way to explore a specific issue, to a more complex and layered way to explore a specific issue. It is a process of collective dreaming that is designed to be used in a variety of ways, from being a simple and direct way to explore a specific issue, to a more complex and layered way to explore a specific issue.

The social dreaming process is a collaborative and participatory process that uses combinations of a building, an art piece or sculpture. They can be used in a variety of ways, from being a simple and direct way to explore a specific issue, to a more complex and layered way to explore a specific issue. It is a process of collective dreaming that is designed to be used in a variety of ways, from being a simple and direct way to explore a specific issue, to a more complex and layered way to explore a specific issue.

If you're interested in social dreaming, you can find more information on the Project Desi website. We're always looking for new people to join our team and we're always looking for new ways to explore social dreaming. We're always looking for new ways to explore social dreaming.

Armeda Park, UK

# Kitchen in Yemen in 2050

A prediction for kitchen in  
future

The future of capsules that will take over food!  
How social life will be,  
if there will be no  
kitchen?



Image 1: A Yemeni Woman  
(C. Alshabhi, 2014)

By: Henda Abdulmawla  
MA Interior Design  
Project 1



Name: Henda Abdulmawla  
MA Design (Interior)  
Project 1  
Kitchen in 2050 in Old Sana'a City

In 2050 there will be no food as tablets and capsules will take  
the place of food. The only thing we do every day is eating food; if there will be no food, how  
will we survive?

This kitchen is designed to protect the social life in 2050  
and to maintain the link between Yemeni traditional community values and  
modern food.





**The future city as . . .**

# an imagined future



Fig. 39 Future Skyscraper Anuar, 2016

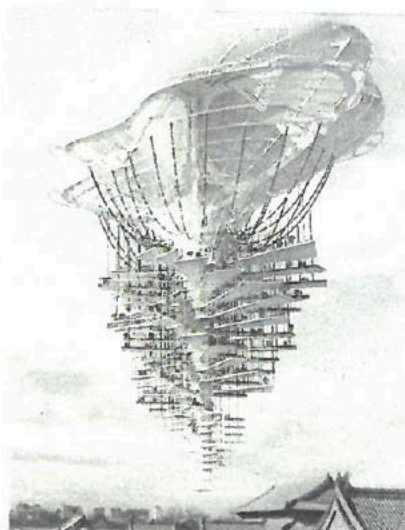


Fig. 41 Light park floating skyscraper retrieved from <http://www.evolo.us>



Fig. 40 Future Skyscraper Porada, 2013

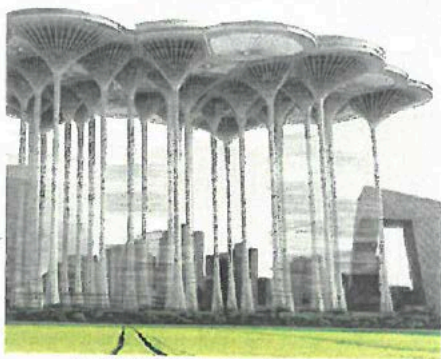


Fig. 42 Crater Scrapper, retrieved from <http://www.evolo.us/>



<https://openlab.citytech.cuny.edu>



<http://rhynides.marmode.us.edu>

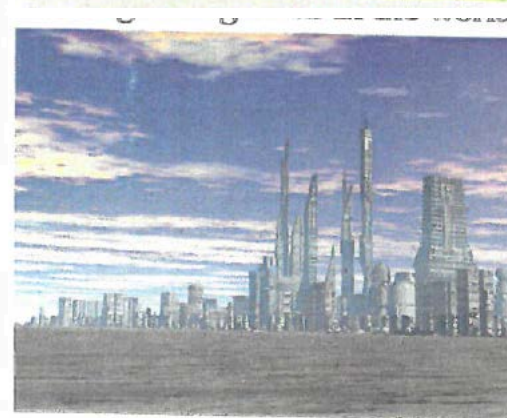


Figure 14





# national identity/ tradition

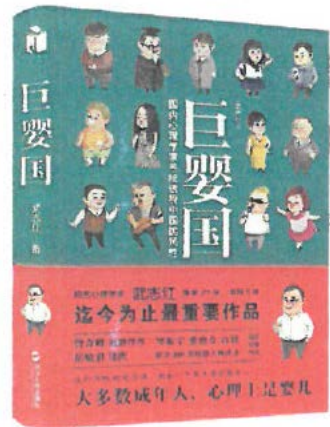


Figure 22



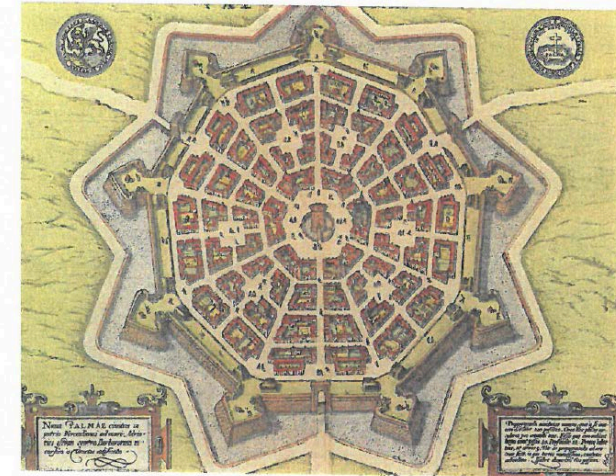
Figure 17-1. Gourd bottle.



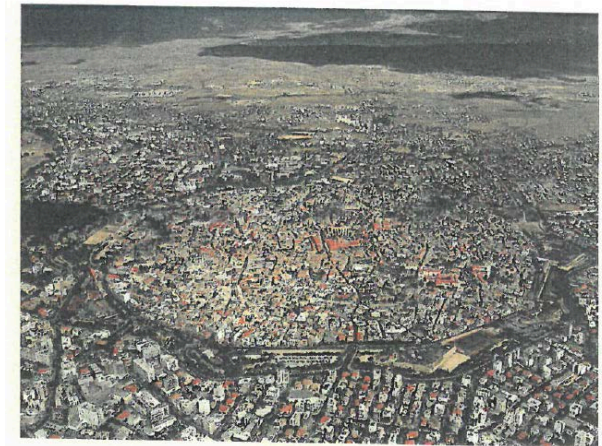
Figure 17-2. The shape of gourd bottle on hat.



Figure 17-3. Sketch of thinking.



(Fig.24 Venetian map of the walls of Nicosia, 1597)



(Fig.25 Aerial photo of Nicosia, n.d.)

# as product



Mock-up of the app including the main app icon, home screen layout, notification bar and app permission warning that illustrates how the app uses the phones microphone to monitor the subject

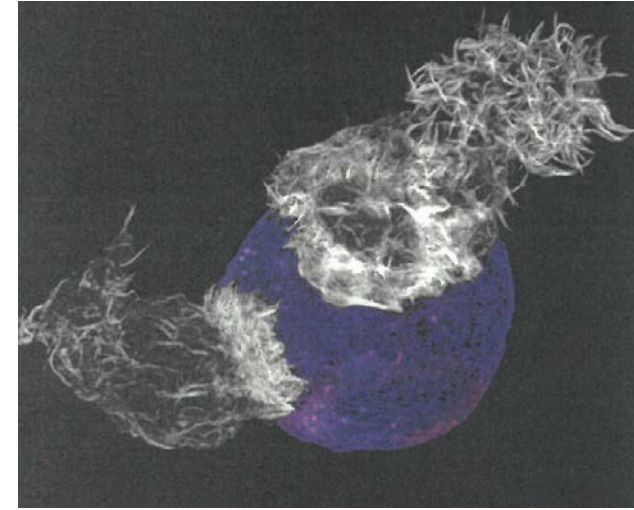
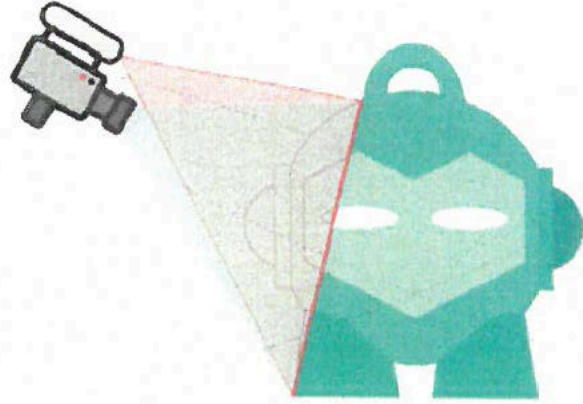
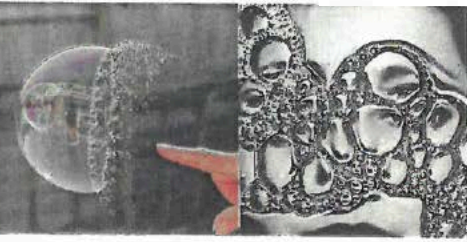
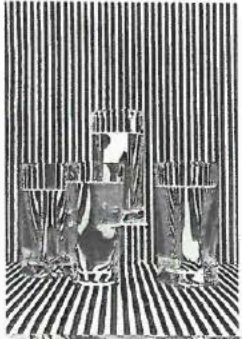


A advertisement mock-up poster that illustrates the ministry of information Advertising the censorship app under the guise that the app is in a way reducing the gap between government and people



# Agentic design

# performative agency



## Immortal packaging



<http://naturalofindone.blogspot.co.uk/>



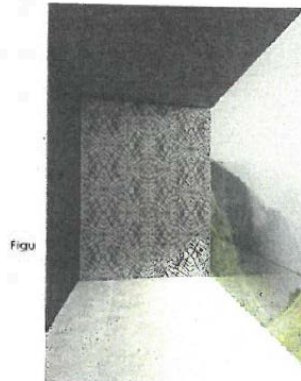
<http://www.industryweek.com/>



<http://www.johndaylegal.com/>



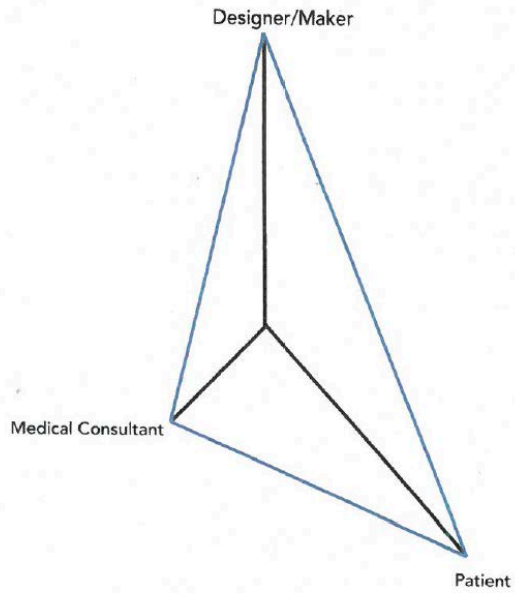
<http://ontimemovingservices.net/>



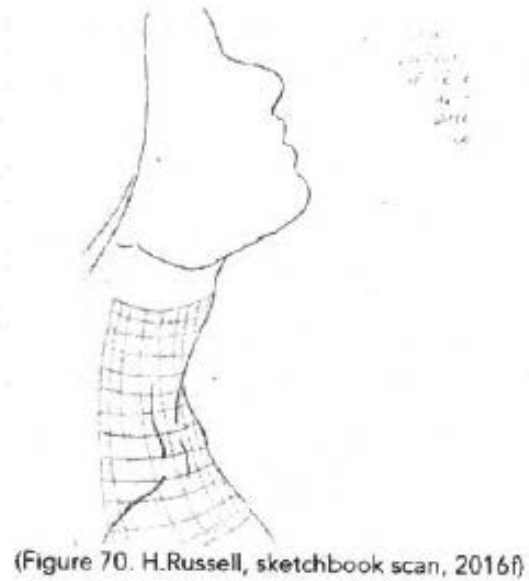
Figu



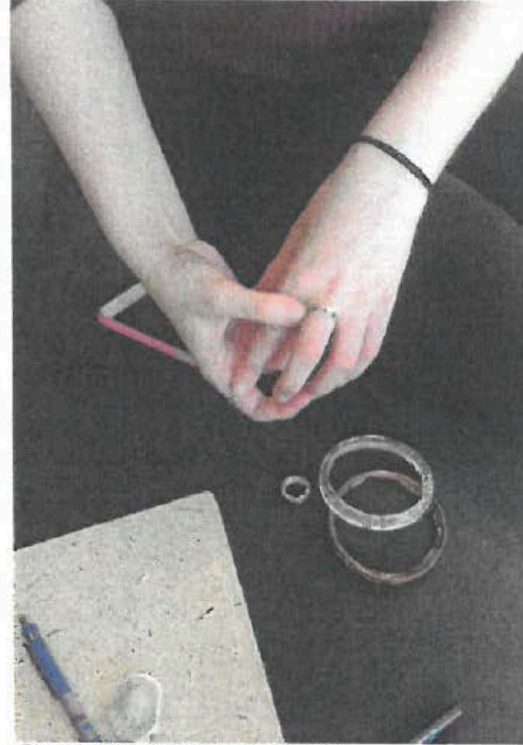
# creational agency



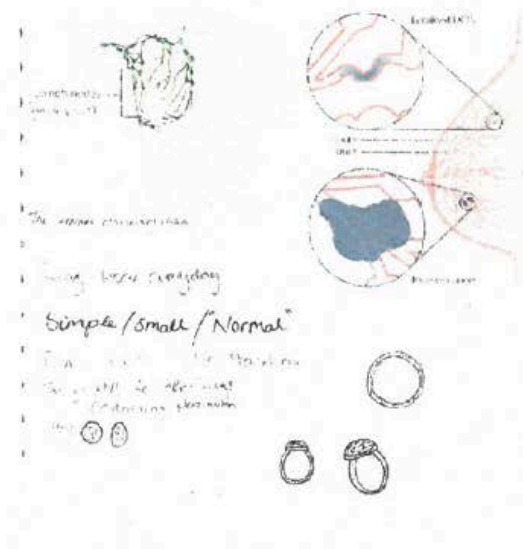
(Figure 104. H.Russell, Co-creative diagram, 2016)



(Figure 70. H.Russell, sketchbook scan, 2016f)



(Figure 86. H.Russell, consultation, 2016b)



(Figure 87. H.Russell, sketch book scan, 2016h)

## Your Remedial Treatment

Leah,  
Welcome to your own personalised Remedial Treatment.

Put on your ring to activate your treatment.

Your treatment has no known side effects. If you do have any concerns, problems or feel that this treatment is not for you, please do not hesitate to contact.

24/7 Interactive Call Number:

- Instructions
- To be worn 8 hours a day.
  - Take off at night and before showering.
  - Do not wear while swimming.
  - Check-ups are required every month for six months then every two months until your treatment is complete.
  - Bring your object to every check-up so it can be monitored.
  - Do not allow anyone to wear this bangle, it is personalised to your treatment and may cause nausea and vomiting.

Treatment Begins

WEDNESDAY 10TH NOVEMBER	WEDNESDAY 17TH NOVEMBER
TUESDAY 11TH JAN 2067	WEDNESDAY 9TH MARCH
TUESDAY 10TH MAY	WEDNESDAY 6TH JULY

Treatment Ends

(Figure 88. H.Russell, treatment leaflet, 2016b)

# remedial treatment

# human robot relationship

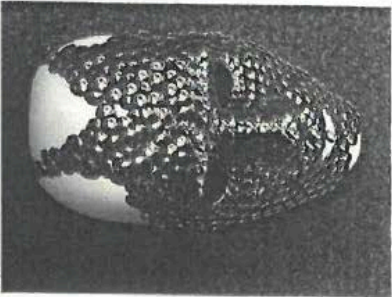
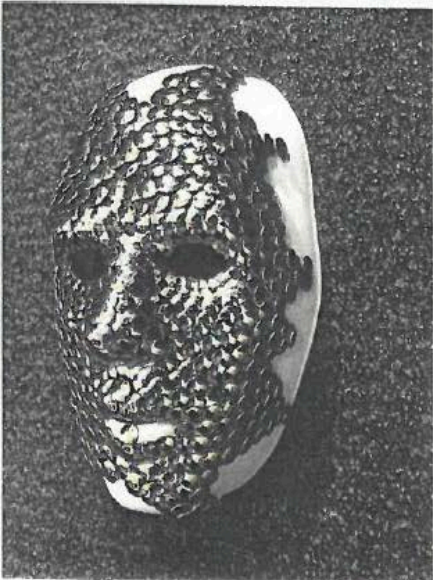
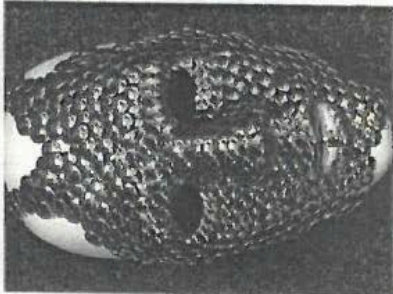
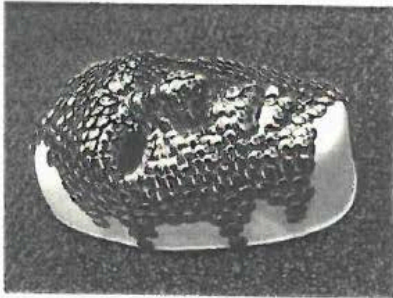


Figure 37

# sanctuaries

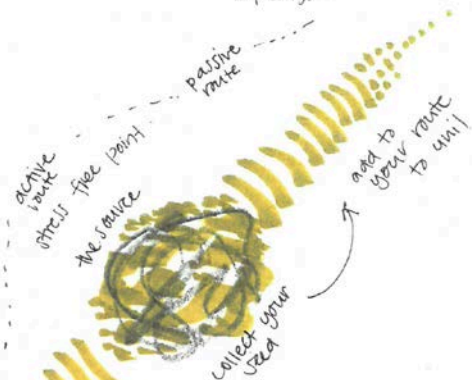
perspective

sensory aspects:  
noise reduction  
lavender scent  
calming music  
soft surfaces like moss, carpet  
day light

drinking water

indigenous plants

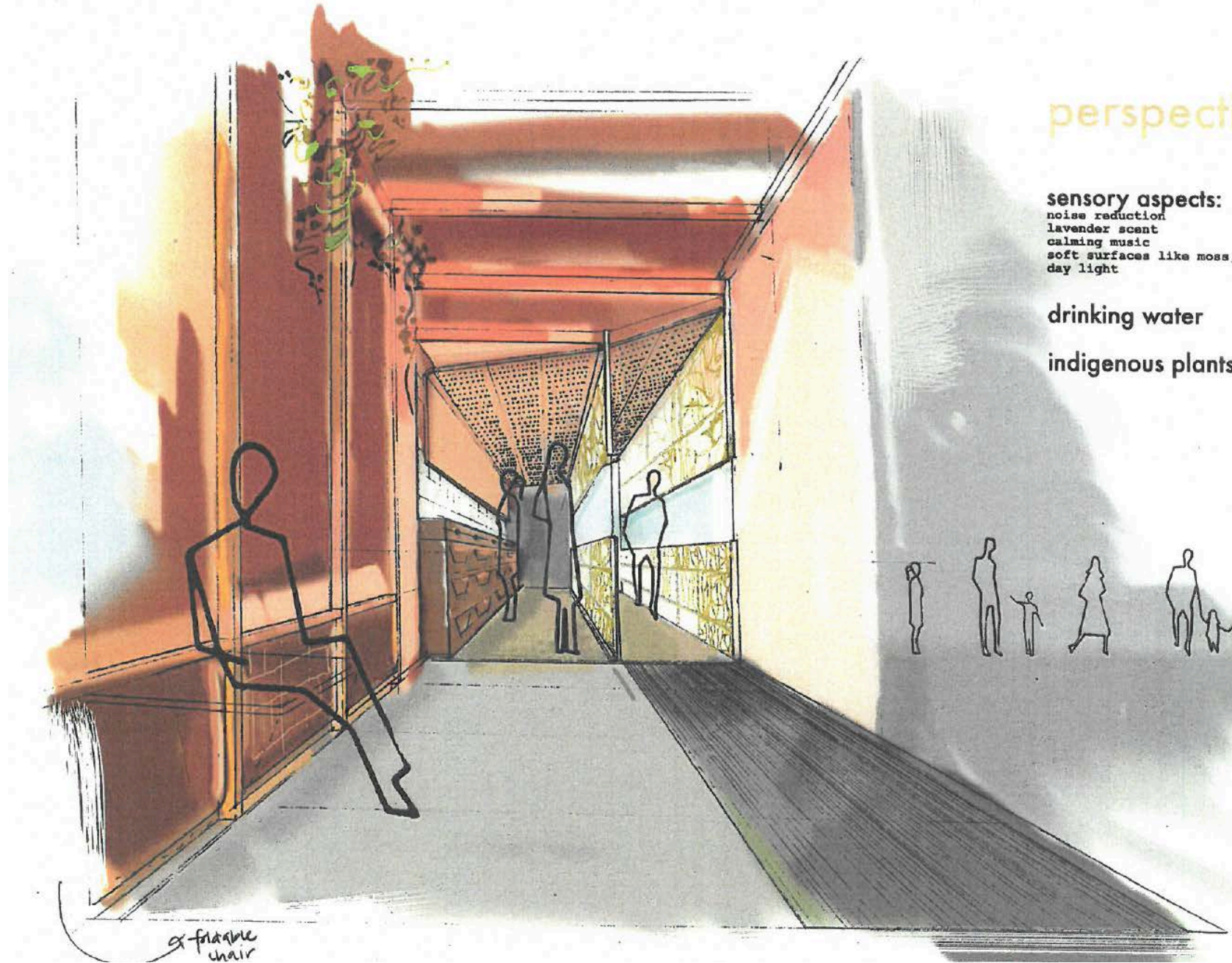
How to reduce stress levels  
when you are in a rush?  
/walking  
/going through  
a passage



## expanding the stress free points

stress free points can grow depending on users' preferences. the interior provides one of the indigenous plants english ivy seeds (hedera helix) to help make Sheffield greener.

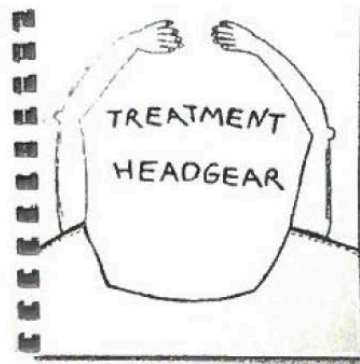
every student can help change their living environments in order to reduce their stress levels and walk through a greener route.



x-frame chair



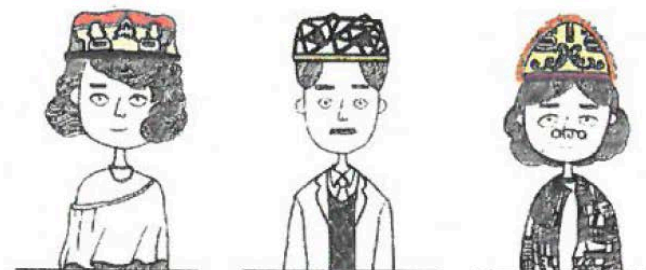
# social innovation through critical design



2

3

4

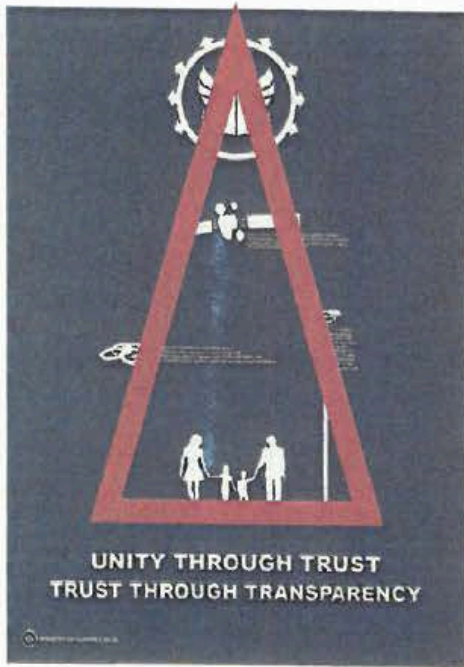


6

7

8

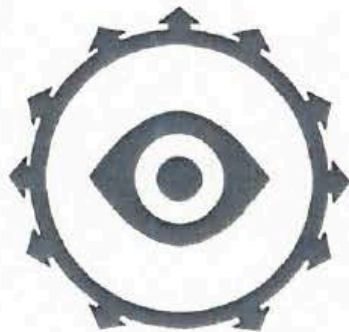
Number	User	Material	Element	Color Reference	Suitable Symptom	Remarks
1	Baby	Coral fleece (suitable for skin) Embroidery (decorating)	☺ = Wang Auspicious meaning	● ● ● ● ● ●	Sleeping alone Go out	It is comfortable and keep warm. Parents could not always be with them. Therefore the headgear can give baby a sense of security. It can appease emotions when they crying.
2/3	Teenage youths	Wool felt Elastic band (internal)	Traditional Chinese pattern. Auspicious meaning	● ● ● ● ● ● ● ● ● ● ● ●	Stay alone at home Fret mood	Some children in the period of growth and learning will produce impatient mood. It can appease emotions and make them relax.
4/5	Teenagers	Woolen yarn Wool felt Silverwork (decorating)	Extraction of traditional "tiger hats elements."	● ● ● ● ● ● ● ● ● ● ● ●	Depression Emotional ups and down Anxiety	Nowadays teenagers face pressure from many aspects. Such as learning, working, feelings, family and a series of unstable factors.
6/7	Middle-age	Air permeability	Geometry Chinese pattern	● ● ● ● ● ● ● ● ● ● ● ●	Depression When the mood is not stable (愁闷)	People can wear it at leisure time. To relax and reduce stress.
8/9	Elderly people	Wool felt Embroidery (decorating)	"Close eyes means" Composure life style	● ● ● ● ● ● ● ● ● ● ● ●	Feel lonely Stay alone	Because of children not stay with them together. Elderly people usually feel lonely. The treatment headgear could make them feel happy.



Illustrations set up in a triangular layout with the tip of it being the symbol of the authoritarian dystopian government

Items and illustrations are silhouetted vectors in order to look more generic to fit with the uniformity of a dystopia and the info-graphic style poster

The language of the poster is direct simple and authoritative laying under the layout triangle and on top of the agency issuing it



Label underneath with the seal and logo of my fictional ministry of technology it matches the official government issue poster and also the colours and ministry give a near medical agency look which is also linked to welfare



Small, illegible text block next to the satellite illustration.



Small, illegible text block next to the glasses illustration.



Small, illegible text block next to the surveillance camera illustration.



**UNITY THROUGH TRUST  
TRUST THROUGH TRANSPARENCY**

# Mental health

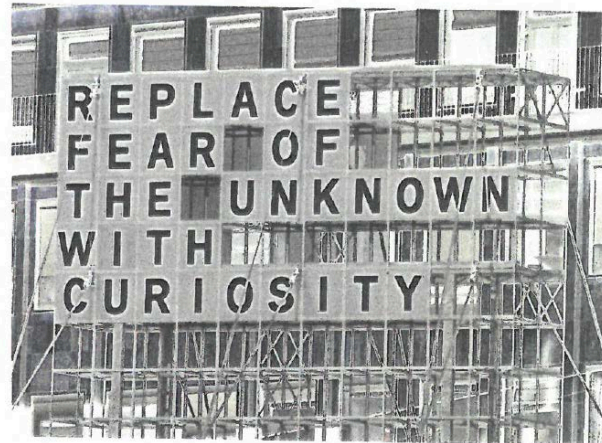


Figure 18

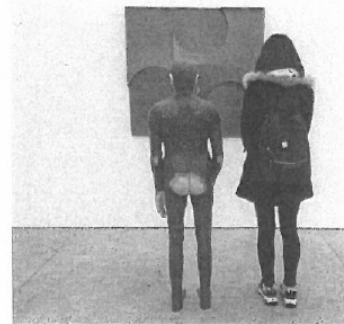
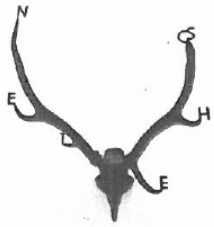
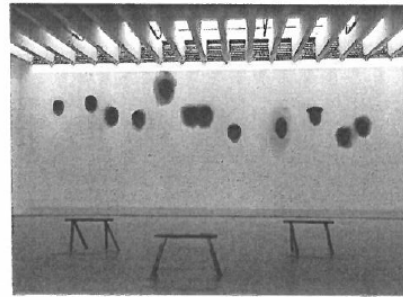
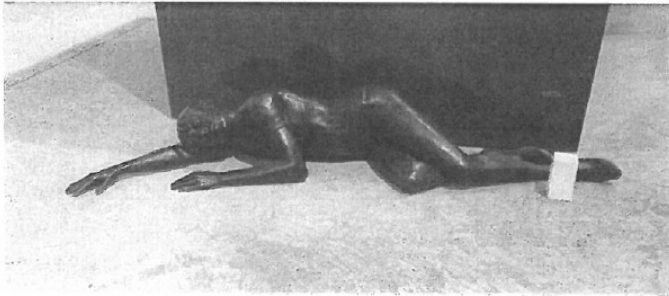
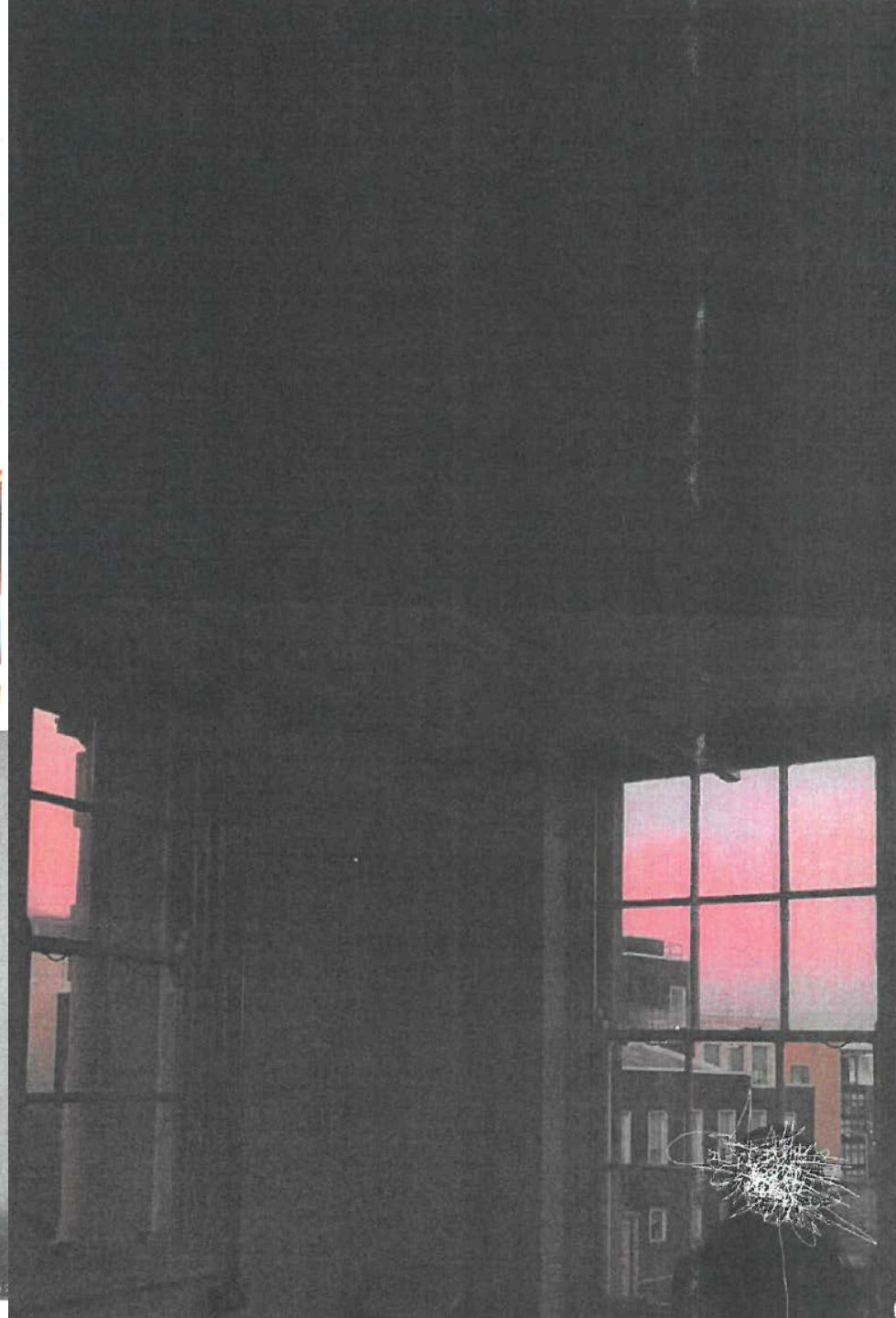


Figure 5



# Majority of students experience mental health issues, says NUS survey

The survey, released as MPs meet to discuss student mental health, also shows 54% don't seek help



## Blogging students / Eleven sketches inspired by the university mental health crisis - in pictures

The number of students dropping out from degree courses due to mental illness has increased significantly in recent years. Illustrator and student Ella Baron captures the experiences of 11 undergraduates



**Arachnophobia (and other concerns): A Study of Student Mental Health at the University of Richmond**  
 L Cabo, H Dunn, A Grimes, A Sampedro - 2017 - scholarship.richmond.edu  
 This Article is brought to you for free and open access by the SSIR 2017 at UR Scholarship Repository. It has been accepted for inclusion in SSIR Presentations 2017 by an authorized administrator of UR Scholarship Repository. For more information, please contact  
[All 2 versions](#) [Cite](#) [Save](#)

**Crying in My Office: The Current State of College Student Mental Health**  
 G Baldwin, B Holbrook, C Leak - 2016 - digitalcommons.winthrop.edu  
 ... and **university** retention, and how these concerns impact Winthrop **University**. Additionally, we will engage the audience in discussion regarding strategies to cope with this generation of college **student** as they present with more and more intense **mental health** concerns. ...  
[Cite](#) [Save](#) [More](#)

**Mindfulness as an alternative for supporting university student mental health: Cognitive-emotional and depressive self-criticism measures**  
 MA Azam, M Mongrain, K Vora... - International ..., 2016 - search.proquest.com  
 Abstract Increases in **university**-based **mental health** problems require alternative **mental health** programs, applicable to students with elevated psychological risks due to personality traits. This study examined the cognitive-emotional outcomes of a **university** mindfulness  
[Cited by 1](#) [Related articles](#) [All 16 versions](#) [Cite](#) [Save](#)

**College Student Mental Health and The JED Campus Program**  
 R Woods - 2017 - digitalcommons.kent.edu  
 ... Event Title. College **Student Mental Health** and The JED Campus Program. Presenter Information. Rylie Woods, Kent State **University** - Stark Campus. Location. 217 Science & Nursing Building. Start Date. 28-4-2017 2:15 PM. End Date. 28-4-2017 2:45 PM. Description. ...  
[Cite](#) [Save](#) [More](#)

**MENTAL HEALTH PROBLEMS IN COLLEGE FRESHMEN: PREVALENCE AND ACADEMIC FUNCTIONING**  
 R Bruffaerts, P Mortier, G Kiekens, RP Auerbach... - Journal of Affective ..., 2017 - Elsevier  
 ... Methods. As part of the World **Mental Health** Surveys International College **Student** project, 12-month **mental health** problems among freshmen (N=4,921) was assessed in an e-survey of students at KU Leuven **University** in Leuven, Belgium. ...  
[All 2 versions](#) [Cite](#) [Save](#)

# interface

The city as

an interface to student cultural background

an interface to student wellbeing

Performative agency

Creational Agency







**Speculative design inquiries in relation to social innovation are one way of making visible how we as designers are trapped by our own ontological constructedness.**

**We need to strive to de-design ourselves to be able to think of ‘futures yet unthought’ (Grosz 1999) and to**

**‘challenge the status quo by facilitating other types of encounters, conversations, and imaginaries, and giving voice to people, things, and animals otherwise marginalized...’  
(Kjearsgaard et al. 2016)**



