

Where Bombs Fell

EDGAR, Matthew <<http://orcid.org/0000-0003-2759-4542>>

Available from Sheffield Hallam University Research Archive (SHURA) at:

<https://shura.shu.ac.uk/15051/>

This document is the Presentation

Citation:

EDGAR, Matthew (2016). Where Bombs Fell. Sheffield, Matt Edgar. (Unpublished)
[Other]

Copyright and re-use policy

See <http://shura.shu.ac.uk/information.html>

where bombs fell





WHERE
BOMBS
FELL

where bombs fell

where bombs fell

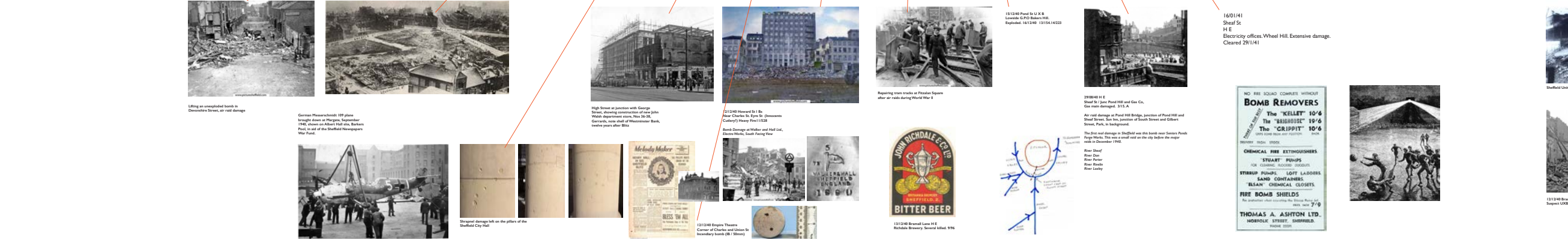
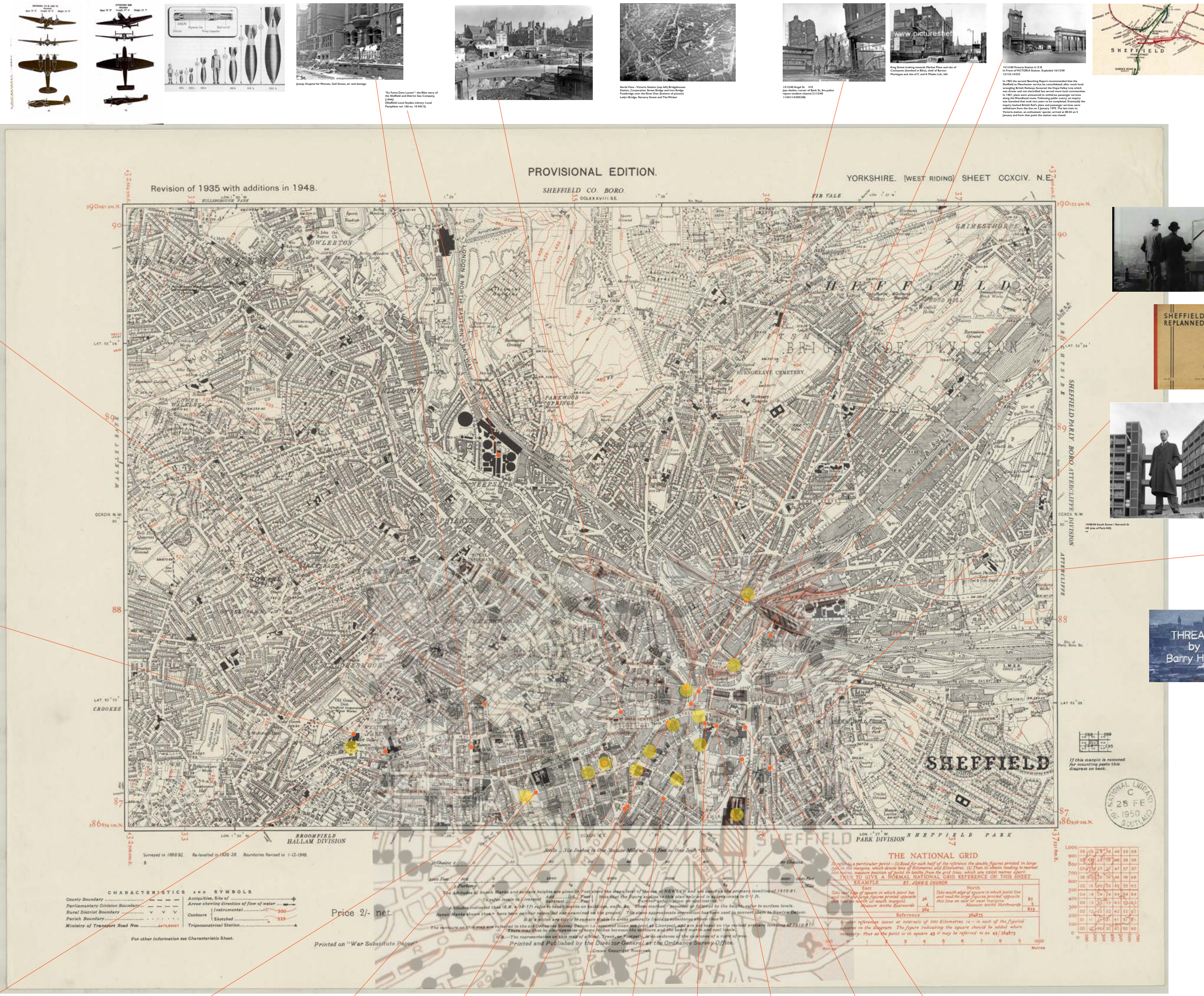
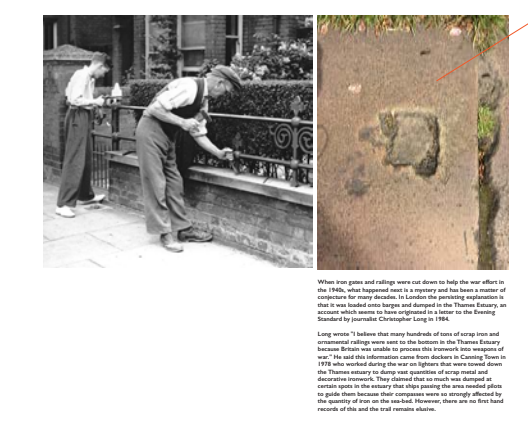
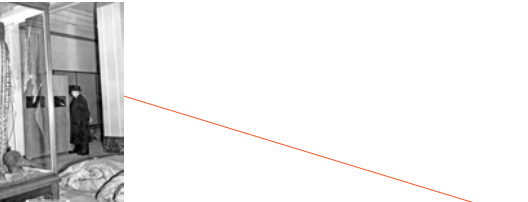
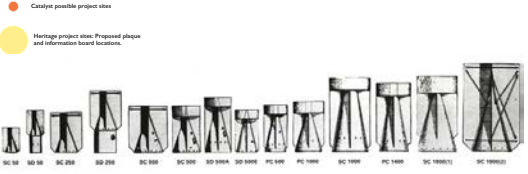


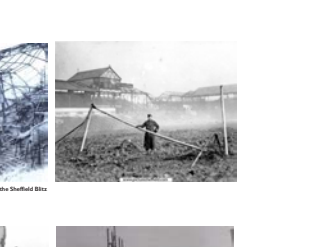
Table with 2 columns: Bomb Type and Location. The table lists various bomb types and their locations in Sheffield.

Bomb Type	Location
1. 100 lb. High Explosive Bomb	1. 100 lb. High Explosive Bomb
2. 100 lb. High Explosive Bomb	2. 100 lb. High Explosive Bomb
3. 100 lb. High Explosive Bomb	3. 100 lb. High Explosive Bomb
4. 100 lb. High Explosive Bomb	4. 100 lb. High Explosive Bomb
5. 100 lb. High Explosive Bomb	5. 100 lb. High Explosive Bomb
6. 100 lb. High Explosive Bomb	6. 100 lb. High Explosive Bomb
7. 100 lb. High Explosive Bomb	7. 100 lb. High Explosive Bomb
8. 100 lb. High Explosive Bomb	8. 100 lb. High Explosive Bomb
9. 100 lb. High Explosive Bomb	9. 100 lb. High Explosive Bomb
10. 100 lb. High Explosive Bomb	10. 100 lb. High Explosive Bomb

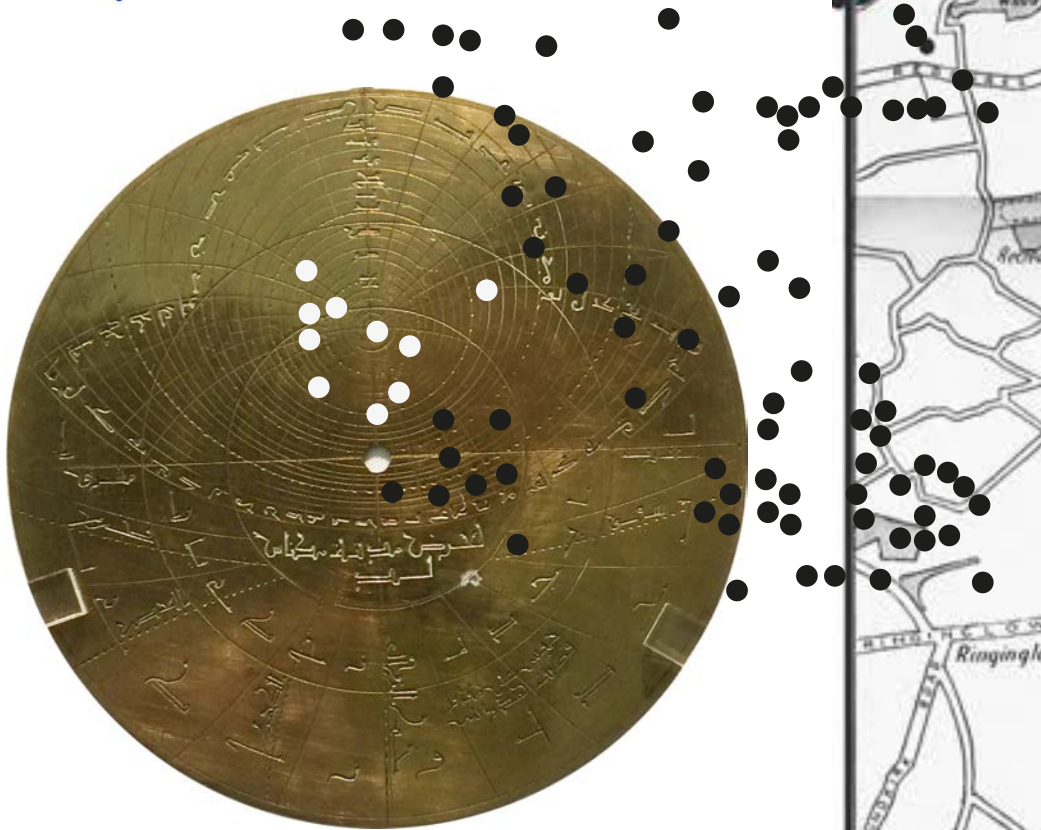
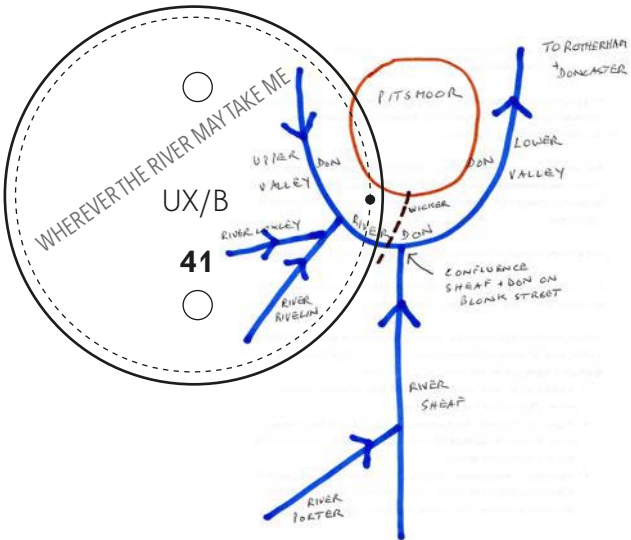


Threads by Barry Hines

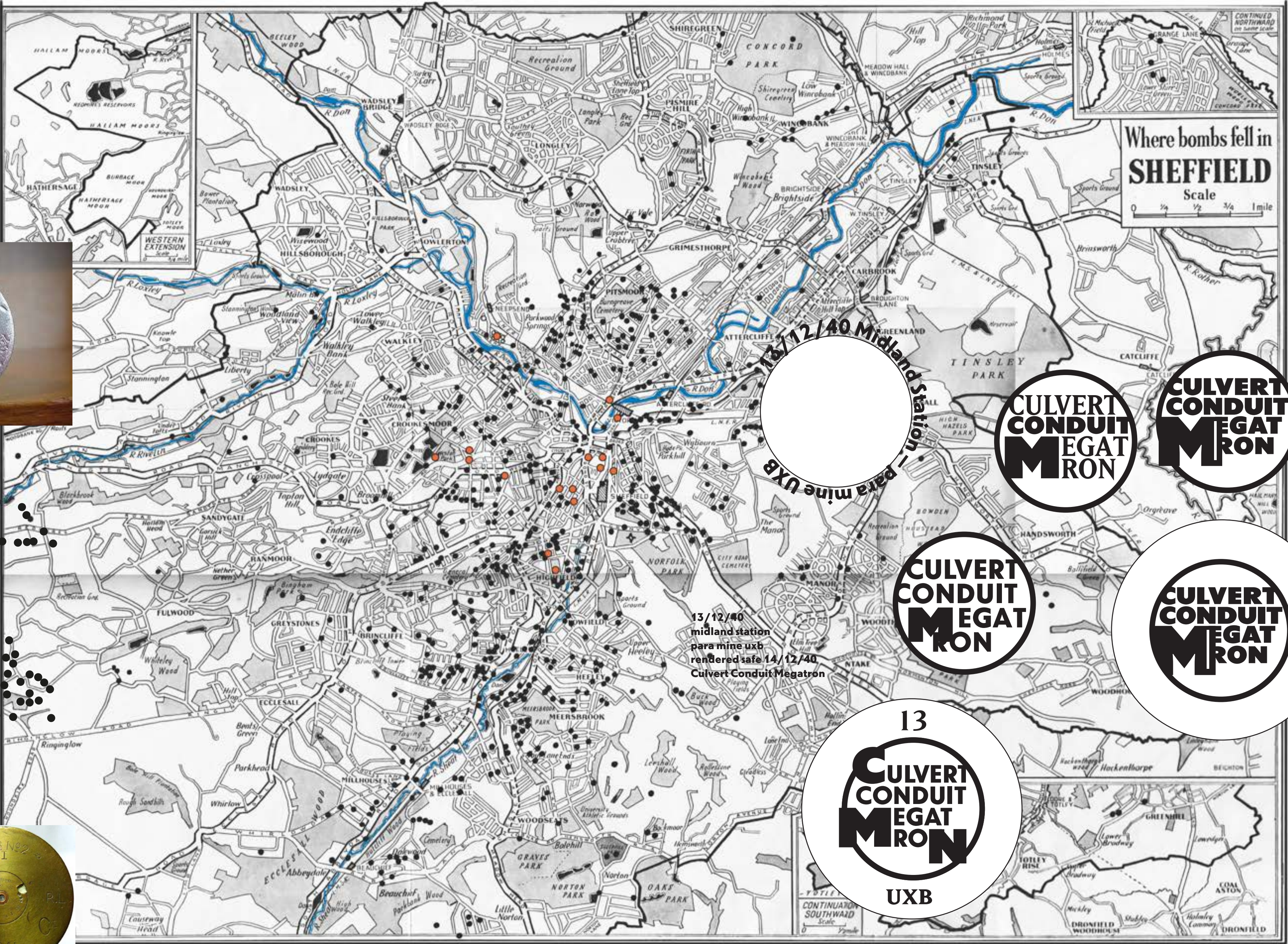
Threads by Barry Hines



where bombs fell



Yeah, a river flows underneath this city
I'd like to go there with you now my pretty & follow it on
for miles & miles, below other people's ordinary lives.
Occasionally catching a glimpse of the moon, thru'
man-hole covers along the route.
Yeah, it's dark sometimes but if you hold my hand, I think I
know the way.
Oh, this is as far as we got last time
But if we go just another mile we will surface surrounded
by grass & trees & the fly-over that takes the cars to cities.
Buds that explode at the slightest touch, nettles that sting -
but not too much.
I've never been past this point, what lies ahead I really
could not say.
I used to live just by the river, in a dis-used factory just off
the Wicker.
The river flowed by day after day
"One day" I thought, "One day I will follow it" but that day
never came
I moved away & lost track but tonight I am thinking about
making my way back.
I may find you there & float on wherever the river may
take me.
Wherever the river may take me.
Wherever the river may take us.
Wherever it wants us to go.
Wherever it wants us to go.



13/12/40 Midland Station - para mine UXB

CULVERT
CONDUIT
MEGATRON

CULVERT
CONDUIT
MEGATRON

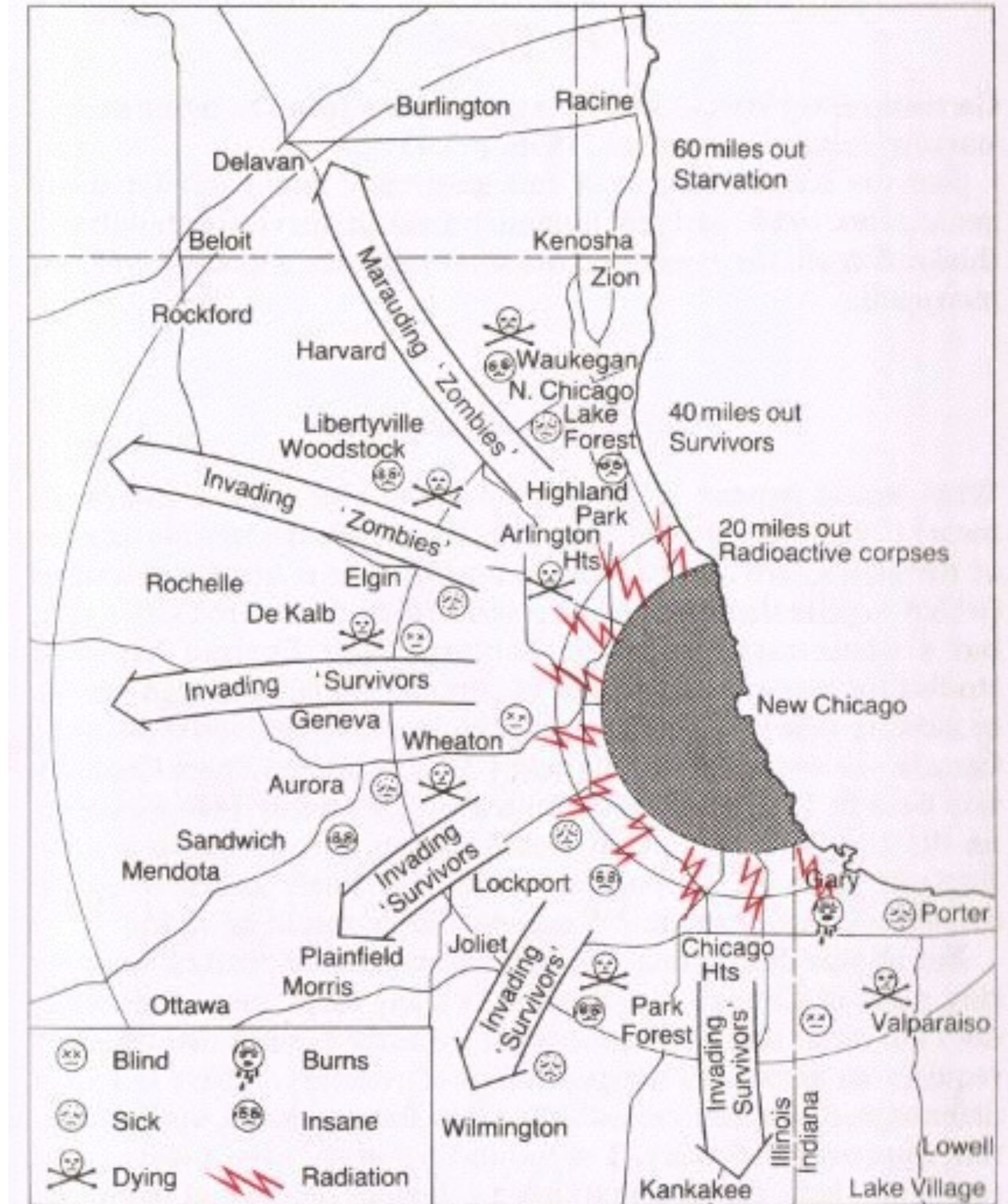
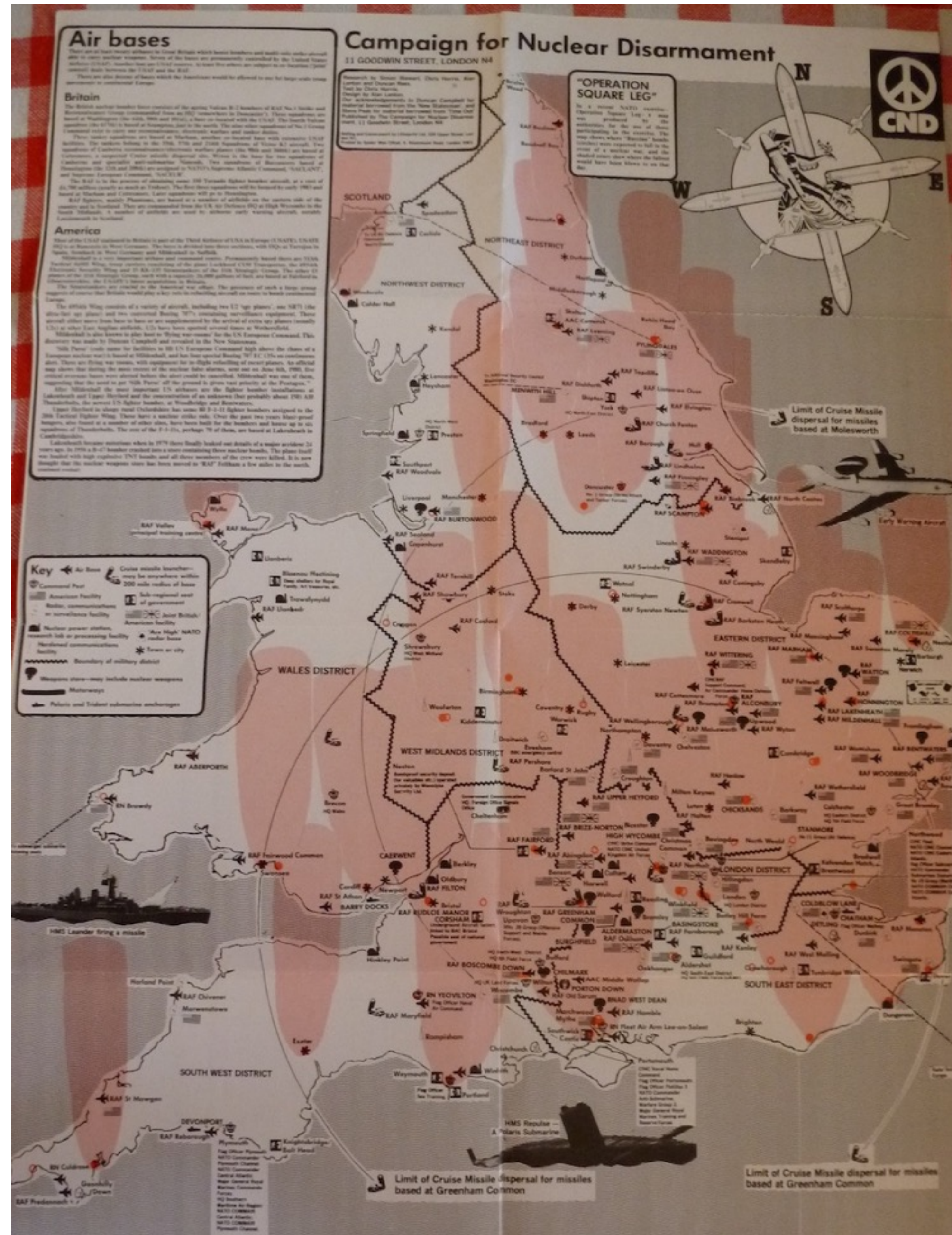
CULVERT
CONDUIT
MEGATRON

CULVERT
CONDUIT
MEGATRON

13
CULVERT
CONDUIT
MEGATRON
UXB

13/12/40
midland station
para mine uxb
rendered safe 14/12/40
Culvert Conduit Megatron

where bombs fell

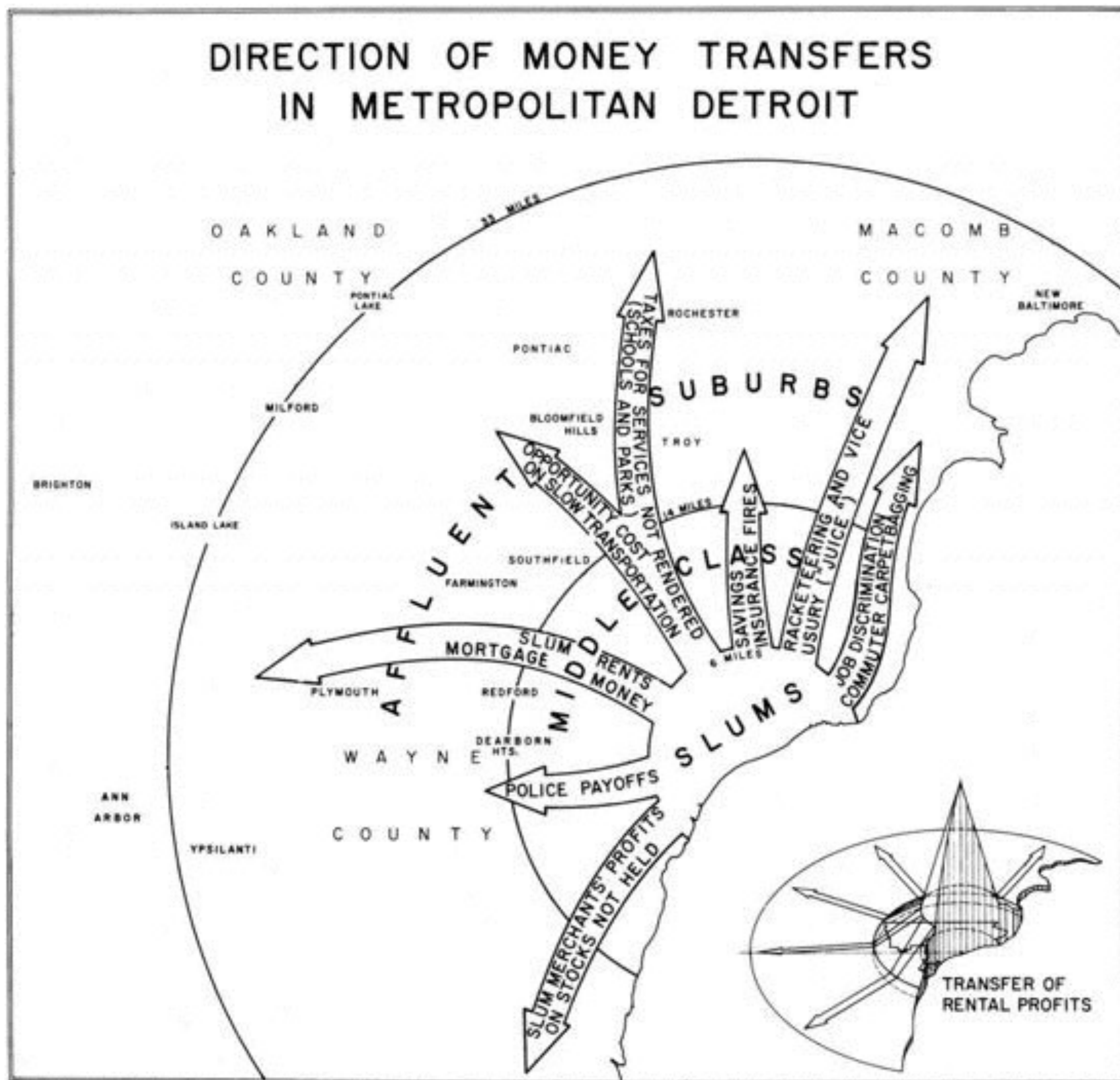


Map 1.4 New Chicago

The third ring map is apparent the minute the firestorm has burned out. It is the geography of New Chicago, which gradually fades away only after thousands of years. The new Port of Chicago, the Bay of Chicago, is surrounded by a 'hot' ring. The corpses do not begin to be evident until the edges of the firestorm are passed.

The survivors, however, are the ultimate blight of all. The rings of the dead, blinded, crazed, dying-of-radiation-sickness finally give way to the largest ring, the ring of the starving. Even distant farmers, without pesticides, fertilizer, horses or gasoline for farm machinery, might starve.

where bombs fell



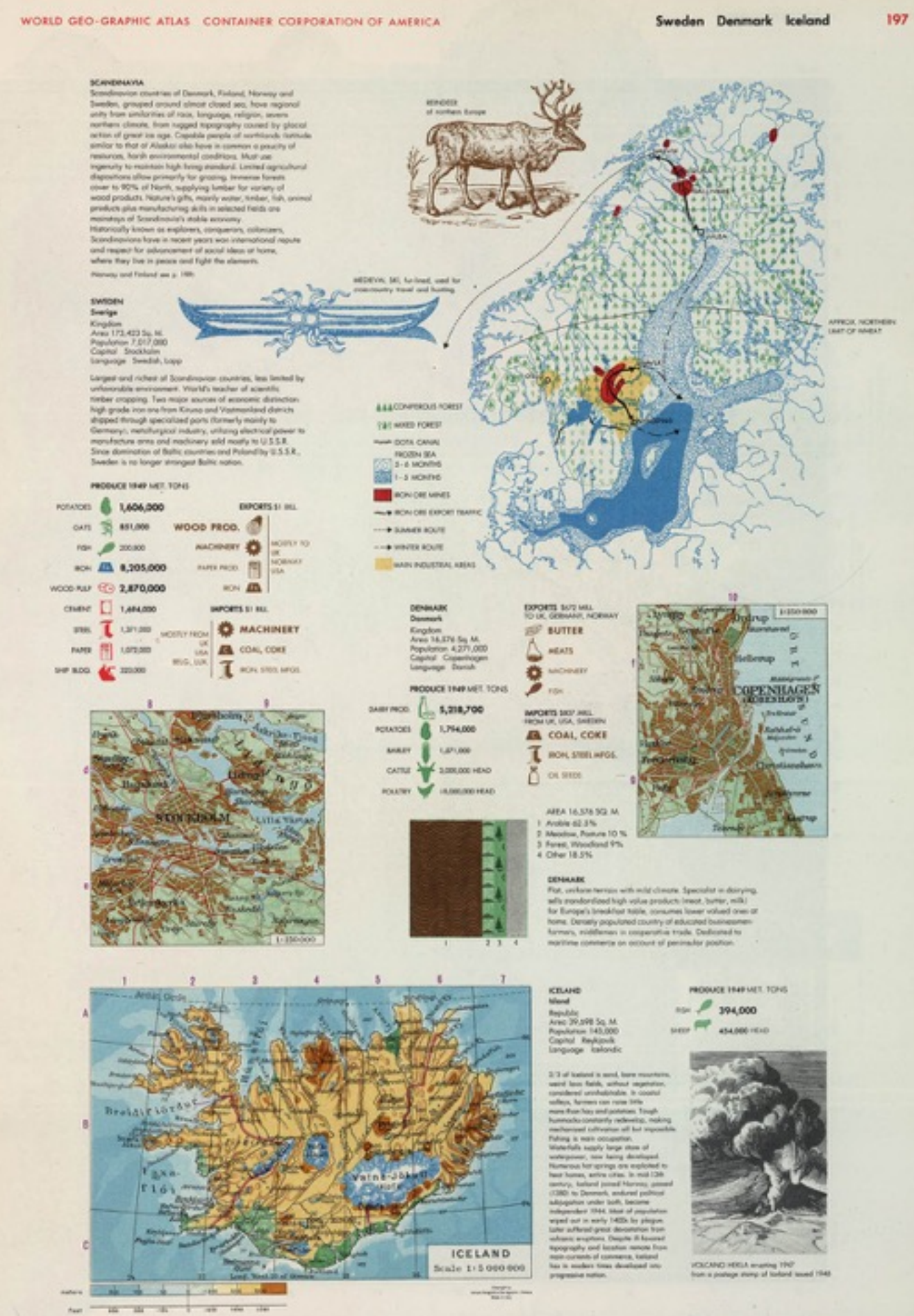
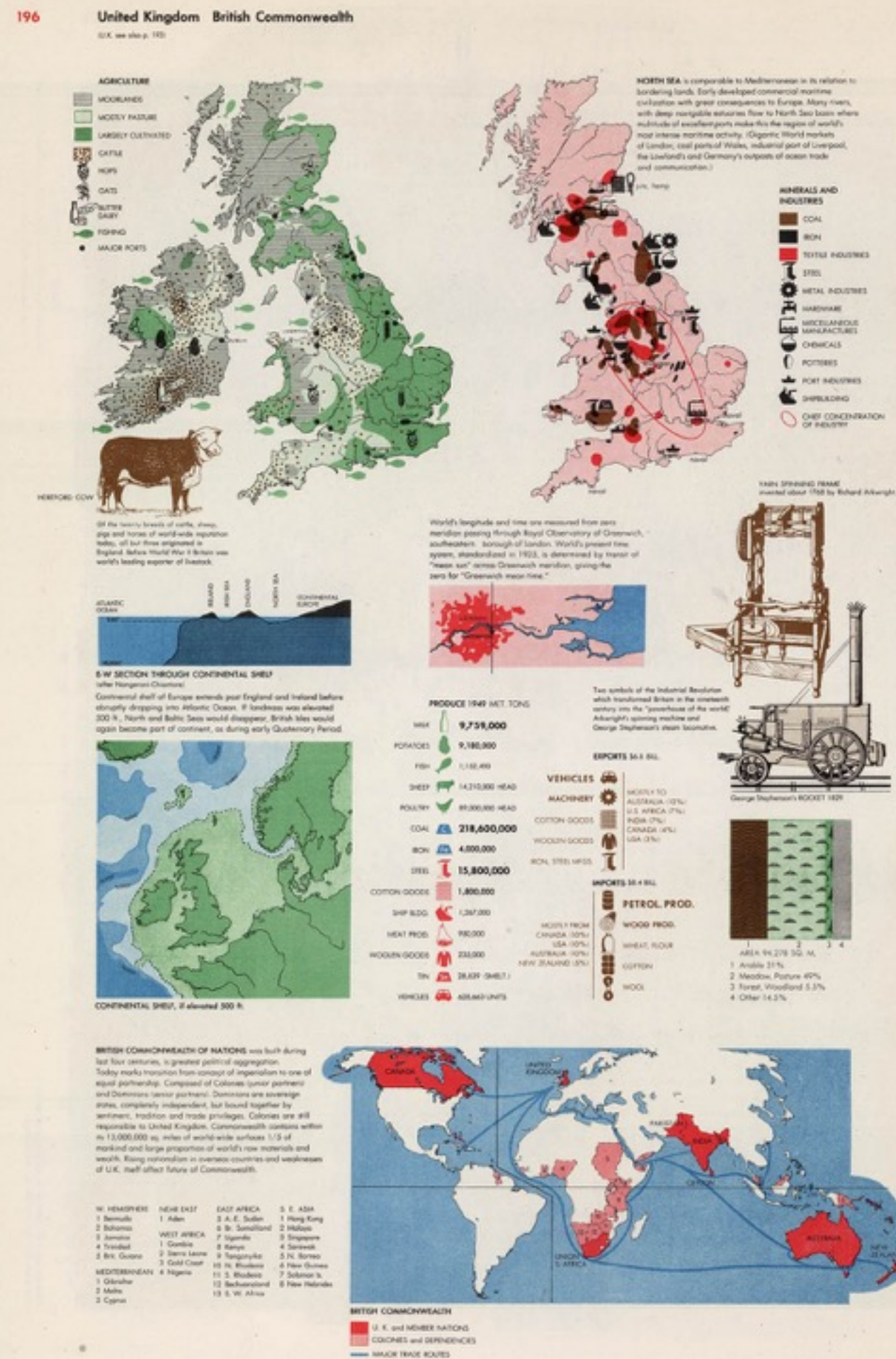
where bombs fell



Herbert Bayer

1900 (Haag am Hausruck) - 1985 (California)

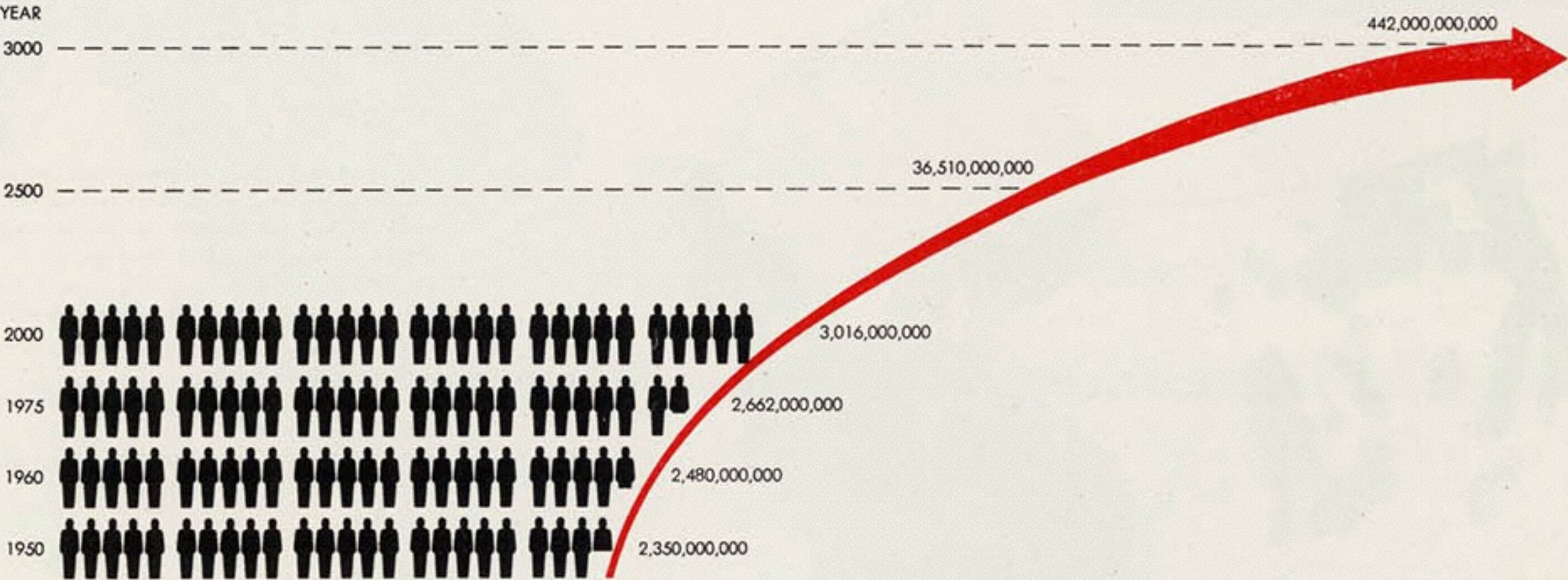
where bombs fell



World Geo-Graphical Atlas
Bayer, Rosenzweig,
Gardiner & Nakagawa, 1953

where bombs fell

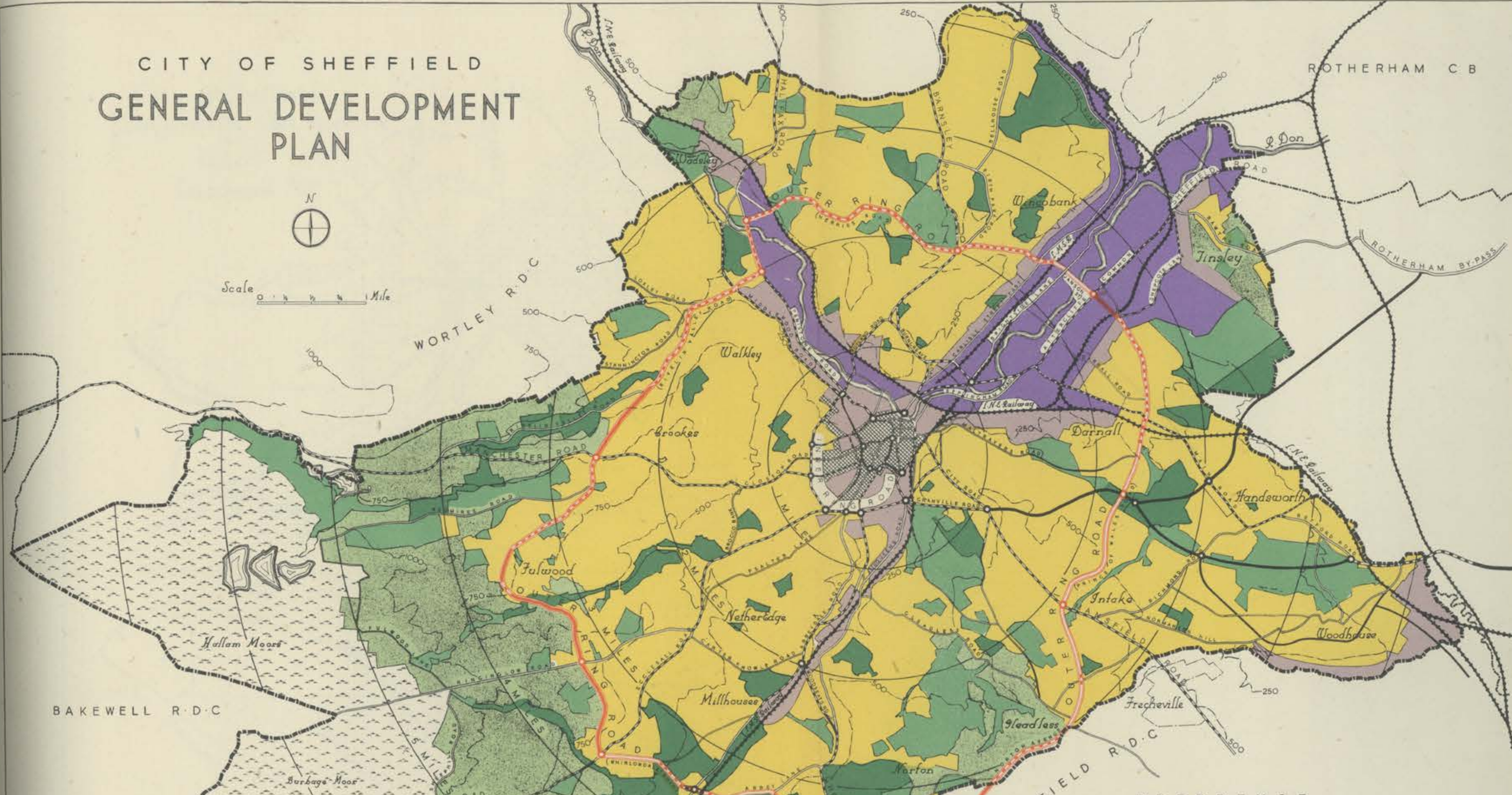
ACREAGE OF ARABLE LAND
NEEDED TO FEED AND CLOTHE
ONE PERSON ADEQUATELY



FUTURE WORLD POPULATIONS (after E. C. Rhodes, University of London)
based on 0.50% annual increase.
(World increase for 1937-47 was estimated to be just under 0.75%)

World Geo-Graphical Atlas
Bayer, Rosenzweig,
Gardiner & Nakagawa, 1953

where bombs fell



where bombs fell

‘All that is solid melts into air, all that is holy is profaned’

Marx & Engels, 1848 (From chapter 1 of the Communist Manifesto)

where bombs fell

Cloud-puffball, torn tufts, tossed pillows flaunt forth, then chevy on an air-
Built thoroughfare: heaven-roysterers, in gay-gangs they throng; they glitter in marches.
Down roughcast, down dazzling whitewash, wherever an elm arches,
Shivelights and shadowtackle in long lashes lace, lance, and pair.
Delightfully the bright wind boisterous ropes, wrestles, beats earth bare
Of yestertempest's creases; in pool and rut peel parches
Squandering ooze to squeezed dough, crust, dust; stanches, starches
Squadroned masks and manmarks treadmire toil there
Footfretted in it. Million-fuelèd, nature's bonfire burns on.

‘That Nature is a Heraclitean Fire and of the Comfort of the Resurrection’ Gerard Manley Hopkins, 1888.

where bombs fell

Admission £1
12-8 Tuesday to Sunday

riverside studios

01-741 2251

Crisp Road, Hammersmith,
London W6

An exhibition

7 January - 14 February

HUMPHREY JENNINGS: FILM-MAKER, PAINTER, POET.

Programmes of Jennings films, including 'Spare Time', 'Words for Battle', 'Listen to Britain', 'Fires Were Started' and 'A Diary for Timothy' will be shown on 7, 8, 13, 14, 15, 16, 20, 21, 22, 23, 27 & 28 January, & 4, 5 & 6 February, at 5pm. Seminars and readings on 16 & 23 January and 6 & 13 February at 3pm.

Hammersmith Riverside Arts Trust Ltd
gratefully acknowledges financial assistance from
the London Borough of Hammersmith & Fulham,
the Arts Council of Great Britain,
the Greater London Arts Association and
the Elephant Trust.

HUMPHREY JENNINGS:
FILM-MAKER, PAINTER,
POET.

Edited by
Mary-Lou Jennings

Contributions by
Leslie Anderson
Charles Hodge
Daniel Miller
Kathleen Ryan
Dan Vancleave
with an introduction by Sir Richard Penson

A black and white portrait of Humphrey Jennings, a middle-aged man with short, light-colored hair, smiling slightly. He is wearing a dark suit jacket over a light-colored shirt and a dark tie. He is holding a large, vintage movie camera with both hands in front of him. The background is out of focus, showing what appears to be an industrial or urban setting with some structures.[illegible]

where bombs fell

‘London/Britain Can Take It!’

GPO Film Unit, dir. Harry Watt & Humphrey Jennings, 1940

‘Listen to Britain’

Crown Film Unit, dir. Humphrey Jennings, 1942

‘Fires were started’

Crown Film Unit, dir. Humphrey Jennings, 1943

Fires Were Started
Humphrey Jennings, 1943

“FIRES WERE
STARTED...”

Crown Film Unit,
Jennings (1943)

where bombs fell



London Olympic Opening Ceremony
Dir: Danny Boyle, Wr: Frank Cottrell Boyce

Frank Cottrell Boyce: what's the point of culture in Brexit Britain?

Four years ago the writer helped put together the Olympics opening ceremony. In this exclusive preview of his Proms Lecture he reflects on its cultural legacy in the wake of the referendum



‘Strangers would thank me for helping them feel proud to be British’ ... the 2012 London Olympic Games opening ceremony. Photograph: Julian Simmonds/Rex/Shutterstock

I love being a writer. Never wanted to be anything else.

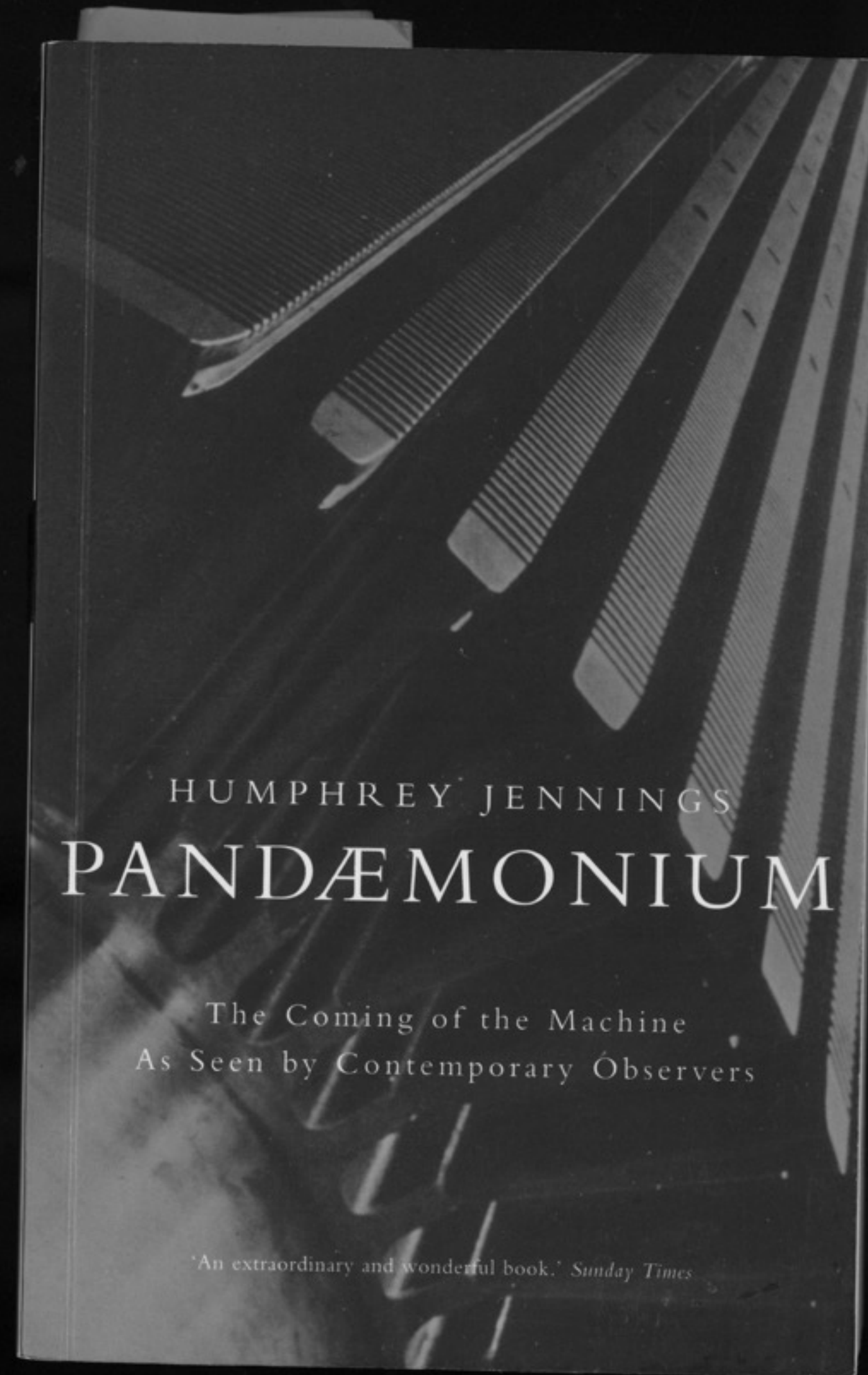
When I get into a conversation with a stranger on a train or in the barber’s, and it gets to the bit where they say, “And what do you do?” I feel like I’m boasting when I admit, “Actually I’m a writer.” Then ... the hammer blow ...

“Written anything I might have heard of?”

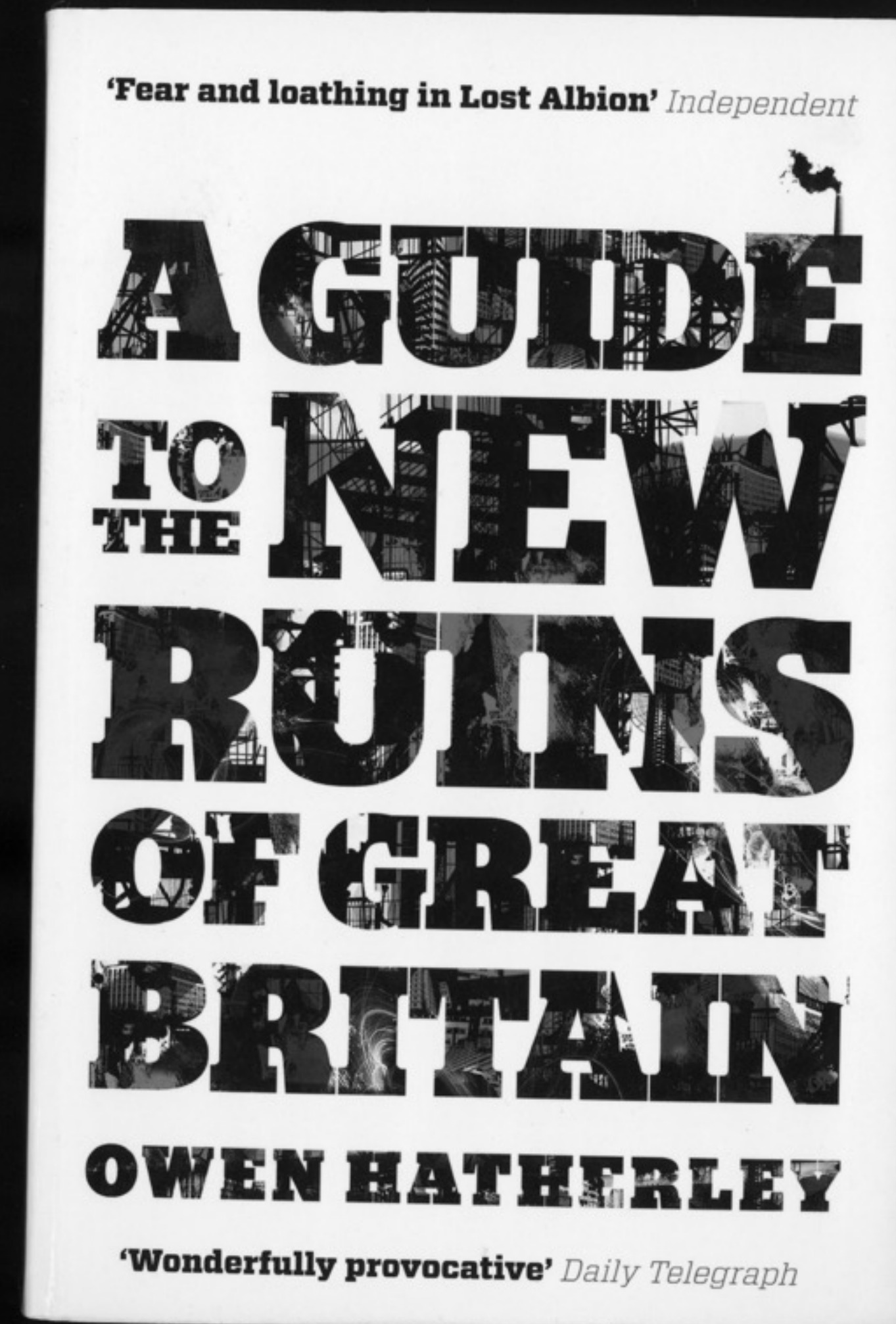
And the only possible answer is a muttered, “Excuse me, I think this is my stop.”

Until 2012. After that my answer was “I was the writer who helped Danny Boyle

where bombs fell



Jennings, H., Jennings, M.-L., & Madge, C. (1995). *Pandaemonium: 1660-1886: The coming of the machine as seen by contemporary observers*. London: Papermac.



Hatherley, O. (2010). *A guide to the new ruins of great Britain*. London, UK: Verso Books.

where bombs fell



Vertigo
Alfred Hitchcock, 1958



La Jetee
Chris Marker, 1962

where bombs fell

HEINKEL
JUNKERS
DORNIER

The British Landscape, Sheffield, 1982
John Davies

14.12.1940
Campo Lane / Vicar Lane
High Explosive &
Incendiary Bomb

where bombs fell

A FIELD IN EN GLA ND

HERE. LOOK TOWARDS THE
SITE OF THE OLD CASTLE.

A Field in England
Amy Jump & Ben Wheatley, 2013

12. 12. 1940
Angel Street /
Corner of Bank Street
High Explosive

where bombs fell

CCXCIV. S.E. 1° 28'

Div. of Party. Boro. By

where bombs fell

how to make the city more legible?

where bombs fell

to design an interface to upload and
download stories from the past?

where bombs fell

**where
bombs
fell** + **the
internet
of
things** = ?

where bombs fell

evocative
layer

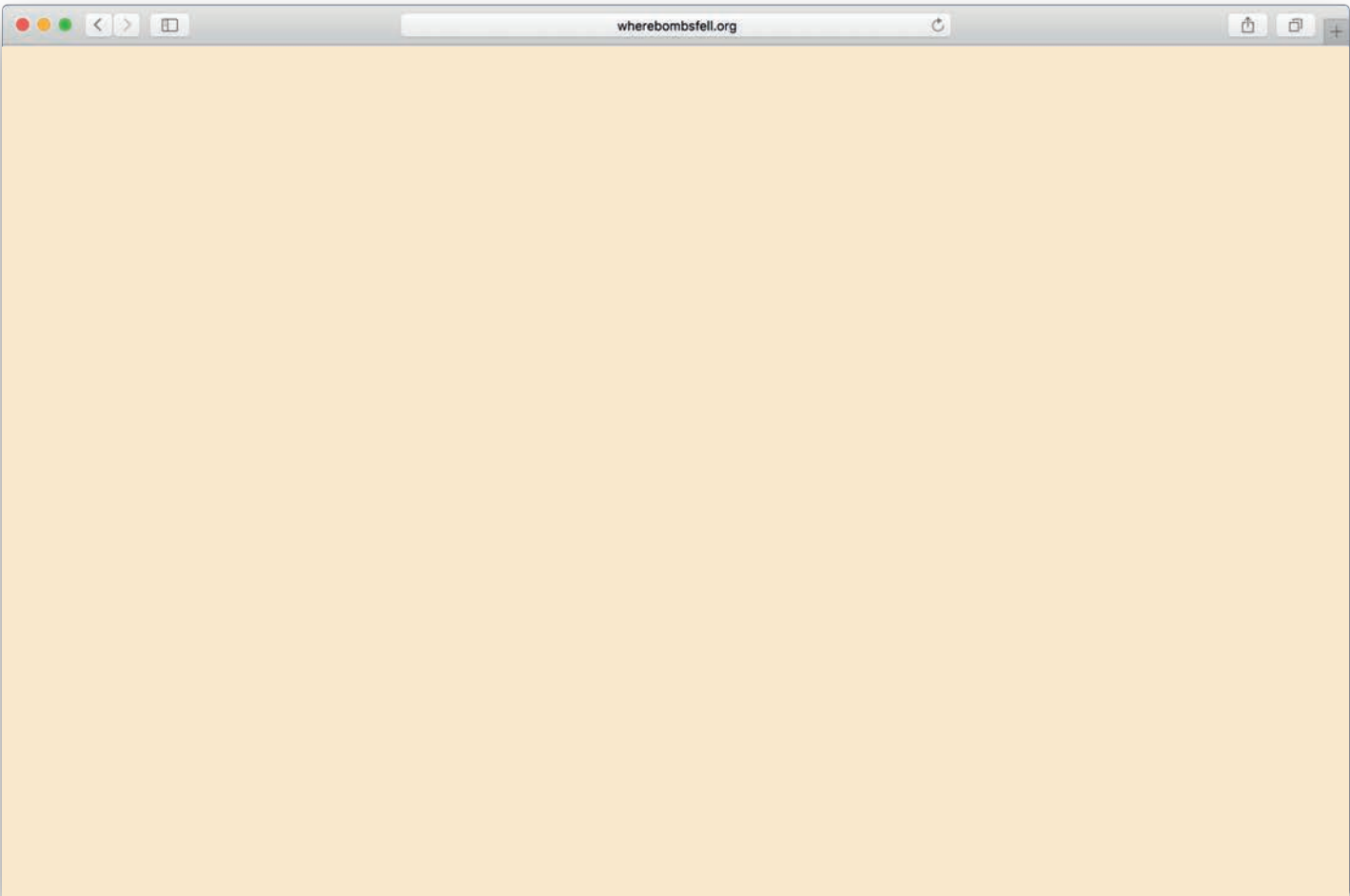
Visualising the stories relating
to the bomb and it's impact at
the site.

illustration reference

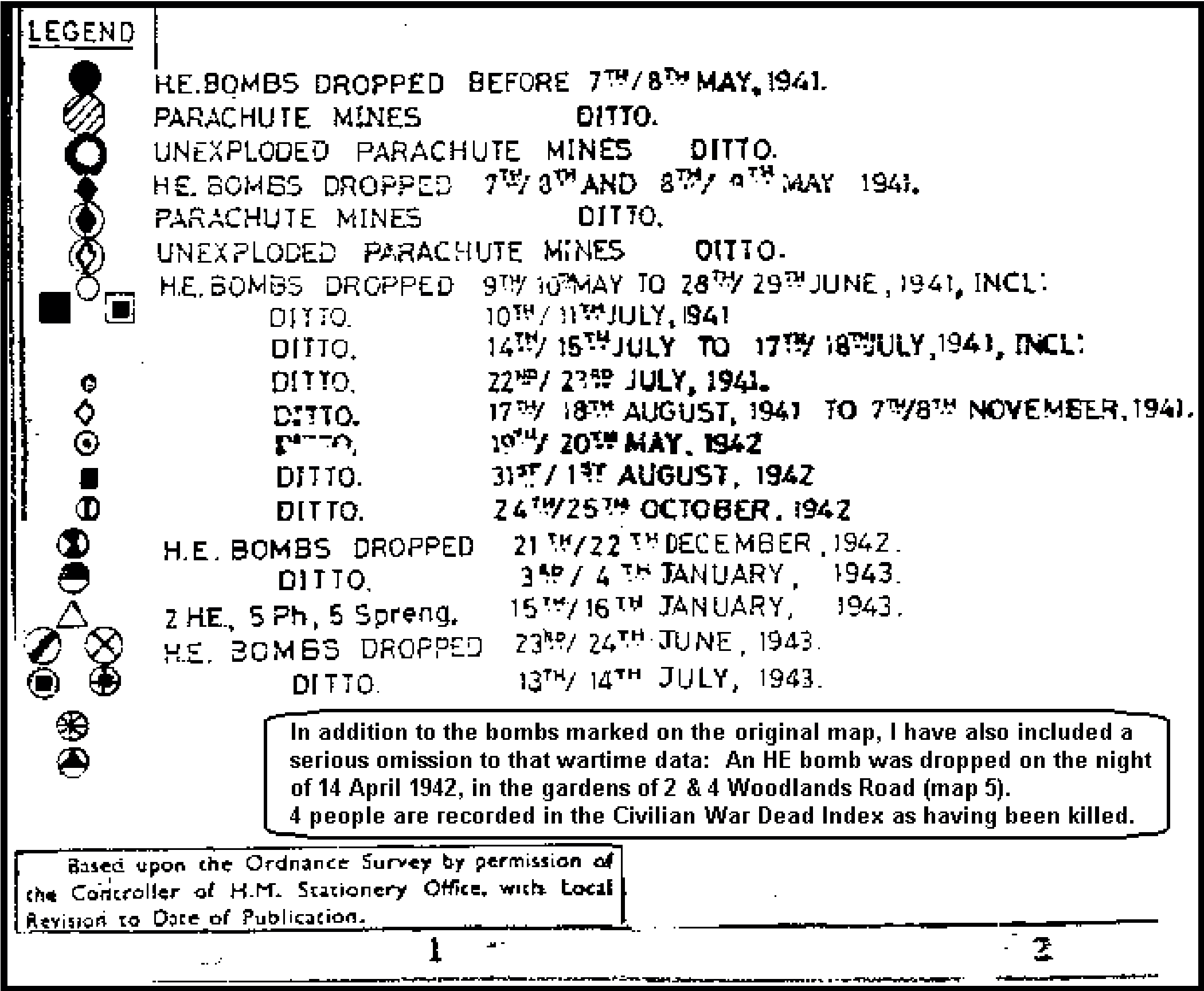
interactive
layer

Instructing the viewer on how to
interact with the marker and
link with other stories.

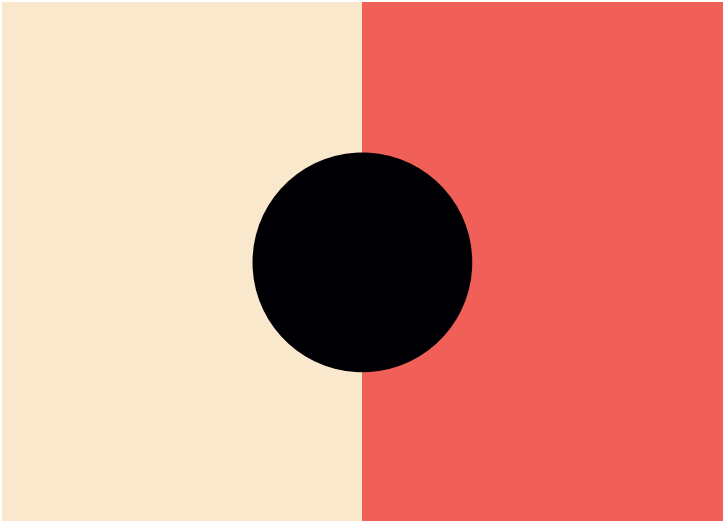
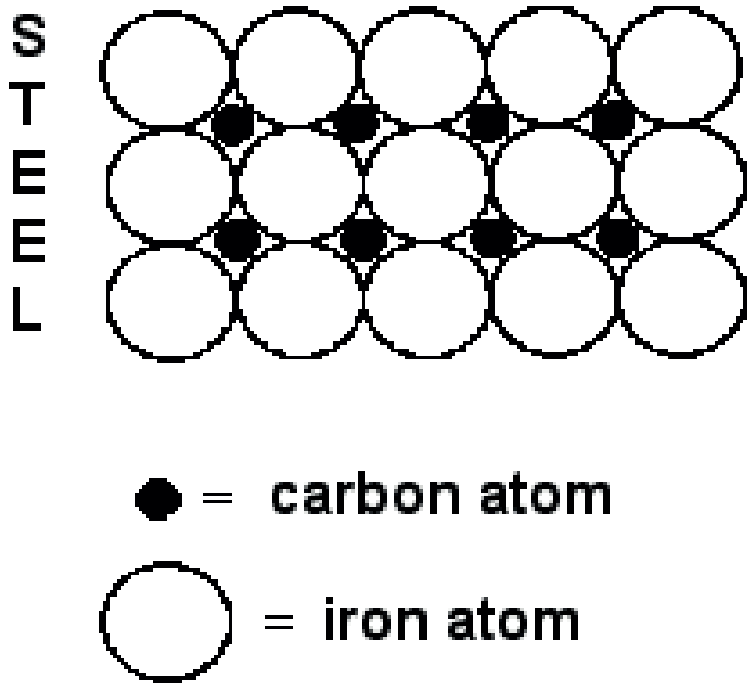
digital
manifestation



where bombs fell



visual language



where bombs fell
physical manifestation



where bombs fell
physical manifestation



where bombs fell
physical manifestation



where bombs fell

narratives

CULVERT CON MCAUIT MEGAT RON

13.12.1940
Midland Station
Parachute Mine &
Unexploded Bomb

**THIS IS A JOURNEY
THROUGH NOW.**

**YOU WILL REMEMBER
WHAT WAS, SEE WHAT
IS AND IMAGINE WHAT
WILL BE.**

where bombs fell
narratives

A SHEFFEL DE THWITEL BARE HE IN HIS HOSE

HERE STOOD WALKER & HALL.

The first documented use of the term “cutler” in Sheffield appeared in a 1297 tax return. Chaucer referenced Sheffield as a centre of cutlery in The Reeve’s Tale in 1380 where he says of the Miller of Trompington “a Shefelde thwitel bare he in his hose”. The thwitel was a knife.

1624: The Company of Cutlers in Hallamshire was formed to oversee the cutlery trade in the town. By the mid C17 60% of the workers in Sheffield were working in the cutlery trades.

1913: Stainless steel was invented by Harry Brearley whilst working at the Brown Firth Laboratories.

Specialising in electro plate, cutlery and silver, the central block of the Electro Works of Walker & Hall dominated the central Sheffield skyline from the later 19th century up until the blitz. By 1894 the company reported a total of 1500 employees.

Two metal flags ‘flew’ over the building forming the identity for the company and marked on its goods. W&H rebuilt and continued production until 1963 and the building was demolished in 1965.

David Mellor joined Walker & Hall in 1954, where he designed the iconic ‘Pride’ range of cutlery. This range won a Design Centre award in 1957.

**Return to the confluence of
the Sheaf and Porter.**

where bombs fell
narratives

8.

DUL
CE ET
DECORUM EST
PRO PATRIA
MORI

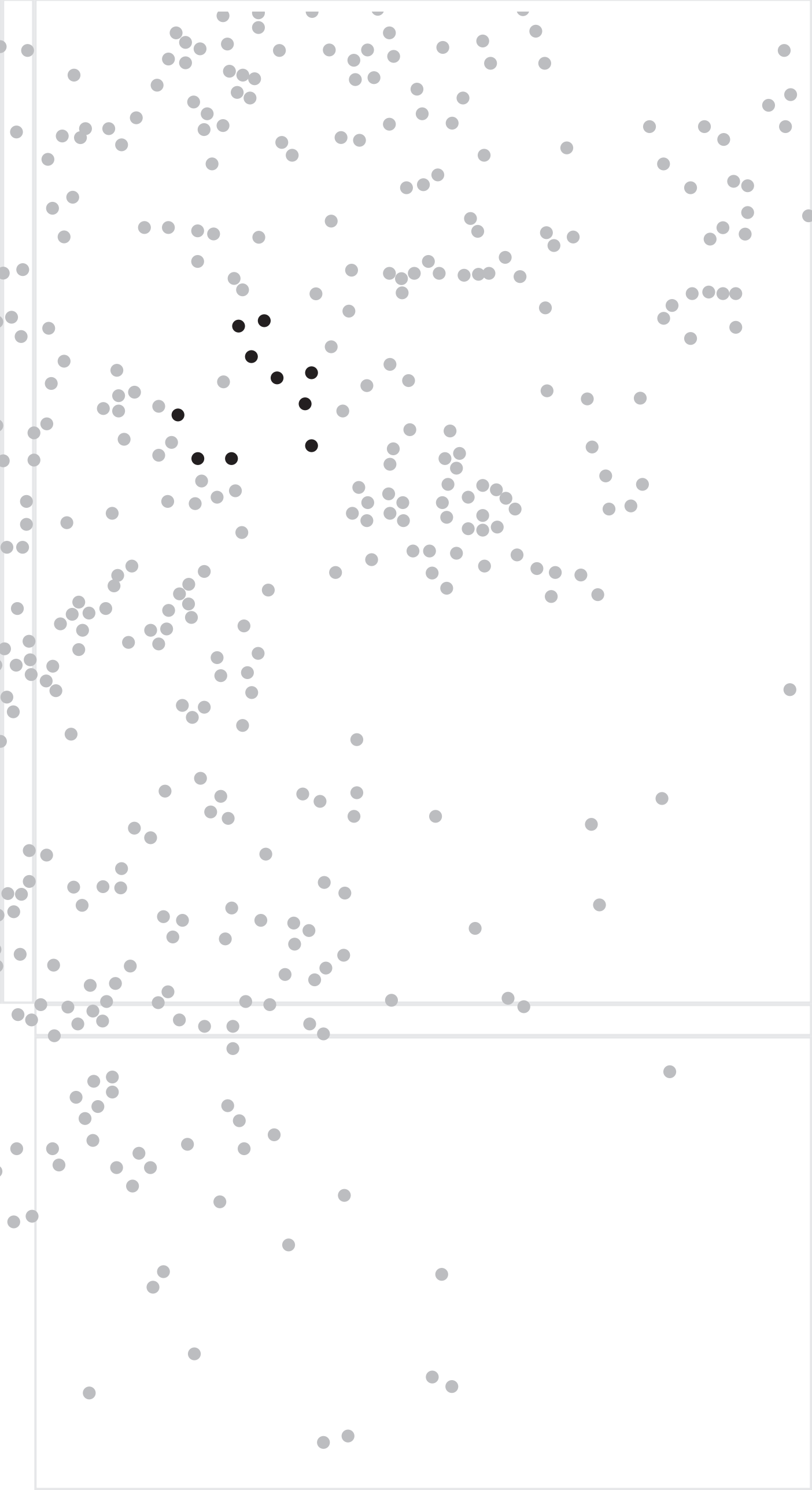
13. 12. 1940
Barkers Pool
High Explosive

where bombs fell
narratives

HERE LIES GRANBY.

Each location featured here is commemorated with an 80mm bronze plaque. The designs featured on the plaques use four weights of Granby – Hippo, extra bold, bold and medium.

Granby is a Stephenson Blake typeface that first appeared in 1930 at a time when the Sheffield type foundry held the metal patterns for London Underground’s Johnston wood letter. Granby drew influence from Gill Sans and the geometric sans serifs Futura, Erbar and Kabel.



where bombs fell
walks

