

Social security cuts and life expectancy: a longitudinal analysis of local authorities in England, Scotland and Wales

SEAMAN, Rosie, WALSH, David, BEATTY, Christina <<http://orcid.org/0000-0003-0943-9979>>, MCCARTNEY, Gerry and DUNDAS, Ruth

Available from Sheffield Hallam University Research Archive (SHURA) at:

<http://shura.shu.ac.uk/32655/>

This document is the author deposited version. You are advised to consult the publisher's version if you wish to cite from it.

Published version

SEAMAN, Rosie, WALSH, David, BEATTY, Christina, MCCARTNEY, Gerry and DUNDAS, Ruth (2023). Social security cuts and life expectancy: a longitudinal analysis of local authorities in England, Scotland and Wales. *Journal of Epidemiology and Community Health*.

Copyright and re-use policy

See <http://shura.shu.ac.uk/information.html>

Supplementary Materials

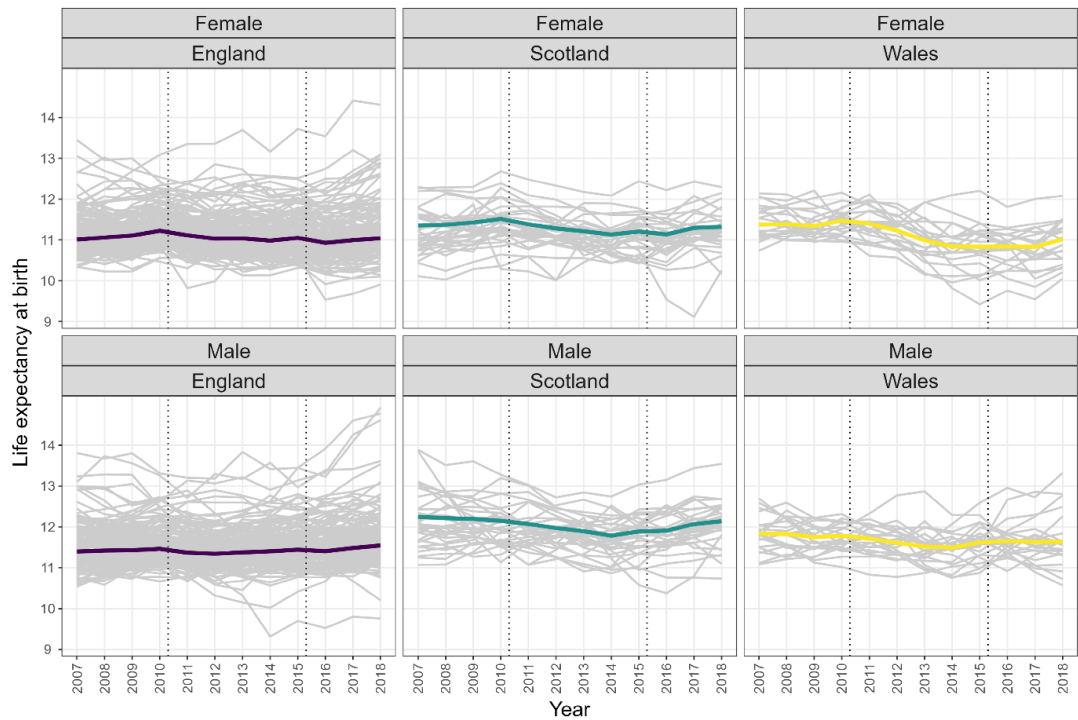
S2: Fixed effects regression results – the effect of cumulative social security cuts on life expectancy at birth (2-year time lag)

sex	term	ex estimates	95% CI lower	95% CI upper	p- value
Female	(Intercept)	83.35	83.20	83.49	0.00
Female	Year (mortality)	0.09	0.04	0.14	0.00
Female	Social security loss	-0.08	-0.13	-0.03	0.00
Female	Scotland	-2.36	-2.49	-2.23	0.00
Female	Wales	-1.82	-2.15	-1.49	0.00
Female	Social security loss*Scotland	-0.06	-0.09	-0.02	0.00
Female	Social security loss*Wales	0.00	-0.03	0.03	0.96
Male	(Intercept)	80.15	79.97	80.33	0.00
Male	Year (mortality)	0.06	0.01	0.11	0.03
Male	Social security loss	-0.02	-0.08	0.04	0.52
Male	Scotland	-3.22	-3.43	-3.02	0.00
Male	Wales	-1.50	-1.74	-1.25	0.00
Male	Social security loss*Scotland	-0.08	-0.12	-0.05	0.00
Male	Social security loss*Wales	-0.06	-0.11	-0.02	0.01

S3: Fixed effects regression results - the effect of cumulative social security cuts on remaining life expectancy at age 65 years old.

sex	term	ex estimates	95% CI lower	95% CI upper	p- value
Female	(Intercept)	21.53	21.46	21.60	0.00
Female	Year (mortality)	0.03	0.00	0.06	0.07
Female	Social security loss	-0.02	-0.05	0.01	0.18
Female	Scotland	-1.80	-1.91	-1.69	0.00
Female	Wales	-1.62	-1.96	-1.28	0.00
Female	Social security loss*Scotland	0.02	0.00	0.05	0.06
Female	Social security loss*Wales	-0.02	-0.05	0.00	0.05
Male	(Intercept)	18.77	18.51	19.03	0.00
Male	Year (mortality)	0.07	0.03	0.11	0.00
Male	Social security loss	-0.02	-0.06	0.02	0.40
Male	Scotland	-1.71	-2.02	-1.41	0.00
Male	Wales	-0.72	-1.03	-0.42	0.00
Male	Social security loss*Scotland	-0.02	-0.04	0.01	0.25
Male	Social security loss*Wales	-0.01	-0.04	0.02	0.66

S4: Lifespan variation at birth



S5: Fixed effects regression results - the effect of cumulative social security cuts on lifespan variation at age 0.

sex	term	edagger estimates	95% CI lower	95% CI upper	p- value
Female	(Intercept)	11.17	11.00	11.34	0.00
Female	Year (mortality)	-0.04	-0.08	0.00	0.05
Female	Social security loss	0.03	-0.02	0.07	0.23
Female	Scotland	0.13	-0.05	0.30	0.15
Female	Wales	-0.24	-0.71	0.23	0.31
Female	Social security loss*Scotland	0.00	-0.04	0.03	0.73
Female	Social security loss*Wales	-0.08	-0.12	-0.04	0.00
Male	(Intercept)	11.04	10.83	11.24	0.00
Male	Year (mortality)	0.00	-0.04	0.04	0.87
Male	Social security loss	0.03	-0.01	0.06	0.19
Male	Scotland	0.77	0.55	1.00	0.00
Male	Wales	0.55	0.28	0.83	0.00
Male	Social security loss*Scotland	-0.05	-0.08	-0.02	0.00
Male	Social security loss*Wales	-0.01	-0.05	0.03	0.54