

**The effect of specific bioactive collagen peptides on function and muscle remodeling during human resistance training**

BALSHAW, Thomas G., FUNNELL, Mark P., MCDERMOTT, Emmet, MADEN-WILKINSON, Tom <<http://orcid.org/0000-0002-6191-045X>>, ABELA, Sean, QUTEISHAT, Btool, EDSEY, Max, JAMES, Lewis J. and FOLLAND, Jonathan P.

Available from Sheffield Hallam University Research Archive (SHURA) at:

<http://shura.shu.ac.uk/31175/>

---

This document is the author deposited version. You are advised to consult the publisher's version if you wish to cite from it.

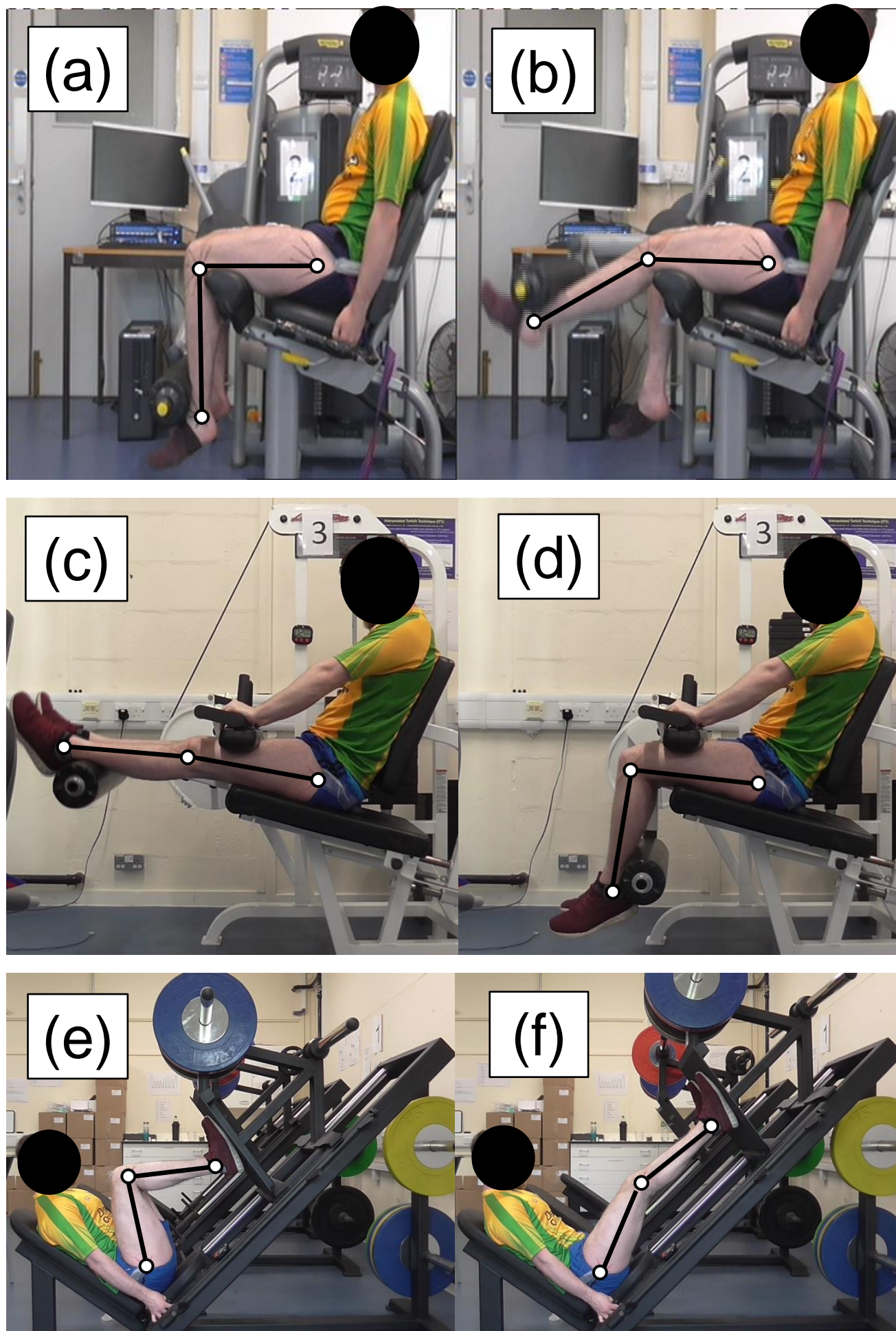
**Published version**

BALSHAW, Thomas G., FUNNELL, Mark P., MCDERMOTT, Emmet, MADEN-WILKINSON, Tom, ABELA, Sean, QUTEISHAT, Btool, EDSEY, Max, JAMES, Lewis J. and FOLLAND, Jonathan P. (2022). The effect of specific bioactive collagen peptides on function and muscle remodeling during human resistance training. *Acta Physiologica*, 237 (4): e13903.

---

**Copyright and re-use policy**

See <http://shura.shu.ac.uk/information.html>



**Supplementary material 2.** Unilateral knee extension (a, b), bilateral knee flexion (c, d), and bilateral leg press (e, f) training exercises. The images in the left column display the knee joint angle at the start of the concentric phase of each exercise, whereas the images in the right column display the knee joint angle at the end of the concentric phase of each exercise.