

Crystal structure, dielectric properties, and optical bandgap control in KNbO₃–BiMnO₃ ceramics

PASCUAL-GONZALEZ, Cristina, ELICKER, Carolina, MOREIRA, Mario L., CAVA, Sergio, STERIANOU, Iasmi, WANG, Dawei and FETEIRA, Antonio <<http://orcid.org/0000-0001-8151-7009>>

Available from Sheffield Hallam University Research Archive (SHURA) at:
<http://shura.shu.ac.uk/30762/>

This document is the author deposited version. You are advised to consult the publisher's version if you wish to cite from it.

Published version

PASCUAL-GONZALEZ, Cristina, ELICKER, Carolina, MOREIRA, Mario L., CAVA, Sergio, STERIANOU, Iasmi, WANG, Dawei and FETEIRA, Antonio (2022). Crystal structure, dielectric properties, and optical bandgap control in KNbO₃–BiMnO₃ ceramics. *Journal of the American Ceramic Society*.

Copyright and re-use policy

See <http://shura.shu.ac.uk/information.html>

Crystal Structure, Dielectric Properties and Optical Bandgap Control in $\text{KNbO}_3\text{-BiMnO}_3$ Ceramics

Cristina Pascual-Gonzalez^{1,2}, Carolina Elicker^{1,3}, Mario L. Moreira³, Sergio Cava³, Iasmi Sterianou¹, Dawei Wang⁴ and Antonio Feteira¹

¹ Materials and Engineering Research Institute, Sheffield Hallam University, Howard Street, S1 1WB, Sheffield, UK.

² Materials Science and Engineering Area, Rey Juan Carlos University, C/Tulipán s/n, 28933, Móstoles, Madrid, Spain.

³ CCAF, IFM/CDTec-PPGCEM, Federal University of Pelotas, CEP: 96010-610 Pelotas, RS, Brazil.

⁴ Shenzhen Institute of Advanced Electronic Materials, Shenzhen Institutes of Advanced Technology, Chinese Academy of Sciences, Shenzhen 518055, China.

*Corresponding authors:

C. Pascual-Gonzalez, cristina.pascualg@urjc.es

A. Feteira, a.feteira@shu.ac.uk

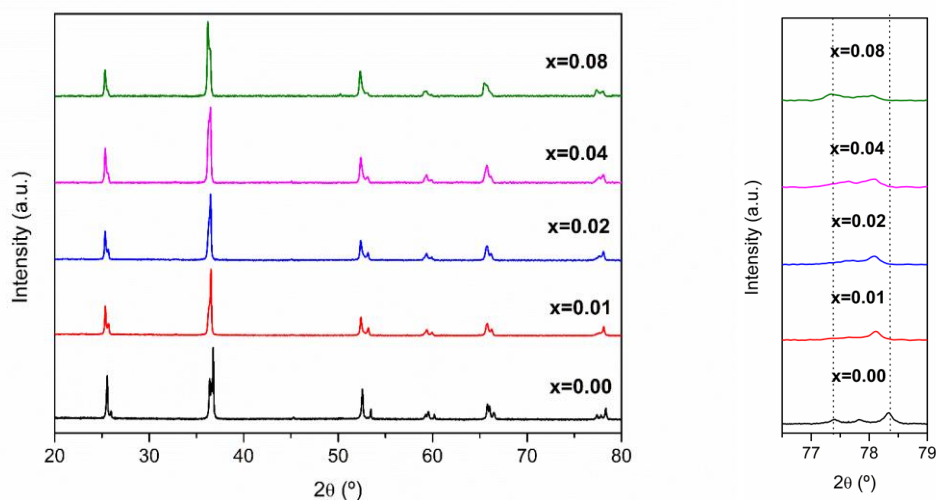


Figure S1. Room-temperature X-ray diffraction data for $(1-x)\text{KNbO}_3\text{-}x\text{BiMnO}_3$ ($x=0.01, 0.02, 0.04$ and 0.08) ceramics.

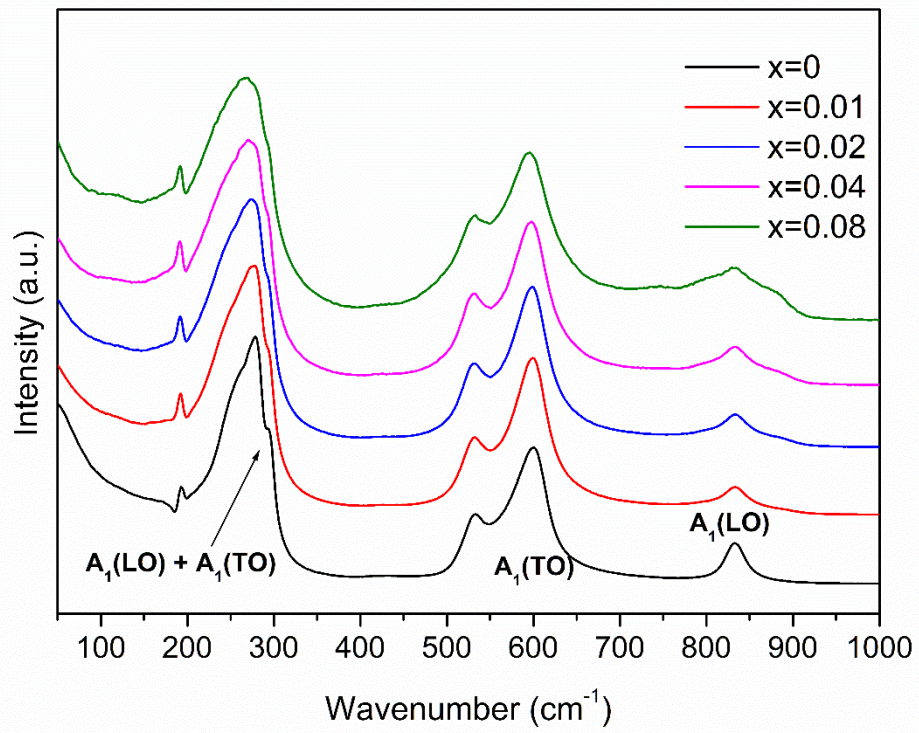


Figure S2. Room-temperature Raman spectra for $(1-x)\text{KNbO}_3-x\text{BiMnO}_3$ ($x=0.01, 0.02, 0.04$ and 0.08) ceramics.

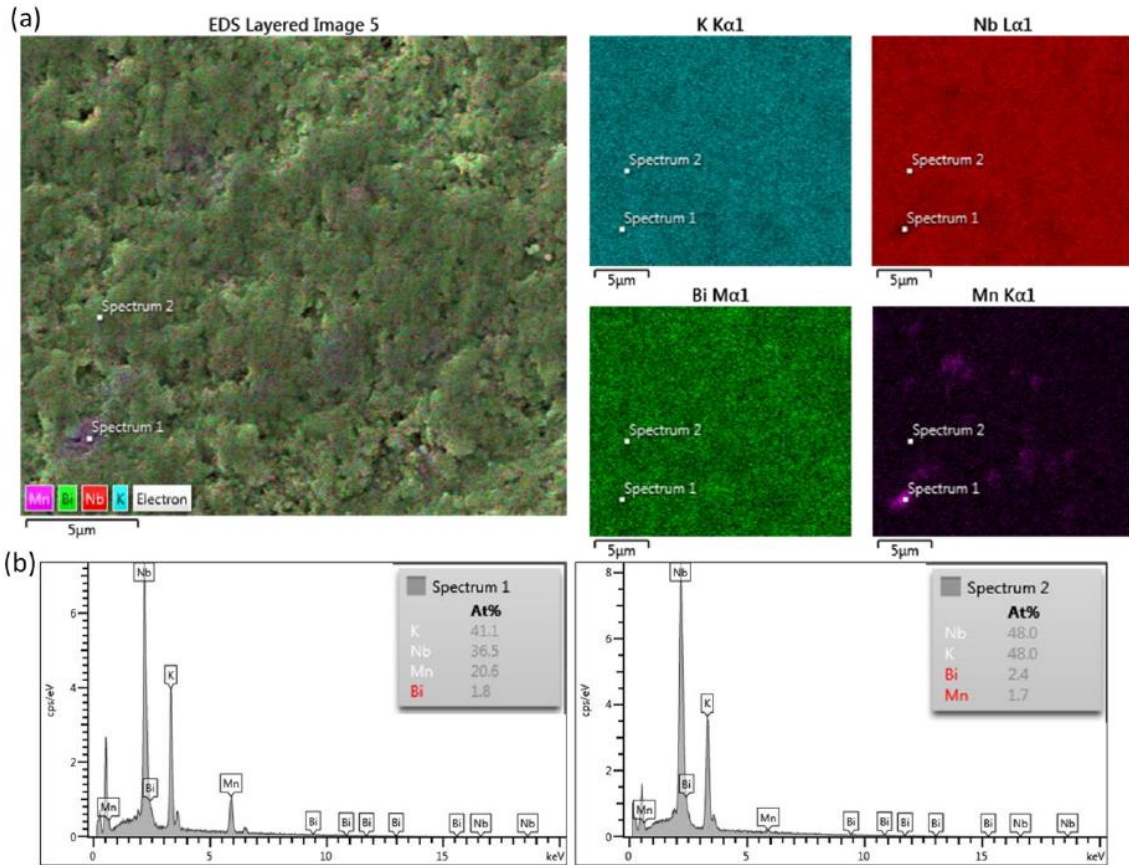


Figure S3: (a) SEM image of the examined region and EDX mapping of K, Nb, Bi and Mn for KNBM $x=0.05$ (b) EDX spectra of Mn-rich region (Spectrum 1) is compared homogeneous region.

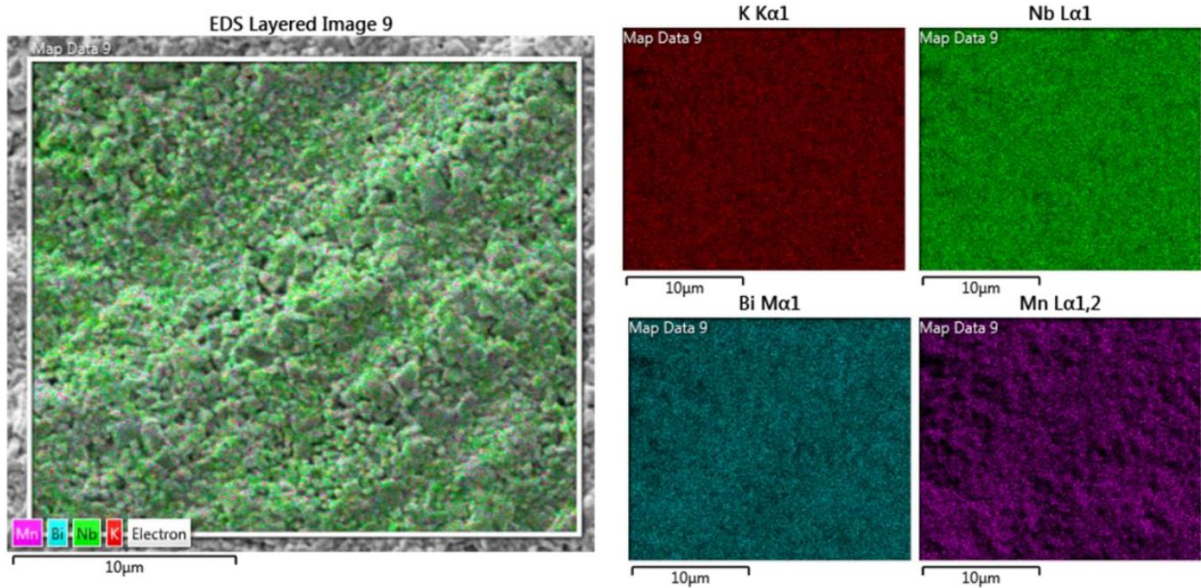


Figure S4: SEM image of the examined region and EDX mapping of K, Nb, Bi and Mn for KNBM $x=0.25$.