

Localization and Composition of Fructans in Stem and Rhizome of *Agave tequilana* Weber var. azul

PÉREZ-LÓPEZ, Arely V., SIMPSON, June, CLENCH, Malcolm
<<http://orcid.org/0000-0002-0798-831X>>, GOMEZ-VARGAS, Alan D. and
ORDAZ-ORTIZ, José J.

Available from Sheffield Hallam University Research Archive (SHURA) at:

<http://shura.shu.ac.uk/28117/>

This document is the author deposited version. You are advised to consult the publisher's version if you wish to cite from it.

Published version

PÉREZ-LÓPEZ, Arely V., SIMPSON, June, CLENCH, Malcolm, GOMEZ-VARGAS, Alan D. and ORDAZ-ORTIZ, José J. (2021). Localization and Composition of Fructans in Stem and Rhizome of *Agave tequilana* Weber var. azul. *Frontiers in Plant Science*, 11, p. 608850.

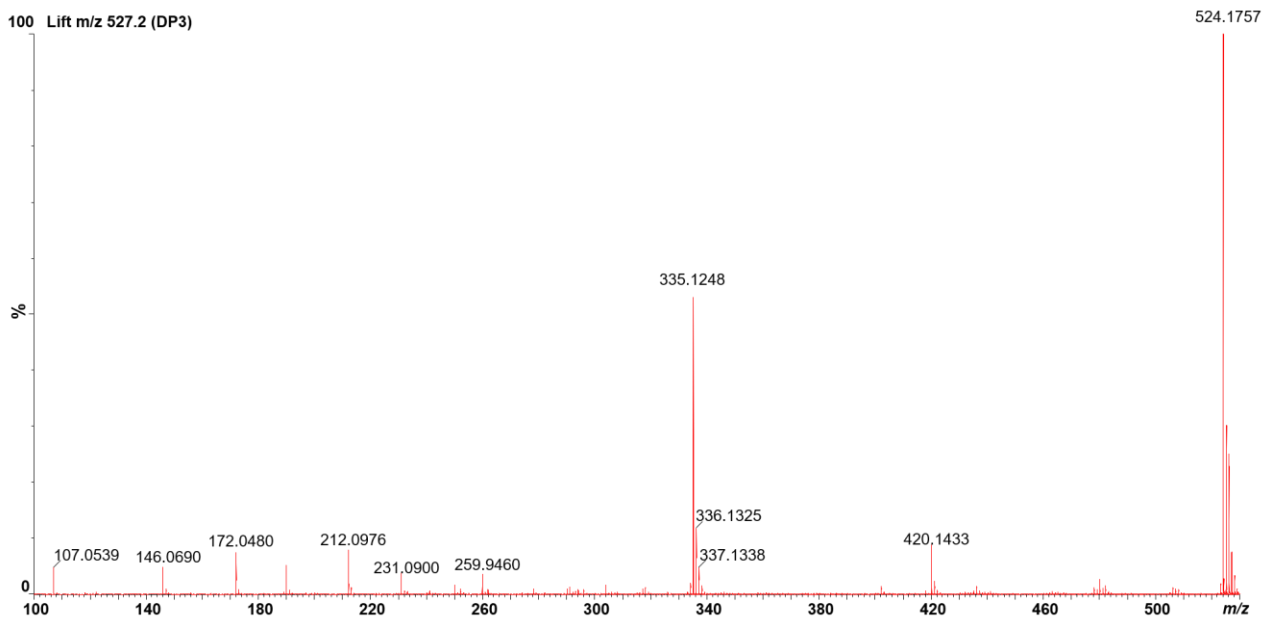
Copyright and re-use policy

See <http://shura.shu.ac.uk/information.html>

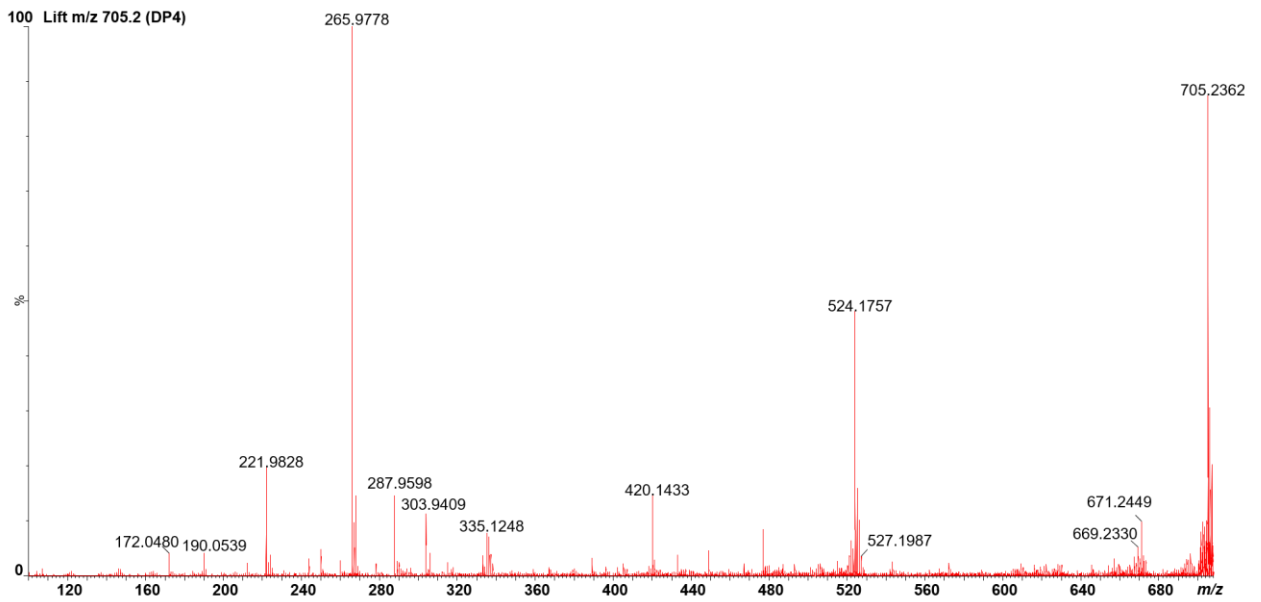
Detected fragment ions in MSMS fragmentation of fructans from DP3 to DP18

Fructan DP	Formula	Monoisotopic Mass M	<i>m/z</i>			
			M [+Na]	M [+K]	M-H2O [+Na]	M-H2O [+K]
n.d.	C ₇ H ₁₂ O ₇	208,0583	231,0481	247,022	213,0375	229,0114
n.d.	C ₈ H ₁₃ O ₇	221,0661	244,0559	260,0298	226,0453	242,0192
n.d.	C ₁₀ H ₁₁ O ₆	227,0556	250,0454	266,0193	232,0348	248,0087
n.d.	C ₈ H ₁₃ O ₈	237,0610	260,0508	276,0247	242,0402	258,0141
n.d.	C ₉ H ₁₄ O ₉	266,0638	303,0692	319,0431	285,0586	301,0325
n.d.	C ₁₀ H ₁₆ O ₉	280,0794	289,0536	305,0275	271,043	287,0169
n.d.	C ₁₀ H ₁₆ O ₅	296,0743	319,0641	335,038	301,0535	317,0274
n.d.	C ₁₂ H ₂₂ O ₁₁	342,1162	365,1060	381,0799	347,0954	363,0693
n.d.	C ₁₄ H ₂₁ O ₁₂	381,1033	404,0931	420,067	386,0825	402,0564
DP3	C ₁₈ H ₃₂ O ₁₆	504,1690	527,1588	543,1327	509,1482	525,1221
DP4	C ₂₄ H ₄₂ O ₂₁	666,2219	689,2117	705,1856	671,2011	687,175
DP5	C ₃₀ H ₅₂ O ₂₆	828,2747	851,2645	867,2384	833,2539	849,2278
DP6	C ₃₆ H ₆₂ O ₃₁	990,3275	1013,3173	1029,2912	995,3067	1011,2806
DP7	C ₄₂ H ₇₂ O ₃₆	1152,3800	1175,3698	1191,3437	1157,3592	1173,3331
DP8	C ₄₈ H ₈₂ O ₄₁	1314,4330	1337,4228	1353,3967	1319,4122	1335,3861
DP9	C ₅₄ H ₉₂ O ₄₆	1476,4860	1499,4758	1515,4497	1481,4652	1497,4391
DP10	C ₆₀ H ₁₀₂ O ₅₁	1638,54	1661,5298	1677,5037	1643,5192	1659,4931
DP11	C ₆₆ H ₁₁₂ O ₅₆	1800,5916	1823,5814	1839,5553	1805,5708	1821,5447
DP12	C ₇₂ H ₁₂₂ O ₆₁	1962,6444	1985,6342	2001,6081	1967,6236	1983,5975
DP13	C ₇₈ H ₁₃₂ O ₆₆	2124,6973	2147,6871	2163,661	2129,6765	2145,6504
DP14	C ₈₄ H ₁₄₂ O ₇₁	2286,7501	2309,7399	2325,7138	2291,7293	2307,7032
DP15	C ₉₀ H ₁₅₂ O ₇₆	2448,8029	2471,7927	2487,7666	2453,7821	2469,756
DP16	C ₉₆ H ₁₆₂ O ₈₁	2610,8557	2633,8455	2649,8194	2615,8349	2631,8088
DP17	C ₁₀₂ H ₁₇₂ O ₈₆	2772,9086	2795,8984	2811,8723	2777,8878	2793,8617
DP18	C ₁₀₈ H ₁₈₂ O ₉₁	2934,9614	2957,9512	2973,9251	2939,9406	2955,9145

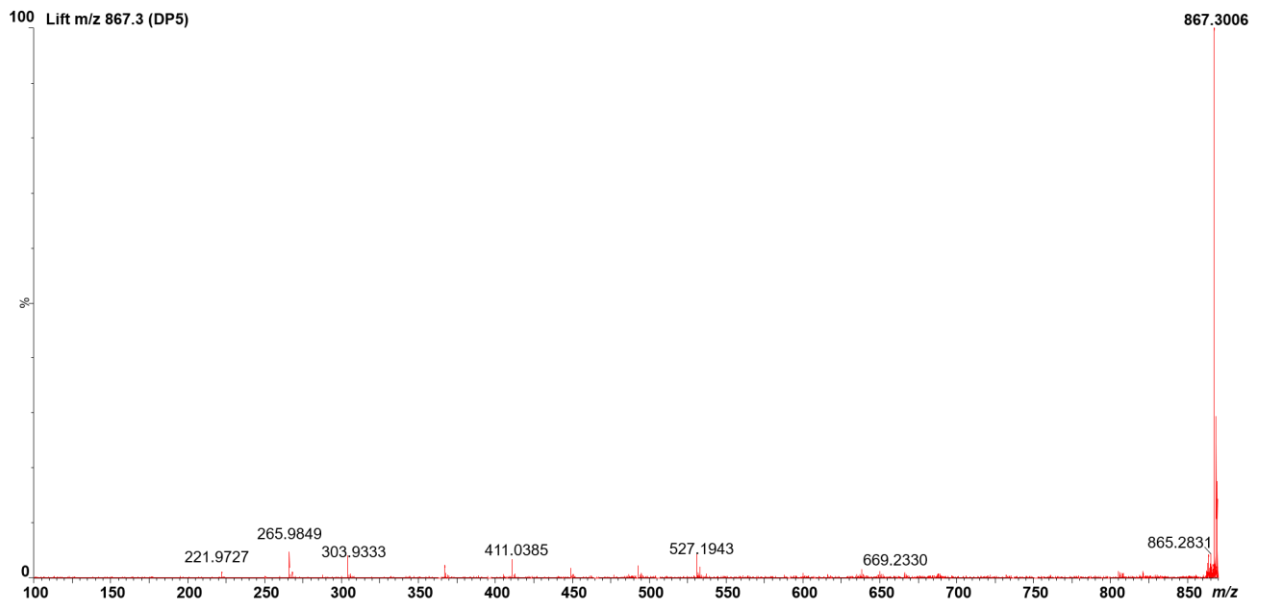
Tandem mass spectrum MS² of DP3 ion over a spotted extract of agave stem.



Tandem mass spectrum MS² of DP4 ion over a spotted extract of agave stem.



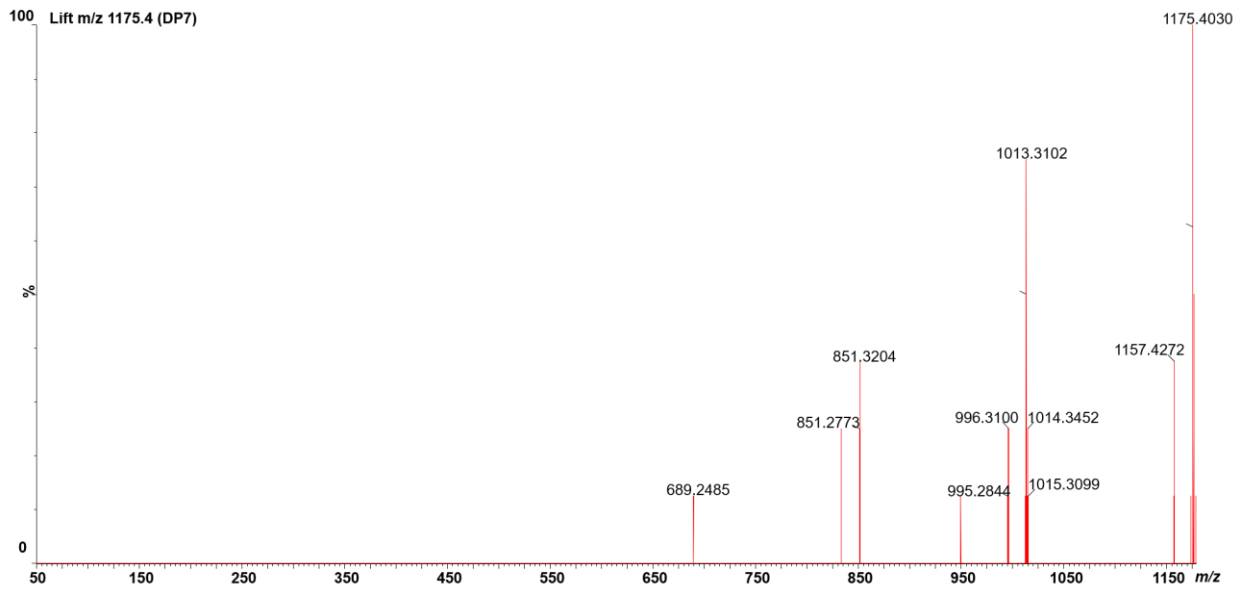
Tandem mass spectrum MS² of DP5 ion over a spotted extract of agave stem.



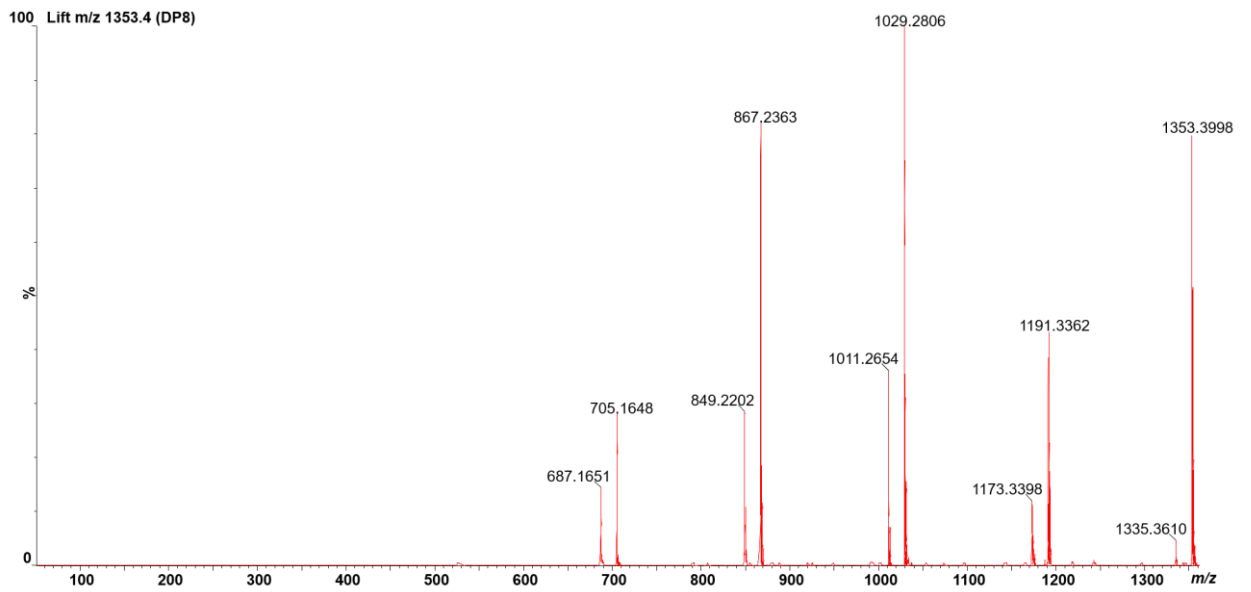
Tandem mass spectrum MS² of DP6 ion over a spotted extract of agave stem.



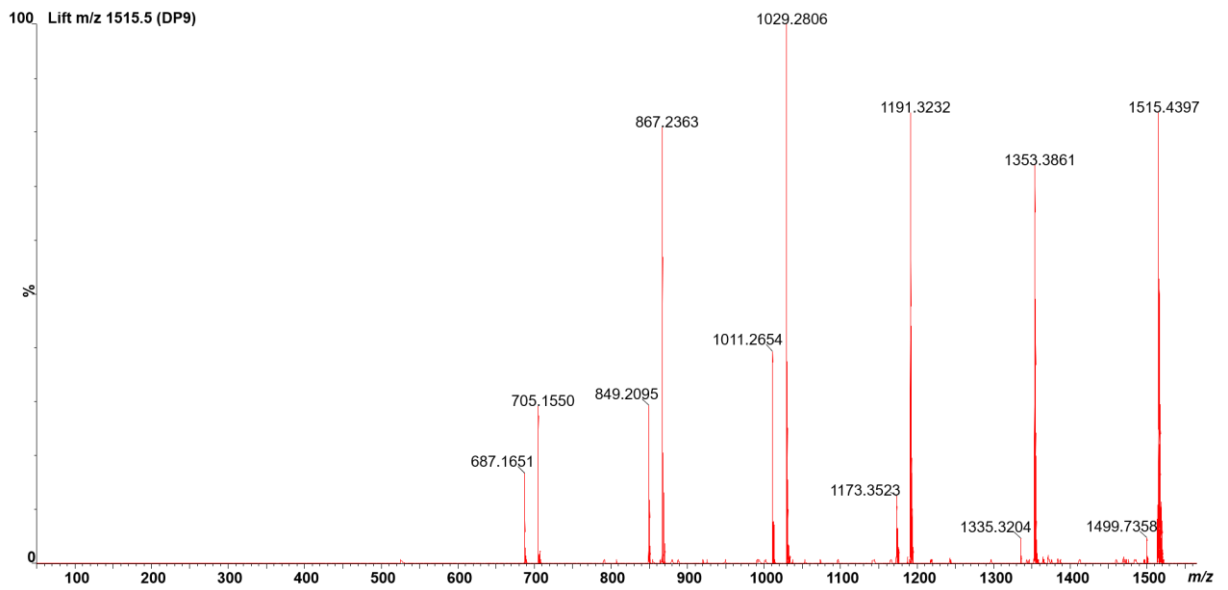
Tandem mass spectrum MS² of DP7 ion over a spotted extract of agave stem.



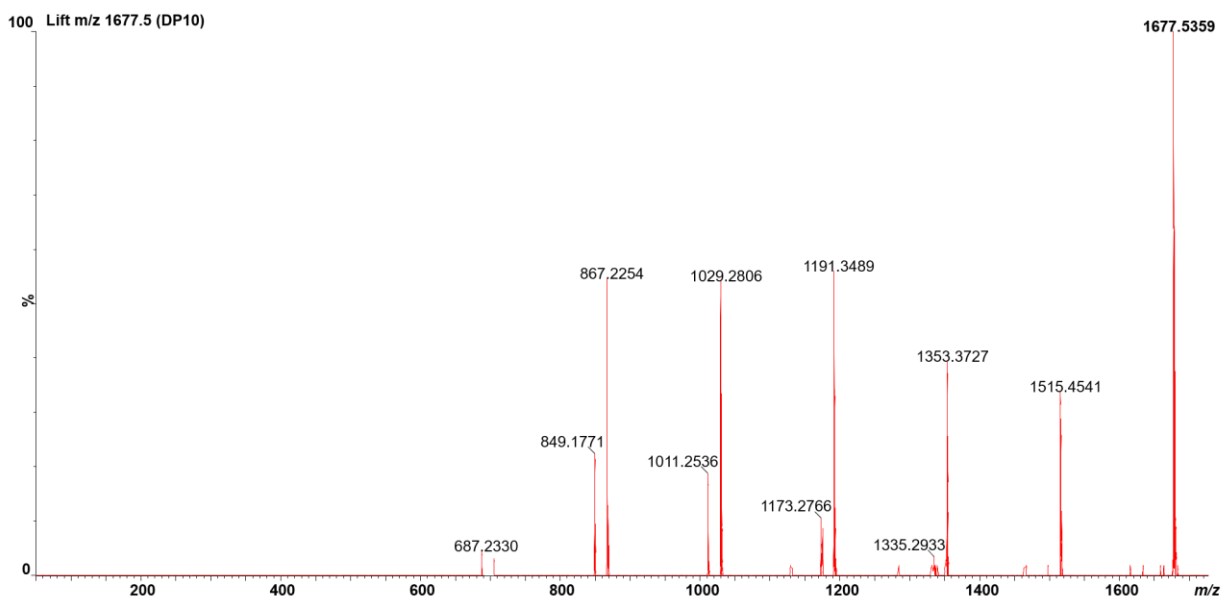
Tandem mass spectrum MS² of DP8 ion over a spotted extract of agave stem.



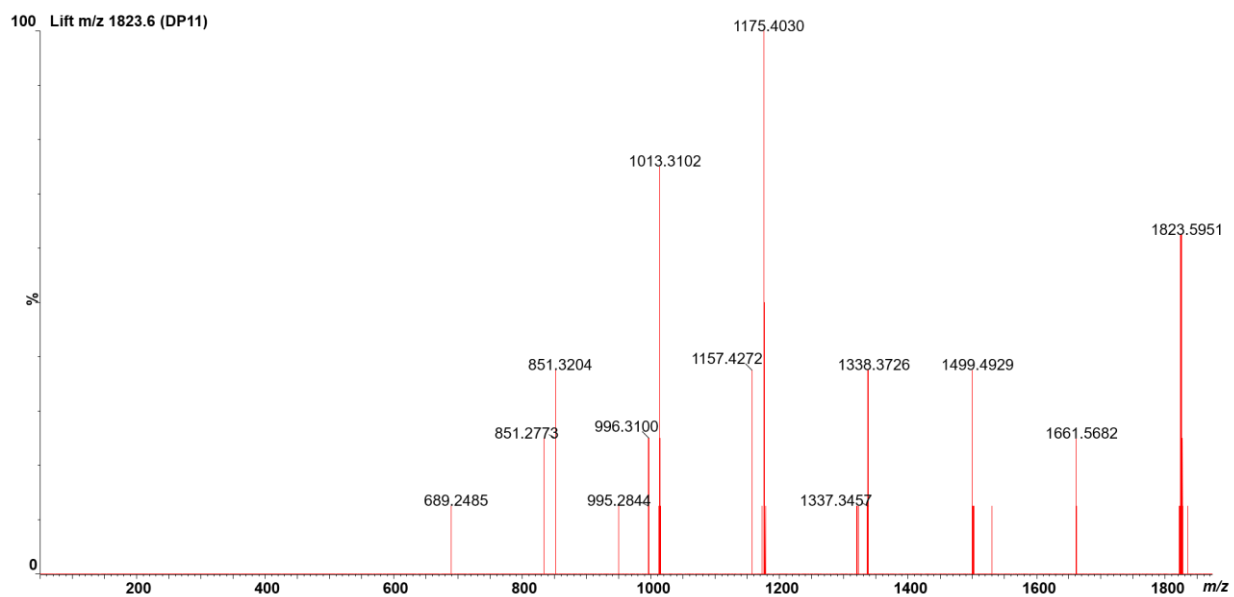
Tandem mass spectrum MS² of DP9 ion over a spotted extract of agave stem.



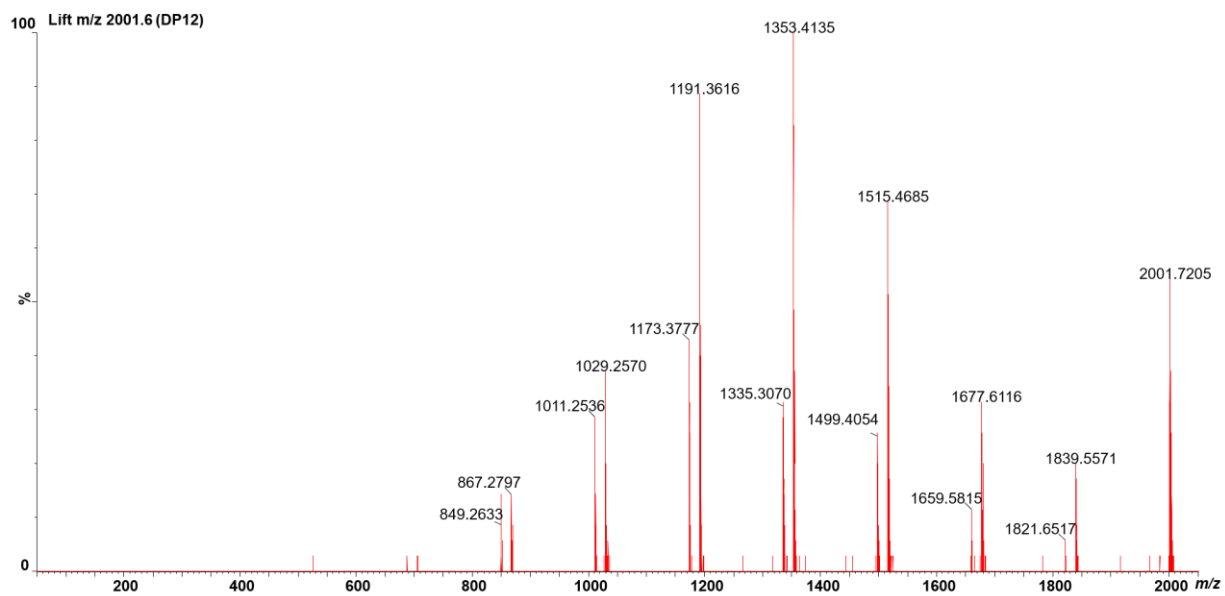
Tandem mass spectrum MS² of DP10 ion over a spotted extract of agave stem.



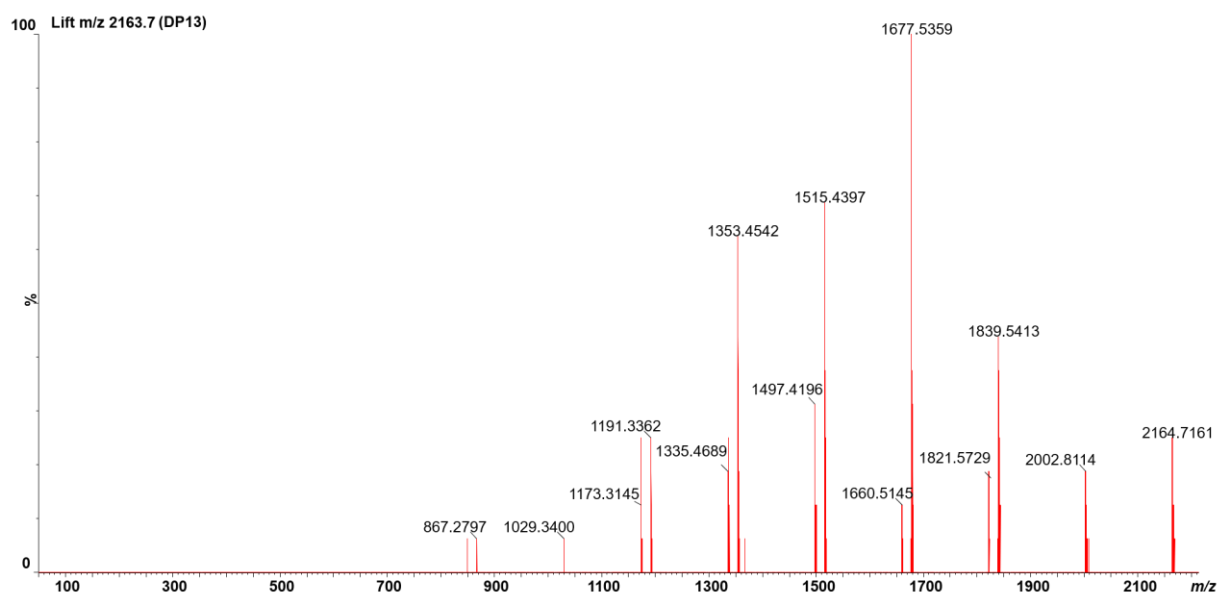
Tandem mass spectrum MS² of DP11 ion over a spotted extract of agave stem.



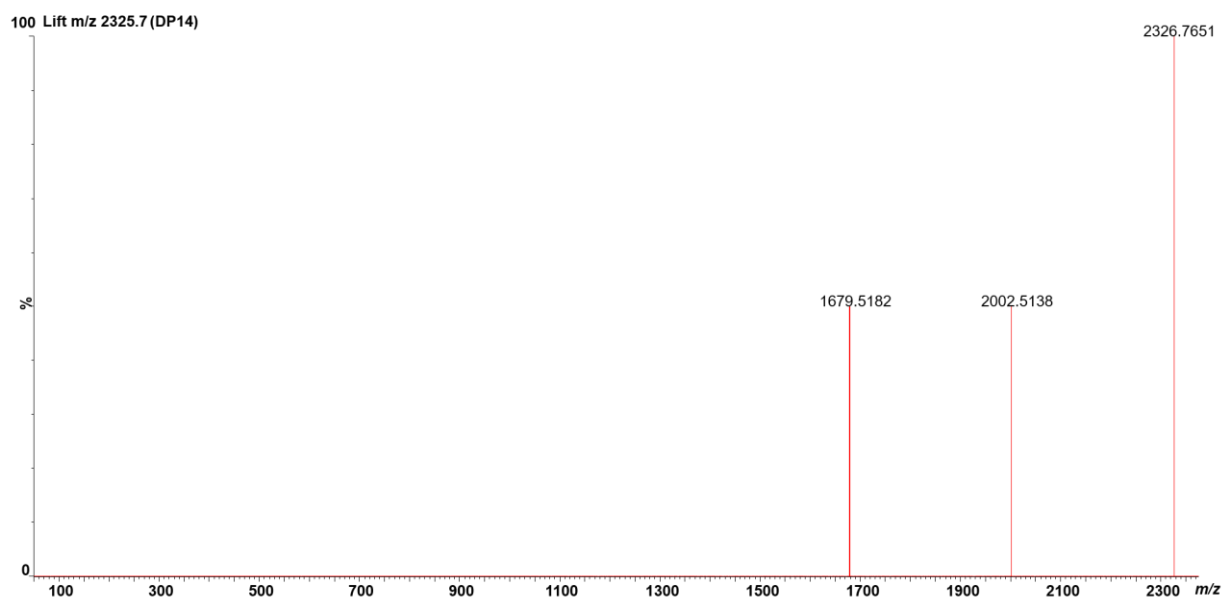
Tandem mass spectrum MS² of DP12 ion over a spotted extract of agave stem.



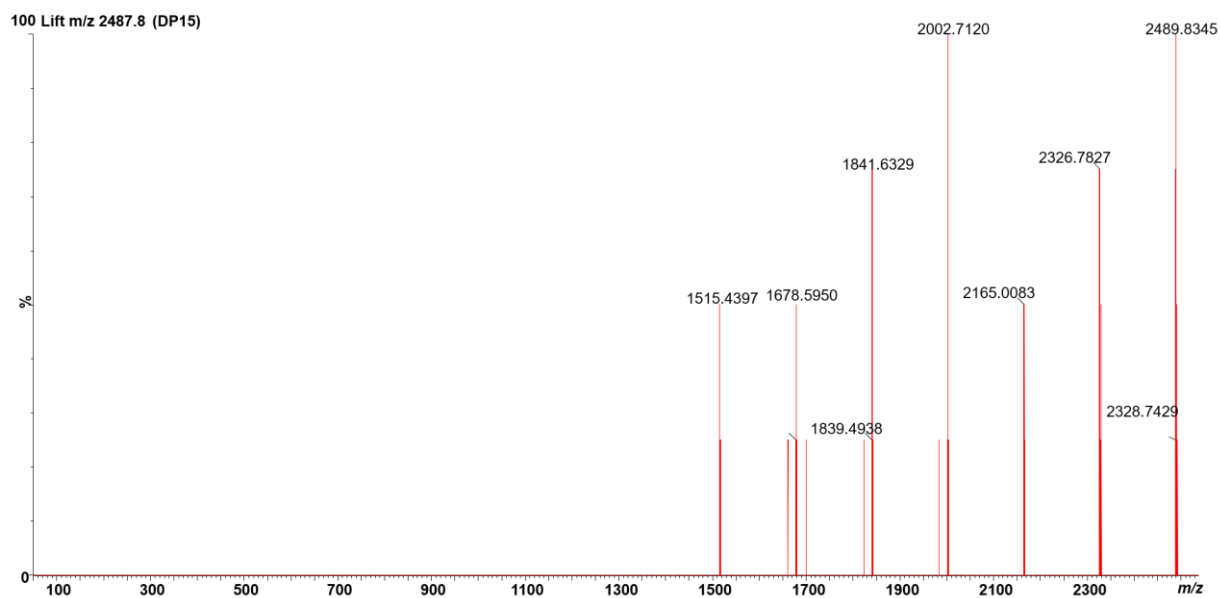
Tandem mass spectrum MS² of DP13 ion over a spotted extract of agave stem.



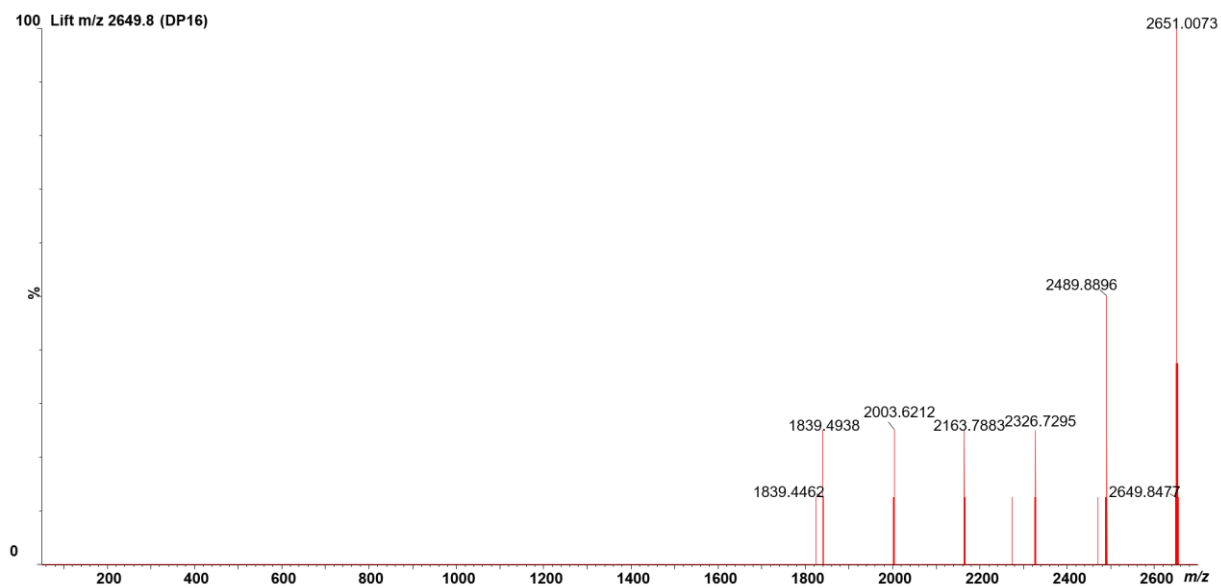
Tandem mass spectrum MS² of DP14 ion over a spotted extract of agave stem.



Tandem mass spectrum MS² of DP15 ion over a spotted extract of agave stem.



Tandem mass spectrum MS² of DP16 ion over a spotted extract of agave stem.



Tandem mass spectrum MS² of DP17 ion over a spotted extract of agave stem.



Tandem mass spectrum MS² of DP18 ion over a spotted extract of agave stem.

