

Innovation through degree apprenticeships- from c

MOSS, Conor

Available from Sheffield Hallam University Research Archive (SHURA) at:

<http://shura.shu.ac.uk/28026/>

This document is the author deposited version. You are advised to consult the publisher's version if you wish to cite from it.

Published version

MOSS, Conor (2020). Innovation through degree apprenticeships- from c. In: Degree Apprenticeships - Innovation and Change, London, 05 Feb 2020. UUK. (Unpublished)

Copyright and re-use policy

See <http://shura.shu.ac.uk/information.html>

SHU's Apprenticeship Journey - Towards Innovation through Chaos

Conor Moss

Dean of Work-Based Learning &
Group Director Business, Skills
and Employability



***“Innovations rarely emerge from systems with high degrees of order and stability”
(Pascale et al 2000)***

What's available?

Leadership & Management

- Operations/Departmental Mgr
- Chartered Manager
- Senior Leader
- Supply Chain Leader

Digital & Technology

- Digital & Technology Solutions Specialist - Software Engineer
- Digital & Technology Solutions Professional
 - Software Engineer
 - Business Analyst
 - Cyber Security Analyst
 - Data Analyst
 - IT Consultant
 - Network Engineer

Food & Drink Sectors

- Food Technologist
- Food Engineering
- Packaging Professional

Academic Professional

Building & Surveying

- Quantity Surveyor
- Building Surveyor
- Commercial Property / Valuation Surveyor
- Chartered Town Planner
- Construction Site Supervisor & Manager
- Architect

Engineering

- Mechanical
- Electrical
- Manufacturing
- Materials
- Rail Engineering

Health & Social Care

- Health and Social Care
- Social Worker
- Occupational Therapy
- Physiotherapy
- Healthcare Science Practitioner

Under development (subject to approval)

- Radiography
- Paramedic Practice
- Police Constable
- PG Engineering
- Advanced Clinical Practitioner

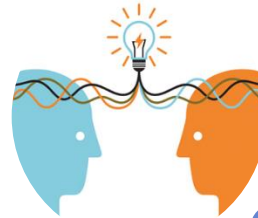
The apprenticeship journey- Stages of organisational adoption



Blind Optimism



Rising Awareness



Growing understanding
and ownership



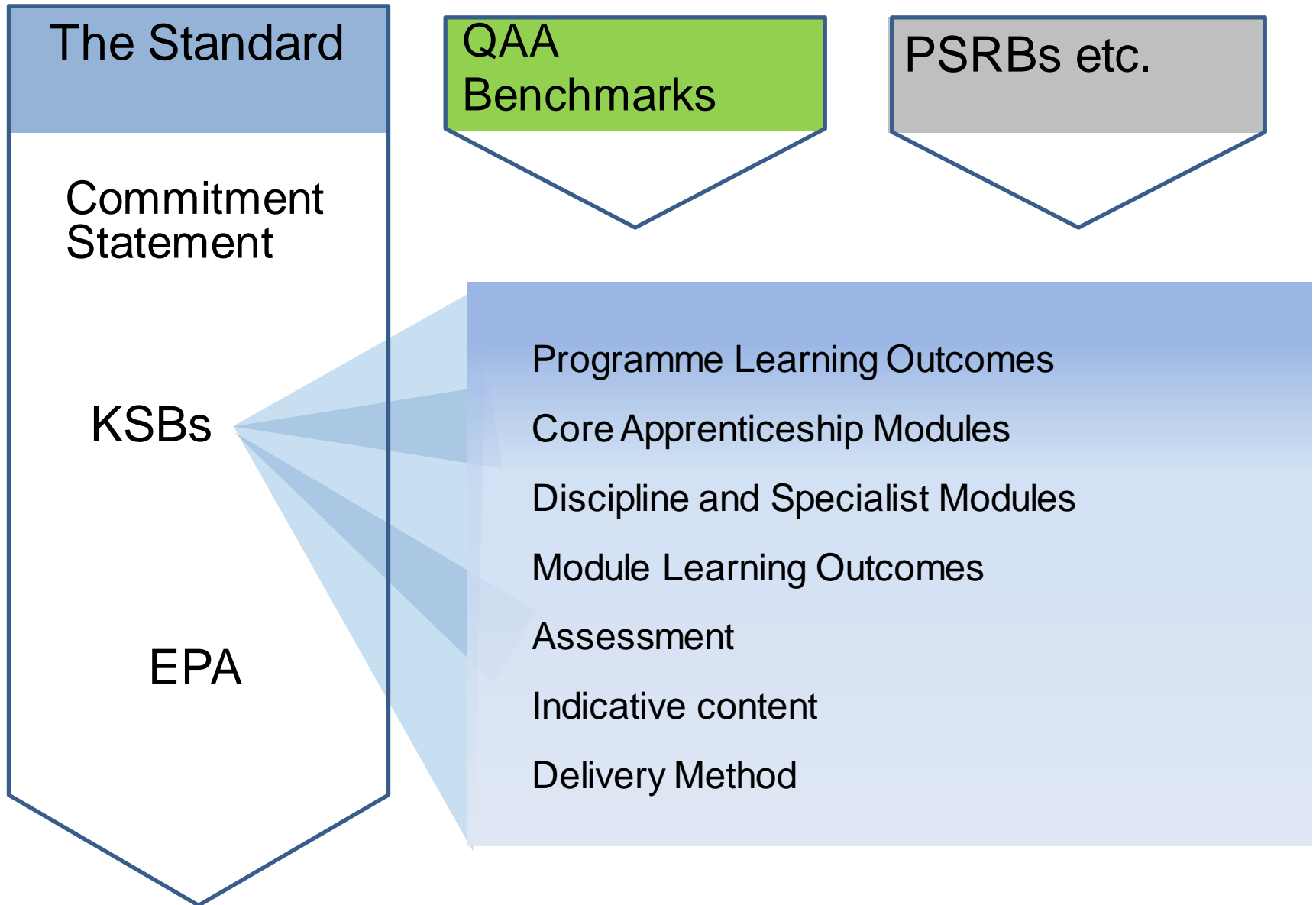
Mainstreaming & BaU



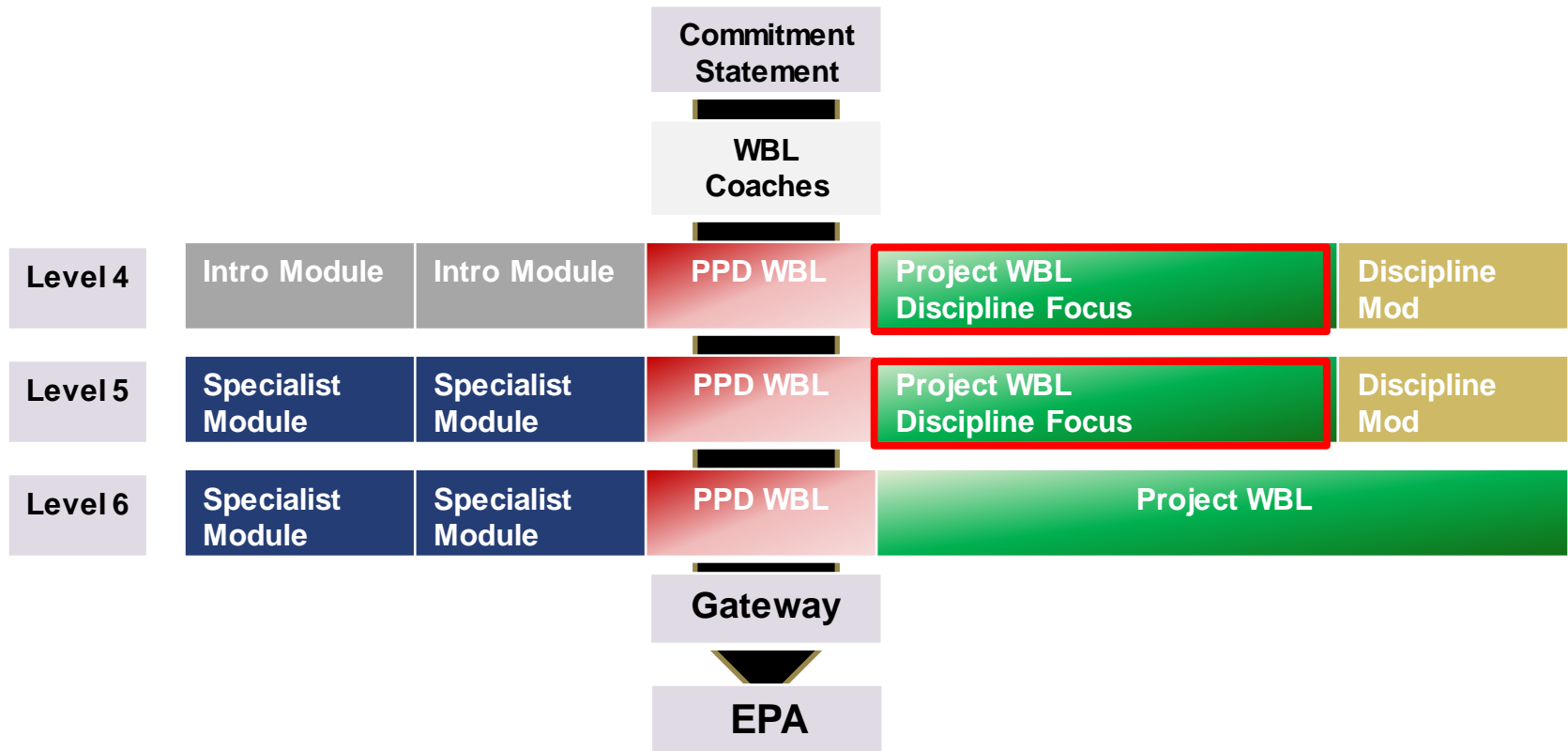
Innovation through Design

Apprenticeship Work-Based
Learning Framework

SHU Apprenticeship Design



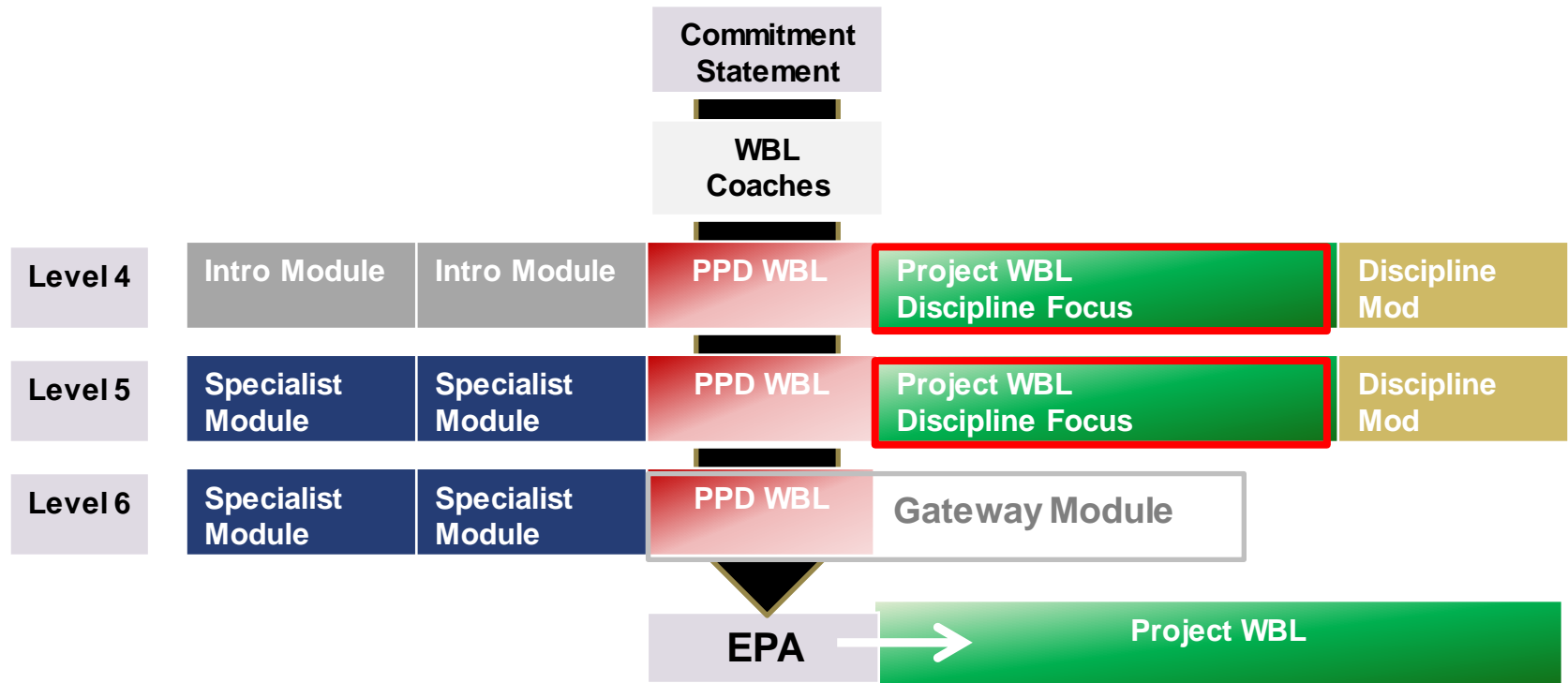
Apprenticeship Work-Based Learning Framework



Nb. Each award is design to meet the Apprenticeship Standard and so the structure of the course and support offer will vary

PPD = Personal and Professional Development

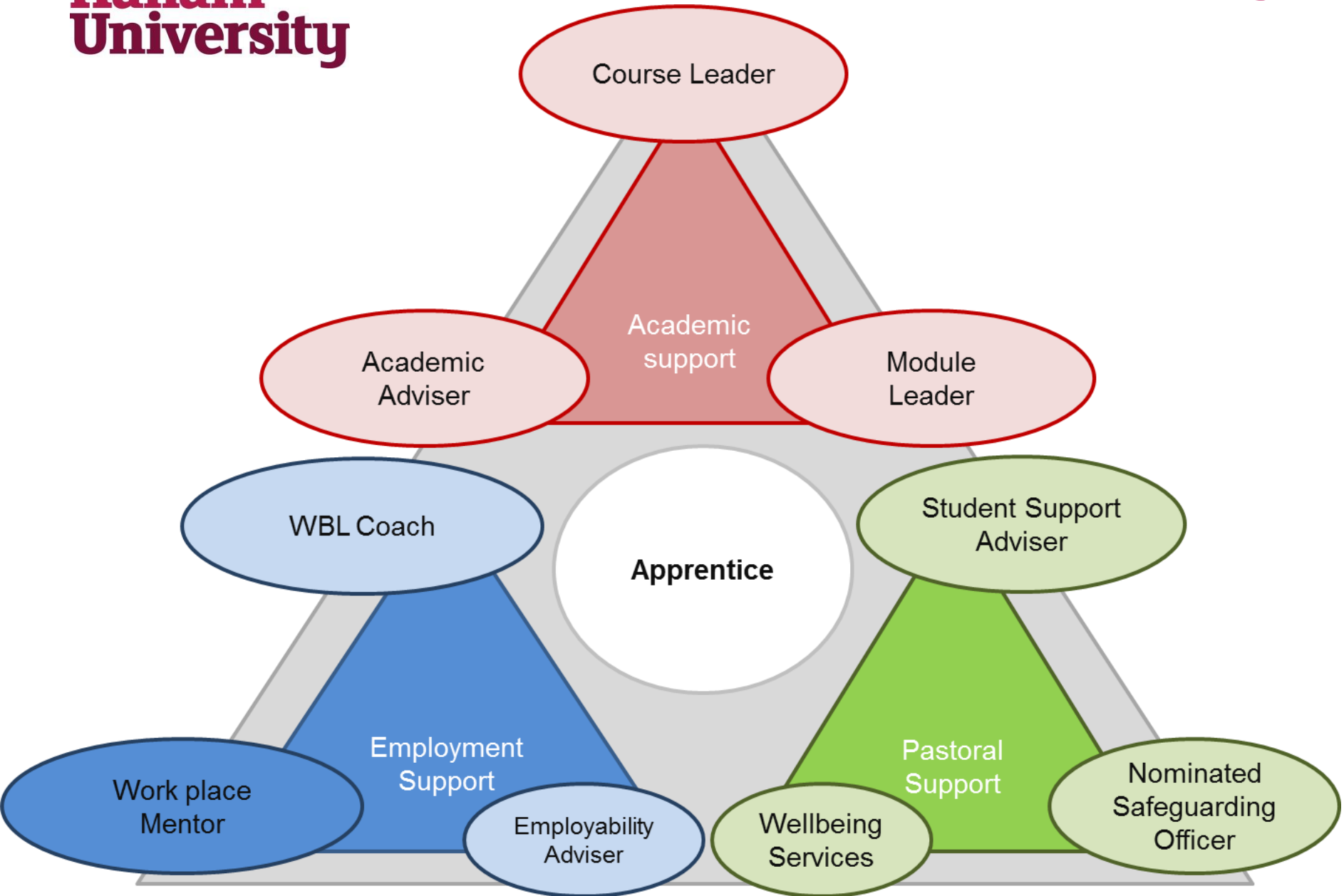
*Apprenticeship Work-Based Learning
Framework
(Integrated EPA)*



Nb. Each award is design to meet the Apprenticeship Standard and so the structure of the course and support offer will vary

PPD = Personal and Professional Development

SHU Apprenticeship Support Triangle



Innovation through Delivery

Work-Based Learning Coaches



Work-Based Learning Coaches



- Supporting the quality and efficiency of our Apprenticeship portfolio
- Works with colleagues in departments to support sector-focussed programmes
- Pre-join suitability interview: skills scan; career discussion - Is this the right programme?
- The Skills Scan informs the starting position - Feeds PPD module and Review 1
- Manage Progress Reviews - quarterly three-way discussions to support and plan
- E-Portfolios: Focus on evidence of impact, targets for EPA and development
- Negotiation, planning and monitoring of WBL Projects
- Help employers to understand and meet their obligations
- Feedback into academic practise and workplace impact

Work-Based Learning Coaches

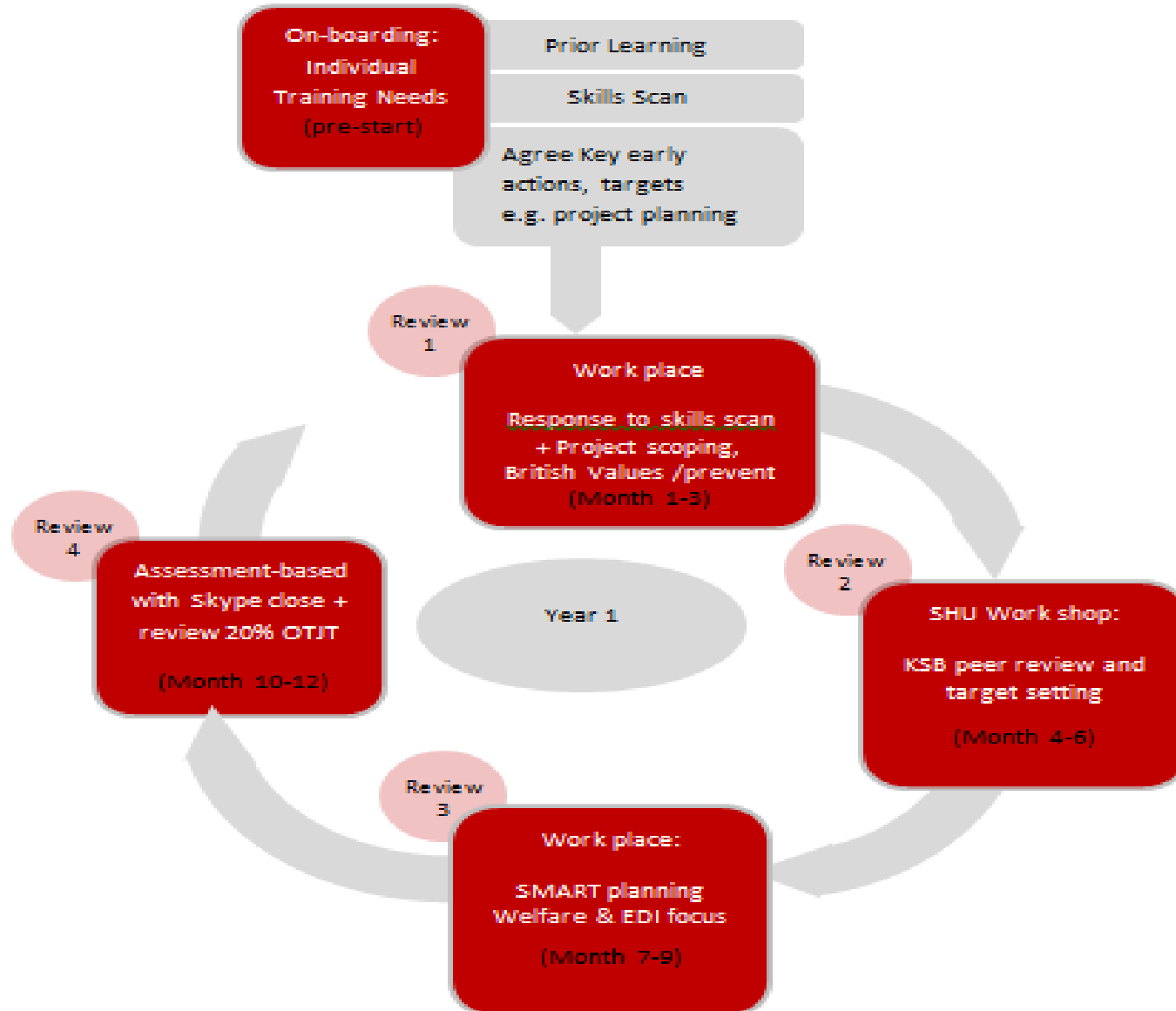
- **Every Apprentice is entitled to support from the employer and University.**

Coaches ensure:

- ✓ planning for and monitoring 20% off the job learning
- ✓ appropriately challenging targets (individualised SMART action plans).
- ✓ linking up to careers advice in the employer and SHU
- ✓ welfare support, including attendance, safeguarding, staying safe online - referrals
- ✓ opportunity for literacy and numeracy development
- ✓ engagement with British Values, Prevent, Equality Diversity & Inclusion



Review Cycle



Maryum Mirza



Degree Apprentice

***Digital and
Technology Services***

Wipro