

**Effects of canopy gap size on the regeneration of Scots pine (*Pinus sylvestris* L.) in Eskişehir-Çatacık region of Turkey**

ÇOBAN, Süleyman, ÇOLAK, Alper, ROTHERHAM, Ian <<http://orcid.org/0000-0003-2903-5760>>, ÖZALP, Gülen and ÇALIŞKAN, Adil

Available from Sheffield Hallam University Research Archive (SHURA) at:

<http://shura.shu.ac.uk/23258/>

---

This document is the author deposited version. You are advised to consult the publisher's version if you wish to cite from it.

**Published version**

ÇOBAN, Süleyman, ÇOLAK, Alper, ROTHERHAM, Ian, ÖZALP, Gülen and ÇALIŞKAN, Adil (2018). Effects of canopy gap size on the regeneration of Scots pine (*Pinus sylvestris* L.) in Eskişehir-Çatacık region of Turkey. *Austrian Journal of Forest Science*, 2018 (3), 183-212.

---

**Copyright and re-use policy**

See <http://shura.shu.ac.uk/information.html>

**Effects of canopy gap size on the regeneration of Scots pine (*Pinus sylvestris* L.) in  
Eskişehir-Çatacik region of Turkey**

Süleyman Çoban<sup>1</sup>, Alper H. Çolak<sup>2\*</sup>, Ian D. Rotherham<sup>3</sup>, Gülen Özalp<sup>4</sup>, Adil Çalışkan<sup>5</sup>

<sup>1-2-4-5</sup>Istanbul University, Faculty of Forestry, Department of Silviculture, Turkey

<sup>3</sup>Sheffield Hallam University, Geography, Tourism and Environment Research Unit, UK

\* Corresponding author: Tel: +902123382400; E-mail: [alpere@istanbul.edu.tr](mailto:alpere@istanbul.edu.tr)

**Abstract**

The study was undertaken in Scots pine shelterwood forests in central Anatolia at the edge of the Eurasian distribution of Scots pine and thus adding significance in terms of understanding the ecology of this important species. Canopy gap size and the position of the sapling within the regeneration cores were chosen within 9 different strip-sample plots comprising 20 sapling regeneration cores. Those sapling regeneration cores under the gaps were divided into two portions (individuals at the edge and middle of the regeneration cores) and from each portion three individuals were selected. The growth relationships of individual saplings within the regeneration cores were determined from the age-height graph of 95 sapling-stem analyses. Gap-size classes that compromise a gap size gradient were chosen: small gaps (< 20 m<sup>2</sup>); intermediate gaps (20 - 177 m<sup>2</sup>); large gaps (178 - 707 m<sup>2</sup>). Spatial structure of mature trees were determined using the Clark-Evans index. In addition, differentiation index (diameter, height, crown length, and crown radius) were calculated for each stand projections.

Gaps with sapling regeneration cores ranged from 15 to 240 m<sup>2</sup>, with a mean of  $91.55 \pm 23.69$  m<sup>2</sup> by Student's t-test ( $p = 0.05$ ). The maximal gap-size classes were found in the intermediate (90%), followed by large (5%) and small (5%). Compared with saplings in the middle of regeneration cores, those at the edge were always reduced in terms of mean height. Significant difference was found between the 'Main crop' and the 'Edges 1-2' of the regeneration cores. There was no significant difference for sapling age in regeneration cores. Fraction of land area in gap regeneration cores was found between 20 and 66% of total stand area. The age-height graph of 95

1    sapling-stems derived from stem analyses showed that the saplings grow very well without any  
2    obvious deceleration in the gaps.

3    These findings can further inform forest managers about how to optimize growth of sapling by  
4    means of canopy gap regulation. The results are discussed in the context of future silvicultural  
5    modelling and new ways of assessing forest regeneration dynamics when gap-regeneration is  
6    important.

7    **Keywords:** Canopy gaps size; gap-based silvicultur; gap regeneration; sapling growth

## 1    **Introduction**

2  
3    When one or a few canopy trees die (or are injured) in a forest mainly because of natural  
4    disturbance, small openings, which are called 'gaps' are formed in the forest canopy and are then  
5    filled by other trees. This phenomenon is defined as 'gap dynamics'. Many forest scientists and  
6    ecologists have been attracted to gap dynamics, because gap dynamics is closely related with  
7    practical forest applications (e.g., forest conservation practice, natural regeneration method) as well  
8    as basic ecological theories (e.g., niche partitioning, species adaptation, latitudinal gradient of  
9    species diversity) (Yamamoto 2000). Holeksa & Cybulski (2001) stated that gaps smaller than  
10    100m<sup>2</sup> are typical structural elements of forests in the western Carpathian Mountains and they  
11    comprise 34% of the forest area. For this reason, in studies on forest disturbance regimes,  
12    measuring gap size is an important issue (Runkle 1982; de Lima 2005), and gap area is a good  
13    index with which to characterize light entrance and resource availability (de Lima 2005).

14    Understanding the interrelations between gap size and environmental change, and their effects on  
15    regeneration processes is a prerequisite for developing techniques of nature-based forestry (Gálhidy  
16    et al. 2006). When gaps are formed in a forest canopy, growth of advance regeneration (regenerated  
17    in gaps from seedlings or saplings recruited before gap formation) within gaps is promoted and/or  
18    new seedlings colonize into gaps. Seedlings of shade-intolerant species can establish in larger gaps,  
19    frequently with exposed mineral soils, while in smaller gaps advance regeneration of shade-tolerant  
20    species is dominant. Like these, the pattern of tree regeneration in gaps varies among constituent  
21    species in the gap-regenerating forests (Yamamoto 2000). The basal area of the different species in  
22    the canopy is an indirect measure of the understory micro-environment that affects seedbed  
23    conditions, light, understory composition, and other biotic and abiotic factors that directly  
24    determine the potential for the establishment of advance regeneration (Çoban et al. 2016). A local  
25    measure of basal area may therefore give an estimate of canopy cover (Jennings et al. 1999). In  
26    addition, position of the seedling beneath the canopy gap (i.e., in the centre of the gap or close to  
27    mature trees) also influence seedling survival (Çoban et al. 2016).

1 Although forest ecologists and silviculturalists have emphasized the importance of creating gaps to  
2 generate spatial variation in order to promote tree regeneration, the effects of gap on seedling  
3 recruitment may be offset by the development of dense forest understoreys. This limits  
4 regeneration even in gap conditions, and reduces the effectiveness of gaps (Beckage et al. 2005;  
5 Ruuska et al. 2008). Understanding the behaviour of the seedlings of different tree species in  
6 relation to canopy shade is therefore important (Çoban et al. 2016).

7 There is an abundant literature on the factors affecting natural regeneration in Scots pine forests.  
8 Scots pine seed trees have an effect on the structure of pine seedlings (i.e. morphological  
9 characteristics), their spatial pattern, and their size distribution (Kuuluvainen 1994; Valkonen et al.  
10 2002; Castro et al. 2004; Zagidullina & Tikhodeyeva 2006). Both height and seedling density  
11 decrease close to the parent trees (Siipilehto 2006). Competition from the mother trees inhibits  
12 development of saplings in close proximity (Montes and Canellas, 2007). However, the growth of  
13 naturally occurring saplings in response to variations in canopy cover density of Scots pine stands  
14 are poorly studied in the southern zone of its distribution area (Kuuluvainen et al. 1993; Cameron  
15 & Ives 1997; Beckage et al. 2005; Andrzejczyk 2007; Löf et al. 2007). Studies on regeneration and  
16 advance growth have shown that the effects of the long-term retention of seed trees has a strong  
17 negative impact on the development of young Scots pine stands, especially on relatively infertile  
18 sites in the northern areas of its natural distribution (Ruuska et al. 2008). However, the relationship  
19 between sapling height development and the position within gap regeneration cores is not known for  
20 semi-arid site conditions.

21 The aims of this study were 1) to determine the growth characteristics of the sapling affected by the  
22 position within the regeneration cores, 2) to predict the most appropriate gap-size classes for the  
23 development of regeneration cores of shade-intolerant Scots pine saplings, 3) to consider whether  
24 responses vary with the shade-tolerance variation of Scots pine saplings.

# Materials and Methods

## Site description

Much of current knowledge of tree-canopy development is based on studies of trees occurring in naturally-regenerated forest communities (Ellenberg 1996). This research was therefore undertaken in a naturally-regenerated Scots pine forest in Çatacık (Eskişehir) in the northwest of Turkey (Figure 1: latitude between 39°57' and 39°58' N, longitude between 31°06' and 31°08' E) which is characterised by a high degree of naturalness (Çolak et al. 2003). The research area is typically covered by Scots pine stands of between 110 years and 140 years in age, located between 1,517 m and 1,607 m altitude on the northern slopes (inclination 5° to 19°) of the Sündiken Mountains. Stands have densities of between 118 and 360 trees ha<sup>-1</sup> and basal areas between 18.1 and 40.3 m<sup>2</sup> (see Table 5 for the detailed stand structural characteristics). Silviculture in the area is based on natural regeneration following a shelterwood system and silvicultural interventions are infrequent during the early stages of development.

The climate of the Çatacık region (1,550 m) is classified as B3C'2 sb'2 by the Thornthwaite climate classification system which translates as characterised by humid, micro-thermal (cold climate types), moderate summer water deficiency, and close to oceanic climate types. Summer water deficiency occurs from August to October (Boydak 1977), and the Çatacık subalpine Scots pine forest develops in harsh mountain environments with low temperatures, strong winds, and abundant snowfall. Furthermore, the study area is situated in Scots pine (*Pinus sylvestris* L.) shelterwood forests in a pine site typical of the area, and at the border between Mediterranean evergreen forests, temperate deciduous broadleaf forests, and steppe/grasslands (according to Whittaker's biome classification) (Figure 1).

## Gradients and measurements of Gap Size

Runkle (1982) defined gaps as the land surface directly under the canopy opening containing young trees up to 10 m high. The 10-m cut-off is slightly less than half the average height of canopy trees

(Holeksa and Cybulski, 2001). In this study, a canopy gap was defined as the ground area under a canopy-opening with sapling regeneration cores which extend to the bases of canopy trees surrounding the canopy-opening (modified from Runkle (1982)).

Gap classes were measured and presented in square metres (m<sup>2</sup>) since gap shape varies greatly and the gap size classes of Çoban et al. (2016) presenting a gap-size gradient were chosen. The Scots pine stands were allocated into 1 of 3 different gap sizes (Small, intermediate and large gaps) distinguished by gap size gradients in the shelterwood. These three gap size gradients are as follows (Çoban et al. 2016):

1) Small gaps with a diameter of < 5 m (<20 m<sup>2</sup>);

2) Intermediate gaps with a diameter of 5 to 15 m (20 to 177 m<sup>2</sup>);

3) Large gaps with a diameter of 15 to 30 (178 to 707 m<sup>2</sup>).

Measures of gaps with sapling regeneration cores assess the presence or absence of canopy vertically above a sample of points across an area of forest by the vertical projection of the tree crowns. Gaps under a canopy opening with sapling regeneration cores were calculated from horizontal projection in the stand projection (10 m x 50 m) on the millimetric graph paper in square metres. As it was also found by Çoban et al. (2016), average diameter of regeneration cores did not exceed 8-10 m. In order to determine the relation between stand structure and regeneration cores, horizontal stand projections were laid to cover regeneration cores. In addition, gap sizes were also measured out from stand projection when it exceeded horizontal projection. Since all of the regeneration cores except those under large gaps were included in the stand projection, the width of the stand projection was not increased.

Gaps were taken to become indistinguishable from the background overstory when regeneration within the gap has young trees of 10 m or more in height. All individuals taller than 1 m within gaps are referred to as saplings (Runkle 1981).

### **Selection of sample plots and field procedures**

Shelterwood cutting areas in the Scots pine stands of 110 to 140 years-old had uniform levels of shade resulting from regular thinning and felling. Gaps in these stands were assessed and placed

into different gap size gradients. Samples were separated depending on typical sapling regeneration cores under different gap sizes within these stands. Sampling in the stands was conducted with a simple random sampling method. Measurements were taken for 9 rectangular (10 m x 50 m) sample plots with different gap size gradients and chosen from natural regeneration cores of Scots pine saplings. The standard alternative to gap sizes for the regeneration cores is by means of 'rectangular sample plots' (10 m x 50 m; Aksoy (1978)) and shows longitudinal (profile) and vertical projection of the stand. In each sample plot, diameter at breast height (DBH), height, living branch height, vertical projection of crowns and position of trees were recorded (Figure 2). Longitudinal (profile) and vertical projection of the stands were drawn using these data. Areas of regeneration cores were also drawn for sample plots (Figure 3).

#### **Analysis of regeneration cores in the gaps**

For the growth analysis, 11 most typical regeneration cores were randomly selected from sample plots. Typical regeneration cores were those which had a distinct height difference between edge and middle saplings and most were above 1.5 m. According to this criterion, only regeneration cores under intermediate gaps were chosen for further analysis.

From each of the edges three individuals were taken (six individuals in total from edges) and three individuals were taken from the middle (Figure 2). A total of 99 saplings were cut at ground level and their ages were estimated by ring counting. Among these saplings which are higher than 1.5 m were used in sapling-stem analysis (64 Edge saplings and 31 Main crop saplings). Those individuals at the edge of the natural sapling regeneration cores were selected as "Edge saplings" (Figure 2) of which at the lower side of the core was named as Edge 1 and upper side as Edge 2. The saplings were scored considering the height position (dominant/codominant/intermediate/suppressed) and damage (healthy/low damage/moderate damage/highly damaged) of individuals in regeneration cores: 1) "Main crop sapling" the highest score in both variables and 2) "Edge sapling" with the lowest score in both variables. The Main crop saplings were located in the middle of the typical natural sapling regeneration cores (Figure 2). The term "Main crop sapling", that is the trees selected to become a component of a future

commercial harvest, refers to those saplings with the highest score in both variables (dominant and healthy) (González-Martínez & Bravo 2001).

### **Sapling-stem analysis**

Sample saplings were cut down to ground level and stem cuts were taken at 1 m intervals for stem analysis (Atıcı 1998; Kalıpsız 1998; Atıcı 2003). In the stem analysis, ages at each cross-section were calculated from the differences in annual rings for the cross-sections to give sapling age. Then, the height-growth model which was firstly proposed by Prodan (1961) and used many authors (Akalp 1976; Asan 1984; Usta 1990; Erkan 1996; Özcan 2003; Özdemir 2005; Şenyurt 2005; Çatal 2009; Özdemir & Özdemir 2016; Özdemir & Saraçoğlu 2016) was calculated (Eq. 1).

$$H = \frac{t^2}{a_0 + a_1 \times t + a_2 \times t^2} \text{ (Eq. 1)}$$

(*t*: years to reach cross-section height; *H*: Cross-section height (m); *a*<sub>0</sub>, *a*<sub>1</sub>, *a*<sub>2</sub>: equation coefficients).

### **Analysis of stand structure of sample plots**

The spatial distribution of mature trees was determined using the nearest-neighbour method in order to show its effect on regeneration cores. For this reason, the Clark-Evans index of clumping (CE) which is based on distances between individuals was used. This index is a measure of the extent to which the observed population differs from the randomly distributed one. A population distributed randomly shows CE = 1.0, while regularity can be assumed if CE > 1.0 and index CE < 1.0 indicates the clumped distribution of individuals (Clark & Evans 1954; Kint 2004; Szmyt 2014). In addition, the differentiation index which describes the degree of dissimilarity of sizes between neighbouring trees (i.e., diameter (TD), height (Th), crown length (TCL) and crown radius (TCr)) was calculated for all stand projections. This index has values varying between 0 (no differentiation) and 1 (complete differentiation) (Pommerening 2002). For 4 nearest neighbours the 5 differentiation classes can be applied (Aguirre et al. 2003; Kint 2004; Szmyt 2014)(Aguirre et al. 2003; Kint 2004; and Vorčák et al. 2008):

- 1) 0.0 - 0.20 (very small differentiation),

- 2) 0.20 - 0.40 (small differentiation),
- 3) 0.40 - 0.60 (clear differentiation),
- 4) 0.60 - 0.8 (large differentiation)
- 5) 0.80 - 1.00 (very large differentiation).

All of the parameters noted above were calculated using the SIAFOR program (Kint 2004).

## Data analysis

The following equation (Eq. 2) was used to calculate 95% confidence intervals of populations of all measured data (Sachs 1970; Kalıpsız 1981; Atıcı et al. 2008):

$$\mu = \bar{x} \pm tSE_{\bar{x}} \text{ (Eq. 2)}$$

Where  $\bar{x}$  is arithmetic mean;  $SE_{\bar{x}}$  is std. error;  $t$  is Student's  $t$  coefficient ( $t_{1-\alpha/2; n-1}$ ); for 8 degrees of freedom = 2.306,  $n$  is 9 number of samples.

Statistical evaluation including nonparametric test (Kruskal-Wallis H Test), One-way Variance Analyses (ANOVA) and  $t$ -tests were applied to the data using SPSS 21 software for Windows.

## Results

### The frequency distribution of natural sapling under different gap size gradients

Gaps with sapling regeneration cores ranged from 15 to 240 m<sup>2</sup>. Arithmetic mean of 95% confidence interval of total population ( $\mu$  value) by Student's  $t$ -test ( $p = 0.05$ ) is  $91.55 \pm 23.69$  m<sup>2</sup> (Table 1). The maximal gap size classes were found in the intermediate (90%), followed by large (5%) and small (5%) (Table 1 and 2). These differences were shown to be statistically significant ( $p < 0.001$ , Table 2) by the Kruskal-Wallis H test (Table 1). The results suggest that large (5%) and small (5%) were rare within gap size classes (Figure 3; Tables 1 and 2) and this was significant. This test was applied to the difference in the gap size gradients of regeneration cores. The situation was consistent in all sample plots with longitudinal (profile) and vertical projection of stands (Figure 3). The shapes of gap areas vary from elliptic to circular within Scots pine stands, which affects the micro-environment within a gap (Figure 3).

### The height growth of older sapling in regeneration cores

Compared with saplings in the middle of a regeneration core or cluster, those on the edge were always shorter with  $\mu$  value (Table 3). The differences in  $\mu$  value were found for Edge 1:  $1.576 \pm 0.269$  m; Main crop:  $2.998 \pm 0.472$  m; Edge 2:  $1.895 \pm 0.719$  m. Due to height differentiation between edges and Main crop, a regeneration core form develops (Table 3; Figure 3). The distribution of saplings in different height classes in the sapling regeneration cores revealed that they were shorter beneath the canopy than beyond the canopy (Figure 3). These were statistically significant between the Main crop and Edge 1 ( $t = 6.019$ ;  $p = 0.000$ ) and between the Main crop and Edge 2 ( $t = 0.752$ ;  $p = 0.009$ ) (Table 3). One-way Variance Analysis (ANOVA) was carried out to test the differences in sapling age between Main crop saplings and both Edge saplings in the regeneration cores. There was no significant difference (between the Main crop and Edge 1:  $F = 0.412$ ;  $p = 0.149$ ; between the Main crop and Edge 2:  $F = 0.005$ ;  $p = 0.440$ ) for sapling age in regeneration cores. These  $\mu$  values were found for Edge 1:  $12.48 \pm 3.59$  year; Main crop:  $16.29 \pm 4.54$  years; Edge 2:  $13.79 \pm 5.69$  years (Table 4; Figure 4).

#### **The growth of individual saplings in the regeneration cores**

Regeneration cores under small gaps do not show good development since most saplings are below 1.5 m height and unhealthy. On the other hand, there is not a distinct growth difference among saplings of large gaps.

The age-height graph of 95 sapling-stems derived from stems analyses showed that the saplings grow very well without any obvious deceleration in the intermediate gaps (Figure 5ab). According to the stem analysis of the saplings, there was a slow height growth increment at the early stages which increased after 10 years. For the 25 to 30-year-old saplings, an increment occurred even after 15 years. In addition, the height-growth rate of Edge saplings was lower than those of Main crop saplings. On the other hand, Main crop saplings had a higher height-growth performance under wide intermediate gaps (between 130 and 160 m<sup>2</sup>) compared to saplings under small intermediate gaps (60 and 105 m<sup>2</sup>) but Edge saplings did not show a clear difference between these gap sizes (Figure 4).

## **Stand structure characteristics of Scots pine stands with gap regeneration cores**

Canopy cover rates in the sampling plots ranged from 24% to 43%. The arithmetic mean of canopy cover rates in the sampling plots 95% confidence intervals of total population ( $\mu$  value) by Student's t-test ( $p = 0.05$ ) was  $33.09 \pm 4.29\%$  (Table 5). This indicates that Scots pine gap regeneration cores can develop under these conditions with a good growth performance and vitality in Scots pine stands of 110 to 140 years in age. On the other hand, regeneration cores may also occur in the stands with clumped or regular spatial distribution of trees. Indeed, values of CE indicate that spatial distribution of trees within the sample plots are mostly clumped ( $CE < 1.0$ ) for most of the sample plots with the exception of the plot 1, 2, 3 and 5 which showed regular distributions ( $CE > 1.0$ ) (Table 5). Both horizontal and vertical differentiation for stand dimensions (Index TD, TH, TCI, and TCr) was found to be low or moderate. Only sample plot 1 showed clear differentiation for diameter (Table 5). The proportion of land area in gap regeneration cores was between 20% and 66% of total stand area according to the evaluation of Scots pine stands in excess of 110 years in age. The arithmetic mean of gap regeneration area of 95% confidence interval of total population ( $\mu$  value) using Student's t-test ( $p = 0.05$ ) was  $40.68 \pm 11.57\%$  (Table 5).

## **Discussion and Conclusions**

Research on forest dynamics commonly requires measurement of gap sizes (Whitmore et al. 1993), and measurements may be compared across gap size-classes and with closed canopy portions of these systems (Bolton & D'Amato 2011). There have been many definitions and measurement methods for gaps, so this is noted in the review of the literature (Yamamoto 2000). Runkle (1982) was one of the first who summarized the gap terminology and methodical aspects in the context of field measurements. He introduced two different patterns: 'canopy gap' and 'expanded gap', which differ in edge definition of gap area (Huth & Wagner 2006). Currently, several methods are available to define and estimate gap size and no single method seems to have been universally adopted. This is a critical issue because the use of different methods can generate different values

1 while measuring the same phenomenon. For example, gap sizes can vary by up to eight times  
2 depending on the definition used (de Lima 2005). In this context, a definition of gaps containing  
3 trees up to 10 m is considered appropriate for the evaluation of natural regeneration in old-growth  
4 forests with irregular stand structure.

5 In the last two decades, many ecologists working on forest dynamics have focused their attention  
6 on gaps or openings created in the forest canopy (Kuuluvainen 1994; Kubo et al. 1996; Holeksa &  
7 Cybulski 2001; Schlicht & Iwasa 2004; de Lima 2005; Gálhidy et al. 2006; Huth & Wagner 2006;  
8 Kathke & Bruelheide 2010; Bolton & D'Amato 2011). Although numerous studies on gap  
9 dynamics of natural forests have been conducted, applications of gap dynamics to forest practice  
10 are limited. However, accumulated knowledge on gap dynamics is useful for sustainable forest  
11 ecosystem management (Yamamoto 2000). Nevertheless, little attention has been paid to gaps as an  
12 important element of forest structure (Holeksa & Cybulski 2001). Breaks in the canopy have an  
13 important influence on the regeneration of different species of trees. The variation may be  
14 responsible for initiating and sustaining diversity within the ecosystem by providing a variety of  
15 different local micro-environments for regeneration of trees (Schlicht & Iwasa 2004). There is an  
16 abundant literature on population structure and factors affecting natural regeneration in Scots pine  
17 in Europe (González-Martínez & Bravo 2001; Valkonen et al. 2002; Montes et al. 2007) and in  
18 Turkey (Pamay 1962). However, the characteristics of naturally-occurring Scots pine saplings  
19 under the different gap sizes are only poorly studied. Yet estimates of gap sizes are becoming  
20 increasingly important in forest management. The demand for natural landscapes, the multi-  
21 resource use of forests, and the high cost of plantations all help to focus European foresters'  
22 attention on natural regeneration (González-Martínez & Bravo 2001). In this context, the  
23 determination of gap size classes in Scots pine stands within the regeneration core (Small,  
24 intermediate and large), the regeneration cores of natural Scots pine saplings (Figure 3), and  
25 sapling growth-rates in the gaps (Table 2), have been reported by Çoban et al. (2016), Pamay  
26 (1962), Genç (2004) and Odabaşı et al. (2004).

The size of gaps and the processes of gap formation and canopy recovery have been studied intensively, and extensive data are now available from different field sites (Schlicht & Iwasa 2004). Mean gap size (extending to the bases of trees surrounding the gap) was found to be about 200 m<sup>2</sup> in some old-growth forests of the Eastern United States (Runkle 1982). Huth & Wagner (2006) reported that most of the gaps were between 50 and 100 m<sup>2</sup>, although study areas and environmental factors differ greatly. It has been reported that the mean gap size is 30 to 140 m<sup>2</sup> for temperate forests (Yamamoto 2000). In Japan, Yamamoto (1996) indicated that mean gap size was 77.1 m<sup>2</sup> in warm-temperate forests, 92.0 m<sup>2</sup> in cool-temperate forests, and 43.3 m<sup>2</sup> in subalpine forests. In this study, gaps with sapling regeneration cores had a mean size of  $91.55 \pm 23.69$  m<sup>2</sup> (Table 1). Therefore, the results of this research, with the study area at the edge of the Eurasian distribution of Scots pine, were found to be consistent with previous research findings.

Gálhidy et al. (2006), indicated that gap size had a profound effect on the environmental variables measured. While relative light intensity values in small gaps did not reach those in large gaps, soil moisture levels did reach similar maximum values in gap centres regardless of gap size (Gálhidy et al. 2006). In addition, Yu et al. (2014), found no significant difference between the diameters of middle gap and large gap seedlings, but the diameter of middle gap seedlings was higher than that of large gap, suggesting the middle gap would promote the regeneration and high-quality timber cultivation. The current study also showed that most of the gaps size classes were intermediate gaps (90%) while large (5%) and small gaps (5%) were rare. This indicates that Scots pine takes the advantage of relative light intensity values in the gaps. In addition, typical regeneration cores were not developed under small gaps where saplings are mostly sparsely distributed. Saplings under small gaps were mostly degenerated with a low growth potential. However, sapling regeneration was almost absent under closed stands. Gaps create a range of light conditions within and around the gap opening which depend on the sun angle (aspect and topography), tree height, and sky condition. As the size of an opening increases, the amount of light reaching the centre of the gap also increases as a function of both the diameter of the gap and the height of the surrounding stand,

1 i.e., the sky view factor. At night, the sky view factor is related to radiation loss to the sky and the  
2 occurrence of summer frosts (Lieffers et al. 1999).

3 The practical application of this study requires the determination of sapling growth-rates in Scots  
4 pine stands within regeneration cores for the new silvicultural treatments based on gaps. This must  
5 then be linked to observations of field light regimes. The studies have revealed a significant  
6 relationship between gaps and regeneration core of saplings. Decreased canopy cover had a  
7 significant positive effect on sapling growth and this has been found by most studies in the past  
8 (Pamay 1962; Valkonen et al. 2002; Genç 2004; Odabaşı et al. 2004; Çoban et al. 2016). In this  
9 study, appropriate gap size classes and sapling growth in relation to the position within the  
10 regeneration cores were determined (Tables 1 and 2). Similar responses were found by Pukkala et  
11 al. (1993) with the correlation between the radiation parameters and Scots pine sapling growth  
12 significantly positive. As stated by Tegelmark (1998), regeneration core of naturally-occurring  
13 Scots pine saplings is potentially important in future stand development and sapling properties  
14 change with the evolving stages of the stand. Like Çoban et al. (2016), this study also found, that  
15 compared with saplings in the middle of regeneration cores (crop saplings), those at the edge were  
16 always reduced in terms of mean height. In this respect, other key factors except light were  
17 intraspecific competition (Kuuluvainen & Juntunen 1998; González-Martínez & Bravo 2001),  
18 sapling position in the regeneration cores (Pamay 1962), and root competition with mature trees  
19 (Valkonen 2000; Siipilehto 2006; Montes & Cañellas 2007). Examination of the positions of  
20 previously removed trees indicated that root system shape and extent resulted from past  
21 competition prior to regeneration works (Valkonen 2000).

22 Research on shade tolerance suggests that there are species-specific physiological and growth  
23 adaptations which influence the ability to survive and grow at different levels of light. For example,  
24 in low light, shade-tolerant *Abies* species exhibit reduced height and diameter growth without  
25 mortality, but this is not true for pine species (Kobe & Coates 1997; Mason et al. 2004). Scots pine  
26 is a typical shade-intolerant pioneer (Coates & Burton 1999; de Chantal et al. 2003; Ewald 2007;  
27 Kowalska et al. 2016) for which regeneration is practically restricted to open, non-forest

vegetation. Its behaviour in native pinewoods in Scotland certainly reflects this (Ewald 2007). While the broad classification of species as ‘shade tolerant’, ‘intermediate’, or ‘light demanding’ appear to be consistent between regions (Mason et al. 2004). However, the behaviour is not totally fixed and shade tolerance within species may be affected by site quality (Carter & Klinka 1992). Consequently, the magnitude of the competition effect may vary between geographical areas along with differences in site productivity. However, there is little published research available to evaluate or quantify this hypothesis (Valkonen 2000). Sapling establishment and development continues out of the dense groups of the younger cohort, under the protection of the low density groups of remaining mother trees. This semi-shade tolerant behaviour found in the southern distribution of Scots pine, i.e. the Sistema Central range, the Iberian Mountain Range, and other enclaves in Spain, is quite different from the poor shade tolerance shown by the species in the rest of its distributional area (Montes & Cañellas 2007). Although Scots pine is generally considered a shade intolerant species (de Chantal et al. 2003), with increasing site quality it can survive for long periods under a dense forest canopy (Odabaşı et al. 2004; Çoban et al. 2016). Species-specific growth responses show little difference under high available light conditions, but performance at low light levels is generally consistent with shade tolerance rankings in the literature. The exception was that Scots pine shade intolerance was higher than expected (Claveau et al. 2002). Some previous studies suggest that Scots pine saplings cannot survive long under a dense forest canopy (Ata 1995; Genç 2004). However, the results of stem sapling analyses and inspection of the age-height graph showed that naturally-occurring saplings of Scots pine in the gaps have intermediate shade-tolerant characteristics (Figure 5; Table 2). Scots pine saplings as a shade-intolerant species act as intermediate shade-tolerant saplings in the gaps, that are able to thrive in the intermediate shade and do not require full sunlight (Figure 3 and 5; Table 2). It seems that for the time-periods considered, naturally-occurring Scots pine saplings in the gaps are intermediate-tolerant even though they are suppressed. Pamay (1962) described this situation as the “semi-shade type” of Scots pine. This is important since a more detailed understanding of species response to different light levels can help the development of appropriate silvicultural prescriptions to promote

varied forest structures with improved species diversity. Linked to other decision-making tools this can inform the potential impacts of different stand management regimes (Mason et al. 2004).

Recent studies of shade tolerance have examined the relationships between mortality and growth in varying light conditions (Kobe et al. 1995; Kobe & Coates 1997; Wyckoff & Clark 2002; Kunstler et al. 2005; L f et al. 2007). Furthermore, Ata (1995), suggested that older suppressed saplings must be accepted as degenerated individuals that are located under a dense forest canopy and lost their vigour. However,  oban et al. (2016) indicated that these older saplings retain their growth potential during suppression and can recover when the opportunity arises. Vaat & Vildo (2005) concluded that for Scots pine such management intervention with thinning and opening up the canopy needed to be within the first six years and stand densities should be radically reduced (recommended to be to the minimum values allowed by forest legislation or guidance). Additionally, high-density stands will be unsuitable for shelterwood cutting due to shorter crowns and a higher risk of windfall after repeated over-storey removals. This research found a good sapling survival in the gaps under the semi-shade conditions (Figure 5). It is suggested that key elements to the interpretation of this situation are the local differences and distinctiveness of landscapes, together with variations in forest product extraction and management. The application of similar management regimes for all forest zones regardless of stand properties is not sustainable.

As a conclusion, this study supports the point of view that one of the most important rules of close-to-nature silviculture is in the protection and generation of irregular stand structures (multi-layer stand, uneven-aged stands etc.). However, is such a scenario possible? It can be speculated that ageing of the stands and their further thinning will accelerate gap formation. Once old stands start to decrease in density, then more and more trees are likely to be exposed to wind gusts and deposits of snow and rime. At the same time the development of a new generation will probably lag behind enlargement of open areas (Holeksa & Cybulski 2001). According to the findings of this study, the stands of parent Scots pine and older saplings in gap regeneration cores may occur together. In this manner, a model based on gap-regenerating forests can be established as an alternative to a

shelterwood system. Although many studies have been conducted on gap dynamics of natural forests, the application of gap dynamics to forest practice is limited (Yamamoto 2000). However, as many studies suggested, accumulated knowledge on gap dynamics should be useful for sustainable forest ecosystem management.

## Acknowledgements

This study was supported by Scientific Research Fund of Istanbul University, No. 12517.

## References

- Aguirre, O., Hui, G., Gadow, K.v. & Jiménez, J. 2003. An analysis of spatial forest structure using neighbourhood-based variables. *Forest Ecology and Management* 183: 137-145.
- Akalp, T. 1976. Türkiye’de Doğu Ladini Ormanlarında (*Picea orientalis* L. Carr.) Hasılat Araştırmaları [Yield Researches on Oriental Beech Forests (*Picea orientalis* L. Carr.) of Turkey]. *Journal of the Faculty of Forestry Istanbul University (JFFIU)* 26 (1): 9-53 (In Turkish). Turkish.
- Aksoy, H. 1978. Karabük-Büyükdüz Araştırma Ormanı’ndaki orman toplumları ve bunların silvikültürel özellikleri üzerine araştırmalar [Forest communities and their silvicultural characteristics of Karabük-Büyükdüz Research Forests]. Publications of Istanbul University, Faculty of Forestry, Istanbul. [in Turkish].
- Andrzejczyk, T. 2007. Response of Scots pine (*Pinus sylvestris* L.) young-growth stands to an overstorey canopy in the postoutbreak stands in Pila Forests. *Sylvan* 1: 20-29.
- Asan, U. 1984. Study on the yield and management basis of the Kazdagi fir (*Abies equi-trojani* Aschers. Et Sinten.) Forests. Istanbul University, Istanbul (In Turkish).
- Ata, C. 1995. Silvikültür Tekniği [Practice of Silviculture]. ZKÜ Bartın Orman Fakültesi Yayınları, Bartın (In Turkish).
- Atıcı, E. 1998. Değişik Yaşlı Doğu Kayını (*Fagus orientalis* Lipsky) Ormanlarında Artım ve Büyüme [Growth and increment in uneven-aged Oriental Beech (*Fagus orientalis* Lipsky) Forests], Doctorate Thesis, Istanbul University.
- Atıcı, E. 2003. Tek ağaç artım ve büyüme verilerinin bilgisayar destekli istatistik analizi (Govan) [Computer supported statistical analysis (Govan) of the increment and growth data of individual trees]. *Journal of the Faculty of Forestry Istanbul University/ İstanbul Üniversitesi Orman Fakültesi Dergisi* 53: 37-56 (In Turkish).
- Atıcı, E., Colak, A. & Rotherham, I. 2008. Coarse dead wood volume of managed oriental beech (*Fagus orientalis* Lipsky) stands in Turkey. *Forest Systems* 17: 216-227.
- Beckage, B., Lavine, M. & Clark, J.S. 2005. Survival of tree seedlings across space and time: estimates from long-term count data. *Journal of Ecology* 93: 1177-1184.
- Bolton, N.W. & D’Amato, A.W. 2011. Regeneration responses to gap size and coarse woody debris within natural disturbance-based silvicultural systems in northeastern Minnesota, USA. *Forest Ecology and Management* 262: 1215-1222.
- Boydak, M. 1977. Eskişehir-Çatacak mıntıkası ormanlarında Sarıçam’ın (*Pinus sylvestris* L.) tohum verimi üzerine araştırmalar [Researches on seed production in Scots pine forests (*Pinus sylvestris* L.) of Eskişehir-Çatacak Region]. Istanbul Üniversitesi, Istanbul (In Turkish).
- Cameron, A. & Ives, J. 1997. Use of hemispherical photography techniques to determine the association between canopy openness and regeneration of Scots pine (*Pinus sylvestris* L.) and downy birch (*Betula pubescens* Ehrh.) in Ballochbuie native pinewood, North-east Scotland. *Scottish Forestry* 51: 144-149.

- 1 Carter, R. & Klinka, K. 1992. Variation in shade tolerance of Douglas fir, western hemlock, and  
2 western red cedar in coastal British Columbia. *Forest Ecology and Management* 55: 87-  
3 105.
- 4 Castro, J., Zamora, R., Hódar, J.A. & Gómez, J.M. 2004. Seedling establishment of a boreal tree  
5 species (*Pinus sylvestris*) at its southernmost distribution limit: consequences of being in a  
6 marginal Mediterranean habitat. *Journal of Ecology* 92: 266-277.
- 7 Clark, P.J. & Evans, F.C. 1954. Distance to nearest neighbor as a measure of spatial relationships in  
8 populations. *Ecology* 35: 445-453.
- 9 Claveau, Y., Messier, C., Comeau, P.G. & Coates, K.D. 2002. Growth and crown morphological  
10 responses of boreal conifer seedlings and saplings with contrasting shade tolerance to a  
11 gradient of light and height. *Canadian Journal of Forest Research* 32: 458-468.
- 12 Coates, K.D. & Burton, P.J. 1999. Growth of planted tree seedlings in response to ambient light  
13 levels in northwestern interior cedar-hemlock forests of British Columbia. *Canadian*  
14 *Journal of Forest Research* 29: 1374-1382.
- 15 Çatal, Y. 2009. *Batı akdeniz bölgesi kızılçam (Pinus brutia Ten.) meşcerelerinde artım ve büyüme*  
16 *[Increment and growth in West Mediterranean Turkish red pine (Pinus brutia Ten.) stands]*,  
17 Doctorate thesis, SDÜ Fen Bilimleri Enstitüsü.
- 18 Çoban, S., Çolak, A. & Rotherham, I. 2016. Interactions between canopy cover density and  
19 regeneration cores of older saplings in Scots pine (*Pinus sylvestris* L.) stands. *Forest*  
20 *Systems* 25: e073.
- 21 Çolak, A., Rotherham, I. & Calikoglu, M. 2003. Combining 'naturalness concepts' with close-to-  
22 nature silviculture. *Forstwissenschaftliches Centralblatt* 122: 421-431.
- 23 de Chantal, M., Leinonen, K., Kuuluvainen, T. & Cescatti, A. 2003. Early response of *Pinus sylvestris*  
24 and *Picea abies* seedlings to an experimental canopy gap in a boreal spruce forest. *Forest*  
25 *Ecology and Management* 176: 321-336.
- 26 de Lima, R.A.F. 2005. Gap size measurement: the proposal of a new field method. *Forest Ecology*  
27 *and Management* 214: 413-419.
- 28 Erkan, N. 1996. *Kızılçamda (Pinus brutia Ten.) Meşcere Gelişmesinin Simülasyonu [Simulation of*  
29 *stand development of Turkish red pine (Pinus brutia Ten.)]*. OGM Güneydoğu Anadolu  
30 Ormancılık Araştırma Müdürlüğü, Elazığ (In Turkish).
- 31 Ewald, J. 2007. Ein pflanzensoziologisches Modell der Schattentoleranz von Baumarten in den  
32 Bayerischen Alpen. *Forum geobotanicum* 3: 11-19.
- 33 Gálhidy, L., Mihók, B., Hagýó, A., Rajkai, K. & Standovár, T. 2006. Effects of gap size and associated  
34 changes in light and soil moisture on the understorey vegetation of a Hungarian beech  
35 forest. *Plant Ecology* 183: 133-145.
- 36 Genç, M. 2004. *Silvikültürün temel esasları [Basics of Silvics]*. Süleyman Demirel Üniversitesi,  
37 Isparta (In Turkish).
- 38 González-Martínez, S.C. & Bravo, F. 2001. Density and population structure of the natural  
39 regeneration of Scots pine (*Pinus sylvestris* L.) in the High Ebro Basin (Northern Spain).  
40 *Annals of Forest Science* 58: 277-288.
- 41 Holeksa, J. & Cybulski, M. 2001. Canopy gaps in a Carpathian subalpine spruce forest.  
42 *Forstwissenschaftliches Centralblatt* 120: 331-348.
- 43 Huth, F. & Wagner, S. 2006. Gap structure and establishment of Silver birch regeneration (*Betula*  
44 *pendula* Roth.) in Norway spruce stands (*Picea abies* L. Karst.). *Forest Ecology and*  
45 *Management* 229: 314-324.
- 46 Jennings, S., Brown, N. & Sheil, D. 1999. Assessing forest canopies and understorey illumination:  
47 canopy closure, canopy cover and other measures. *Forestry* 72: 59-74.
- 48 Kalıpsız, A. 1981. *İstatistik yöntemler [Statistical Methods]*. İstanbul University, İstanbul (In  
49 Turkish).
- 50 Kalıpsız, A. 1998. *Orman Hasılat Bilgisi [Forest yield knowledge]*. İstanbul Üniversitesi Orman  
51 Fakültesi Yayınları no: 4060-448, İstanbul.

- 1 Kathke, S. & Bruelheide, H. 2010. Gap dynamics in a near-natural spruce forest at Mt. Brocken,  
2 Germany. *Forest Ecology and Management* 259: 624-632.
- 3 Kint, V. 2004. SIAFOR 1.0—user guide. *Laboratory of Forestry, Ghent University*.
- 4 Kobe, R.K. & Coates, K.D. 1997. Models of sapling mortality as a function of growth to characterize  
5 interspecific variation in shade tolerance of eight tree species of northwestern British  
6 Columbia. *Canadian Journal of Forest Research* 27: 227-236.
- 7 Kobe, R.K., Pacala, S.W., Silander, J.A. & Canham, C.D. 1995. Juvenile tree survivorship as a  
8 component of shade tolerance. *Ecological applications* 5: 517-532.
- 9 Kowalska, A., Boczoń, A., Hildebrand, R. & Polkowska, Ż. 2016. Spatial variability of throughfall in a  
10 stand of Scots pine (*Pinus sylvestris* L.) with deciduous admixture as influenced by canopy  
11 cover and stem distance. *Journal of Hydrology* 538: 231-242.
- 12 Kubo, T., Iwasa, Y. & Furumoto, N. 1996. Forest spatial dynamics with gap expansion: total gap  
13 area and gap size distribution. *Journal of theoretical Biology* 180: 229-246.
- 14 Kunstler, G., Curt, T., Bouchaud, M. & Lepart, J. 2005. Growth, mortality, and morphological  
15 response of European beech and downy oak along a light gradient in sub-Mediterranean  
16 forest. *Canadian Journal of Forest Research* 35: 1657-1668.
- 17 Kuuluvainen, T. 1994. Gap disturbance, ground microtopography, and the regeneration dynamics  
18 of boreal coniferous forests in Finland: a review. In: *Annales Zoologici Fennici*, pp. 35-51.  
19 JSTOR.
- 20 Kuuluvainen, T., Hokkanen, T.J., Järvinen, E. & Pukkala, T. 1993. Factors related to seedling growth  
21 in a boreal Scots pine stand: a spatial analysis of a vegetation–soil system. *Canadian*  
22 *Journal of Forest Research* 23: 2101-2109.
- 23 Kuuluvainen, T. & Juntunen, P. 1998. Seedling establishment in relation to microhabitat variation  
24 in a windthrow gap in a boreal *Pinus sylvestris* forest. *Journal of Vegetation Science* 9:  
25 551-562.
- 26 Lieffers, V., Messier, C., Stadt, K., Gendron, F. & Comeau, P. 1999. Predicting and managing light in  
27 the understory of boreal forests. *Canadian Journal of Forest Research* 29: 796-811.
- 28 Löf, M., Karlsson, M., Sonesson, K., Welander, T.N. & Collet, C. 2007. Growth and mortality in  
29 underplanted tree seedlings in response to variations in canopy closure of Norway spruce  
30 stands. *Forestry* 80: 371-383.
- 31 Mason, W.L., Edwards, C. & Hale, S.E. 2004. Survival and early seedling growth of conifers with  
32 different shade tolerance in a Sitka spruce spacing trial and relationship to understorey  
33 light climate. *Silva Fennica* 38: 357-370.
- 34 Montes, F. & Cañellas, I. 2007. The spatial relationship between post-crop remaining trees and the  
35 establishment of saplings in *Pinus sylvestris* stands in Spain. *Applied Vegetation Science*  
36 10: 151-160.
- 37 Montes, F., Pita, P., Rubio, A. & Canellas, I. 2007. Leaf area index estimation in mountain even-  
38 aged *Pinus silvestris* L. stands from hemispherical photographs. *Agricultural and forest*  
39 *meteorology* 145: 215-228.
- 40 Odabaşı, T., Çalışkan, A. & Bozkuş, H. 2004. *Silvikültürün Tekniği (Silvikültür II) [Practice of*  
41 *Silviculture]*. İ. Ü Orman Fakültesi Yayınları, İ. Ü Yayın no: 4459, Orman Fakültesi Yayın no:  
42 475, İstanbul (In Turkish).
- 43 Özcan, B.G. 2003. *Sahilçamı (Pinus pinaster Ait.) ağaçlandırmalarında artım ve büyüme [Increment*  
44 *and growth of Maritime pine plantations]*. Çevre ve Orman Bakanlığı Kavak ve Hızlı  
45 Gelişen Orman Ağaçları Araştırma Enstitüsü (In Turkish).
- 46 Özdemir, E. 2005. *Tek Ağaçta Artım ve Büyümenin Simulasyonu (Sahilçamı Örneği) [Simulation of*  
47 *increment and growth of individual tree (Case of Maritime pine)]*, İstanbul University.
- 48 Özdemir, G.A. & Özdemir, E. 2016. Stem analysis program (GOAP) for evaluating of increment and  
49 growth data at individual tree. *Journal of the Faculty of Forestry Istanbul University/*  
50 *İstanbul Üniversitesi Orman Fakültesi Dergisi* 66: 659-673.
- 51 Özdemir, G.A. & Saraçoğlu, Ö. 2016. *Trakya meşe ormanlarında artım ve büyüme ilişkileri*  
52 *[Increment and growth relations in oak forests of Thrace]*, İstanbul University (In Turkish).

- Pamay, B. 1962. *Türkiye'de sarıçam (Pinus sylvestris L.) Tabii Gençleşmesi imkânları Üzerine Araştırmalar [Researches on natural regeneration possibilities of Scots pine (Pinus sylvestris L.) in Turkey]*. TC Tarım Bakanlığı OGM İstanbul (In Turkish).
- Pommerening, A. 2002. Approaches to quantifying forest structures. *Forestry* 75: 305-324.
- Prodan, M. 1961. *Forstliche Biometrie*. BLV Verlagsgesellschaft.
- Pukkala, T., Kuuluvainen, T. & Stenberg, P. 1993. Below-Canopy distribution of photosynthetically active radiation and its relation to seedling growth in a boreal *Pinus sylvestris* stand: A simulation approach. *Scandinavian Journal of Forest Research* 8: 313-325.
- Runkle, J.R. 1982. Patterns of disturbance in some old-growth mesic forests of eastern North America. *Ecology* 63: 1533-1546.
- Ruuska, J., Siipilehto, J. & Valkonen, S. 2008. Effect of edge stands on the development of young *Pinus sylvestris* stands in southern Finland. *Scandinavian Journal of Forest Research* 23: 214-226.
- Sachs, L. 1970. Statistische Auswertungsmethoden. *Anzeiger für Schädlingskunde* 43: 176-176.
- Schlicht, R. & Iwasa, Y. 2004. Forest gap dynamics and the Ising model. *Journal of theoretical Biology* 230: 65-75.
- Siipilehto, J. 2006. Height distributions of Scots pine sapling stands affected by retained tree and edge stand competition.
- Szmyt, J. 2014. Spatial statistics in ecological analysis: from indices to functions. *Silva Fenn* 48: 1008.
- Şenyurt, M. 2005. *Batı Karadeniz Yöresi sarıçam meşcerelerinde artım ve büyüme [Increment and growth in scots pine forests of West Blacksea Region ]*, Doctorate Thesis, Istanbul University (In Turkish).
- Tegelmark, D. 1998. Site factors as multivariate predictors of the success of natural regeneration in Scots pine forests. *Forest Ecology and Management* 109: 231-239.
- Usta, H.Z. 1990. *Kızılçam (Pinus brutia Ten.) Ağaçlandırmalarında Hasılat Araştırmaları [Yield researches on Turkish red pine forestations (Pinus brutia Ten.)]*. Ormançılık Araştırma Enstitüsü Yayınları, Ankara (In Turkish).
- Vaat, T. & Vildo, M. 2005. Shelterwood cutting in Scots pine (*P. sylvestris* L.) stands. *Transactions of the Faculty of Forestry, Estonian Agricultural University* 38: 53-64.
- Valkonen, S. 2000. Effect of retained Scots pine trees on regeneration, growth, form, and yield of forest stands. *Forest Systems* 9: 121-145.
- Valkonen, S., Ruuska, J. & Siipilehto, J. 2002. Effect of retained trees on the development of young Scots pine stands in Southern Finland. *Forest Ecology and Management* 166: 227-243.
- Whitmore, T., Brown, N., Swaine, M., Kennedy, D., Goodwin-Bailey, C. & Gong, W. 1993. Use of hemispherical photographs in forest ecology: measurement of gap size and radiation totals in a Bornean tropical rain forest. *Journal of tropical ecology* 9: 131-151.
- Wyckoff, P.H. & Clark, J.S. 2002. The relationship between growth and mortality for seven co-occurring tree species in the southern Appalachian Mountains. *Journal of Ecology* 90: 604-615.
- Yamamoto, S.-I. 2000. Forest gap dynamics and tree regeneration. *Journal of Forest Research* 5: 223-229.
- Yamamoto, S. 1996. Gap regeneration of major tree species in different forest types of Japan. *Plant Ecology* 127: 203-213.
- Yu, B., Zhang, W., He, T., You, J. & Li, G. 2014. Effects of forest gap size on the architecture of *Quercus variabilis* seedlings on the south slope of Qinling Mountains, west China. *Ying yong sheng tai xue bao= The journal of applied ecology* 25: 3399-3406.
- Zagidullina, A. & Tikhodeyeva, M. 2006. Spatial patterns of tree regeneration and ground cover in dry Scots pine forest in Russian Karelia. *Ecoscience* 13: 203-218.
- Zhang, Q. & Zak, J.C. 1995. Effects of gap size on litter decomposition and microbial activity in a subtropical forest. *Ecology* 76: 2196-2204.



**Table 1.** Descriptive analysis of the 20 canopy gap areas with sapling regeneration cores obtained using 9 stand projection method of measurement in Scots pine stands. Data and statistical analysis from 20 regeneration cores ( $n = 20$ ,  $v = 19$ ,  $t = 2.093$ ),  $\mu$  (Eq.2). This was confirmed by Student's t-test ( $p = 0.05$ ): Arithmetic mean of 95% confidence interval of total population.

Number of sample plots	Regeneration core in sample plots (Figure 3)	Gap sizes ( $m^2$ )
1	a	86
	b	60
2	a	65
	b	100
	c	60
3	a	15
	b	95
4	a	105
	b	150
5	a	90
	b	130
	c	40
6	a	60
	b	90
	c	65
7	a	90
	b	240
8	a	100
9	a	30
	b	160
$\bar{x}$		91.55
$S^2$		2562.78
$S$		50.623
$SE_{\bar{x}}$		11.319
$n$		20
$\mu$		91.55 $\pm$ 23.69
Frequency distribution of natural sapling under different gap size gradients		
Gap size gradients	Number of gap size gradients	% of gap size gradients
Small	1	5
Intermediate	18	90
Large	1	5

**Table 2.** Frequency distribution of natural sapling under different gap size gradients. The data and statistical analysis from 20 sapling regeneration cores with different gap size gradients. This was confirmed by Kruskal-Wallis H test (Level; 0: Absence of gap size classes within sample plots; 1: Presence of gap size classes within sample plots).

Number of sample plots	Gap size gradients					
	Small		Intermediate		Large	
	Position in sample plots (Figure 3)	Level	Position in sample plots (Figure 3)	Level	Position in sample plots (Figure 3)	Level
1	$S_1$	0	$I_1$	1	$L_1$	0
			$I_2$	1		
2	$S_2$	0	$I_3$	1	$L_2$	0
			$I_4$	1		

				I <sub>5</sub>	1		
3	S <sub>3</sub>	1		I <sub>6</sub>	1	L <sub>3</sub>	0
4	S <sub>4</sub>	0		I <sub>7</sub>	1	L <sub>4</sub>	0
				I <sub>8</sub>	1		
5	S <sub>5</sub>	0		I <sub>9</sub>	1	L <sub>5</sub>	0
				I <sub>10</sub>	1		
				I <sub>11</sub>	1		
6	S <sub>6</sub>	0		I <sub>12</sub>	1	L <sub>6</sub>	0
				I <sub>13</sub>	1		
				I <sub>14</sub>	1	L <sub>7</sub>	1
7	S <sub>7</sub>	0		I <sub>15</sub>	1	L <sub>8</sub>	0
8	S <sub>8</sub>	0		I <sub>16</sub>	1	L <sub>9</sub>	0
9	S <sub>9</sub>	0		I <sub>17</sub>	1		
Frequency distribution							
	Small gaps			Intermediate gaps		Large gaps	
Level	0	1		0	1	0	1
Total	8	1		0	18	8	1
Statistical analysis (Kruskal–Wallis U-Test)	Descriptive Statistics						
	N			Mean		Std. Deviation	
	27			0.741		1.059	
	Test Statistics						
				Ch-Square		20.533	
				df		2	
				Asymp. Sig.		p <0.001	

**Table 3.** The effect of the position of the sapling within the regeneration core on height of saplings in the regeneration core. Data and statistical analysis from nine regeneration cores (n = 9, v = 8, t = 2.306),  $\mu$  (Eq.2). This was confirmed by Student's t-test (p = 0.05): Arithmetic mean of 95% confidence interval of total population.

Number of sample plots	Regeneration core in sample plots (Figure 2)	Height of saplings (m)							
		Edge 1	Main crop	Edge 2					
1	b	1.47	2.82	1.42					
2	b	1.65	2.68	1.68					
3	b	1.18	2.03	1.60					
4	b	1.27	3.00	1.60					
5	b	1.28	3.92	1.23					
6	b	1.78	2.58	4.35					
7	a	2.32	3.20	1.58					
8	a	1.49	2.83	1.78					
9	b	1.75	3.93	1.82					
Descriptive Statistics									
	$\bar{x}$	1.576	2.998	1.895					
	S <sup>2</sup>	0.123	0.379	0.879					
	S	0.351	0.615	0.937					
	SE <sub><math>\bar{x}</math></sub>	0.117	0.205	0.312					
	n	9	9	9					
	$\mu$	1.576±0.269	2.998±0.472	1.895±0.719					
Independent Samples Test									
Levene's Test for Equality of Variances		t-test for Equality of Means							
F	Sig.	t	df	Sig. (2-tailed)	Mean Dif.	Std. Error Dif.	95% Confidence Interval of the Difference		
							Lower	Upper	
Edge 1 and main crop	1.744754	0.205119	-	16	0.00001	-1.422222	0.236288	-	-0.921315
		6.01903						1.923129	

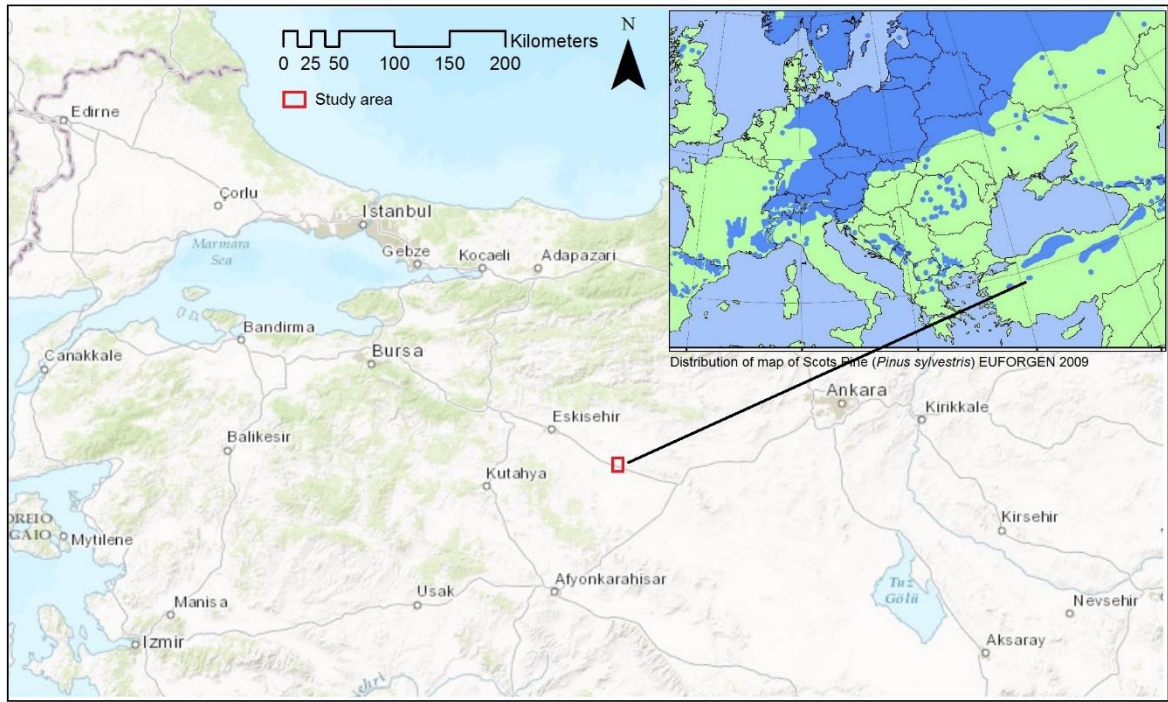
Edge 2 and main crop	0.103206	0.752174	2.95090	16	0.00939	1.103333	0,373897	0.310708	1.895959
----------------------	----------	----------	---------	----	---------	----------	----------	----------	----------

**Table 4.** The effect of the position of the sapling within the regeneration core on age of saplings in the regeneration core. Data and statistical analysis from nine regeneration cores ( $n = 9$ ,  $v = 8$ ,  $t = 2.306$ ),  $\mu$  (Eq.2). This was confirmed by Student's  $t$ -test ( $\alpha = 0.05$ ): Arithmetic mean of 95% confidence interval of total population.

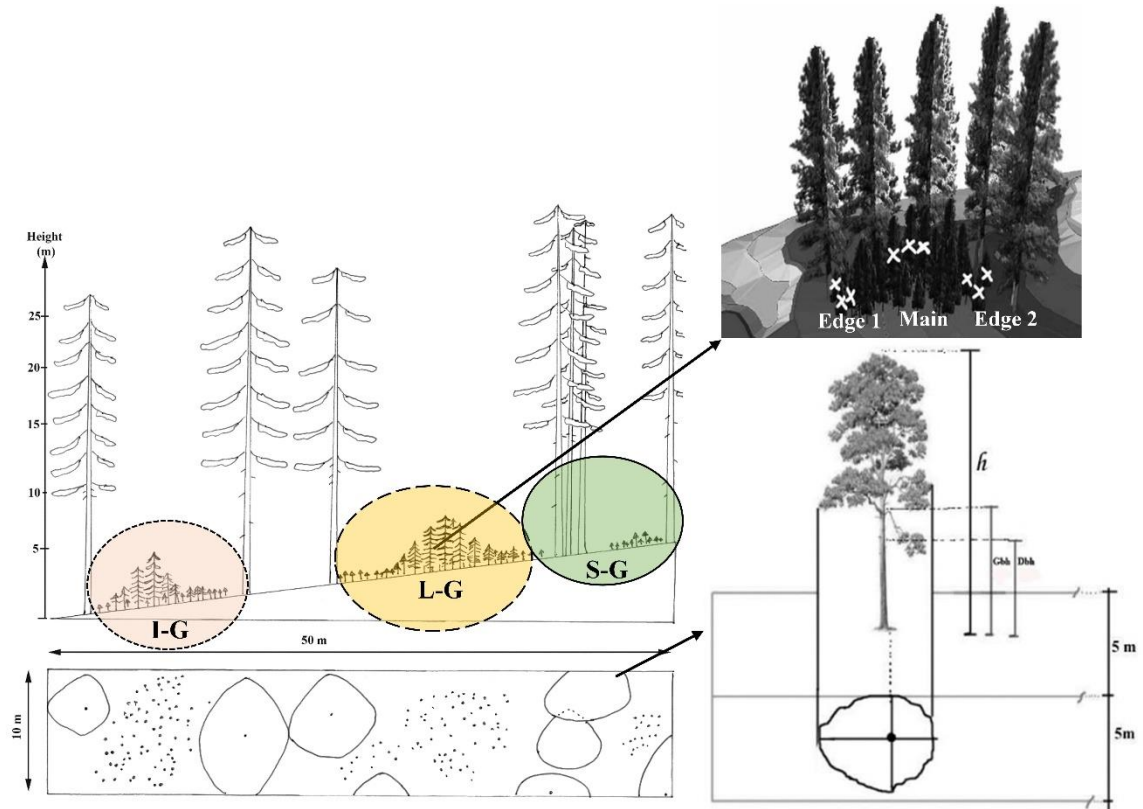
Number of sample plots	Regeneration core in sample plots (Figure 2)	Ages of saplings (year)								
		Edge 1		Main crop			Edge 2			
1	b	12.00		14.67			11.33			
2	b	9.67		13.67			12.00			
3	b	12.00		12.00			10.50			
4	b	9.67		14.33			12.67			
5	b	10.00		15.33			9.33			
6	b	24.00		30.33			33.33			
7	a	14.67		21.00			12.67			
8	a	8.33		11.67			12.00			
9	b	12.00		13.67			10.33			
Descriptive Statistics										
$\bar{x}$		12.48		16.29			13.79			
$S^2$		22.17		35.02			54.93			
S		4.70		5.91			7.41			
$SE_{\bar{x}}$		1.56		1.97			2.47			
n		9		9			9			
$\mu$		12.48±3.59		16.29±4.54			13.79±5.69			
Independent Samples Test										
Levene's Test for Equality of Variances		t-test for Equality of Means								
		F	Sig.	t	df	Sig. (2-tailed)	Mean Dif.	Std. Error Dif.	95% Confidence Interval of the Difference	
									Lower	Upper
Edge 1 and main crop		0.412	0.52	-1.513	16	0.14	-3.81	2.520	-9.15	1.52
Edge 2 and main crop		0.005	0.94	0.79	16	0.44	2.50	3.16	-4.20	9.20

**Table 5.** Description of sample plots with spatial indices. Data and statistical analysis from nine regeneration cores ( $n = 9$ ,  $v = 8$ ,  $t = 2.306$ ),  $\mu$  (Eq.2). This was confirmed by Student's t-test ( $p = 0.05$ ): Arithmetic mean of 95% confidence interval of total population.

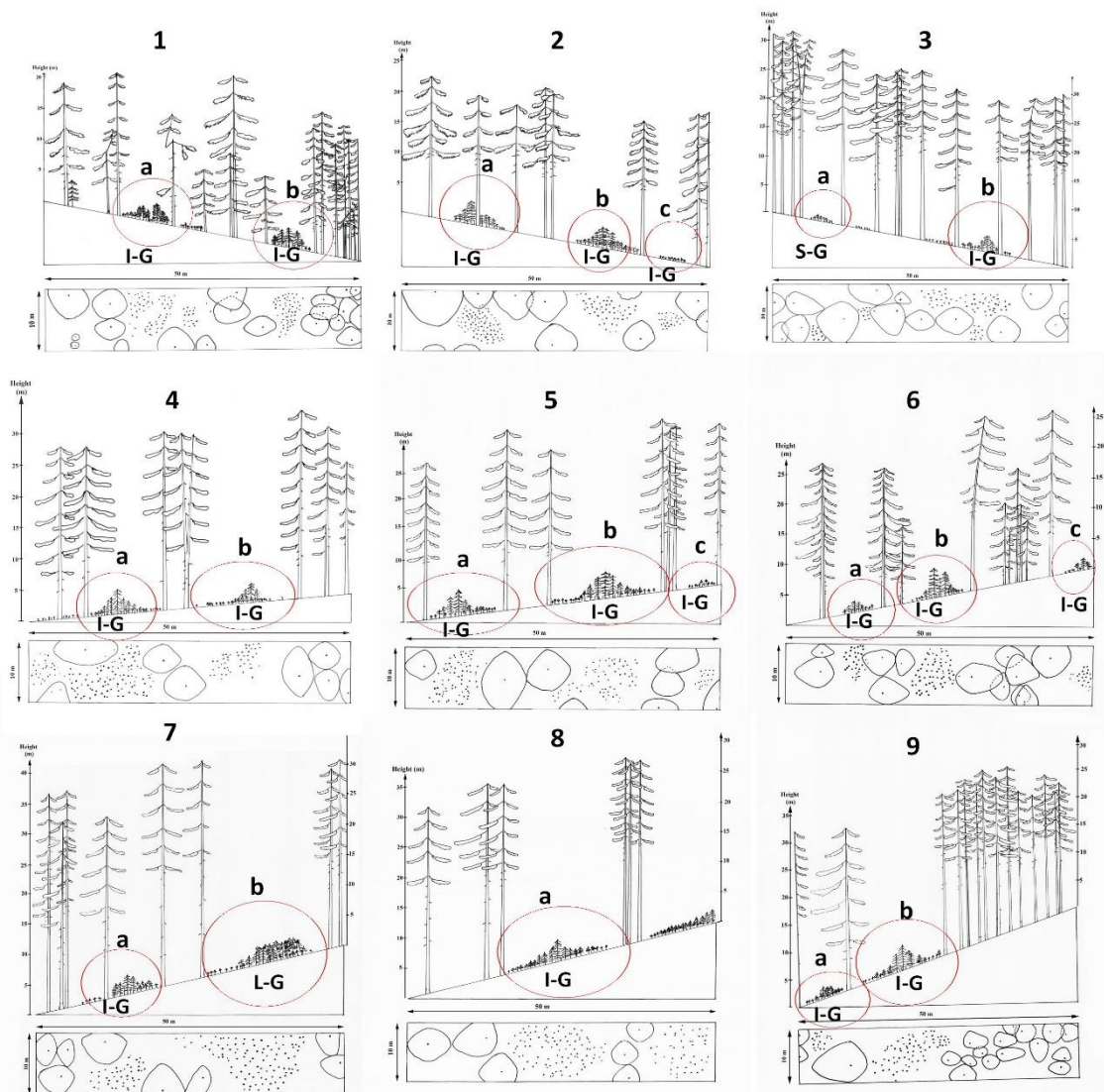
Plots	Altitude (m)	Aspect	Inclination (degree)	Nr of trees	*/ha	Basal area (m <sup>2</sup> )	CE	Index TD	Index TH	Index TCI	Index TCr	Nr of regeneration core	Rate of gap regeneration area (%) per plot	Stand cover (%)
1	1596	NW	11	18	360	25.3	1.12	0.404	0.337	0.389	0.249	2	29.2	36.30
2	1586	N	10	8	160	26.1	1.26	0.137	0.078	0.295	0.248	3	45	34.43
3	1589	NW	11	14	275	39.5	1.16	0.121	0.045	0.187	0.217	2	22	42.60
4	1592	NE	5	8	157	38.7	0.92	0.164	0.101	0.238	0.230	2	51	31.20
5	1607	NE	7	7	137	27.8	1.26	0.217	0.063	0.100	0.241	3	52	31.40
6	1583	NE	11	12	235	25.6	0.78	0.300	0.287	0.335	0.223	3	43	35.40
7	1540	NE	13	8	157	29.7	0.97	0.143	0.104	0.085	0.161	2	66	26.60
8	1517	N	14	6	118	18.1	0.95	0.114	0.024	0.240	0.201	1	20	23.88
9	1530	NW	19	18	353	40.3	0.98	0.147	0.057	0.244	0.235	2	38	36.05
x̄												40.68	33.09	
S <sup>2</sup>												226.92	31.25	
S												15.06	5.59	
SE <sub>x̄</sub>												5.02	1.86	
n												9	9	
μ												40.68± 11.57	33.09± 4.29	



**Figure 1.** Natural distribution range of *Pinus sylvestris* L. (EUFORGEN, 2009) and location of sample plots.



**Figure 2.** The gap size gradient models of Scots pine stands with three gap gradients (Zhang & Zak 1995): Small gaps (S) with a diameter of  $< 5$  m ( $< 20$  m<sup>2</sup>); Intermediate gaps (I) with a diameter of 5 - 15 m (20 - 177 m<sup>2</sup>); Large gaps (L) with a diameter of 15 - 30 m (178 - 707 m<sup>2</sup>) (longitudinal and vertical projection of stands from (Coban 2007, Coban et al. 2016).



**Figure 3.** Longitudinal (profile) and vertical stand projection of 20 sample plots with different gap size gradients within the regeneration cores (S-G: Small gaps; I-G: Intermediate gaps; L-G: Large gaps) in pure Scots pine stands.

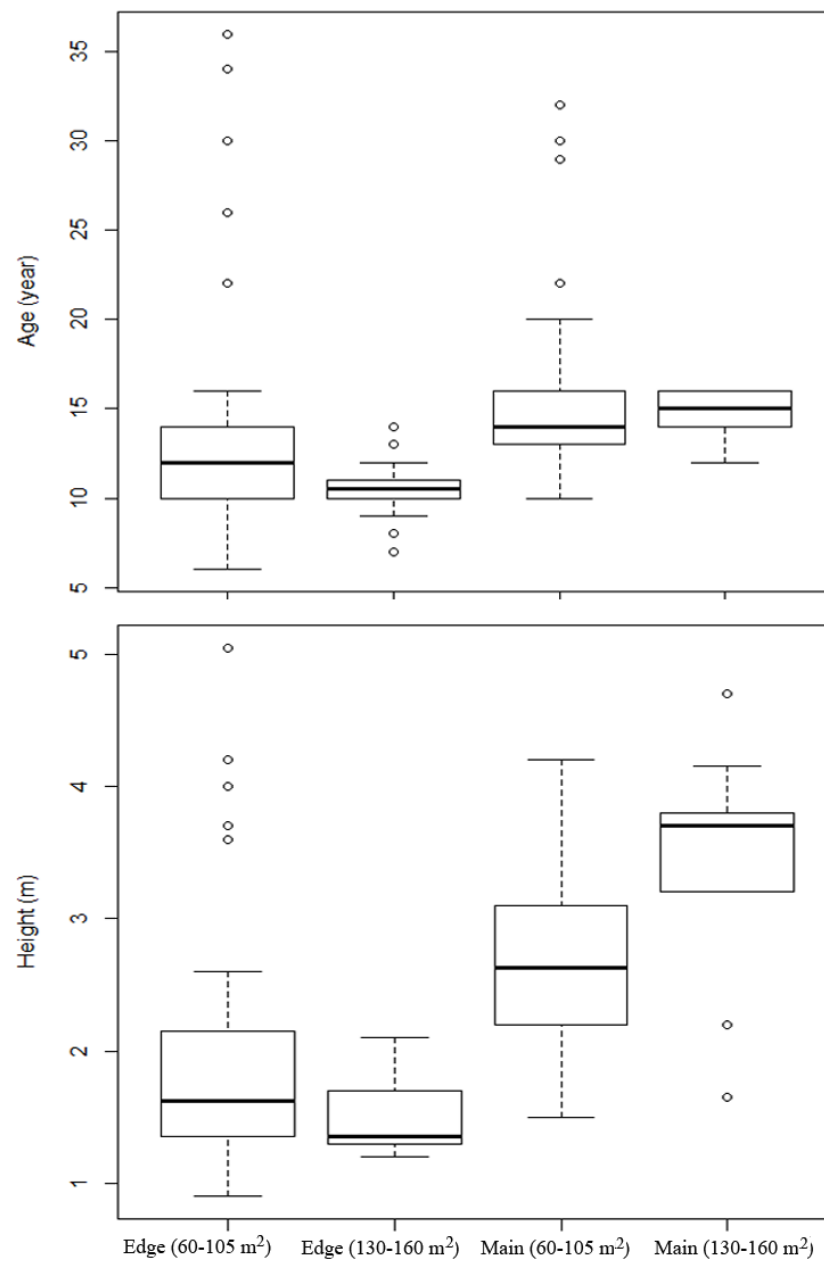
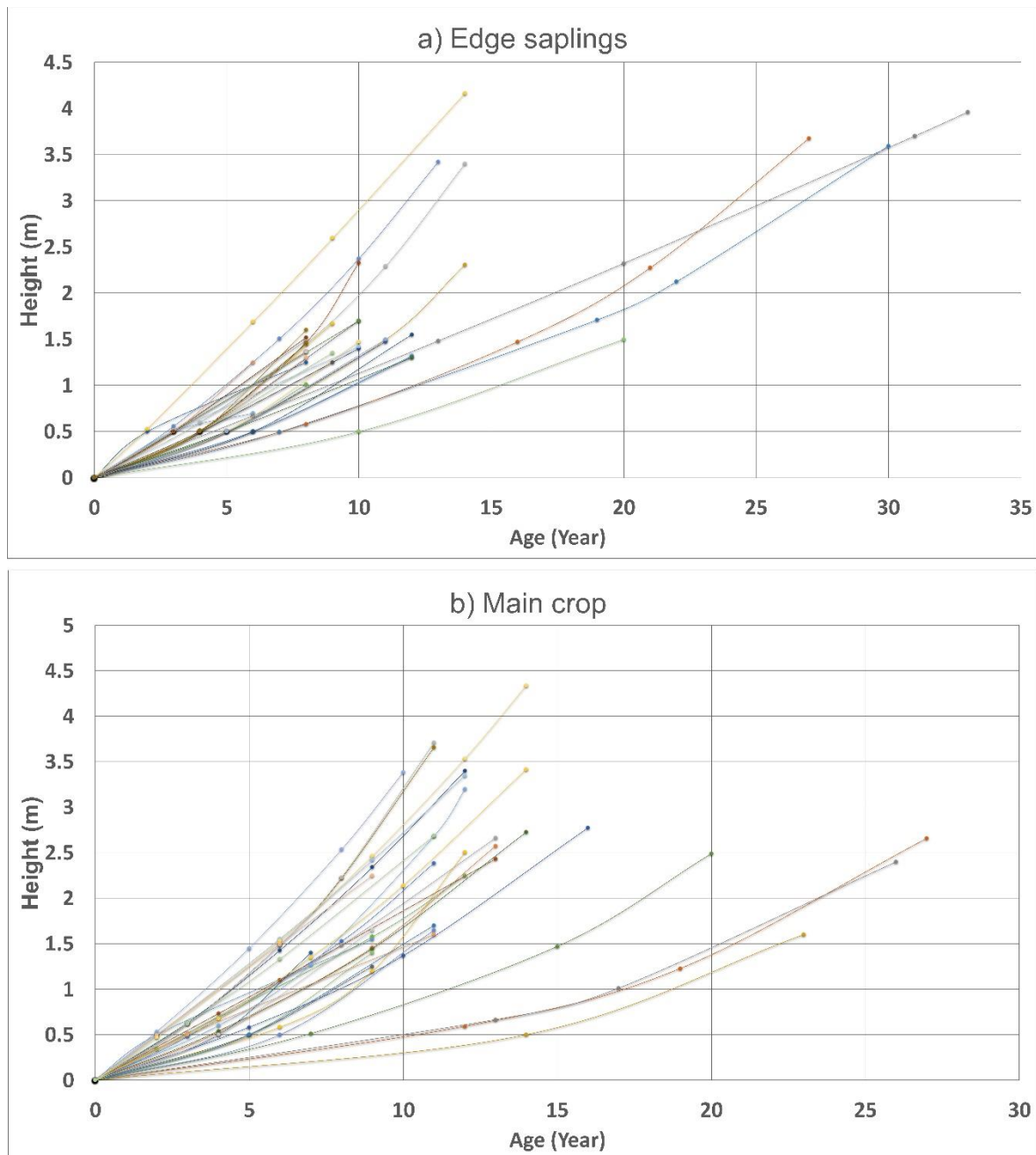


Figure 4. Boxplots of sapling age (above) and height (below) in relation to their position in the regeneration core and sizes of intermediate gaps.



**Figure 5.** Height of saplings within regeneration cores under Intermediate gap size gradient (Stem analyses from 64 Edge saplings and 31 Main crop saplings are shown in the graph).