

**Species, size, and location of “giant trees” in Tokyo’s urban area and western suburbs**

PENG, Xu, TACHIKAWA, Kotaro, NAKAJIMA, Hiroaki, KANAZAWA, Yumiko, SUZUKI, Kojiro, HANDLEY, Christine and ROTHERHAM, Ian  
<<http://orcid.org/0000-0003-2903-5760>>

Available from Sheffield Hallam University Research Archive (SHURA) at:

<https://shura.shu.ac.uk/23130/>

---

This document is the Accepted Version [AM]

**Citation:**

PENG, Xu, TACHIKAWA, Kotaro, NAKAJIMA, Hiroaki, KANAZAWA, Yumiko, SUZUKI, Kojiro, HANDLEY, Christine and ROTHERHAM, Ian (2018). Species, size, and location of “giant trees” in Tokyo’s urban area and western suburbs. *Arboricultural Journal*, 40 (4), 234-254. [Article]

---

**Copyright and re-use policy**

See <http://shura.shu.ac.uk/information.html>

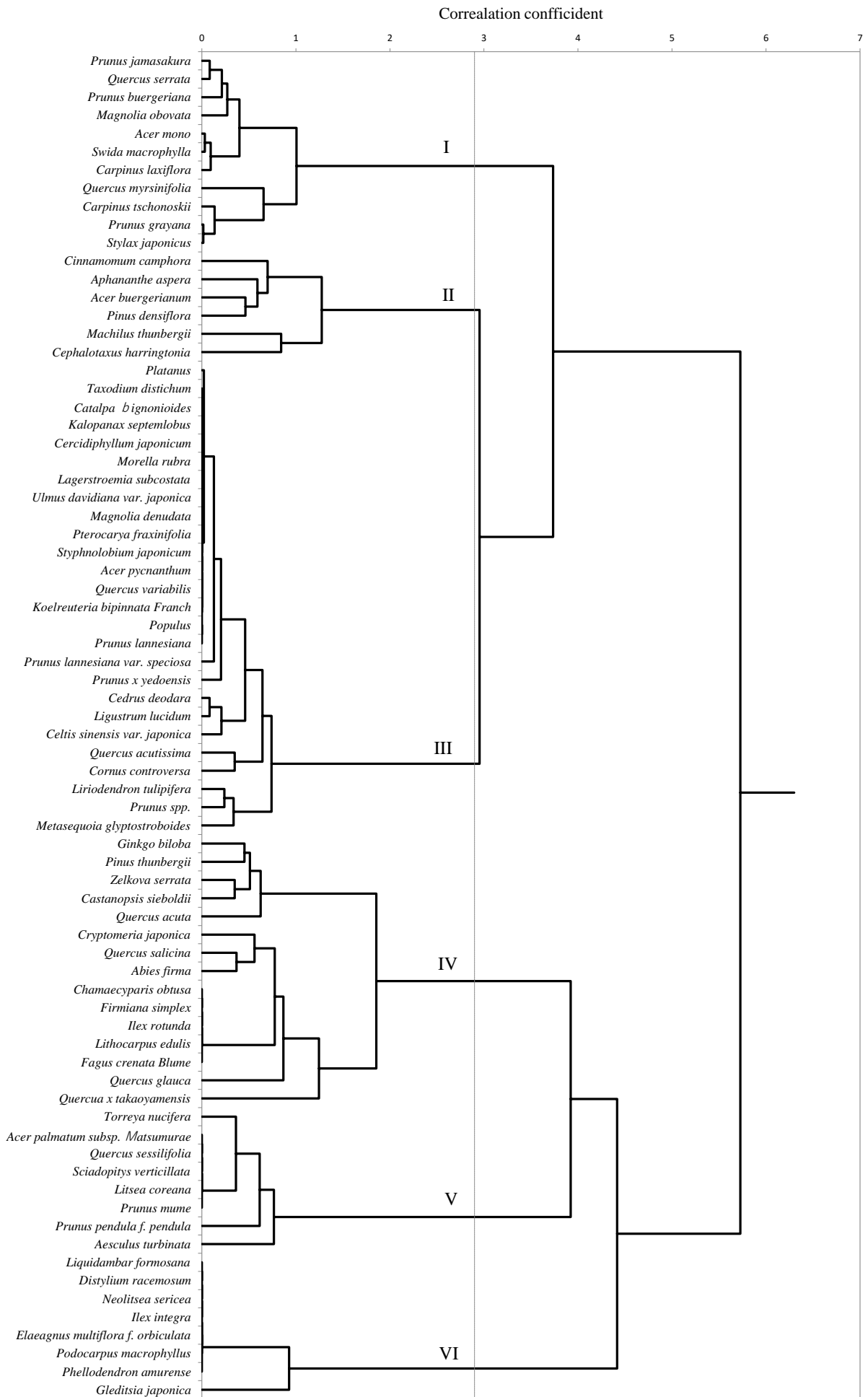


Figure 2