

Multi-domain quantitative recovery following Radical Cystectomy for patients within the iROC (Robot Assisted Radical Cystectomy with intracorporeal urinary diversion versus Open Radical Cystectomy) Randomised Controlled Trial: The first 30 patients

CATTO, James W.F., KHETRAPAL, Prमित, AMBLER, Gareth, SARPONG, Rachel, POTYKA, Ingrid, KHAN, Shamim, TAN, Melanie, FEBER, Andrew, BOURKE, Liam <<http://orcid.org/0000-0002-6548-4603>>, NOON, Aidan P., DIXON, Simon, GOODWIN, Louise, WILLIAMS, Norman R., ROWE, Edward, KOUPARIS, Anthony, MCGRATH, John, BREW-GRAVES, Chris and KELLY, John D.

Available from Sheffield Hallam University Research Archive (SHURA) at:

<http://shura.shu.ac.uk/21932/>

This document is the author deposited version. You are advised to consult the publisher's version if you wish to cite from it.

Published version

CATTO, James W.F., KHETRAPAL, Prमित, AMBLER, Gareth, SARPONG, Rachel, POTYKA, Ingrid, KHAN, Shamim, TAN, Melanie, FEBER, Andrew, BOURKE, Liam, NOON, Aidan P., DIXON, Simon, GOODWIN, Louise, WILLIAMS, Norman R., ROWE, Edward, KOUPARIS, Anthony, MCGRATH, John, BREW-GRAVES, Chris and KELLY, John D. (2018). Multi-domain quantitative recovery following Radical Cystectomy for patients within the iROC (Robot Assisted Radical Cystectomy with intracorporeal urinary diversion versus Open Radical Cystectomy) Randomised Controlled Trial: The first 30 patients. *European Urology*, 74, 531-534.

Copyright and re-use policy

See <http://shura.shu.ac.uk/information.html>

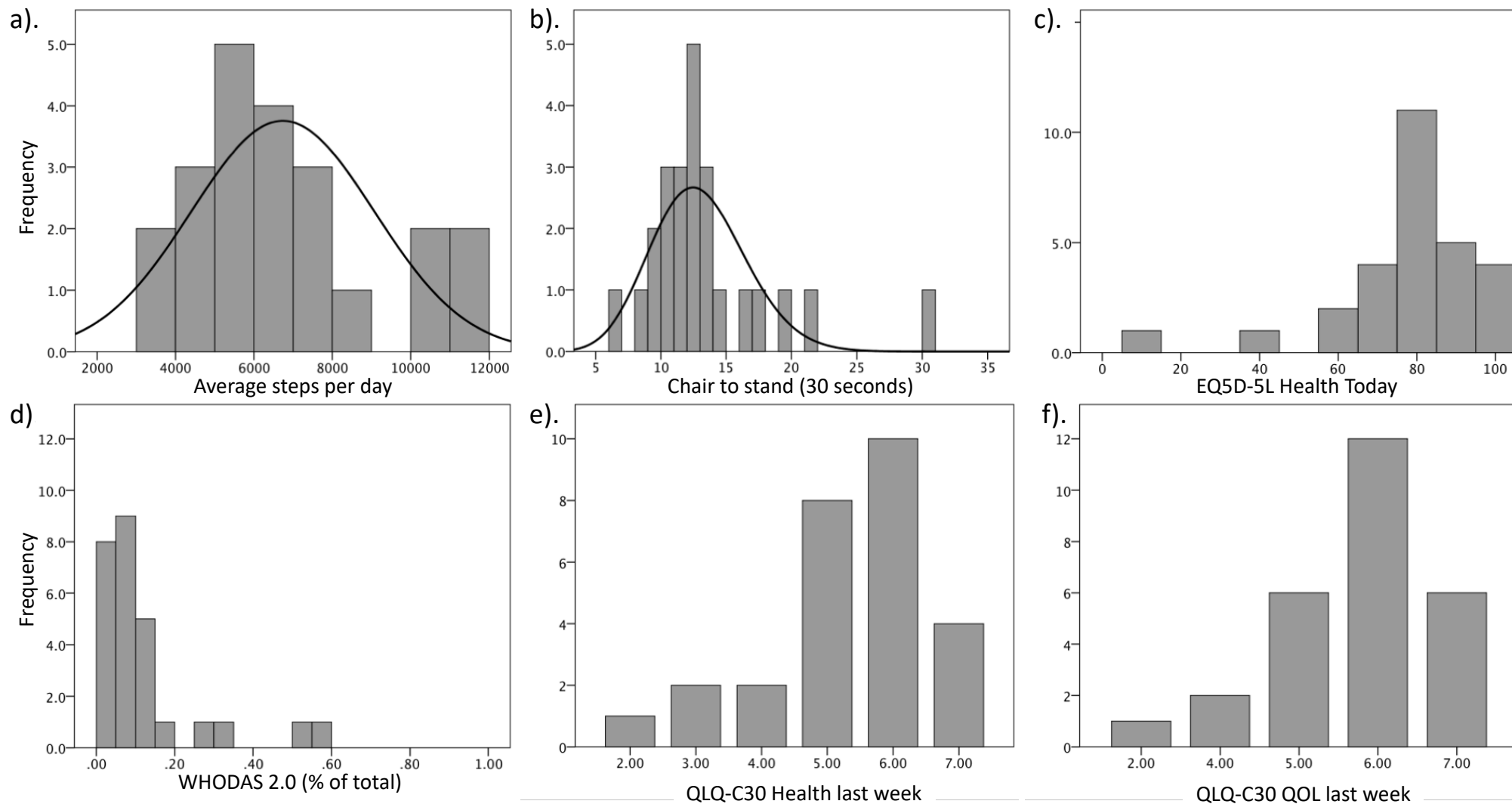


Figure 1. Baseline distribution of multimodal metrics in patients undergoing radical cystectomy.

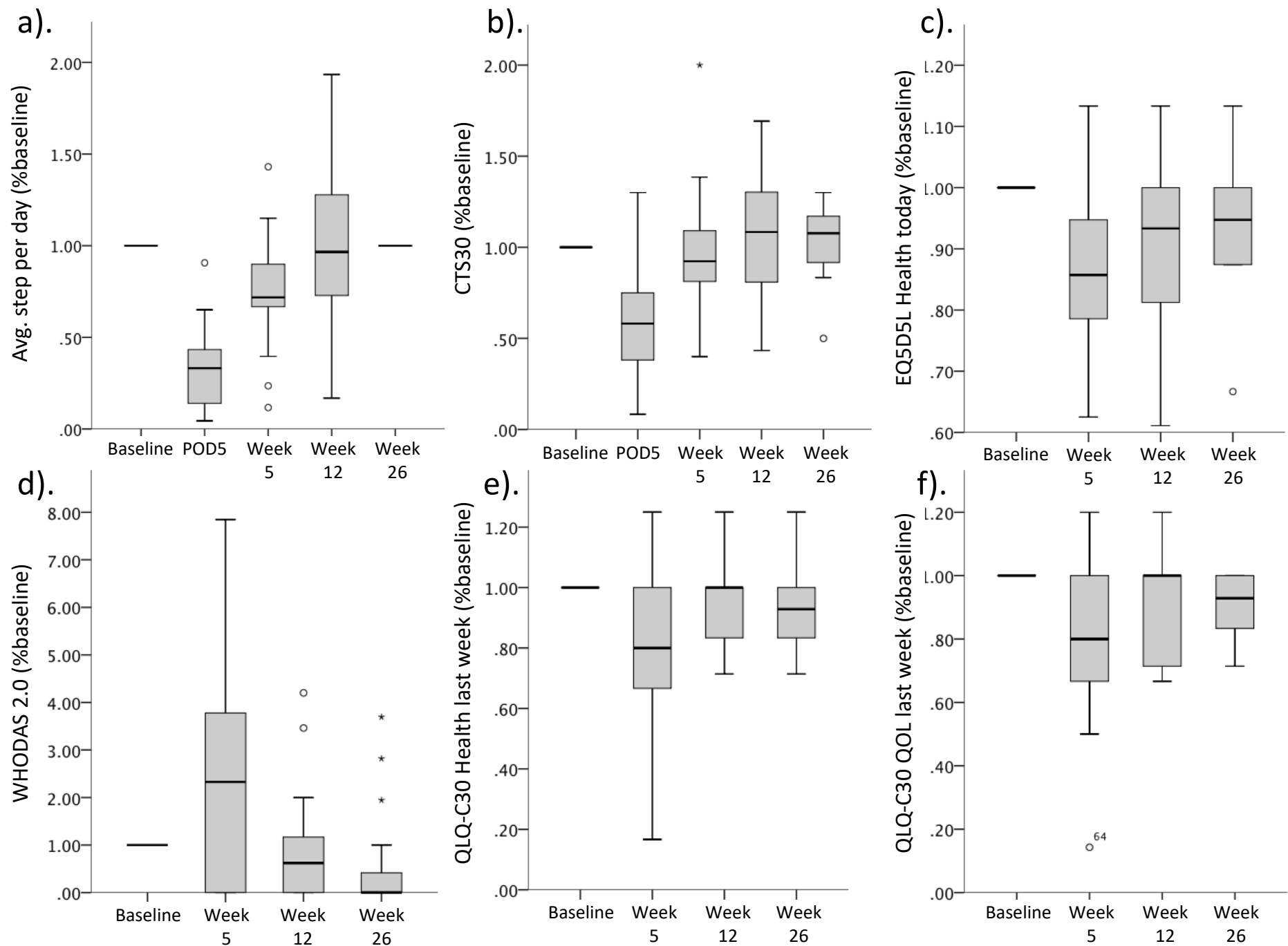
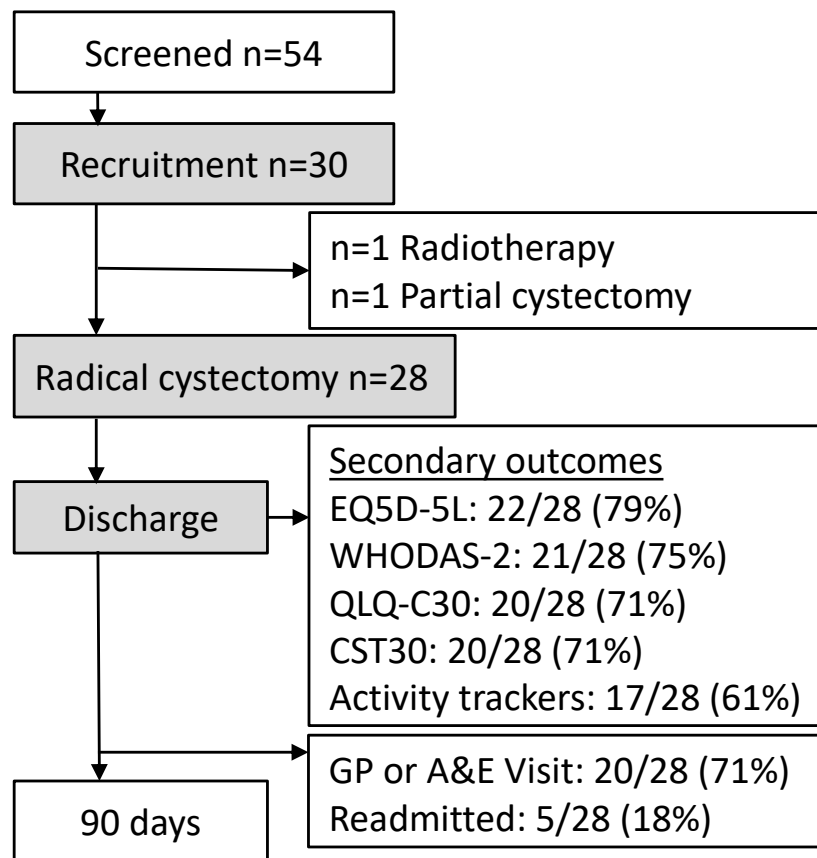
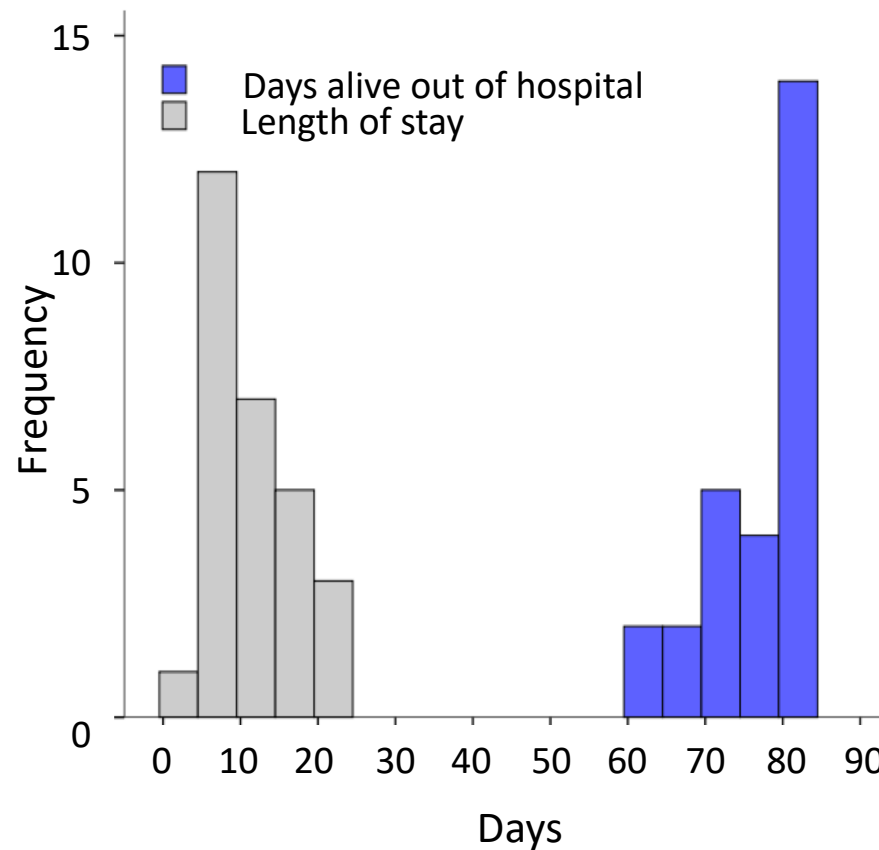


Figure 2. Changes in quantified activity levels, exercise capacity and patient reported disability and QOL during recovery from radical cystectomy.

a). First 30 patients in iROC

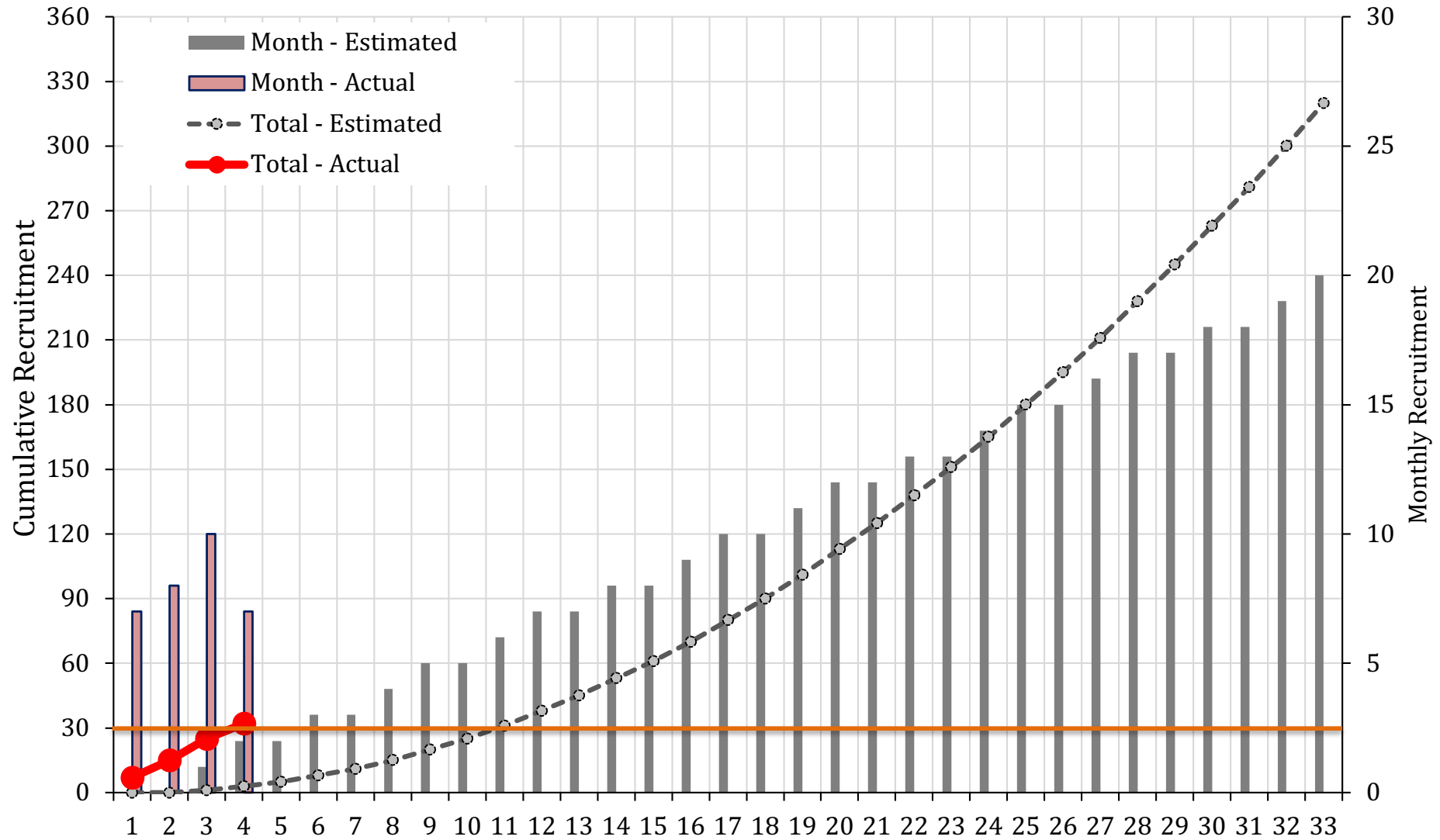


b). Primary outcome for first 30 patients



Supplementary figure 1. a). Recruitment and collection of data within iROC. B). Primary outcome measure (Days alive and out of hospital) and Length of stay within iROC.

iROC Recruitment



Supplementary figure 2. Actual (red) and estimated (grey) recruitment within iROC. The first 30 patient threshold is shown as an orange line.