

Increasing societal awareness of dying, death and bereavement

BEARD, Barbara, SKILBECK, Julie <<http://orcid.org/0000-0002-7753-5279>>, WILSON, Janet, ANDERTON, Leisa <<http://orcid.org/0000-0003-3801-7708>> and MONKS, Suzanne

Available from Sheffield Hallam University Research Archive (SHURA) at:

<https://shura.shu.ac.uk/20970/>

This document is the Accepted Version [AM]

Citation:

BEARD, Barbara, SKILBECK, Julie, WILSON, Janet, ANDERTON, Leisa and MONKS, Suzanne (2017). Increasing societal awareness of dying, death and bereavement. In: Inclusivity in Palliative Care Education: Discerning or Discriminating?, Oulton Hall, Leeds, 4th & 5th December 2017. (Unpublished) [Conference or Workshop Item]

Copyright and re-use policy

See <http://shura.shu.ac.uk/information.html>

Increasing Societal Awareness of Dying, Death and Bereavement

Sheffield
Hallam
University

Barbara Beard, Julie Skilbeck, Janet Wilson,
Leisa Anderton, Suzanne Monks



BACKGROUND

Increasingly health and social care professionals are working with service users in the last year of their lives. 'We cannot defeat death but we can change the way we talk about dying' (National Palliative and end of life partnership, 2015 p9).
To raise awareness during NCPC dying matters awareness week the palliative care interest group at Sheffield Hallam University, in partnership with the local hospice held a Death Cafe

AIM

To encourage staff and students to have conversations about their own and others death, dying and bereavement and reach the wider community with partners from across the city via related events.

METHOD

The death cafe provided a range of activities and discussions with different organisations including : Tree of wishes, FINK cards, Grave talk conversations, Creation of memory boxes, Chaplaincy, Organ donation, Solicitor, Funeral director, Multi faith display, live streaming, twitter feed

I enjoyed the informal conversations and easily accessible relevant materials

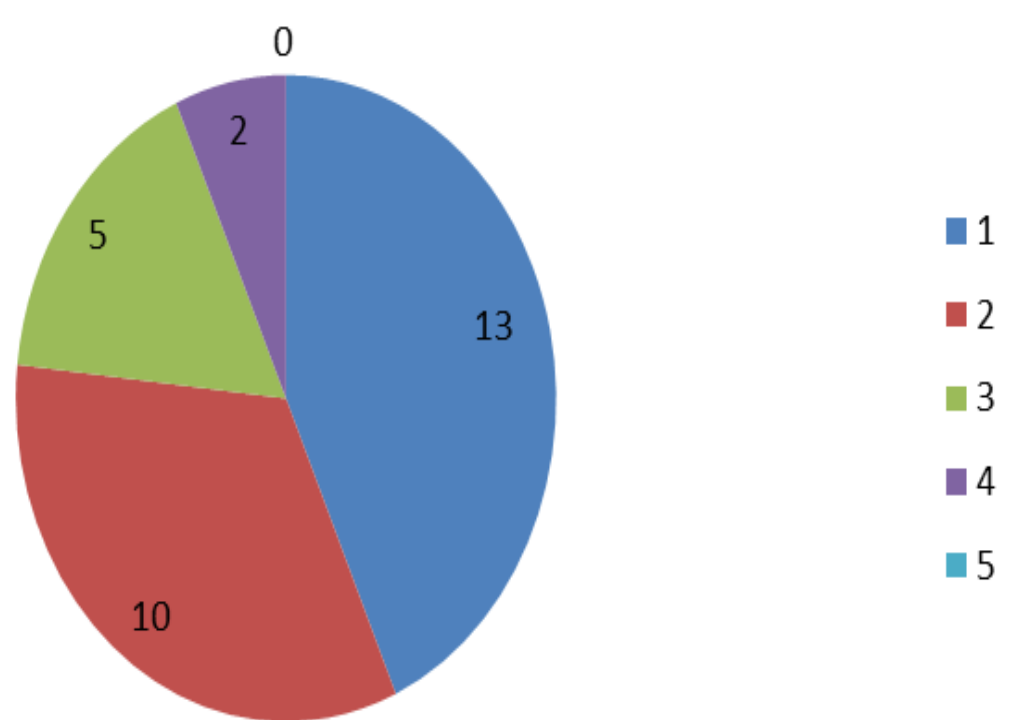


I found the 3 things before you die tree surprisingly difficult, which is really good as it led to a lot of reflection

The information stands were good in breaking down barriers to talking about death

The memory box room staff were extremely helpful, and had a lot of information and knowledge to share

Relevance to personal development



I valued the variety of participants

FINDINGS

89 people registered for the death cafe and were sent a questionnaire. The response rate was 47% with the following results

94% said it was relevant to their learning

79% said it was relevant to their personal development



CONCLUSION

The Death Cafe offered a safe and inclusive forum for staff and students to explore conversations around death, dying and bereavement. Death cafes can compliment current approaches to palliative and end of life care education, further promoting the public health approach to this topic